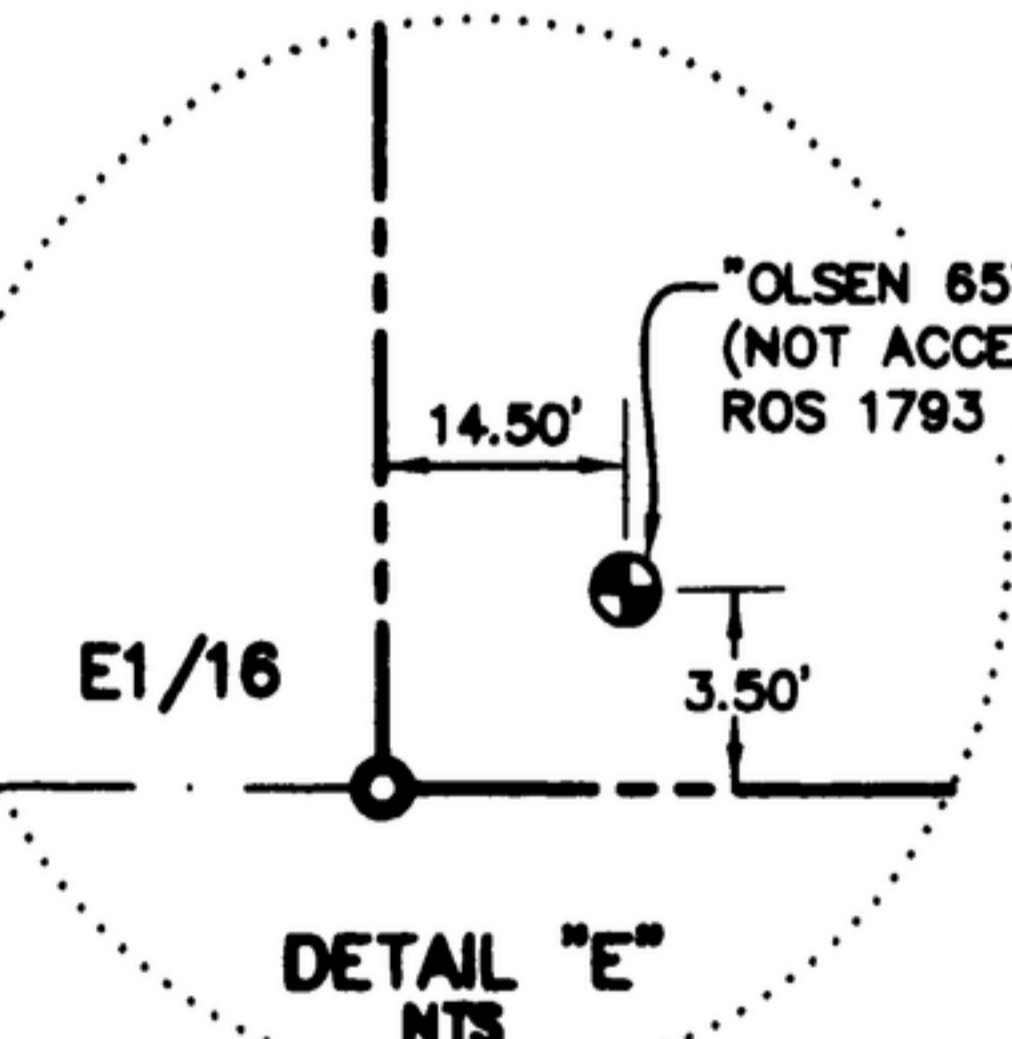
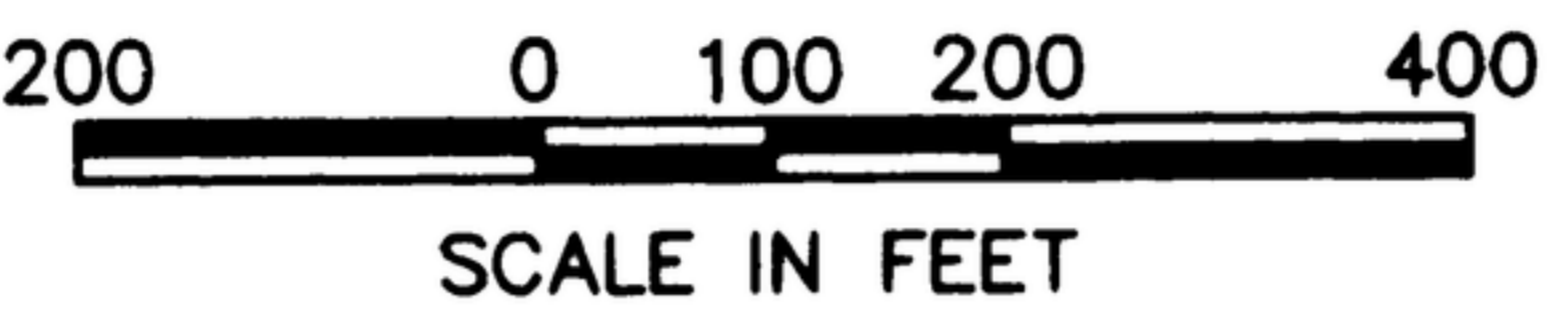
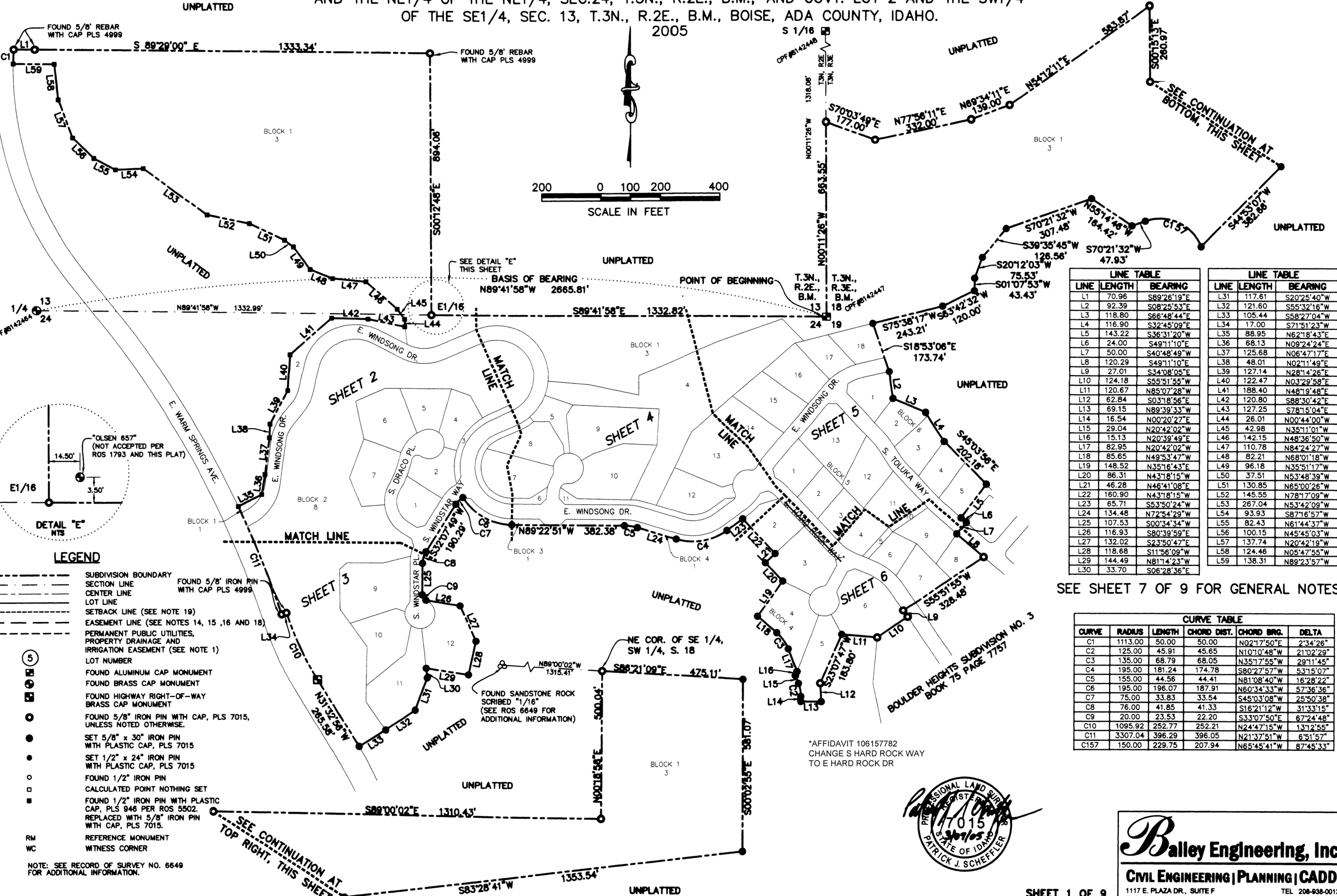


# PLAT SHOWING BOULDER HEIGHTS ESTATES SUBDIVISION NO. 1

LOCATED IN GOVT. LOT 4 AND THE SE1/4 OF THE SW1/4 AND THE SW1/4 OF THE SE1/4 OF  
SEC. 18, T.3N., R.3E., B.M.; GOVT. LOT 1, SEC. 19, T.3N., R.3E., B.M.; GOVT. LOT 1 AND 2,  
AND THE NE1/4 OF THE NE1/4, SEC.24, T.3N., R.2E., B.M.; AND GOVT. LOT 2 AND THE SW1/4  
OF THE SE1/4, SEC. 13, T.3N., R.2E., B.M., BOISE, ADA COUNTY, IDAHO.

2005



- LEGEND**
- SUBDIVISION BOUNDARY
  - SECTION LINE
  - CENTER LINE
  - LOT LINE
  - SETBACK LINE (SEE NOTE 19)
  - EASEMENT LINE (SEE NOTES 14, 15, 16 AND 18)
  - PERMANENT PUBLIC UTILITIES, PROPERTY DRAINAGE AND IRRIGATION EASEMENT (SEE NOTE 1)
  - LOT NUMBER
  - FOUND ALUMINUM CAP MONUMENT
  - FOUND BRASS CAP MONUMENT
  - FOUND HIGHWAY RIGHT-OF-WAY BRASS CAP MONUMENT
  - FOUND 5/8" IRON PIN WITH CAP, PLS 7015, UNLESS NOTED OTHERWISE.
  - SET 5/8" x 30" IRON PIN WITH PLASTIC CAP, PLS 7015
  - SET 1/2" x 24" IRON PIN WITH PLASTIC CAP, PLS 7015
  - FOUND 1/2" IRON PIN
  - CALCULATED POINT NOTHING SET
  - FOUND 1/2" IRON PIN WITH PLASTIC CAP, PLS 946 PER ROS 5502. REPLACED WITH 5/8" IRON PIN WITH CAP, PLS 7015.
  - RM REFERENCE MONUMENT
  - WC WITNESS CORNER

LINE TABLE			LINE TABLE		
LINE	LENGTH	BEARING	LINE	LENGTH	BEARING
L1	70.96	S89°28'19"E	L31	117.61	S20°25'40"W
L2	92.39	S08°25'53"E	L32	121.60	S55°32'16"W
L3	118.80	S66°48'44"E	L33	105.44	S58°27'04"W
L4	116.90	S32°45'09"E	L34	17.00	S71°51'23"W
L5	143.22	S36°31'20"W	L35	88.95	N62°18'43"E
L6	24.00	S49°11'10"E	L36	68.13	N09°24'24"E
L7	50.00	S40°48'49"W	L37	125.68	N06°47'17"E
L8	120.29	S49°11'10"E	L38	48.01	N02°11'49"E
L9	27.01	S34°08'05"E	L39	127.14	N28°14'26"E
L10	124.18	S55°51'55"W	L40	122.47	N03°29'58"E
L11	120.67	N85°07'28"W	L41	188.40	N48°19'48"E
L12	62.84	S03°18'56"E	L42	120.80	S88°30'42"E
L13	69.15	N89°39'33"W	L43	127.25	S78°15'04"E
L14	16.54	N00°20'27"E	L44	26.01	N00°44'00"W
L15	29.04	N20°42'02"W	L45	42.98	N35°11'01"W
L16	15.13	N20°39'49"E	L46	142.15	N48°36'50"W
L17	82.95	N20°42'02"W	L47	110.78	N84°24'27"W
L18	85.65	N49°53'47"W	L48	82.21	N68°01'18"W
L19	148.52	N35°16'43"E	L49	96.18	N35°51'17"W
L20	86.31	N43°18'15"W	L50	37.51	N53°48'39"W
L21	46.28	N46°41'08"E	L51	130.85	N65°00'26"W
L22	160.90	N43°18'15"W	L52	145.55	N78°17'09"W
L23	65.71	S53°50'24"W	L53	267.04	N53°42'09"W
L24	134.48	N72°54'29"W	L54	93.93	S87°16'57"W
L25	107.53	S00°34'34"W	L55	82.43	N61°44'37"W
L26	116.93	S80°39'59"E	L56	100.15	N45°45'03"W
L27	132.02	S23°50'47"E	L57	137.74	N20°42'19"W
L28	118.68	S11°56'09"W	L58	124.46	N05°47'55"W
L29	144.49	N81°14'23"W	L59	138.31	N89°23'57"W
L30	33.70	S06°28'36"E			

SEE SHEET 7 OF 9 FOR GENERAL NOTES

CURVE TABLE					
CURVE	RADIUS	LENGTH	CHORD DIST.	CHORD BRG.	DELTA
C1	1113.00	50.00	50.00	N02°17'50"E	2°34'26"
C2	125.00	45.91	45.65	N10°10'48"W	21°02'29"
C3	135.00	68.79	68.05	N35°17'55"W	29°11'45"
C4	195.00	181.24	174.78	S80°27'57"W	53°15'07"
C5	155.00	44.56	44.41	N81°08'40"W	16°28'22"
C6	195.00	196.07	187.91	N60°34'33"W	57°36'36"
C7	75.00	33.83	33.54	S45°03'08"W	25°50'38"
C8	76.00	41.85	41.33	S16°21'12"W	31°33'15"
C9	20.00	23.53	22.20	S33°07'50"E	67°24'48"
C10	1095.92	252.77	252.21	N24°47'15"W	13°12'55"
C11	3307.04	396.29	396.05	N21°37'51"W	6°51'57"
C157	150.00	229.75	207.94	N65°45'41"W	87°45'33"

\*AFFIDAVIT 106157782  
CHANGE S HARD ROCK WAY TO E HARD ROCK DR



**Balley Engineering, Inc.**

CIVIL ENGINEERING | PLANNING | CADD

1117 E. PLAZA DR., SUITE F  
EAGLE, ID 83618

TEL 208-838-0013  
FAX 208-838-0511