

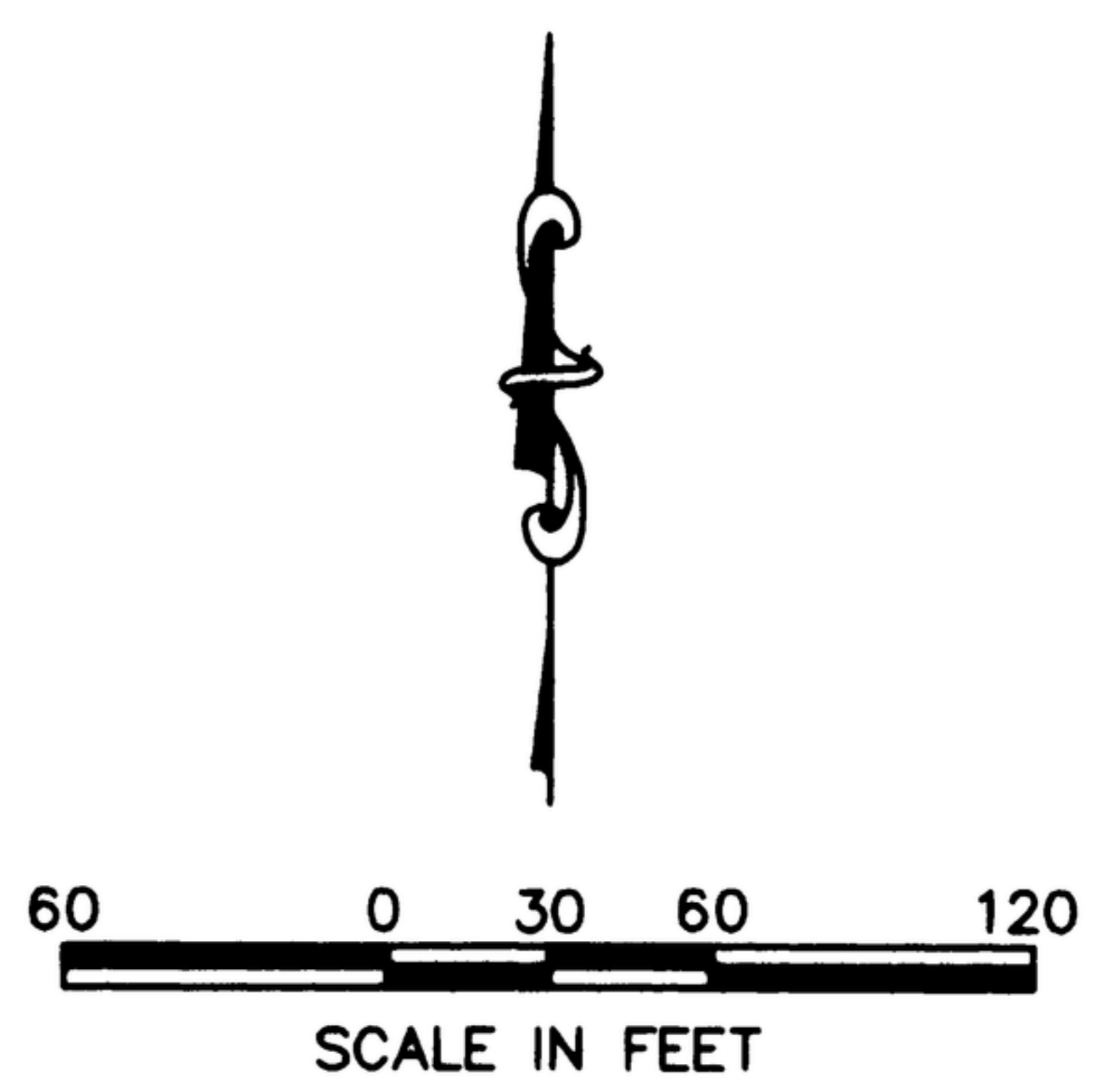
PLAT SHOWING BOULDER HEIGHTS ESTATES SUBDIVISION NO. 1

LOCATED IN GOVT. LOT 4 AND THE SE1/4 OF THE SW1/4 AND THE SW1/4 OF THE SE1/4 OF SEC. 18, T.3N., R.3E., B.M.; GOVT. LOT 1, SEC. 19, T.3N., R.3E., B.M.; GOVT. LOT 1 AND 2, AND THE NE1/4 OF THE NE1/4, SEC.24, T.3N., R.2E., B.M.; AND GOVT. LOT 2 AND THE SW1/4 OF THE SE1/4, SEC. 13, T.3N., R.2E., B.M., BOISE, ADA COUNTY, IDAHO.
2005

SEE SHEET 2
N62°18'43"E
88.95'

SEE SHEET 2

BLOCK 2
8
COMMON

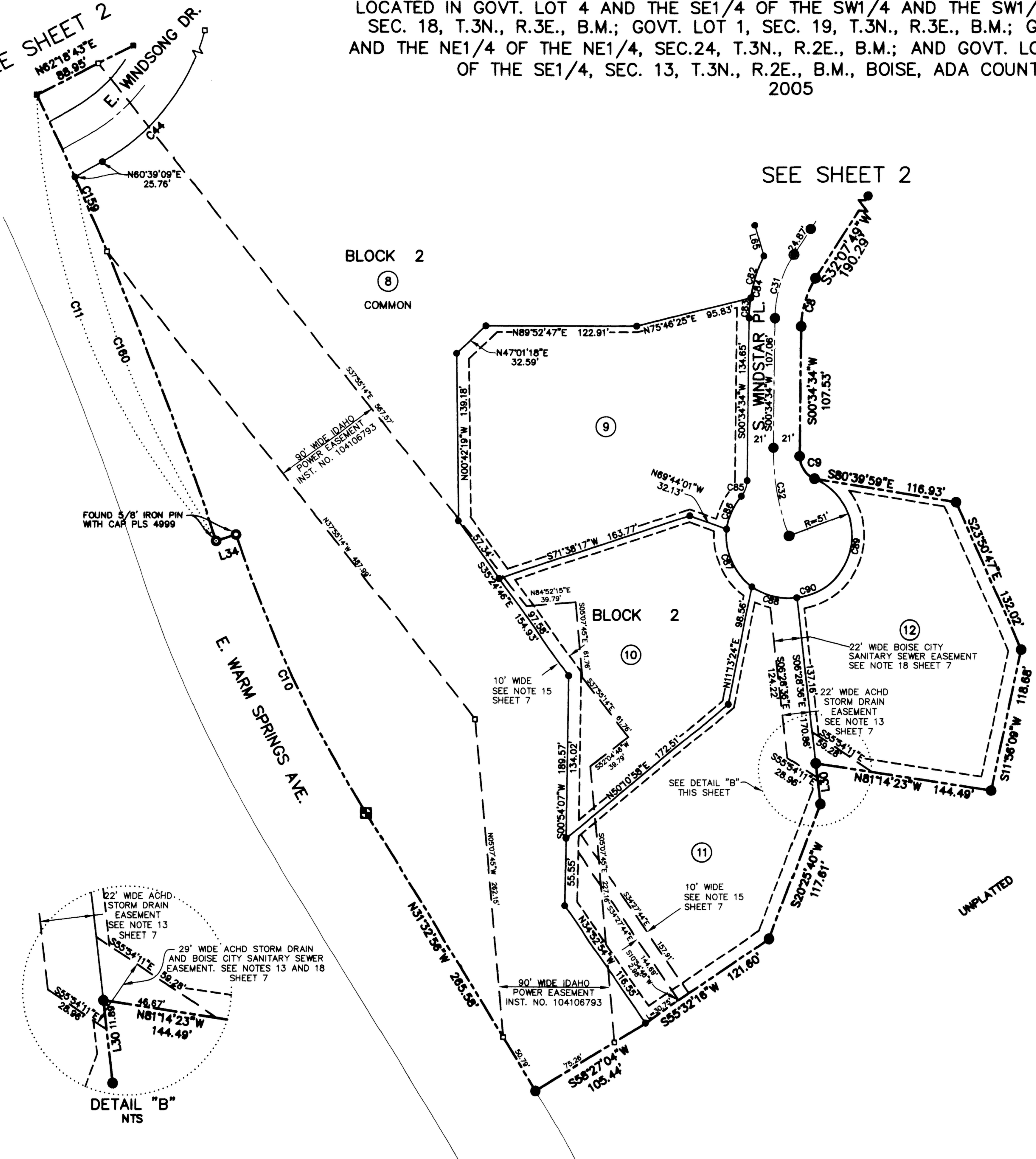
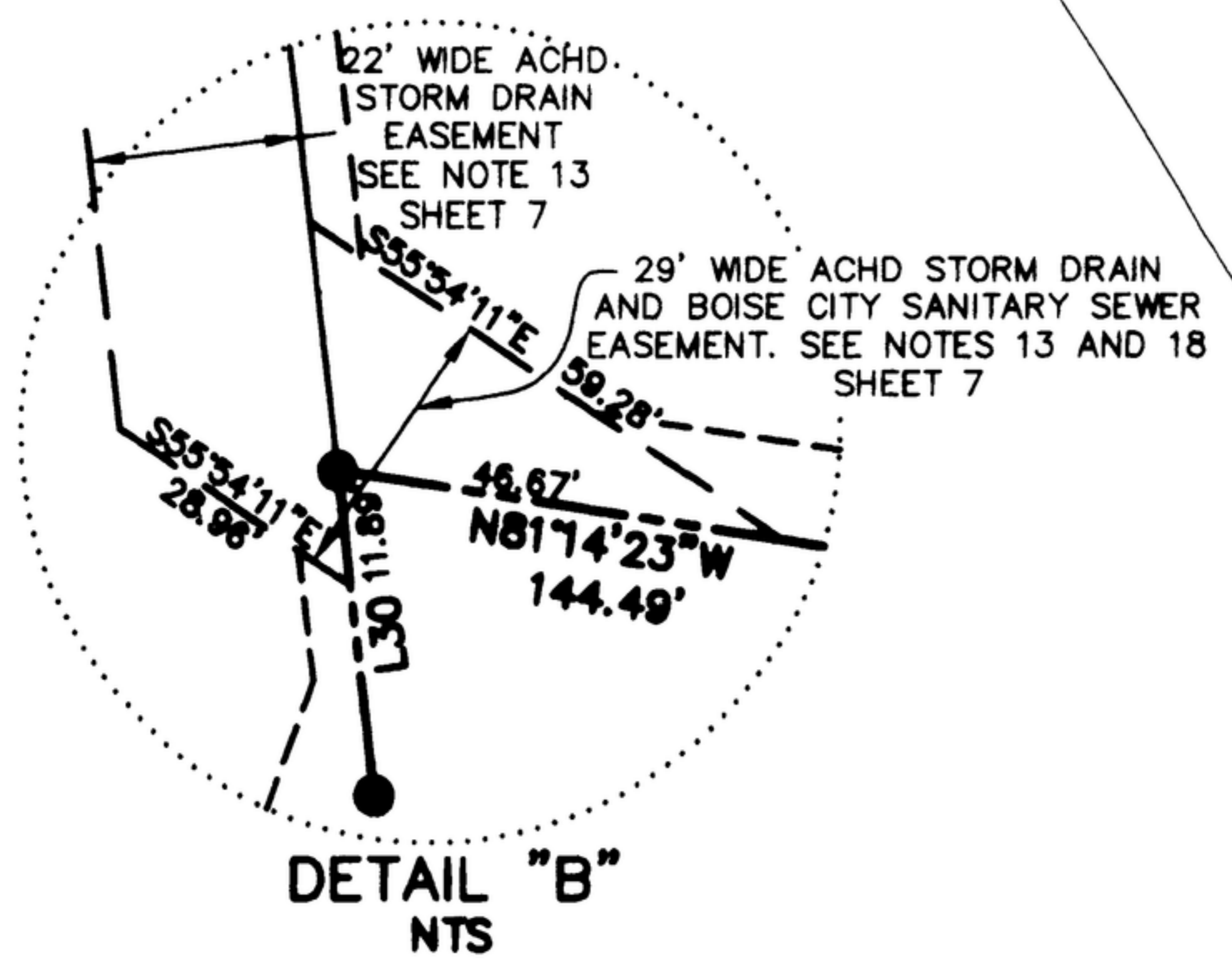


LEGEND

- SUBDIVISION BOUNDARY
- SECTION LINE
- CENTER LINE
- LOT LINE
- SETBACK LINE (SEE NOTE 19)
- EASEMENT LINE (SEE NOTES 14, 15, 16 AND 18)
- PERMANENT PUBLIC UTILITIES, PROPERTY DRAINAGE AND IRRIGATION EASEMENT (SEE NOTE 1)
- 5 LOT NUMBER
- ⊠ FOUND ALUMINUM CAP MONUMENT
- ⊕ FOUND BRASS CAP MONUMENT
- ⊡ FOUND HIGHWAY RIGHT-OF-WAY BRASS CAP MONUMENT
- FOUND 5/8" IRON PIN WITH CAP, PLS 7015, UNLESS NOTED OTHERWISE.
- SET 5/8" x 30" IRON PIN WITH PLASTIC CAP, PLS 7015
- SET 1/2" x 24" IRON PIN WITH PLASTIC CAP, PLS 7015
- FOUND 1/2" IRON PIN
- CALCULATED POINT NOTHING SET
- FOUND 1/2" IRON PIN WITH PLASTIC CAP, PLS 946 PER ROS 5502. REPLACED WITH 5/8" IRON PIN WITH CAP, PLS 7015.
- RM REFERENCE MONUMENT
- WC WITNESS CORNER

NOTE: SEE RECORD OF SURVEY NO. 6649 FOR ADDITIONAL INFORMATION.

SEE SHEET 7 OF 9 FOR DATA TABLES AND GENERAL NOTES.



UNPLATTED



Bailey Engineering, Inc.

CIVIL ENGINEERING | PLANNING | CADD
1117 E. PLAZA DR., SUITE F
EAGLE, ID 83616
TEL 208-938-0013
FAX 208-938-0516