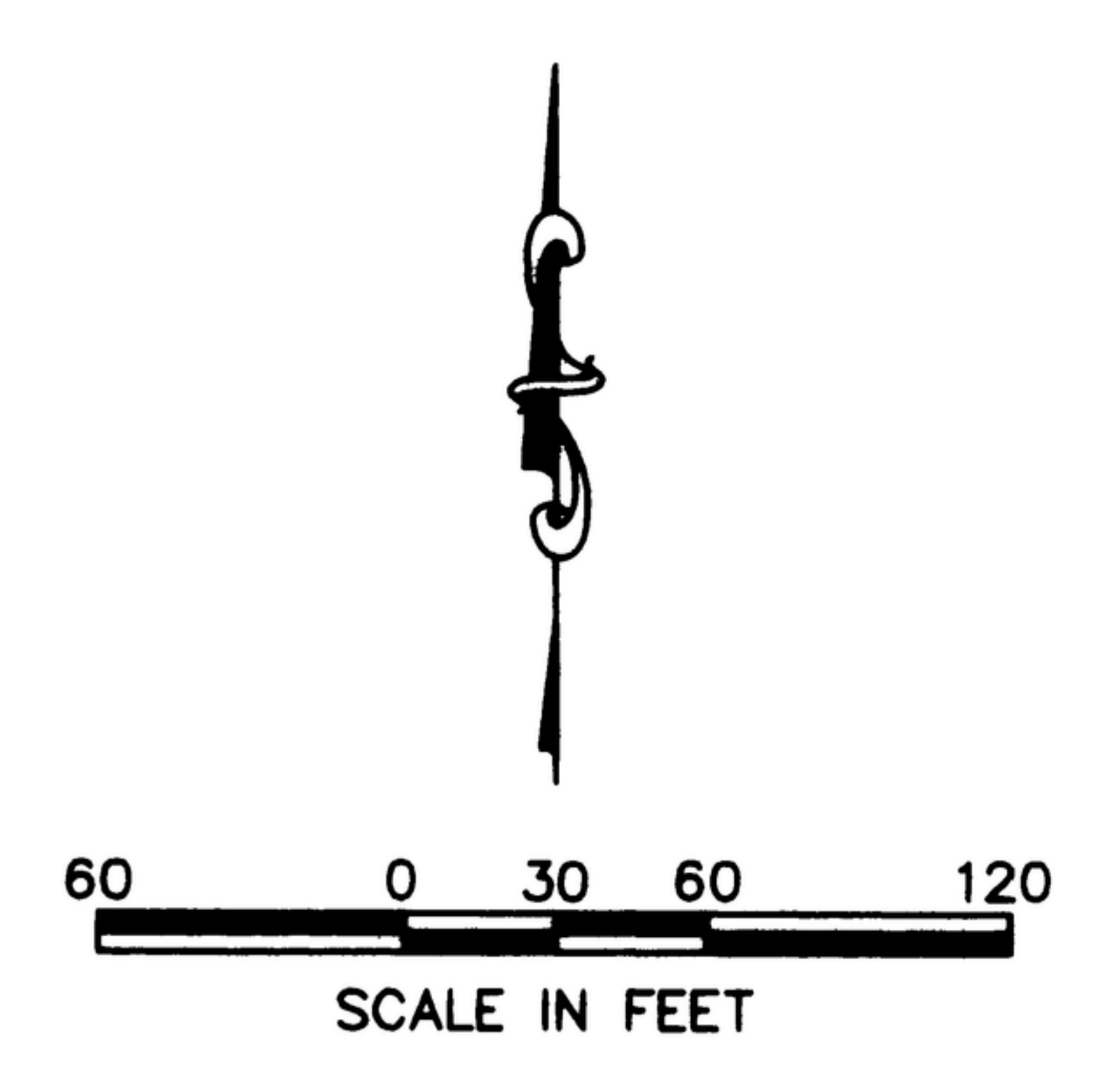
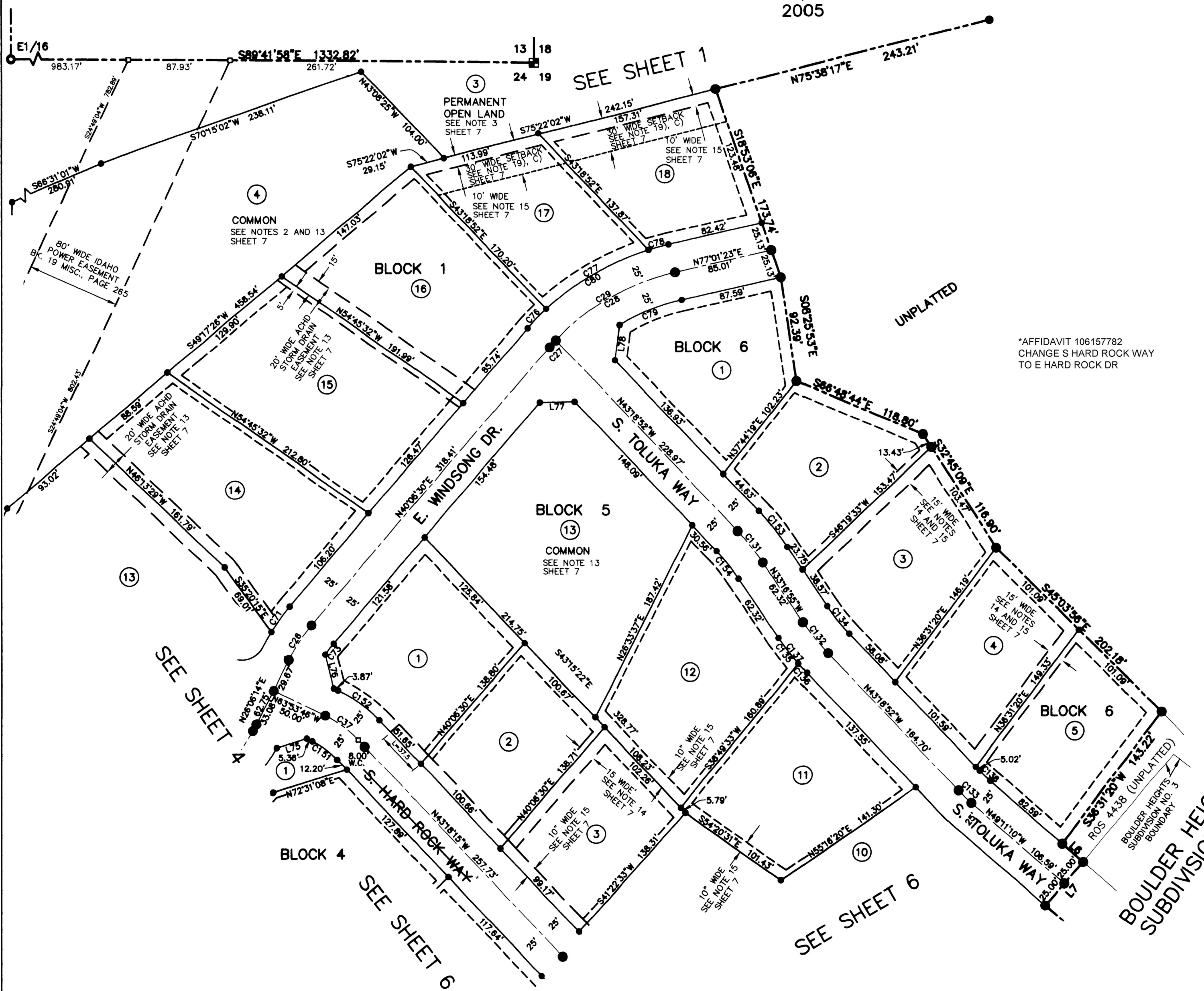


# PLAT SHOWING BOULDER HEIGHTS ESTATES SUBDIVISION NO. 1

LOCATED IN GOVT. LOT 4 AND THE SE1/4 OF THE SW1/4 AND THE SW1/4 OF THE SE1/4 OF SEC. 18, T.3N., R.3E., B.M.; GOVT. LOT 1, SEC. 19, T.3N., R.3E., B.M.; GOVT. LOT 1 AND 2, AND THE NE1/4 OF THE NE1/4, SEC.24, T.3N., R.2E., B.M.; AND GOVT. LOT 2 AND THE SW1/4 OF THE SE1/4, SEC. 13, T.3N., R.2E., B.M., BOISE, ADA COUNTY, IDAHO.  
2005



- LEGEND**
- SUBDIVISION BOUNDARY
  - SECTION LINE
  - CENTER LINE
  - LOT LINE
  - SETBACK LINE (SEE NOTE 19)
  - EASEMENT LINE (SEE NOTES 14, 15, 16 AND 18)
  - PERMANENT PUBLIC UTILITIES, PROPERTY DRAINAGE AND IRRIGATION EASEMENT (SEE NOTE 1)
  - ⑤ LOT NUMBER
  - ⊕ FOUND ALUMINUM CAP MONUMENT
  - ⊕ FOUND BRASS CAP MONUMENT
  - ⊕ FOUND HIGHWAY RIGHT-OF-WAY BRASS CAP MONUMENT
  - FOUND 5/8" IRON PIN WITH CAP, PLS 7015, UNLESS NOTED OTHERWISE.
  - SET 5/8" x 30" IRON PIN WITH PLASTIC CAP, PLS 7015
  - SET 1/2" x 24" IRON PIN WITH PLASTIC CAP, PLS 7015
  - FOUND 1/2" IRON PIN
  - CALCULATED POINT NOTHING SET
  - FOUND 1/2" IRON PIN WITH PLASTIC CAP, PLS 946 PER ROS 5502. REPLACED WITH 5/8" IRON PIN WITH CAP, PLS 7015.
  - RM REFERENCE MONUMENT
  - WC WITNESS CORNER
- NOTE: SEE RECORD OF SURVEY NO. 6649 FOR ADDITIONAL INFORMATION.

\*AFFIDAVIT 106157782  
CHANGE S HARD ROCK WAY  
TO E HARD ROCK DR

SEE SHEET 7 OF 9 FOR DATA TABLES AND GENERAL NOTES.



BOULDER HEIGHTS  
SUBDIVISION NO. 3

**Bailey Engineering, Inc.**  
 CIVIL ENGINEERING | PLANNING | CADD  
 1117 E. PLAZA DR., SUITE F EAGLE, ID 83616 TEL 208-938-0013 FAX 208-938-0516