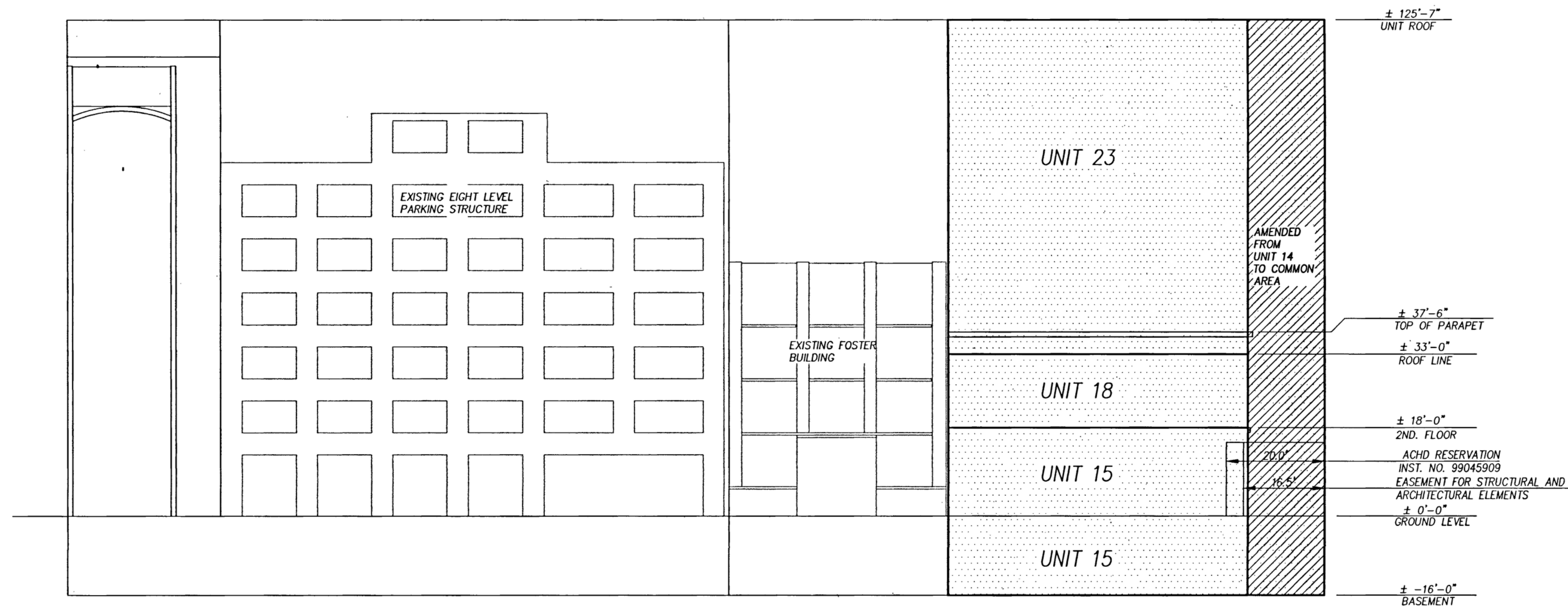


PLAT OF FRONT STREET CONDOMINIUMS PROJECT AMENDMENT

AMENDMENT OF UNITS 12 AND 14 OF THE FRONT STREET CONDOMINIUMS
SITUATED IN THE
NW 1/4, SECTION 10, TOWNSHIP 3 NORTH, RANGE 2 EAST, B.M.
BOISE, ADA COUNTY, IDAHO
2005

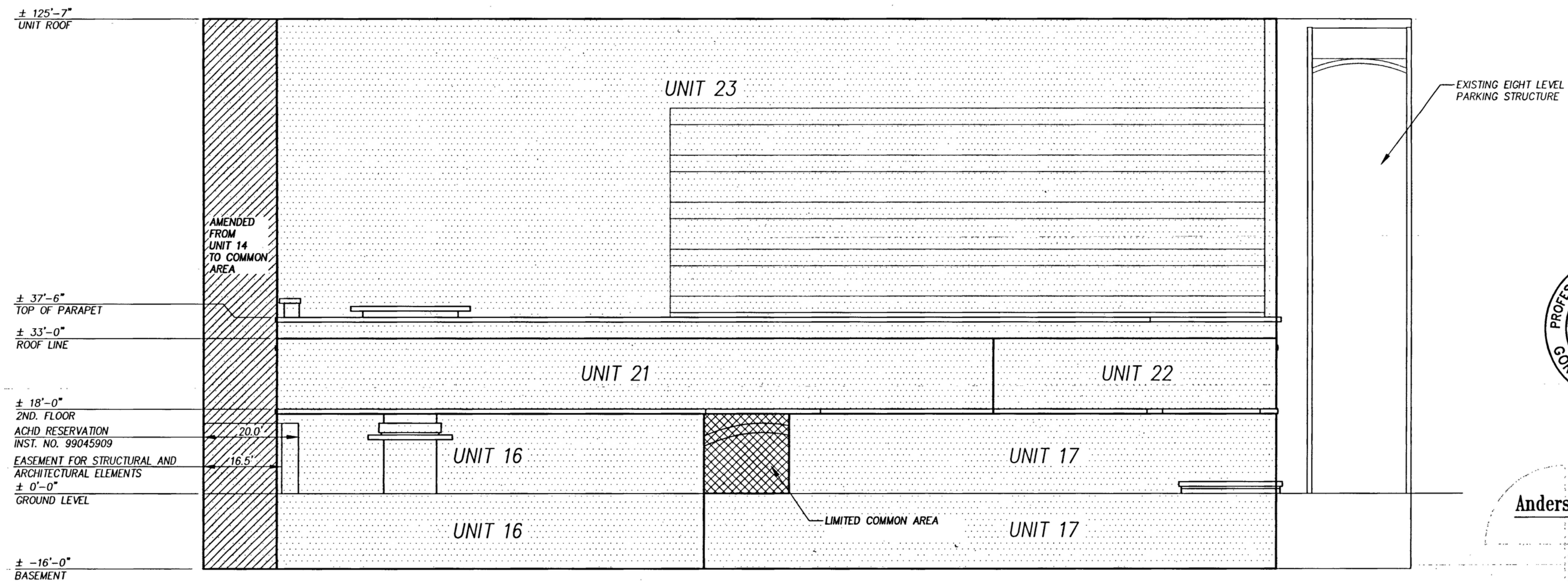


WEST ELEVATION (ALONG S. 9TH STREET)
SCALE: 1" = 20'

LEGEND

- COMMON AREA
- LIMITED COMMON AREA
- AMENDED AREA
- AMENDED UNITS BOUNDARY
- EXISTING STRUCTURE

- NOTES**
- UNIT 23 CONSISTS OF THE REMAINING AIRSPACE (UP TO 125'-7") WHICH IS A PART OF ORIGINAL UNITS 12 AND 14 OF THE FRONT STREET CONDOMINIUMS.
 - THE NEWLY CREATED UNITS 15, 16, AND 17 EXIST AT THE FIRST FLOOR LEVEL ONLY. THE BASEMENT AREA DEPICTED IN THE ELEVATIONS IS A REDISTRIBUTION OF ORIGINAL UNITS 12 AND 14 OF THE FRONT STREET CONDOMINIUMS.



EAST ELEVATION (ALONG S. 8TH STREET)
SCALE: 1" = 20'



Anderson Survey Group, Inc.
Land Surveying Services
357 Watertower Ln., Ste. F
Meridian, ID. 83642
(208) 888-7345