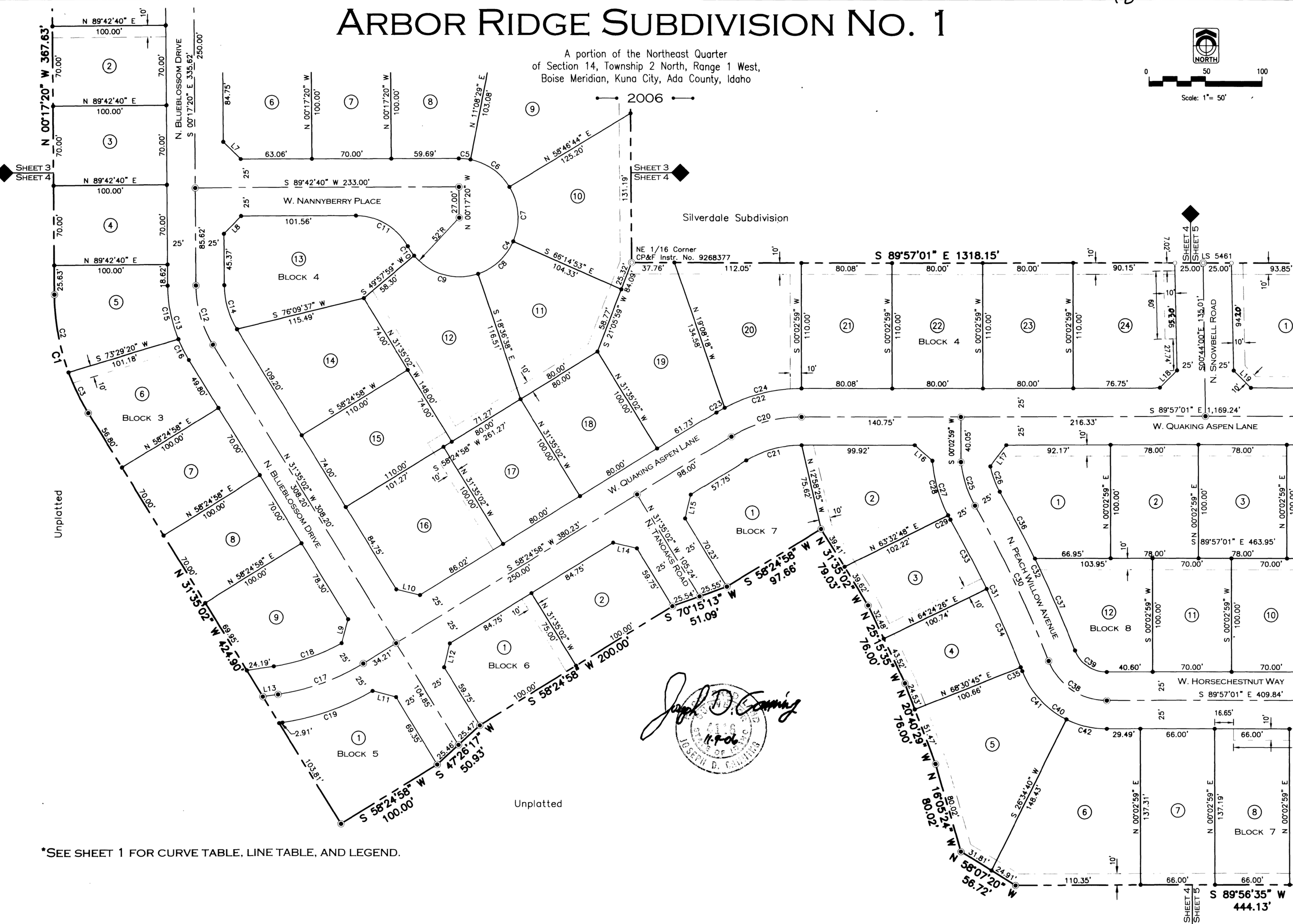
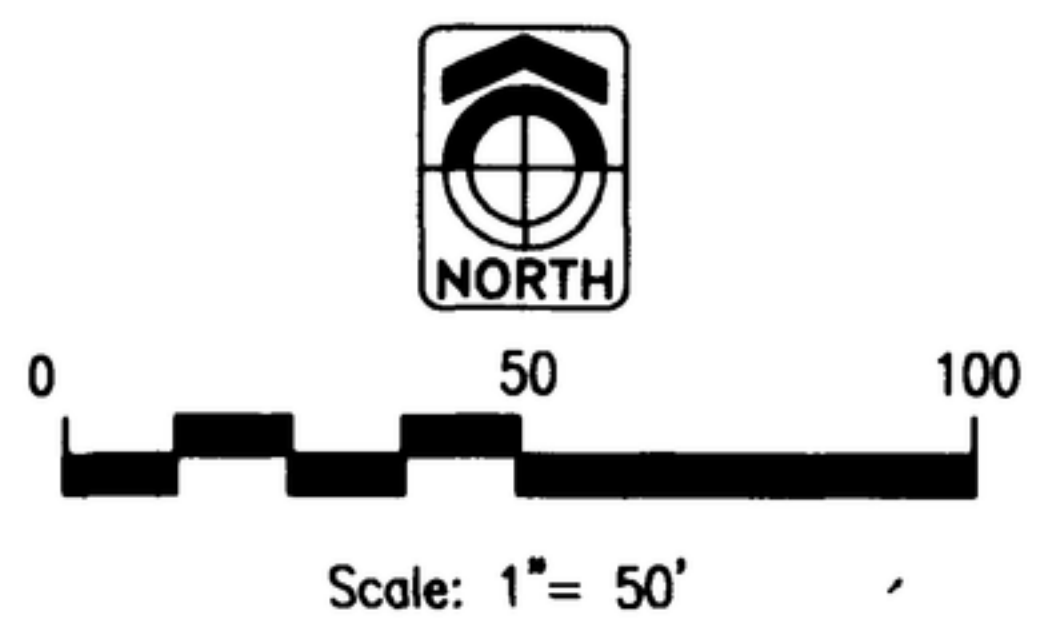


ARBOR RIDGE SUBDIVISION No. 1

A portion of the Northeast Quarter
of Section 14, Township 2 North, Range 1 West,
Boise Meridian, Kuna City, Ada County, Idaho



Joseph D. Conning
11-9-06
JOSEPH D. CONNING
REGISTERED PROFESSIONAL ENGINEER
STATE OF IDAHO

*SEE SHEET 1 FOR CURVE TABLE, LINE TABLE, AND LEGEND.