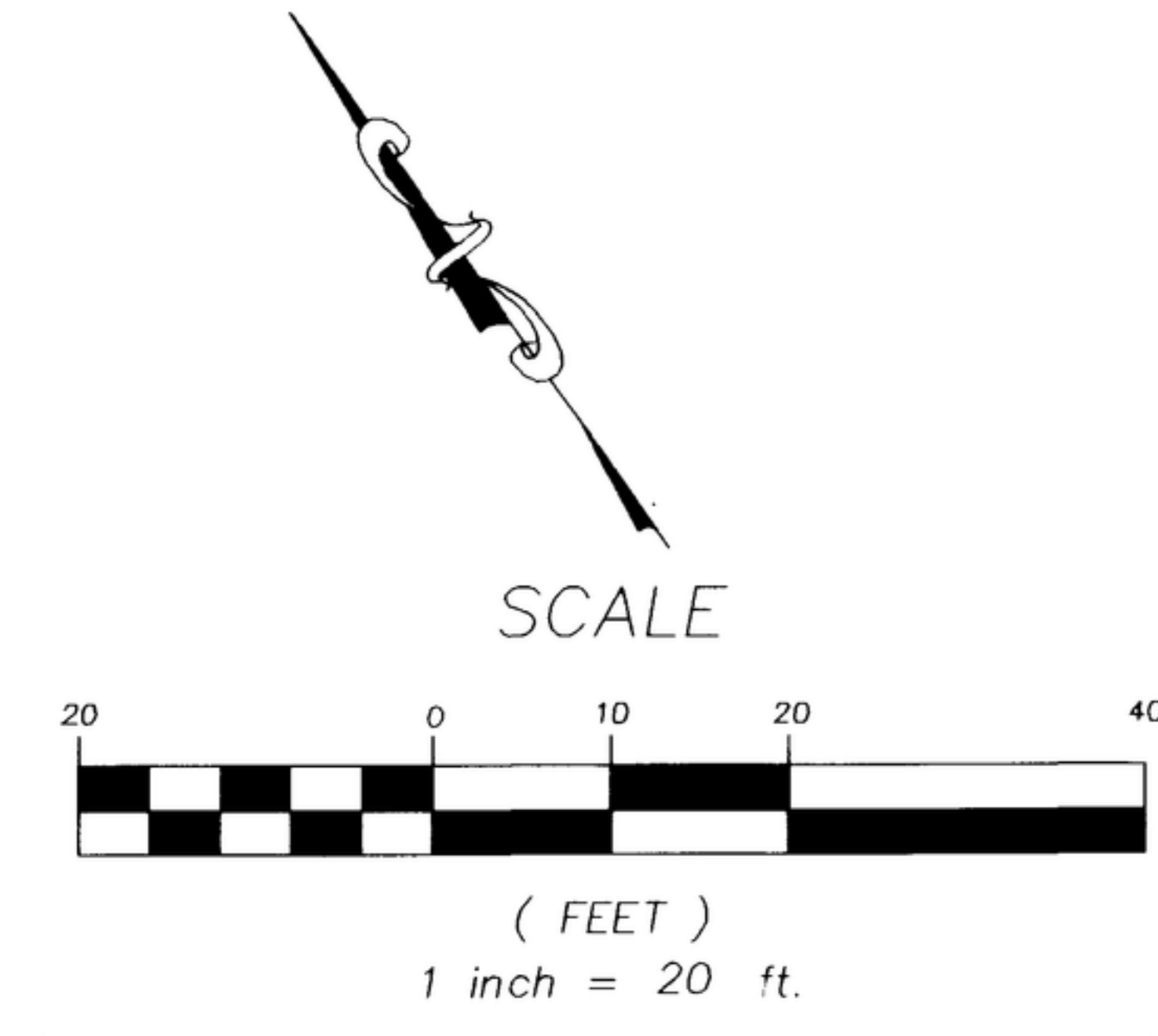
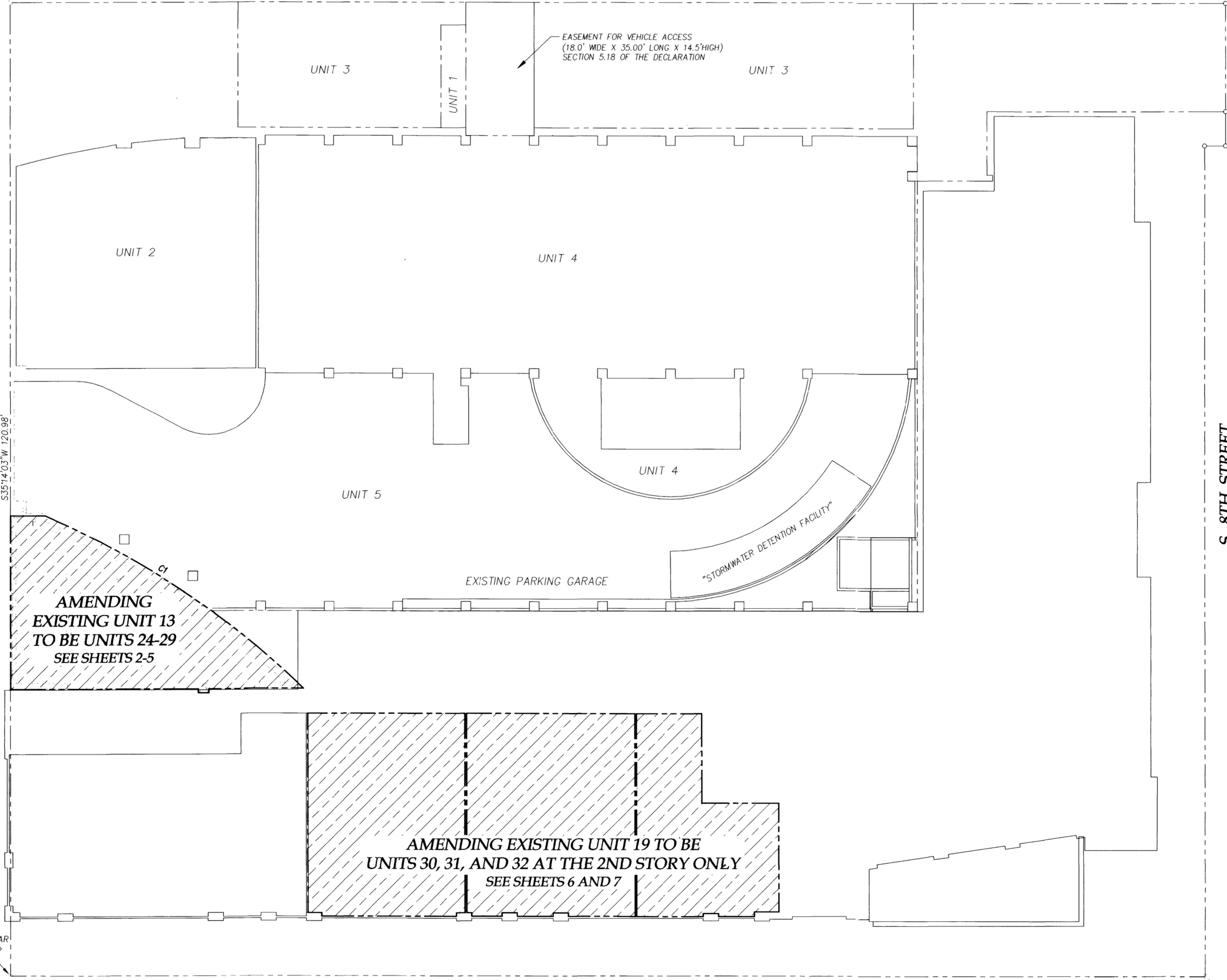


PLAT OF
**FRONT STREET CONDOMINIUMS
 PROJECT AMENDMENT NO.2**

AMENDMENT OF UNIT 13 OF THE FRONT STREET CONDOMINIUMS
 AND UNIT 19 OF THE FRONT STREET CONDOMINIUMS PROJECT AMENDMENT
 SITUATED IN THE NW 1/4, SECTION 10, TOWNSHIP 3 NORTH, RANGE 2 EAST,
 B.M. BOISE, ADA COUNTY, IDAHO
 2007



W. FRONT STREET



EASEMENT FOR VEHICLE ACCESS
 (18.0' WIDE X 35.00' LONG X 14.5' HIGH)
 SECTION 5.18 OF THE DECLARATION

EXISTING OWNERSHIP

- GREATER BOISE AUDITORIUM DISTRICT
 UNITS 1, AND 2
- RIVERWALK, LLC
 UNIT 3
- CAPITOL CITY DEVELOPMENT CORPORATION
 PARKING GARAGE
 UNITS 4-11
- BODO DEVELOPMENT, LLC
 UNITS 13, 16, 17, 19, 21, 23
- IDAHO TRUST NATIONAL BANK
 UNITS 15 AND 18
- RISI CORPORATION
 UNIT 22
- BPRK INVESTMENTS, LLC.
 UNIT 20

NOTES:

1. FOR ADDITIONAL UNIT, OR BOUNDARY INFORMATION, SEE THE PLAT OF FRONT STREET CONDOMINIUMS, FILED FOR RECORD IN THE OFFICE OF THE ADA COUNTY RECORDER, BOISE, IDAHO IN BOOK 90 OF PLATS AT PAGES 10519 THROUGH 10528, OR THE PLAT OF THE FRONT STREET CONDOMINIUMS PROJECT AMENDMENT, FILED FOR RECORD IN THE OFFICE OF THE ADA COUNTY RECORDER, BOISE, IDAHO IN BOOK 93 OF PLATS AT PAGES 11121 THROUGH 11126.
2. THE ELEVATION DIMENSIONS ARE BASED ON SAID FRONT STREET CONDOMINIUMS PROJECT AMENDMENT.

LEGEND

- AMENDED AREA
- PROJECT BOUNDARY
- EXISTING BUILDING
- EXISTING PROPERTY

CURVE TABLE

CURVE	RADIUS	LENGTH	DELTA	CHORD BEARING	CHORD
C1	230.87	82.42	20°27'14"	N21°02'10"W	81.98



Anderson Survey Group, Inc.

Land Surveying Services
 357 Watertower Ln., Ste. F
 Meridian, ID. 83642
 (208) 888-7345

© ANDERSON SURVEY GROUP, INC.