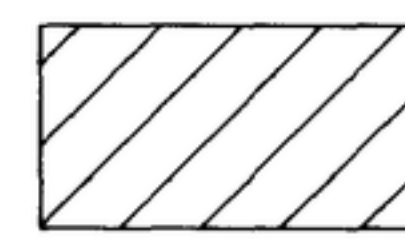


PLAT OF
**FRONT STREET CONDOMINIUMS
 PROJECT AMENDMENT NO.2**
 AMENDMENT OF UNIT 13 OF THE FRONT STREET CONDOMINIUMS
 AND UNIT 19 OF THE FRONT STREET CONDOMINIUMS PROJECT AMENDMENT
 SITUATED IN THE NW 1/4, SECTION 10, TOWNSHIP 3 NORTH, RANGE 2 EAST,
 B.M. BOISE, ADA COUNTY, IDAHO
 2007

LEGEND



AREA OF THE AMENDMENT

AMENDED UNITS BOUNDARY

EXISTING STRUCTURE

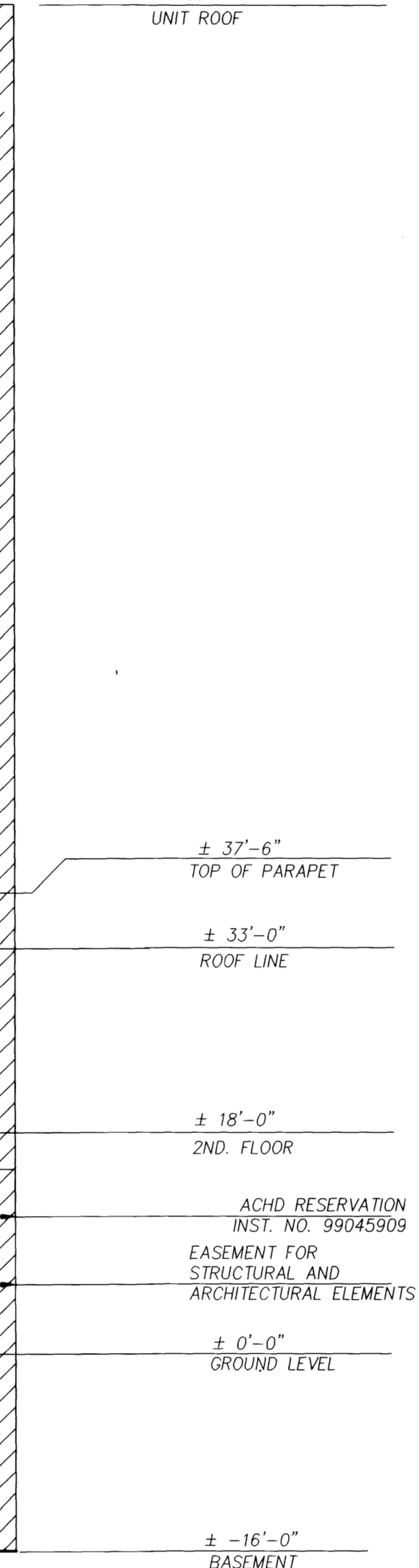
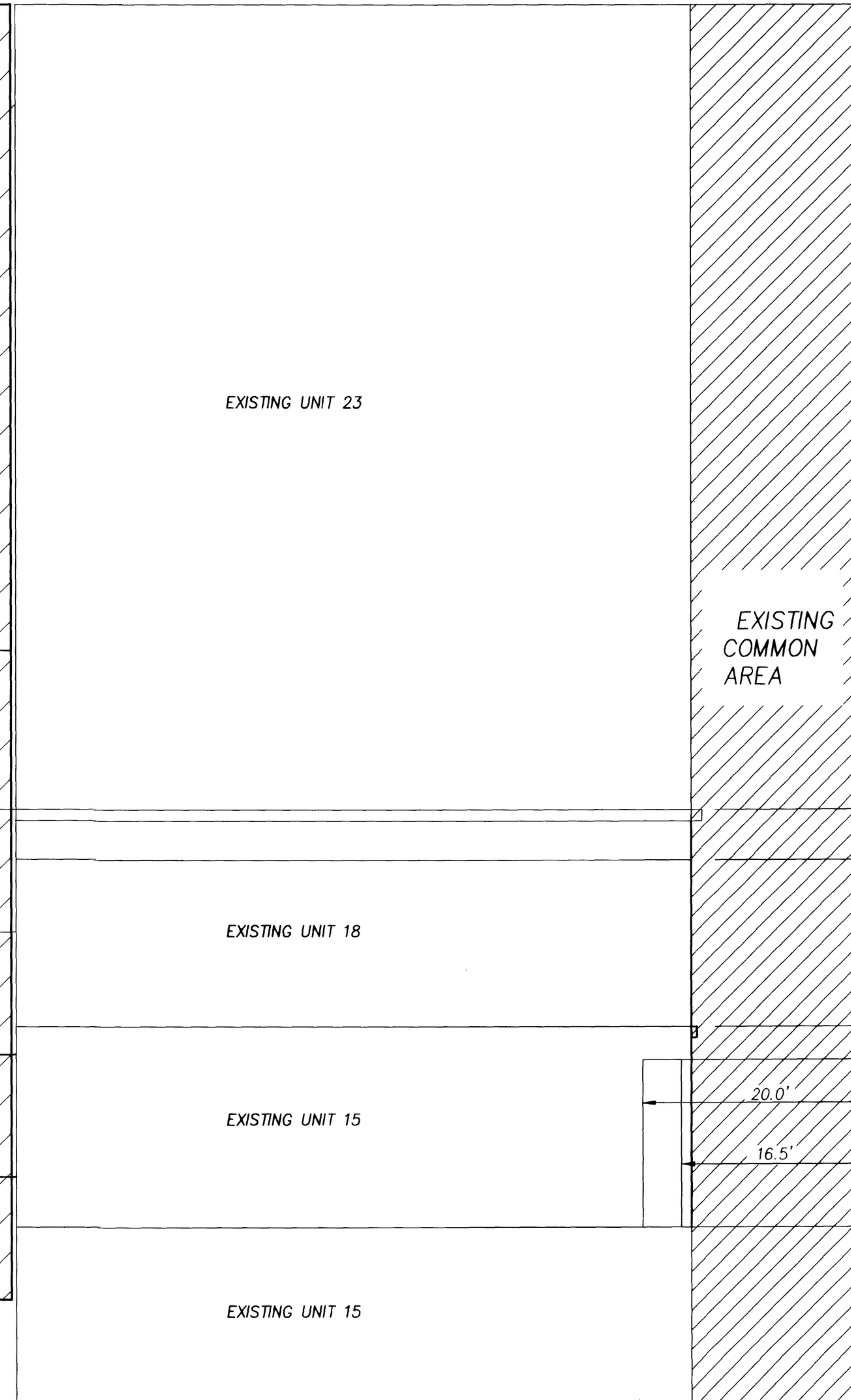
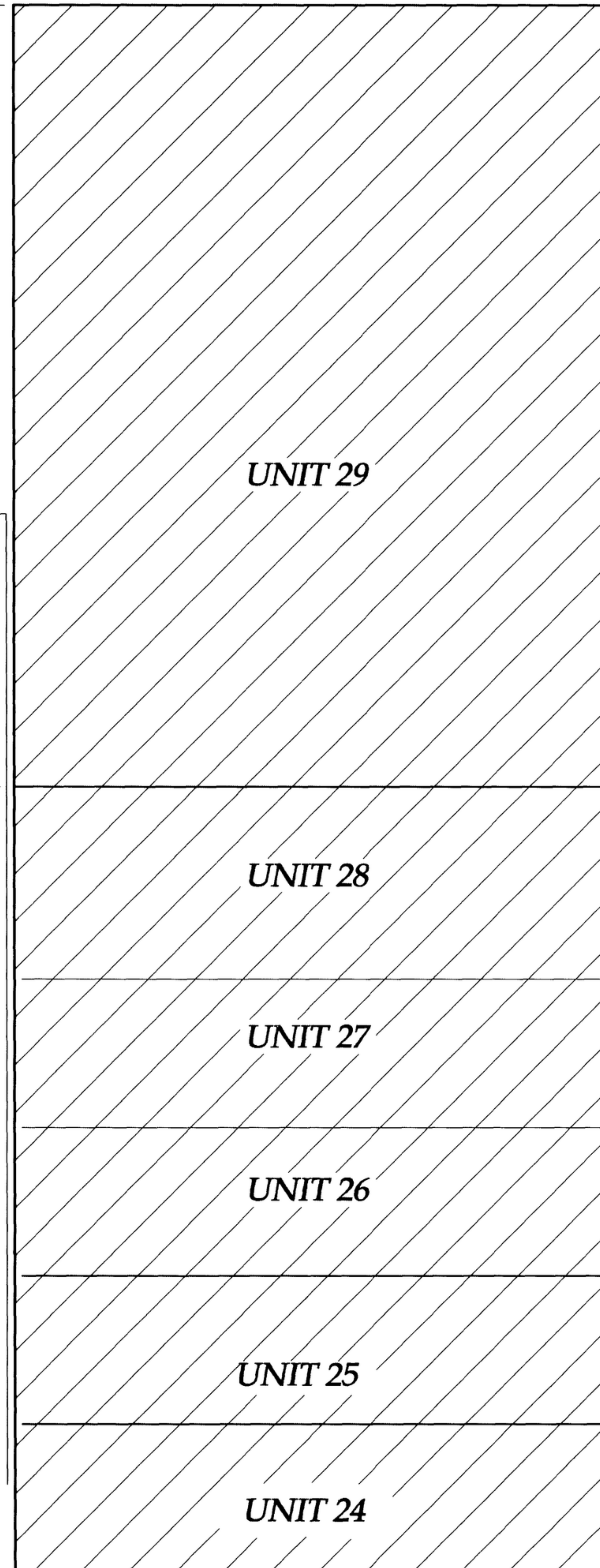
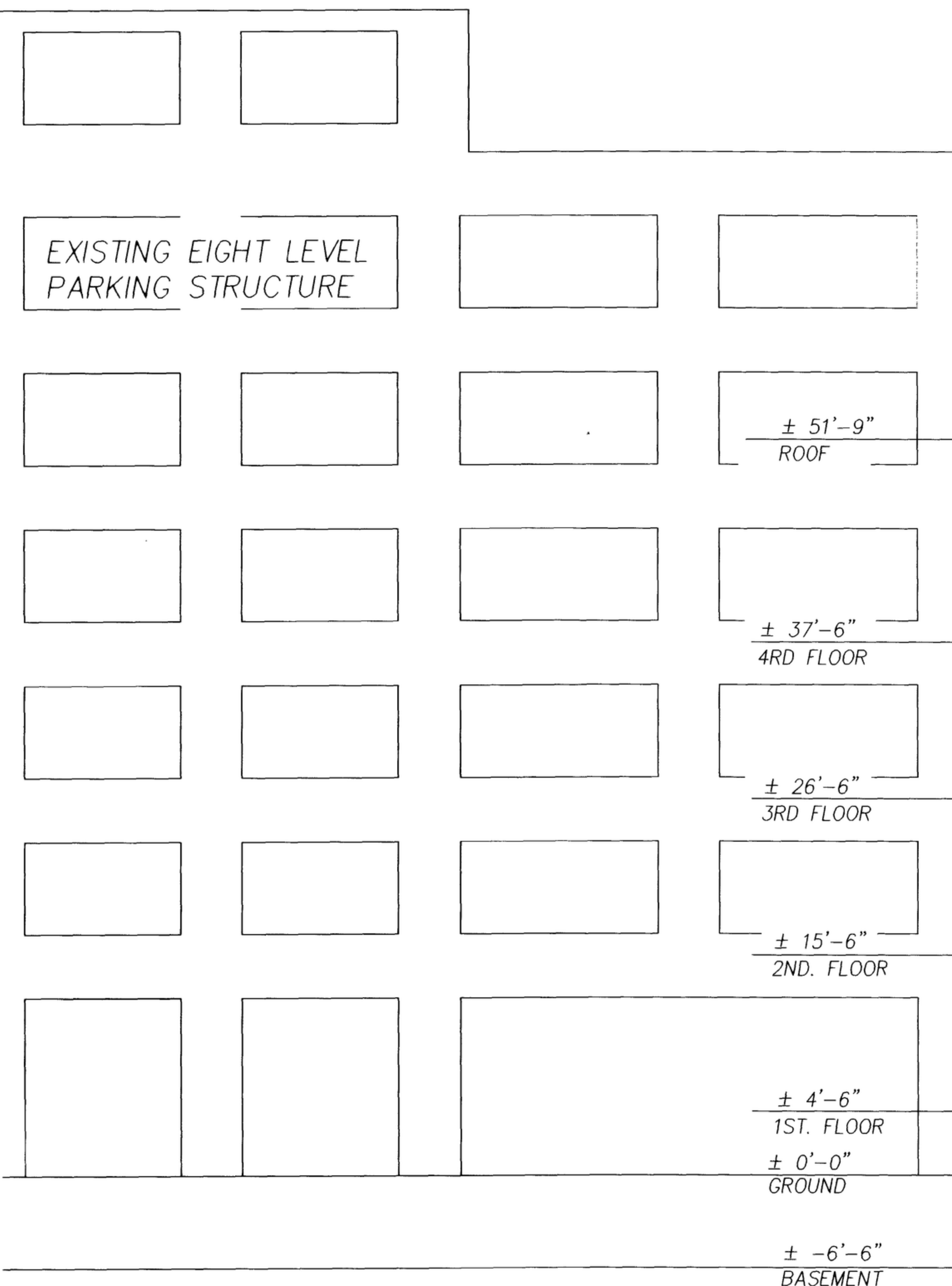
NOTE

1. UNIT 29 CONSISTS OF THE REMAINING AIRSPACE ABOVE THE ROOF (UP TO 125'-7") WHICH IS A PART OF ORIGINAL UNIT 13 OF THE FRONT STREET CONDOMINIUMS.

2. THE ELEVATION DIMENSIONS ARE BASED ON FRONT STREET CONDOMINIUMS PROJECT AMENDMENT., FILED FOR RECORD IN THE OFFICE OF THE ADA COUNTY RECORDER, BOISE, IDAHO IN BOOK 93 OF PLATS AT PAGES 11121 THROUGH 11126.

± 109'-7"
UNIT ROOF

± 109'-7"
UNIT ROOF



Anderson Survey Group, Inc.

Land Surveying Services
 357 Watertower Ln., Ste. F
 Meridian, ID. 83642
 (208) 888-7345



**WEST ELEVATION - ALONG S. 9TH STREET
 (ORIGINAL UNIT 13 "THE FOSTER BUILDING")**

SCALE: 1" = 10'

ANDERSON SURVEY GROUP, INC.

SHEET 5 OF 8