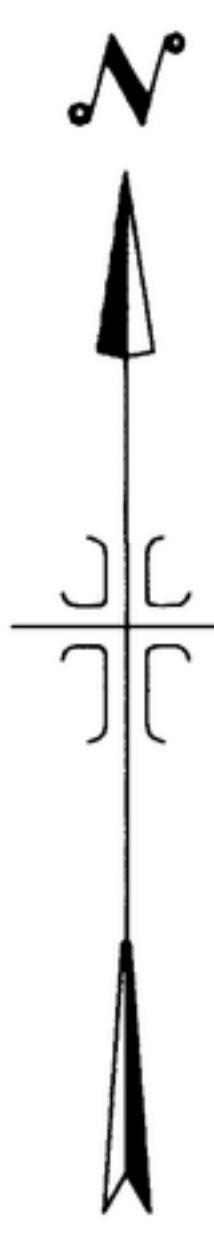
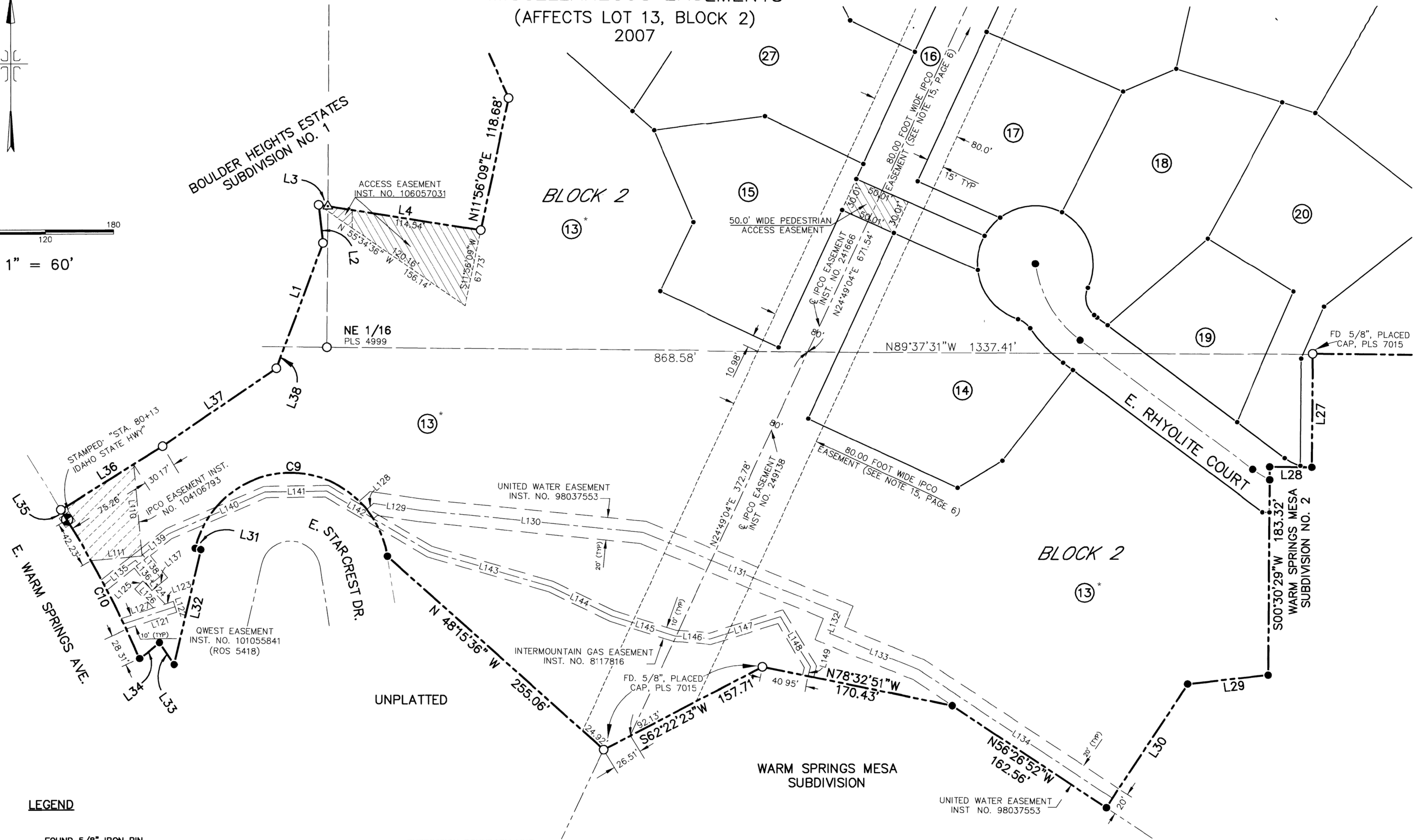


* 2023017912
Partial vacation of easements
and plat notes associated with
Lot 13 Block 2

PLAT SHOWING BOULDER HEIGHTS ESTATES SUBDIVISION NO. 3 MISCELLANEOUS EASEMENTS (AFFECTS LOT 13, BLOCK 2) 2007



0 30 60 120 180
SCALE 1" = 60'



LEGEND

- FOUND 5/8" IRON PIN, PLS 7015 OR AS NOTED
 - FOUND BRASS CAP MONUMENT
 - ⊙ FOUND ALUMINUM CAP MONUMENT
 - ⊠ FOUND HIGHWAY RIGHT-OF-WAY MONUMENT WITH 3" BRASS CAP
 - SET 1/2" x 24" IRON PIN, PLS 7015
 - SET 5/8" x 30" IRON PIN, PLS 7015
 - △ CALCULATED POINT
-
- SUBDIVISION BOUNDARY LINE
 - LOT LINE
 - EXISTING PROPERTY LINE
 - SECTION LINE
 - 1/16 SECTION LINE
 - CENTERLINE
 - PERMANENT PUBLIC UTILITIES, PROPERTY DRAINAGE, AND IRRIGATION EASEMENT (SEE GENERAL NOTE 1)
 - EASEMENT (NEW), AS NOTED
 - EXISTING EASEMENT LINE, AS NOTED
 - ⑦ LOT NO.



DEVELOPER:
J. H. WISE & SONS, INC.
BOISE, IDAHO

05-214
SHEET 9 OF 11

ISG IDAHO SURVEY GROUP, P.C.

1450 E. WATERTOWER ST.
SUITE 150
MERIDIAN, IDAHO 83642
PH. (208) 846-8570
FAX (208) 884-5399

SEE SHEET 6 OF 11 FOR DATA TABLES AND GENERAL NOTES