

FINAL PLAT SHOWING REFLECTION RIDGE SUBDIVISION NO. 1

LOCATED WITHIN A PORTION OF THE N 1/2 OF THE SE 1/4 OF
SECTION 30, TOWNSHIP 3 NORTH, RANGE 1 EAST, BOISE MERIDIAN
CITY OF MERIDIAN, ADA COUNTY, IDAHO

2013
FOX LAND SURVEYS, INC.



SCALE: 1"=50'

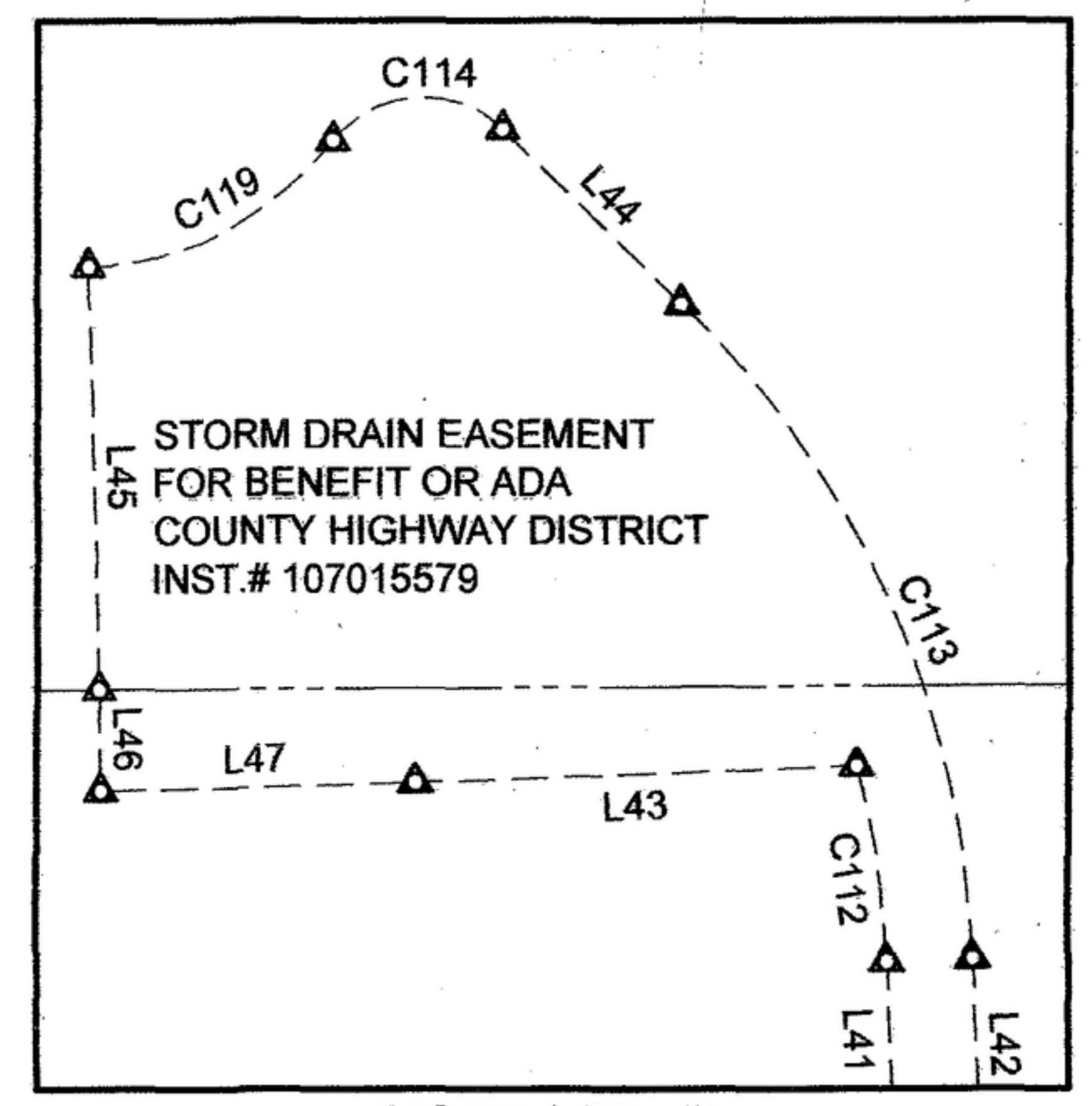
LEGEND

- BOUNDARY LINE
- SECTION LINE
- 1/4 SECTION LINE
- 1/16 SECTION LINE
- CENTER LINE
- RECORD BOUNDARY LINE
- PUBLIC UTILITY, DRAINAGE & IRRIGATION EASEMENT
- 10 FOOT WIDE PRESSURE IRRIGATION EASEMENT (SEE NOTE 8 ON SHEET 1)
- TIE LINE
- FOUND BRASS CAP
- FOUND 5/8" REBAR WITH CAP STAMPED "FLSI PLS 7612"
- SET 5/8" REBAR WITH PLASTIC CAP STAMPED "FLSI PLS 7612"
- SET 1/2" REBAR WITH PLASTIC CAP STAMPED "FLSI PLS 7612"
- SET 1" COPPER CAP WITH MAGNETIC INSERT "FLSI PLS 7612"
- CALCULATED POINT, NOTHING FOUND, NOTHING SET
- WITNESS CORNER, DISTANCE AS NOTED
- SLOPE, WALL, DRAINAGE & UTILITY EASEMENT ON SHEETS 2 & 3, SEE EASEMENT NOTE ON PAGES 2 & 3.

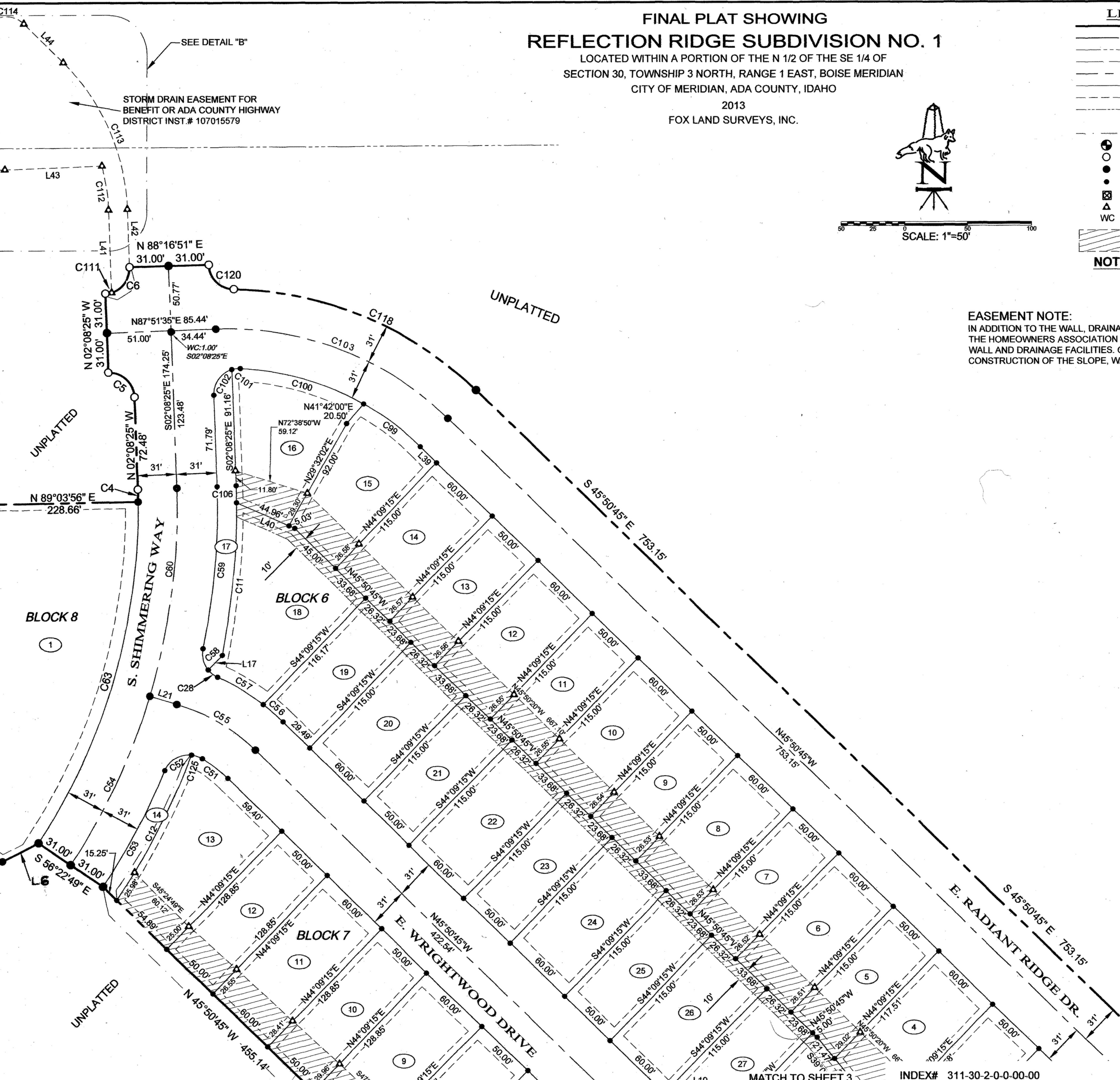
NOTE: SEE SHEETS 1 & 5 FOR CURVE AND LINE TABLES.

EASEMENT NOTE:

IN ADDITION TO THE WALL, DRAINAGE AND UTILITY, THIS AREA IS RESERVED AS AN EASEMENT BENEFITING THE HOMEOWNERS ASSOCIATION FOR THE PURPOSE OF CONSTRUCTING AND MAINTAINING A SLOPE, WALL AND DRAINAGE FACILITIES. OWNERS OF LOTS MAY NOT IMPEDE ACCESS FOR THE MAINTENANCE OR CONSTRUCTION OF THE SLOPE, WALL, DRAINAGE FACILITIES OR UTILITIES WITHIN THE EASEMENT.



DETAIL B
NTS



PREPARED BY
FOX LAND SURVEYS, INC.
1515 S. SHOSHONE ST., BOISE ID 83705
208-342-7957 - FAX 208-342-7437