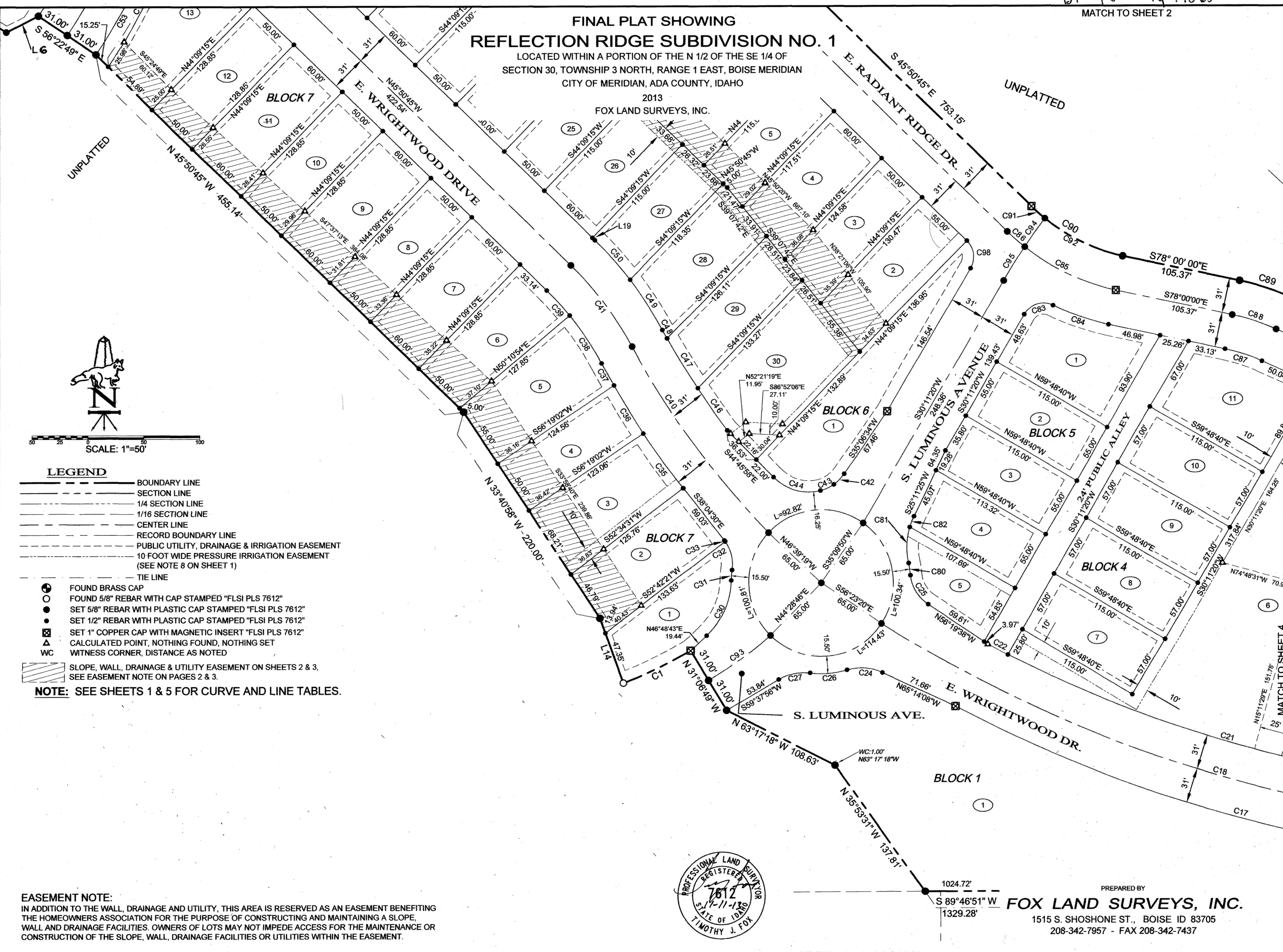


FINAL PLAT SHOWING REFLECTION RIDGE SUBDIVISION NO. 1

LOCATED WITHIN A PORTION OF THE N 1/2 OF THE SE 1/4 OF
SECTION 30, TOWNSHIP 3 NORTH, RANGE 1 EAST, BOISE MERIDIAN
CITY OF MERIDIAN, ADA COUNTY, IDAHO

2013
FOX LAND SURVEYS, INC.



SCALE: 1"=50'

LEGEND

- BOUNDARY LINE
- SECTION LINE
- 1/4 SECTION LINE
- 1/16 SECTION LINE
- CENTER LINE
- RECORD BOUNDARY LINE
- PUBLIC UTILITY, DRAINAGE & IRRIGATION EASEMENT
- 10 FOOT WIDE PRESSURE IRRIGATION EASEMENT (SEE NOTE 8 ON SHEET 1)
- TIE LINE

- FOUND BRASS CAP
- FOUND 5/8" REBAR WITH CAP STAMPED "FLSI PLS 7612"
- SET 5/8" REBAR WITH PLASTIC CAP STAMPED "FLSI PLS 7612"
- SET 1/2" REBAR WITH PLASTIC CAP STAMPED "FLSI PLS 7612"
- ⊠ SET 1" COPPER CAP WITH MAGNETIC INSERT "FLSI PLS 7612"
- △ CALCULATED POINT, NOTHING FOUND, NOTHING SET
- WC WITNESS CORNER, DISTANCE AS NOTED

/// SLOPE, WALL, DRAINAGE & UTILITY EASEMENT ON SHEETS 2 & 3, SEE EASEMENT NOTE ON PAGES 2 & 3.

NOTE: SEE SHEETS 1 & 5 FOR CURVE AND LINE TABLES.

EASEMENT NOTE:
IN ADDITION TO THE WALL, DRAINAGE AND UTILITY, THIS AREA IS RESERVED AS AN EASEMENT BENEFITING THE HOMEOWNERS ASSOCIATION FOR THE PURPOSE OF CONSTRUCTING AND MAINTAINING A SLOPE, WALL AND DRAINAGE FACILITIES. OWNERS OF LOTS MAY NOT IMPEDE ACCESS FOR THE MAINTENANCE OR CONSTRUCTION OF THE SLOPE, WALL, DRAINAGE FACILITIES OR UTILITIES WITHIN THE EASEMENT.



PREPARED BY
FOX LAND SURVEYS, INC.

1515 S. SHOSHONE ST., BOISE ID 83705
208-342-7957 - FAX 208-342-7437