

# FINAL PLAT SHOWING REFLECTION RIDGE SUBDIVISION NO. 1

LOCATED WITHIN A PORTION OF THE N 1/2 OF THE SE 1/4 OF  
SECTION 30, TOWNSHIP 3 NORTH, RANGE 1 EAST, BOISE MERIDIAN  
CITY OF MERIDIAN, ADA COUNTY, IDAHO

2013  
FOX LAND SURVEYS, INC.



SCALE: 1"=50'

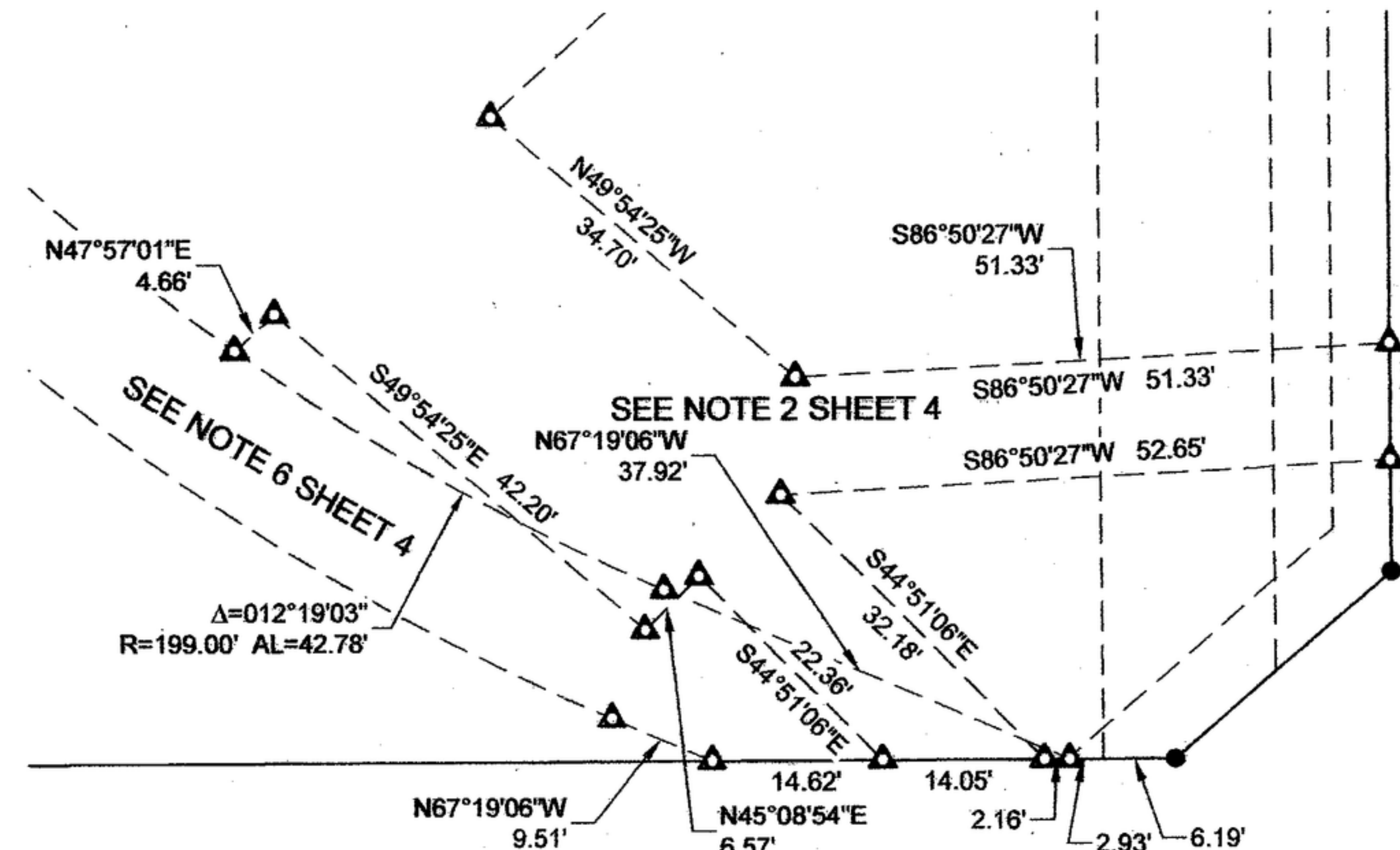
### LEGEND

- BOUNDARY LINE
- SECTION LINE
- 1/4 SECTION LINE
- 1/16 SECTION LINE
- CENTER LINE
- RECORD BOUNDARY LINE
- PUBLIC UTILITY, DRAINAGE & IRRIGATION EASEMENT
- 10 FOOT WIDE PRESSURE IRRIGATION EASEMENT (SEE NOTE 8 ON SHEET 1)
- TIE LINE
- FOUND BRASS CAP
- FOUND 5/8" REBAR WITH CAP STAMPED "FLSI PLS 7612"
- SET 5/8" REBAR WITH PLASTIC CAP STAMPED "FLSI PLS 7612"
- SET 1/2" REBAR WITH PLASTIC CAP STAMPED "FLSI PLS 7612"
- SET 1" COPPER CAP WITH MAGNETIC INSERT "FLSI PLS 7612"
- CALCULATED POINT, NOTHING FOUND, NOTHING SET
- WITNESS CORNER, DISTANCE AS NOTED
- SLOPE, WALL, DRAINAGE & UTILITY EASEMENT ON SHEETS 2 & 3, SEE EASEMENT NOTE ON PAGES 2 & 3.

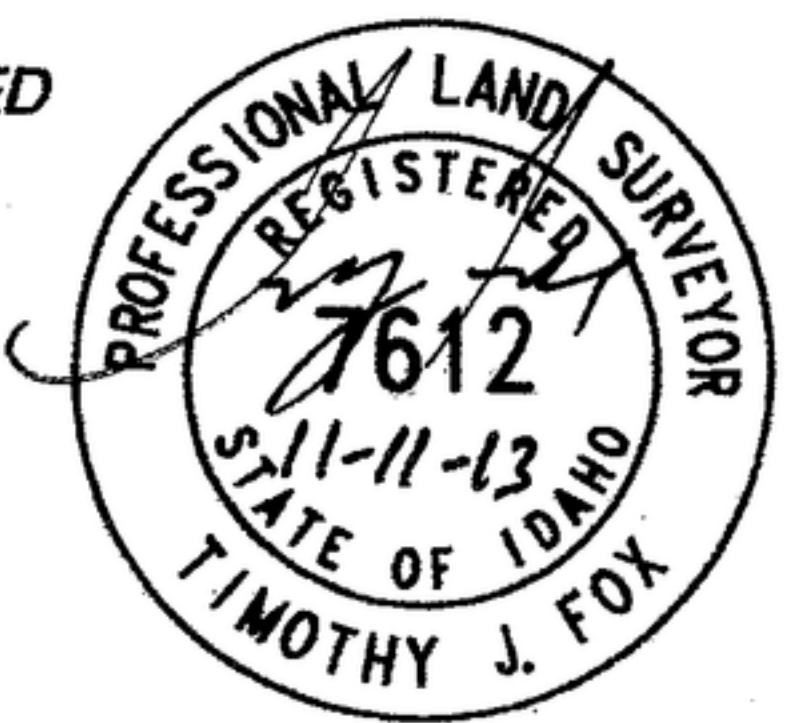
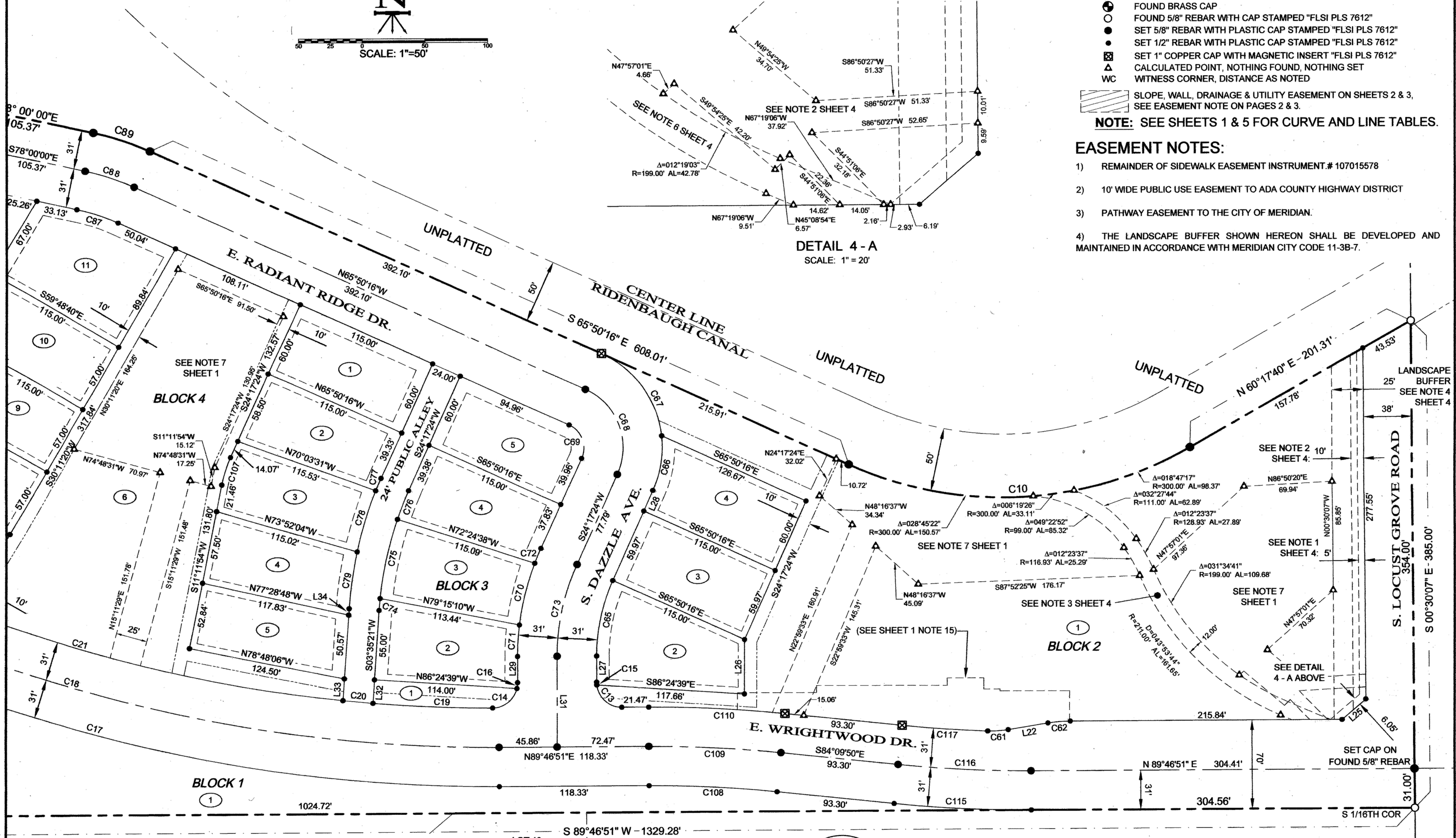
**NOTE:** SEE SHEETS 1 & 5 FOR CURVE AND LINE TABLES.

### EASEMENT NOTES:

- 1) REMAINDER OF SIDEWALK EASEMENT INSTRUMENT # 107015578
- 2) 10' WIDE PUBLIC USE EASEMENT TO ADA COUNTY HIGHWAY DISTRICT
- 3) PATHWAY EASEMENT TO THE CITY OF MERIDIAN.
- 4) THE LANDSCAPE BUFFER SHOWN HEREON SHALL BE DEVELOPED AND MAINTAINED IN ACCORDANCE WITH MERIDIAN CITY CODE 11-3B-7.



DETAIL 4 - A  
SCALE: 1" = 20'



PREPARED BY  
**FOX LAND SURVEYS, INC.**  
1515 S. SHOSHONE ST., BOISE ID 83705  
208-342-7957 - FAX 208-342-7437