

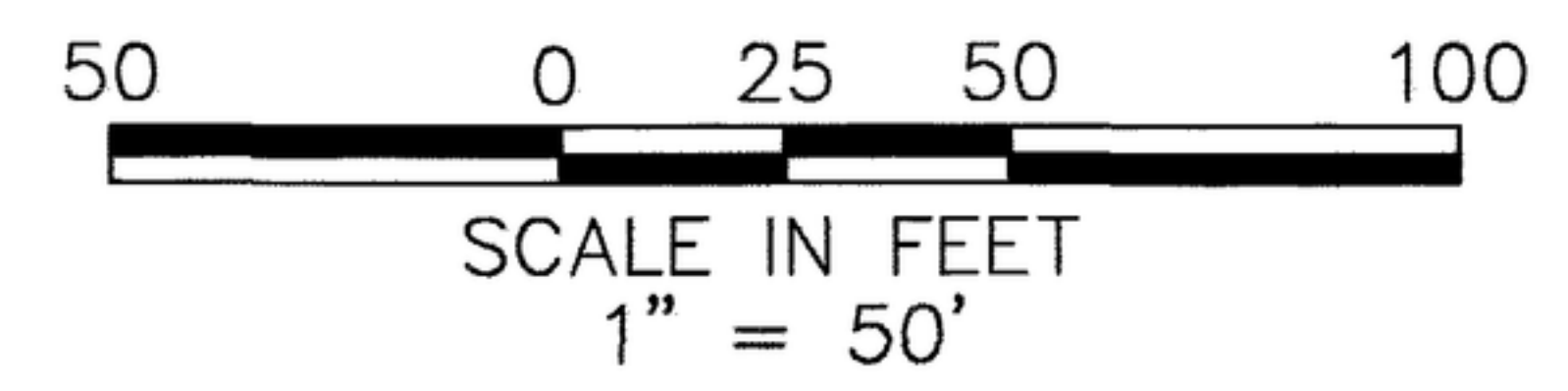
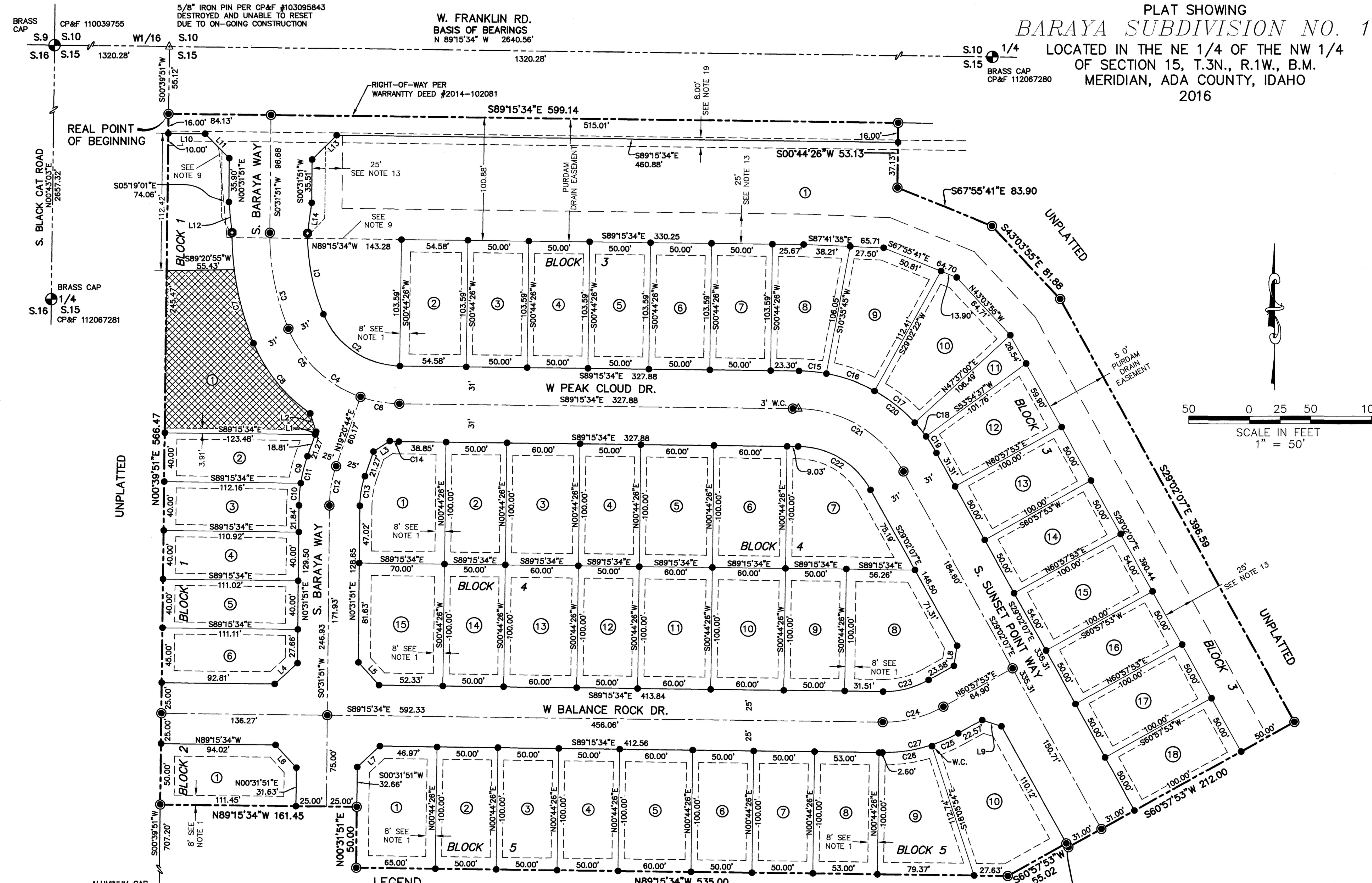
PK 111 PG 15116

PLAT SHOWING BARAYA SUBDIVISION NO. 1 LOCATED IN THE NE 1/4 OF THE NW 1/4 OF SECTION 15, T.3N., R.1W., B.M. MERIDIAN, ADA COUNTY, IDAHO 2016

BRASS CAP
S.9 S.10
S.16 S.15
W1/16 S.10
S.15
S.16 S.15
CP&F 110039755
CP&F 112067281

5/8" IRON PIN PER CP&F #103095843
DESTROYED AND UNABLE TO RESET
DUE TO ON-GOING CONSTRUCTION

W. FRANKLIN RD.
BASIS OF BEARINGS
N 89°15'34" W 2640.56'



- LEGEND**
- SUBDIVISION BOUNDARY
 - SECTION LINE
 - - - EASEMENT LINE (SEE NOTES 1 & 9)
 - - - ACHD SIDEWALK EASEMENT (SEE NOTE 12)
 - - - EXISTING EASEMENT LINE (AS NOTED)
 - STREET CENTERLINE
 - LOT LINE
 - ACHD storm drain easement
See Note 2 and Note 3.
 - W.C. WITNESS CORNER

- ⑥ LOT NUMBER
- SET 1/2" x 24" IRON PIN WITH PLASTIC CAP, PLS 7729
- ⊕ FOUND BRASS MONUMENT
- SET 5/8" x 24" IRON PIN WITH PLASTIC CAP, PLS 7729
- △ CALCULATED POINT
- SET 1" MAGNETICALLY DETECTABLE COPPER DISK MONUMENT



GREGORY G CARTER, PLS 7729
IDAHO SURVEY GROUP
1450 E. WATERTOWER STREET, STE. 130
MERIDIAN, ID 83642

SEE SHEET 2 OF 4
FOR NOTES AND LINE
AND CURVE TABLES

Bailey Engineering, Inc.
CIVIL ENGINEERING | PLANNING | CADD
4242 N. BROOKSIDE LN
BOISE, ID 83714
TEL 208-938-0013
www.baileyengineers.com