

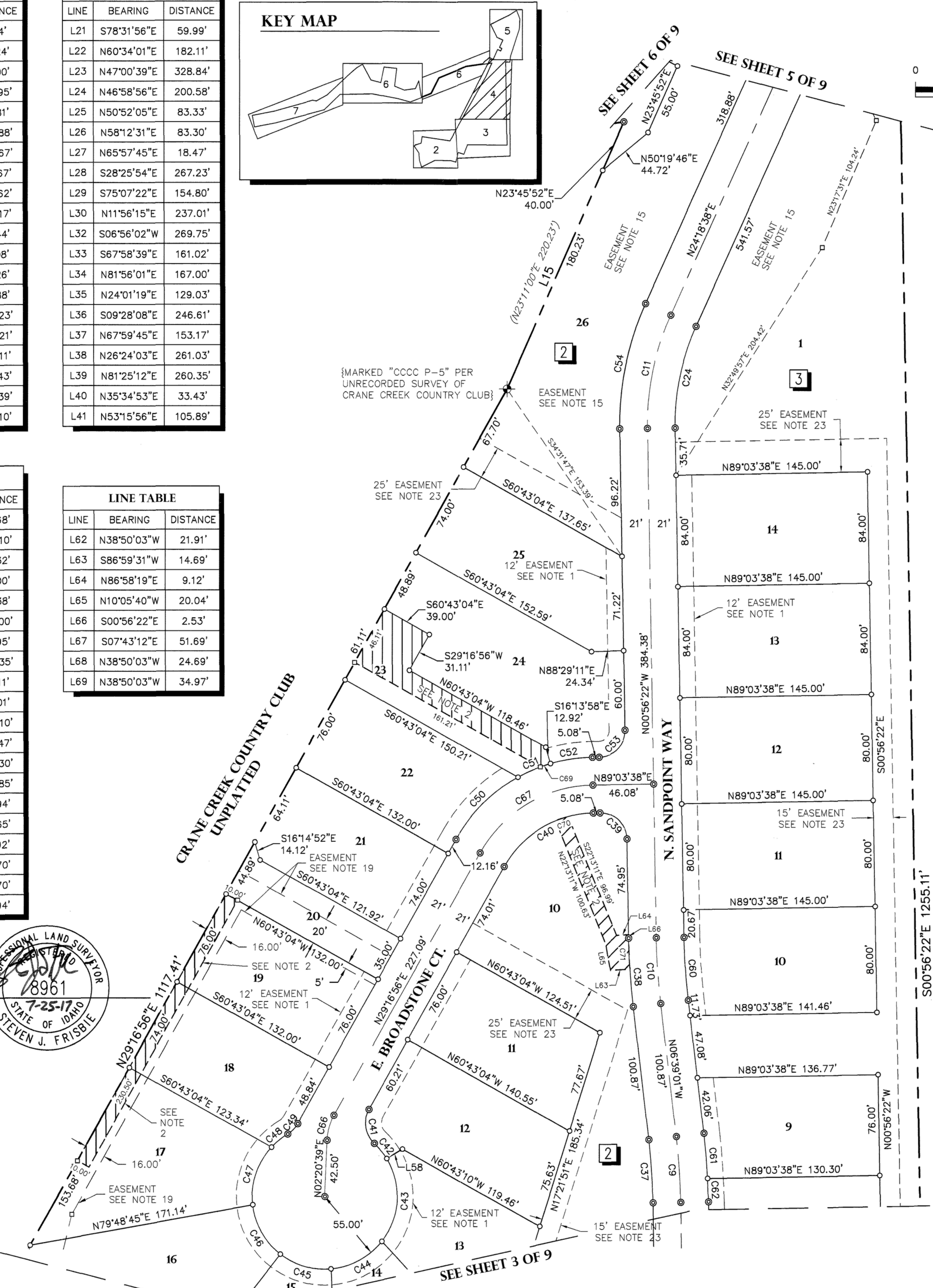
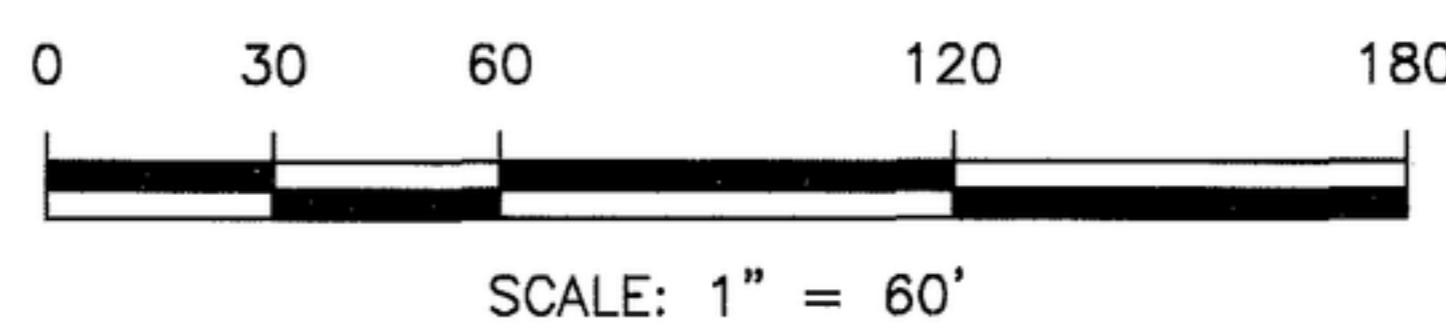
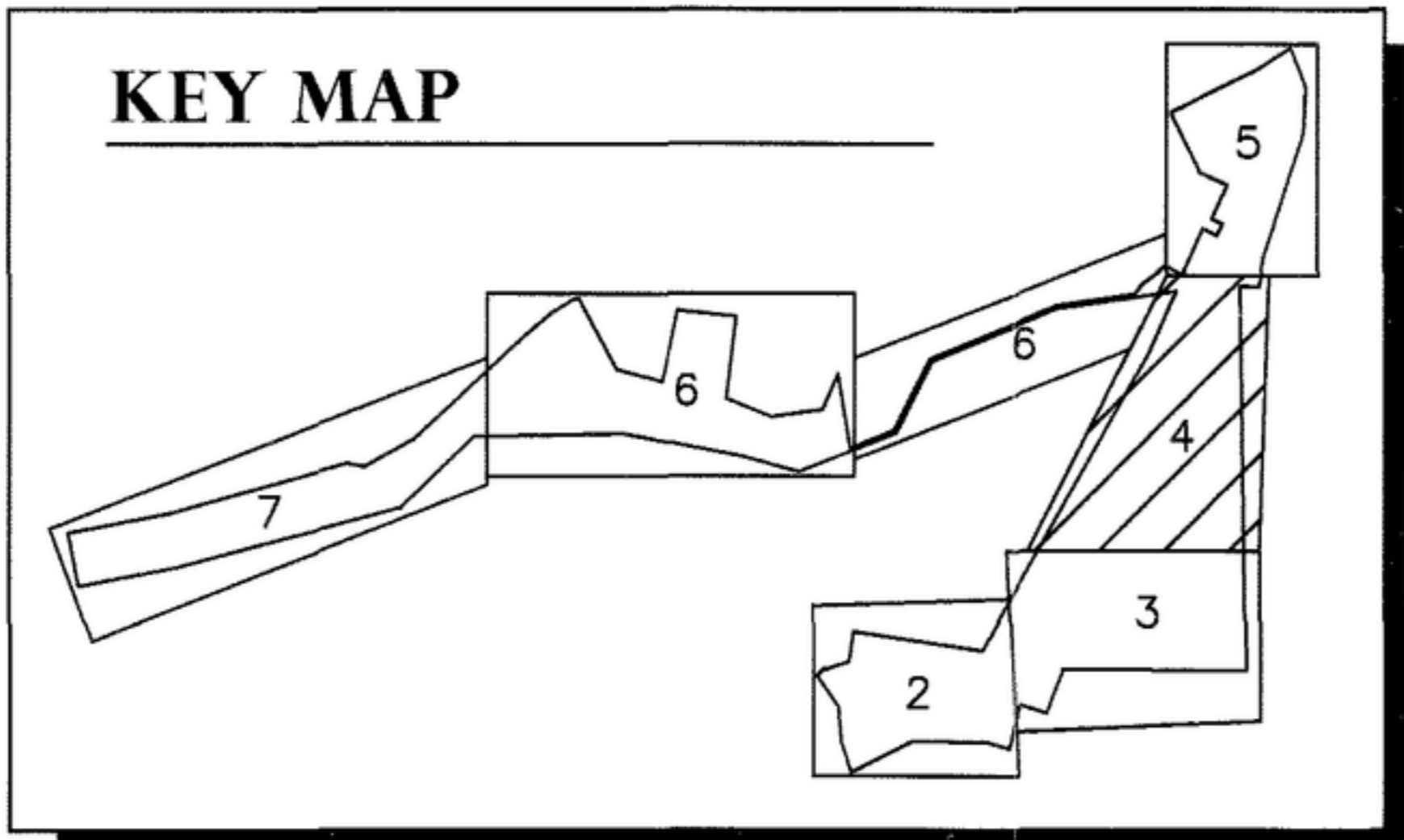
HIGHLANDS COVE SUBDIVISION NO. 1

| LINE | BEARING | DISTANCE |
|------|-------------|----------|
| L1 | S61°31'40"E | 3.84' |
| L2 | S21°57'54"W | 90.24' |
| L3 | S18°46'42"W | 60.00' |
| L4 | S13°03'16"W | 144.95' |
| L5 | N74°25'49"W | 79.81' |
| L6 | N89°24'06"W | 240.88' |
| L7 | S62°34'00"W | 226.67' |
| L8 | N17°23'40"W | 115.67' |
| L9 | N03°48'03"W | 105.62' |
| L10 | N35°15'56"W | 126.17' |
| L11 | N44°34'04"E | 30.44' |
| L12 | S89°51'33"E | 13.08' |
| L13 | N71°47'54"E | 75.26' |
| L14 | N08°23'59"E | 99.88' |
| L15 | N23°45'52"E | 220.23' |
| L16 | S81°25'12"W | 394.21' |
| L17 | S26°24'03"W | 261.11' |
| L18 | N74°23'02"W | 191.43' |
| L19 | S45°30'04"W | 331.39' |
| L20 | N10°55'29"W | 178.10' |

| LINE | BEARING | DISTANCE |
|------|-------------|----------|
| L21 | S78°31'56"E | 59.99' |
| L22 | N60°34'01"E | 182.11' |
| L23 | N47°00'39"E | 328.84' |
| L24 | N46°58'56"E | 200.58' |
| L25 | N50°52'05"E | 83.33' |
| L26 | N58°12'31"E | 83.30' |
| L27 | N65°57'45"E | 18.47' |
| L28 | S28°25'54"E | 267.23' |
| L29 | S75°07'22"E | 154.80' |
| L30 | N11°56'15"E | 237.01' |
| L32 | S06°56'02"W | 269.75' |
| L33 | S67°58'39"E | 161.02' |
| L34 | N81°56'01"E | 167.00' |
| L35 | N24°01'19"E | 129.03' |
| L36 | S09°28'08"E | 246.61' |
| L37 | N67°59'45"E | 153.17' |
| L38 | N26°24'03"E | 261.03' |
| L39 | N81°25'12"E | 260.35' |
| L40 | N35°34'53"E | 33.43' |
| L41 | N53°15'56"E | 105.89' |

| LINE | BEARING | DISTANCE |
|------|-------------|----------|
| L42 | S61°56'34"E | 60.68' |
| L43 | N23°45'52"E | 165.10' |
| L44 | S65°41'22"E | 52.32' |
| L45 | N24°18'38"E | 42.00' |
| L46 | N65°41'22"W | 37.38' |
| L47 | N24°18'38"E | 120.00' |
| L48 | N65°41'22"W | 93.95' |
| L49 | N26°46'55"W | 222.35' |
| L50 | N63°13'05"E | 26.11' |
| L51 | N65°57'20"E | 20.01' |
| L52 | N63°28'08"E | 270.10' |
| L53 | N57°23'51"E | 131.47' |
| L54 | S21°48'56"E | 138.30' |
| L55 | S03°28'06"W | 149.85' |
| L56 | S09°26'12"W | 96.94' |
| L57 | N87°52'52"W | 62.65' |
| L58 | S58°44'52"W | 13.92' |
| L59 | S20°41'22"E | 29.70' |
| L60 | S69°18'38"W | 29.70' |
| L61 | N35°34'53"E | 13.94' |

| LINE | BEARING | DISTANCE |
|------|-------------|----------|
| L62 | N38°50'03"W | 21.91' |
| L63 | S86°59'31"W | 14.69' |
| L64 | N86°58'19"E | 9.12' |
| L65 | N10°05'40"W | 20.04' |
| L66 | S00°56'22"E | 2.53' |
| L67 | S07°43'12"E | 51.69' |
| L68 | N38°50'03"W | 24.69' |
| L69 | N38°50'03"W | 34.97' |



| CURVE | RADIUS | LENGTH | DELTA | BEARING | CHORD |
|-------|---------|---------|-----------|-------------|---------|
| C1 | 972.78' | 93.15' | 5°29'12" | N74°07'11"W | 93.12' |
| C2 | 120.00' | 195.07' | 93°08'28" | N37°55'03"E | 174.29' |
| C3 | 800.00' | 105.47' | 7°33'13" | N80°42'41"E | 105.39' |
| C4 | 200.00' | 98.22' | 28°08'13" | S88°59'49"E | 97.23' |
| C5 | 389.16' | 294.47' | 43°21'17" | N73°46'47"E | 287.49' |
| C6 | 400.00' | 275.96' | 39°31'43" | N75°41'34"E | 270.52' |
| C7 | 200.00' | 67.76' | 19°24'44" | N65°38'04"E | 67.44' |
| C8 | 100.00' | 133.13' | 76°16'49" | N37°12'02"E | 123.52' |
| C9 | 500.00' | 49.83' | 5°42'38" | N3°47'42"W | 49.81' |
| C10 | 500.00' | 49.83' | 5°42'38" | N3°47'42"W | 49.81' |
| C11 | 200.00' | 88.14' | 25°15'01" | N11°41'08"E | 87.43' |
| C12 | 200.00' | 50.08' | 14°20'48" | N17°08'14"E | 49.95' |
| C13 | 300.00' | 187.46' | 35°48'05" | N7°56'12"W | 184.42' |
| C14 | 95.00' | 154.43' | 93°08'28" | N37°55'03"E | 137.98' |
| C15 | 825.00' | 108.76' | 7°33'13" | N80°42'41"E | 108.69' |
| C16 | 175.00' | 85.94' | 28°08'13" | S88°59'49"E | 85.08' |
| C17 | 81.52' | 35.16' | 24°42'43" | N73°48'49"E | 34.89' |
| C18 | 116.50' | 41.08' | 20°12'10" | N74°07'41"E | 40.87' |
| C19 | 360.00' | 218.39' | 34°45'29" | N81°26'32"E | 215.06' |
| C20 | 106.50' | 53.81' | 28°56'49" | N84°20'52"E | 53.24' |

| CURVE | RADIUS | LENGTH | DELTA | BEARING | CHORD |
|-------|---------|---------|-----------|-------------|---------|
| C21 | 103.50' | 40.55' | 22°27'00" | N81°05'57"E | 40.29' |
| C22 | 416.25' | 267.54' | 36°49'33" | N74°07'34"E | 262.96' |
| C23 | 179.00' | 60.65' | 19°24'44" | N65°38'04"E | 60.36' |
| C24 | 179.00' | 78.89' | 25°15'01" | N11°41'08"E | 78.25' |
| C25 | 221.00' | 55.34' | 14°20'48" | N17°08'14"E | 55.19' |
| C26 | 321.00' | 45.14' | 8°03'23" | N5°56'09"E | 45.10' |
| C27 | 225.00' | 110.49' | 28°08'13" | N88°59'49"W | 109.39' |
| C28 | 775.00' | 102.17' | 7°33'13" | S80°42'41"W | 102.10' |
| C29 | 145.00' | 235.71' | 93°08'28" | S37°55'03"W | 210.60' |
| C30 | 410.16' | 310.36' | 43°21'16" | S73°46'47"W | 303.01' |
| C31 | 379.00' | 125.26' | 18°56'13" | S85°59'18"W | 124.70' |
| C32 | 379.00' | 136.21' | 20°33'29" | S66°13'27"W | 135.48' |
| C33 | 221.00' | 56.40' | 14°37'23" | S63°14'24"W | 56.25' |
| C34 | 221.00' | 18.47' | 4°47'21" | S72°56'46"W | 18.47' |
| C35 | 79.00' | 29.26' | 21°13'27" | S64°43'43"W | 29.10' |
| C36 | 79.00' | 75.91' | 55°03'22" | S26°35'19"W | 73.03' |
| C37 | 479.00' | 47.74' | 5°42'38" | S3°47'42"E | 47.72' |
| C38 | 521.00' | 51.93' | 5°42'38" | S3°47'42"E | 51.91' |
| C39 | 20.00' | 31.42' | 90°00'00" | S45°56'22"E | 28.28' |
| C40 | 79.00' | 82.42' | 59°46'41" | N59°10'17"E | 78.73' |

| CURVE | RADIUS | LENGTH | DELTA | BEARING | CHORD |
|-------|---------|---------|-----------|-------------|---------|
| C41 | 21.00' | 27.91' | 76°09'16" | N8°47'42"W | 25.90' |
| C42 | 55.00' | 14.99' | 15°37'12" | N39°03'44"W | 14.95' |
| C43 | 55.00' | 66.57' | 69°20'56" | N3°25'20"E | 62.58' |
| C44 | 55.00' | 45.08' | 46°58'00" | N61°34'48"E | 43.83' |
| C45 | 55.00' | 40.97' | 42°40'49" | S73°35'48"E | 40.03' |
| C46 | 55.00' | 44.07' | 45°54'19" | S29°18'14"E | 42.90' |
| C47 | 55.00' | 47.18' | 49°08'55" | S18°33'23"W | 45.75' |
| C48 | 55.00' | 15.83' | 16°29'33" | S51°02'37"W | 15.78' |
| C49 | 21.00' | 11.00' | 30°00'27" | S44°17'10"W | 10.87' |
| C50 | 121.00' | 67.25' | 31°50'40" | S45°12'16"W | 66.39' |
| C51 | 121.00' | 26.69' | 12°38'26" | S67°26'49"W | 26.64' |
| C52 | 121.00' | 32.30' | 15°17'35" | S81°24'50"W | 32.20' |
| C53 | 20.00' | 31.42' | 90°00'00" | S44°03'38"W | 28.28' |
| C54 | 221.00' | 97.39' | 25°15'01" | S11°41'08"W | 96.61' |
| C55 | 179.00' | 44.82' | 14°20'48" | S17°08'14"W | 44.70' |
| C56 | 279.00' | 72.73' | 14°56'06" | S2°29'47"W | 72.52' |
| C57 | 279.00' | 101.61' | 20°52'00" | S15°24'15"E | 101.05' |
| C58 | 321.00' | 62.21' | 11°06'14" | N20°17'08"W | 62.11' |
| C59 | 321.00' | 93.23' | 16°38'29" | N6°24'47"W | 92.91' |
| C60 | 479.00' | 47.74' | 5°42'38" | N3°47'42"W | 47.72' |

| CURVE | RADIUS | LENGTH | DELTA | BEARING | CHORD |
|-------|----------|---------|-----------|-------------|---------|
| C61 | 521.00' | 34.23' | 3°45'51" | N4°46'05"W | 34.22' |
| C62 | 521.00' | 17.70' | 1°56'48" | N1°54'46"W | 17.70' |
| C63 | 121.00' | 50.18' | 23°45'47" | N10°56'31"E | 49.83' |
| C64 | 121.00' | 56.83' | 26°54'33" | N36°16'41"E | 56.31' |
| C65 | 121.00' | 54.08' | 25°36'29" | N62°32'12"E | 53.63' |
| C66 | 42.00' | 19.75' | 26°56'17" | N15°48'48"E | 19.57' |
| C67 | 100.00' | 104.33' | 59°46'41" | N59°10'17"E | 99.66' |
| C68 | 145.00' | 66.79' | 26°23'33" | S71°17'31"W | 66.20' |
| C69 | 121.00' | 8.08' | 3°49'26" | N71°51'19"E | 8.07' |
| C70 | 79.00' | 10.03' | 7°16'17" | N71°19'52"E | 10.02' |
| C71 | 521.00' | 23.51' | 2°35'10" | S21°33'57"E | 23.51' |
| C72 | 118.04' | 30.22' | 14°40'09" | N76°47'02"E | 30.14' |
| C73 | 145.00' | 31.62' | 12°29'38" | S33°05'59"W | 31.56' |
| C74 | 145.00' | 47.45' | 18°44'56" | S48°43'16"W | 47.24' |
| C75 | 145.00' | 89.86' | 35°30'21" | S9°06'00"W | 88.42' |
| C76 | 379.00' | 50.45' | 7°37'35" | N72°42'24"E | 50.41' |
| C77 | 1000.00' | 192.27' | 11°00'59" | S84°00'57"E | 191.97' |



STEVEN J. FRISBIE
IDAHO NO. 8961



2471 S. TITANIUM PLACE
MERIDIAN, IDAHO 83642-6703
PHONE: (208) 323-2288 FAX: (208) 323-2399