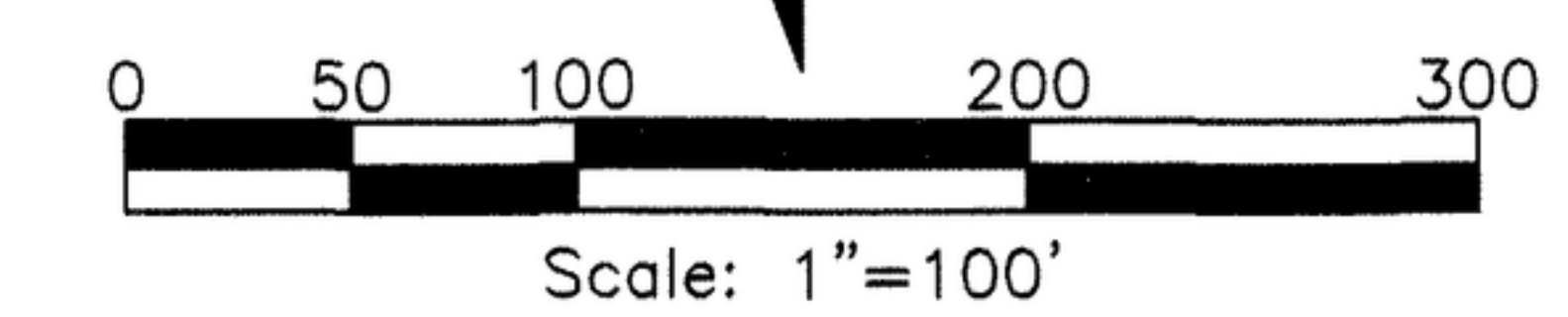


PLAT OF Paramount Director Subdivision No. 1

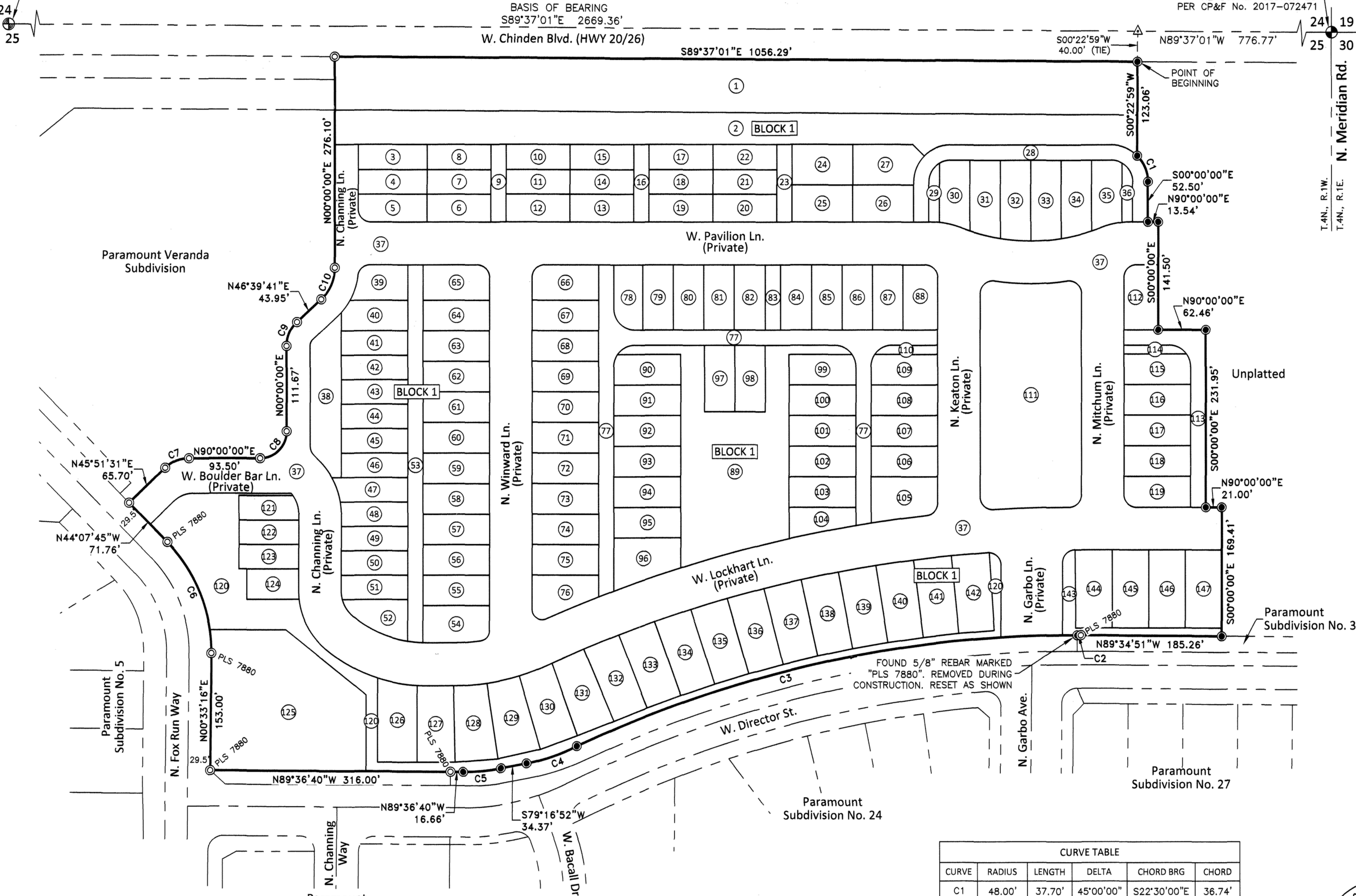
A PORTION OF THE NORTHEAST 1/4 OF SECTION 25,
TOWNSHIP 4 NORTH, RANGE 1 WEST, BOISE MERIDIAN,
CITY OF MERIDIAN, ADA COUNTY, IDAHO.
2018



FOUND ALUMINUM CAP
N 1/4 CORNER SECTION 25
PER CP&F No. 2017-072469

BASIS OF BEARING
S89°37'01"E 2669.36'
W. Chinden Blvd. (HWY 20/26)

POINT OF COMMENCEMENT
FOUND BRASS CAP
NE CORNER SECTION 25
PER CP&F No. 2017-072471



SHEET INDEX

- SHEET 1 - OVERALL SUBDIVISION MAP AND LEGEND
- SHEET 2-4 - DETAIL PLAT MAP
- SHEET 5 - CURVE AND LINE TABLES AND NOTES
- SHEET 6 - CERTIFICATE OF OWNERS
- SHEET 7 - CERTIFICATE AND APPROVALS

REFERENCES

- R1. PLAT OF PARAMOUNT VERANDA SUBDIVISION, BOOK 110 OF PLATS AT PAGES 15815-15817, RECORDS OF ADA COUNTY, IDAHO.
- R2. PLAT OF PARAMOUNT SUBDIVISION No. 33, BOOK 112 OF PLATS AT PAGES 16259-16261, RECORDS OF ADA COUNTY, IDAHO.
- R3. PLAT OF PARAMOUNT SUBDIVISION No. 24, BOOK 107 OF PLATS AT PAGES 14797-14799, RECORDS OF ADA COUNTY, IDAHO.
- R4. PLAT OF PARAMOUNT SUBDIVISION No. 22, BOOK 105 OF PLATS AT PAGES 14312-14314, RECORDS OF ADA COUNTY, IDAHO.
- R5. PLAT OF PARAMOUNT SUBDIVISION No. 5, BOOK 92 OF PLATS AT PAGES 10969-10973, RECORDS OF ADA COUNTY, IDAHO.

LEGEND

- FOUND BRASS CAP
- FOUND ALUMINUM CAP
- FOUND 5/8" REBAR MARKED "PLS 4347" UNLESS NOTED OTHERWISE
- SET 5/8" REBAR WITH PLASTIC CAP MARKED "ALB 12459"
- FOUND 1/2" REBAR MARKED "PLS 4347" UNLESS NOTED OTHERWISE
- SET 1/2" REBAR WITH PLASTIC CAP MARKED "ALB 12459"
- SET BRASS PLUG (WITH MAGNET INSERT) MARKED "ALB PLS 12459"
- 0.50' (UNLESS NOTED OTHERWISE) WITNESS CORNER. SET BRASS PLUG (WITH MAGNET INSERT) MARKED "ALB PLS 12459" (SEE NOTE 21 ON SHEET 5)
- CALCULATED POINT
- LOT NUMBER
- SUBDIVISION BOUNDARY LINE
- LOT LINE
- SECTION LINE
- ROAD CENTERLINE
- ADJACENT LOT LINE
- EASEMENT LINE

CURVE TABLE

CURVE	RADIUS	LENGTH	DELTA	CHORD BRG	CHORD
C1	48.00'	37.70'	45°00'00"	S22°30'00"E	36.74'
C2	1538.50'	4.76'	0°10'38"	N89°40'11"W	4.76'
C3	1538.50'	679.42'	25°18'09"	S77°35'26"W	673.91'
C4	239.34'	70.11'	16°47'02"	S70°53'23"W	69.86'
C5	252.72'	49.75'	11°16'45"	S84°44'57"W	49.67'
C6	206.50'	161.04'	44°41'01"	N21°47'15"W	156.99'
C7	45.00'	34.67'	44°08'29"	N67°55'46"E	33.82'
C8	35.00'	54.98'	90°00'00"	N45°00'00"E	49.50'
C9	43.00'	35.02'	46°39'41"	N23°19'51"E	34.06'
C10	57.00'	46.42'	46°39'41"	N23°19'51"E	45.15'



DEVELOPER
BRIGHTON CORPORATION
BOISE, ID

km
ENGINEERING
ENGINEERS . SURVEYORS . PLANNERS
9233 WEST STATE STREET
BOISE, IDAHO 83714
PHONE (208) 639-6939
FAX (208) 639-6930