

# DRY CREEK RANCH SUBDIVISION NO. 1






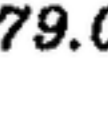



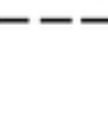


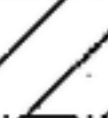


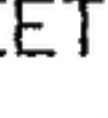
CURVE TABLE					
CURVE	RADIUS	LENGTH	CHORD DIST.	CHORD BRG.	DELTA
C1	299.16	182.80	179.97	S17°08'30"W	35°00'35"
C2	334.00	135.76	134.83	S23°00'07"W	23°17'20"
C3	171.00	137.26	133.60	N50°43'17"W	45°59'23"
C4	9691.10	77.70	77.70	N27°29'49"W	0°27'34"
C5	9691.10	296.59	296.58	N25°54'21"W	1°45'13"
C6	121.00	202.24	179.51	N22°51'16"E	95°46'00"
C7	321.00	33.22	33.20	S63°57'19"E	5°55'44"
C8	321.00	42.35	42.32	S70°41'58"E	7°33'35"
C9	300.00	37.32	37.30	S70°29'01"E	7°07'39"
C10	300.00	31.04	31.03	S63°57'19"E	5°55'44"
C11	300.00	148.32	146.81	N75°09'15"W	28°19'36"
C12	150.00	161.24	153.59	S58°31'20"E	61°35'27"
C13	9670.10	455.30	455.26	S26°22'40"E	2°41'52"
C14	9670.10	118.21	118.21	S27°22'35"E	0°42'02"
C15	9670.10	337.09	337.07	S26°01'39"E	1°59'50"
C16	100.00	201.95	169.34	S32°49'36"W	115°42'41"
C17	100.00	61.10	60.16	N17°08'30"E	35°00'35"
C18	300.00	29.52	29.51	S31°49'40"W	5°38'14"
C19	150.00	88.92	87.62	N72°20'08"W	33°57'51"
C20	100.00	88.34	85.49	S65°22'33"W	50°36'47"
C21	150.00	35.42	35.34	N46°50'04"E	13°31'48"
C22	121.00	42.12	41.91	S80°42'36"W	19°56'42"
C23	79.00	48.27	47.52	N17°08'30"E	35°00'35"
C24	171.00	101.37	99.89	N72°20'07"W	33°57'51"
C25	171.00	66.45	66.03	N66°29'06"W	22°15'49"
C26	171.00	34.92	34.86	N83°28'02"W	11°42'02"
C27	121.00	106.89	103.45	S65°22'33"W	50°36'47"
C28	121.00	71.36	70.33	S73°47'12"W	33°47'29"
C29	121.00	35.52	35.40	S48°28'49"W	16°49'18"

CURVE TABLE					
CURVE	RADIUS	LENGTH	CHORD DIST.	CHORD BRG.	DELTA
C30	129.00	35.77	35.66	N48°00'50"E	15°53'19"
C31	9649.10	291.60	291.59	S25°53'41"E	1°43'53"
C32	9649.10	131.22	131.22	S26°22'15"E	0°46'45"
C33	9649.10	110.00	110.00	S25°39'17"E	0°39'11"
C34	9649.10	50.38	50.38	S25°10'43"E	0°17'57"
C35	79.00	159.54	133.78	S32°49'36"W	115°42'41"
C36	279.00	89.67	89.29	N80°06'35"W	18°24'56"
C37	279.00	48.26	48.20	N65°56'47"W	9°54'41"
C38	279.00	33.82	33.80	S70°23'32"E	6°56'41"
C39	279.00	28.87	28.86	S63°57'19"E	5°55'44"
C40	279.00	27.45	27.44	S31°49'40"W	5°38'14"
C41	121.00	73.94	72.79	N17°08'31"E	35°00'36"
C42	321.00	31.58	31.57	S31°49'40"W	5°38'14"
C43	321.00	158.70	157.09	N75°09'15"W	28°19'36"
C44	321.00	69.98	69.84	N67°14'10"W	12°29'27"
C45	321.00	74.93	74.76	N80°10'07"W	13°22'27"
C46	321.00	13.79	13.79	N88°05'12"W	2°27'43"
C47	129.00	138.67	132.09	S58°31'20"E	61°35'27"
C48	129.00	10.71	10.71	S86°56'21"E	4°45'23"
C49	129.00	127.96	122.78	S56°08'38"E	56°50'04"
C50	9649.10	80.14	80.14	S27°29'19"E	0°28'33"
C51	9649.10	77.41	77.41	S27°29'49"E	0°27'35"
C52	9649.10	2.73	2.73	S27°15'32"E	0°00'58"
C53	171.00	40.38	40.29	N46°50'04"E	13°31'48"
C54	79.00	69.79	67.54	S65°22'33"W	50°36'47"
C55	129.00	76.47	75.35	N72°20'08"W	33°57'51"
C56	279.00	137.94	136.54	N75°09'15"W	28°19'36"
C57	171.00	46.56	46.42	S81°31'01"E	15°36'04"

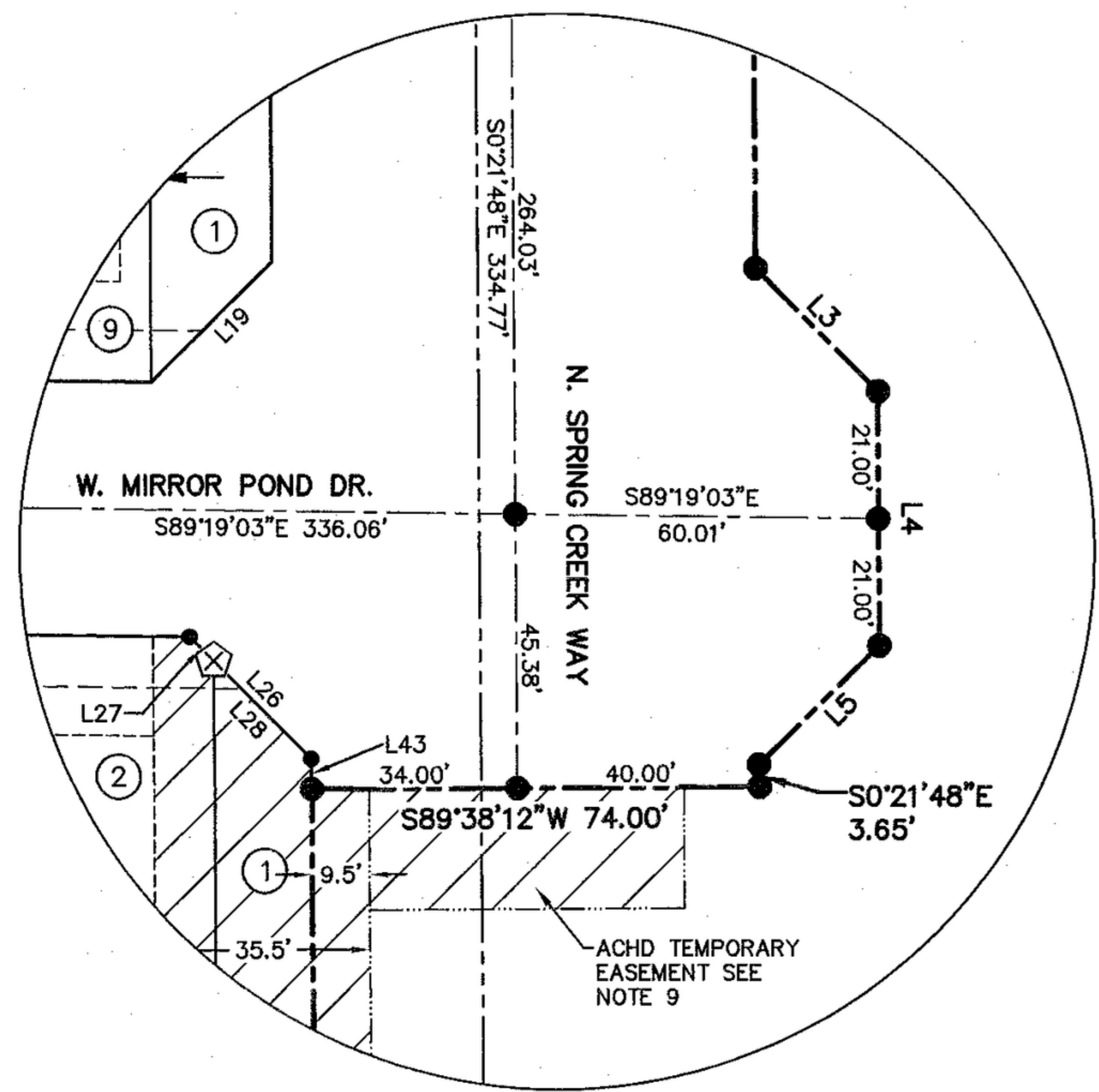
LINE TABLE		
LINE	LENGTH	BEARING
L1	51.88	S6°07'37"W
L2	15.91	S45°42'50"W
L3	28.54	S44°50'42"E
L4	42.01	S0°21'48"E
L5	28.03	S45°09'52"W
L6	28.08	S11°21'27"W
L7	7.26	S11°21'27"W
L8	28.18	S33°50'41"E
L9	2.31	S11°21'27"W
L10	28.48	N71°48'16"W
L11	42.00	N27°01'30"W
L12	28.18	N18°22'44"E
L13	91.51	N62°38'31"W
L14	6.88	S89°19'03"E
L15	28.28	N45°40'57"E
L16	28.09	N44°19'13"W
L17	28.08	N45°40'47"E
L18	28.22	N44°50'35"W
L19	28.02	N45°09'35"E
L20	28.28	N44°19'03"W
L21	28.54	S44°50'25"E
L22	28.28	N79°38'48"E
L23	11.99	S55°21'12"E

LINE TABLE		
LINE	LENGTH	BEARING
L24	25.68	S76°36'37"E
L25	28.02	N45°09'35"E
L26	28.54	S44°50'25"E
L27	5.70	S44°50'25"E
L28	22.84	S44°50'25"E
L29	40.98	S63°35'58"W
L30	27.13	N58°39'26"E
L31	18.03	S58°39'26"W
L32	9.10	S58°39'26"W
L33	37.54	S60°59'27"E
L34	28.28	S15°59'27"E
L35	60.00	N28°12'58"E
L36	12.00	S55°21'12"E
L37	28.28	S10°21'12"E
L38	28.28	N74°00'33"E
L39	30.46	S13°12'14"W
L40	12.17	N53°35'58"E
L41	29.49	S31°20'41"E
L42	26.99	S72°45'54"E
L43	5.00	N0°21'48"W
L44	4.68	N11°21'27"E
L45	4.70	N11°21'27"E

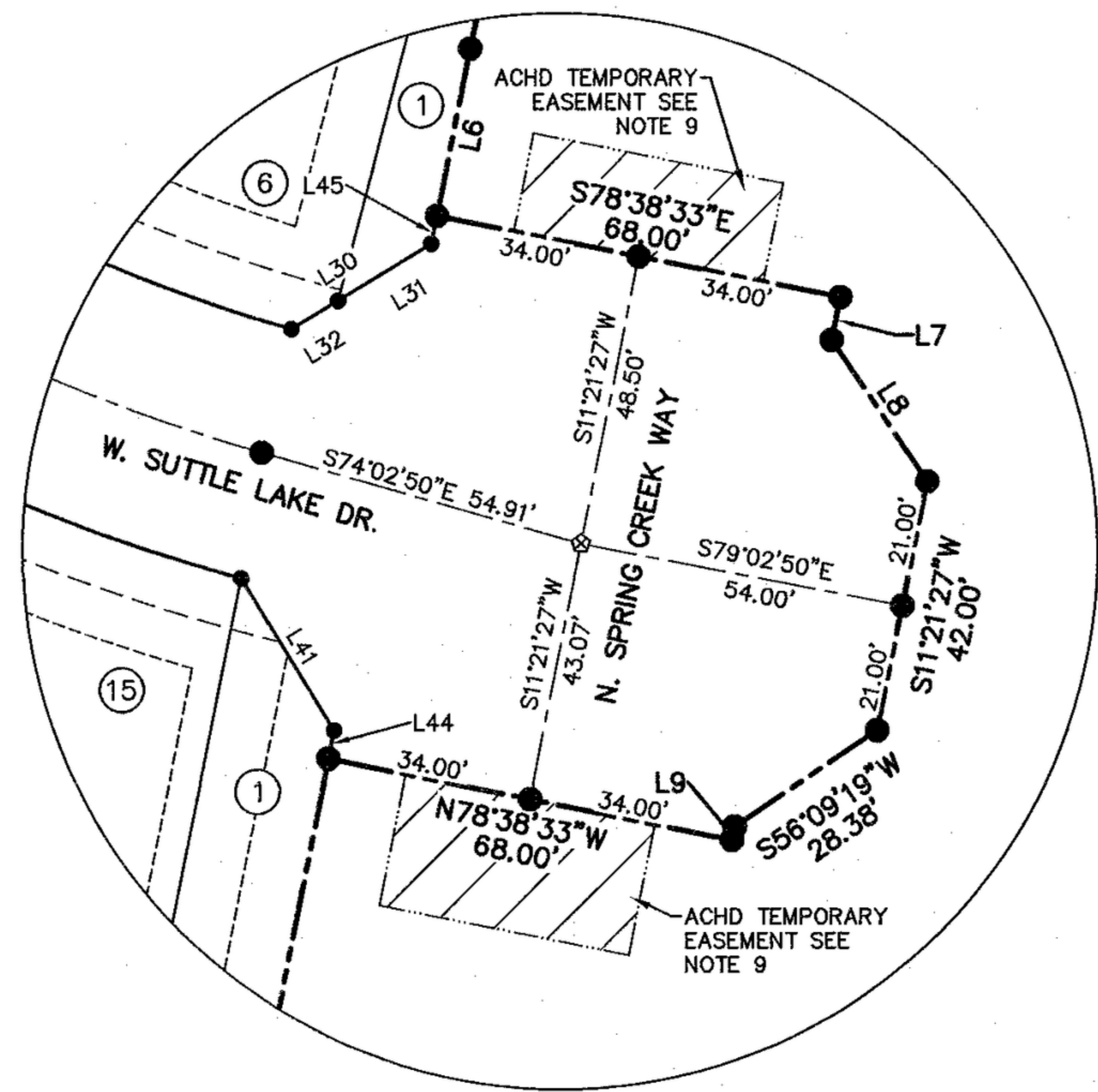
**LEGEND**

-  FOUND BRASS CAP MONUMENT
-  FOUND ALUMINUM CAP MONUMENT
-  SET 1/2 IRON PIN WITH CAP PLS 7729
-  SET 5/8 IRON PIN WITH CAP PLS 7729
-  SET 1" MAGNETICALLY DETECTABLE COPPER DISK MONUMENT PLS 7729
-  CALCULATED POINT
-  EASEMENT LINE DIMENSION
-  SUBDIVISION BOUNDARY LINE
-  LOT LINE
-  SECTION LINE
-  CENTERLINE
-  EASEMENT LINE
-  ACHD PERMANENT EASEMENT INSTR. NO. 2018-051710
-  ACHD STORM DRAIN EASEMENT SEE NOTE 7
-  ACHD TEMPORARY EASEMENT SEE NOTES 8
-  LOT NO.

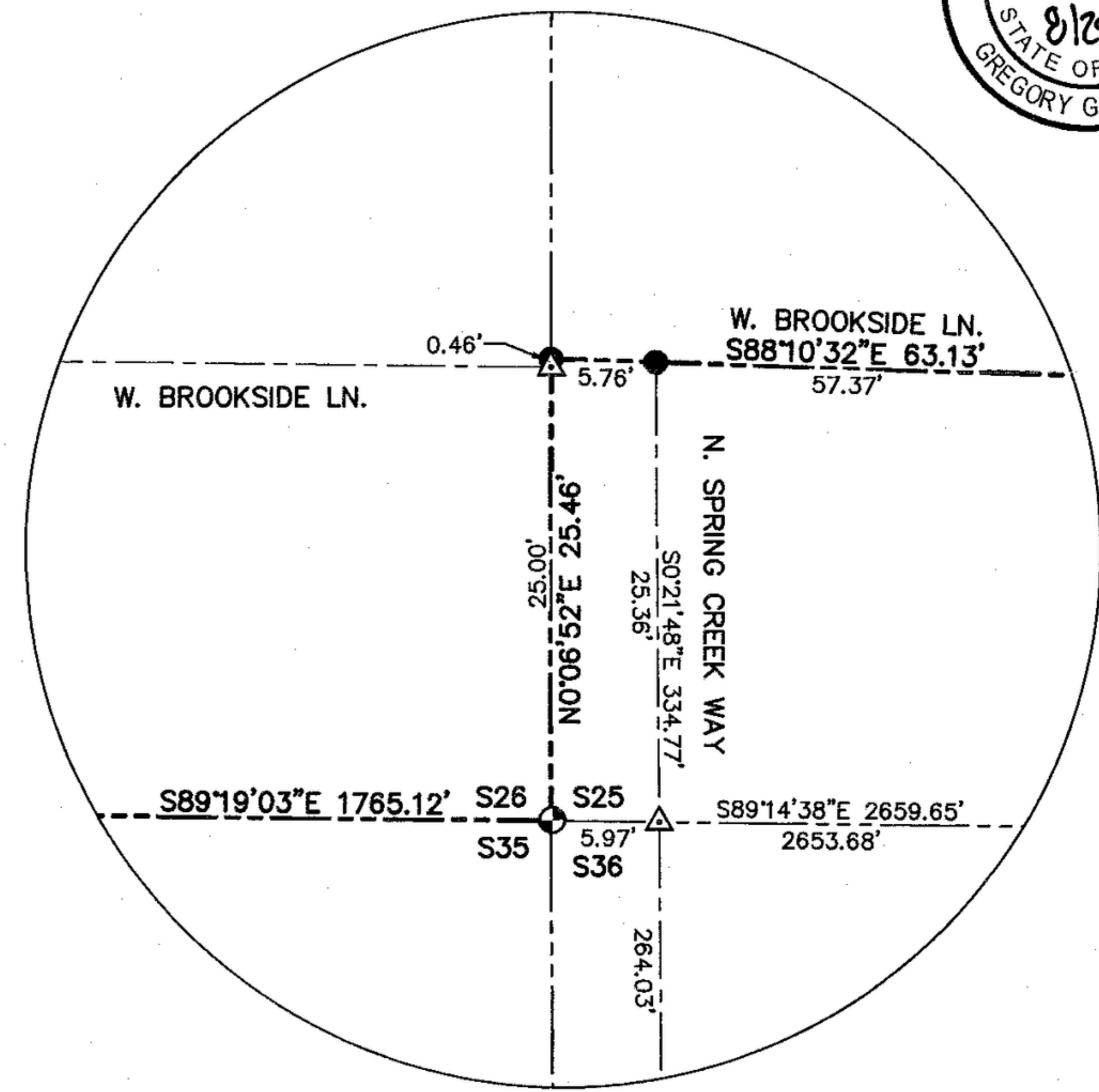
SEE SHEET 6 FOR CURVE AND LINE TABLE DATA  
SEE SHEET 1 FOR NOTES



DETAIL E  
SCALE: 1" = 30'



DETAIL F  
SCALE: 1" = 30'



DETAIL G  
SCALE: 1" = 10'



**ISG** IDAHO SURVEY GROUP, LLC.  
9955 W. EMERALD ST.  
BOISE, IDAHO 83704  
(208) 846-8570