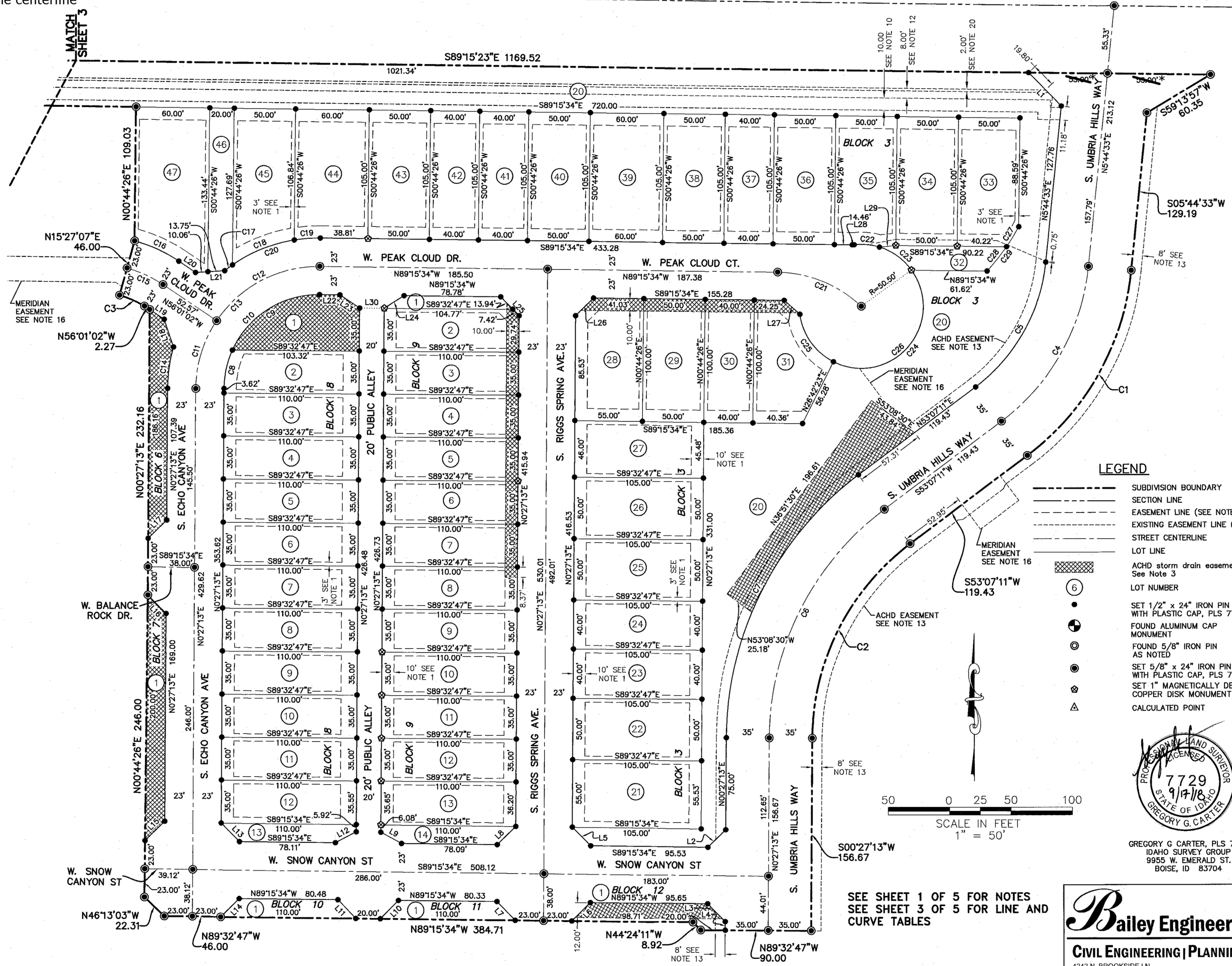


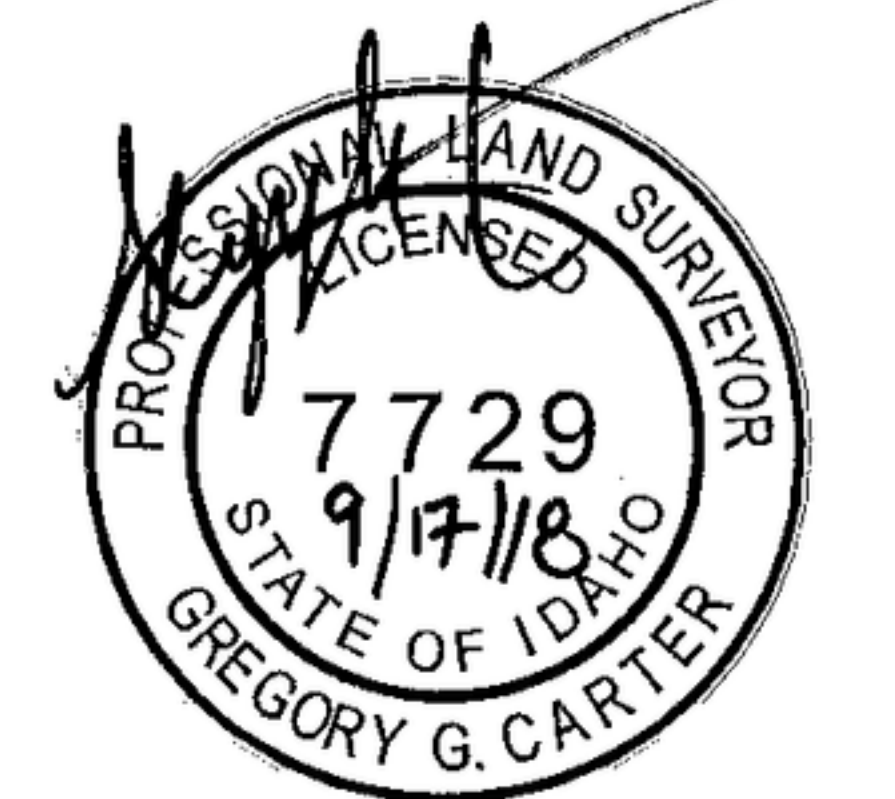
BARAYA SUBDIVISION NO. 2

* 2018093303
The distances for the widths of S Umbria Hills Way should read
64.35' West of the centerline and
83.83' East of the centerline

W. FRANKLIN RD.



- LEGEND**
- SUBDIVISION BOUNDARY
 - SECTION LINE
 - - - EASEMENT LINE (SEE NOTE 1)
 - - - EXISTING EASEMENT LINE (AS NOTED)
 - STREET CENTERLINE
 - LOT LINE
 - ACHD storm drain easement See Note 3
 - LOT NUMBER
 - SET 1/2" x 24" IRON PIN WITH PLASTIC CAP, PLS 7729
 - FOUND ALUMINUM CAP MONUMENT
 - FOUND 5/8" IRON PIN AS NOTED
 - SET 5/8" x 24" IRON PIN WITH PLASTIC CAP, PLS 7729
 - SET 1" MAGNETICALLY DETECTABLE COPPER DISK MONUMENT PLS 7729
 - ▲ CALCULATED POINT



GREGORY G CARTER, PLS 7729
IDAHO SURVEY GROUP
9955 W. EMERALD ST.
BOISE, ID 83704

SEE SHEET 1 OF 5 FOR NOTES
SEE SHEET 3 OF 5 FOR LINE AND
CURVE TABLES

Bailey Engineering, Inc.
CIVIL ENGINEERING | PLANNING | CADD

4242 N. BROOKSIDE LN TEL 208-938-0013
BOISE, ID 83714 www.baileyengineers.com