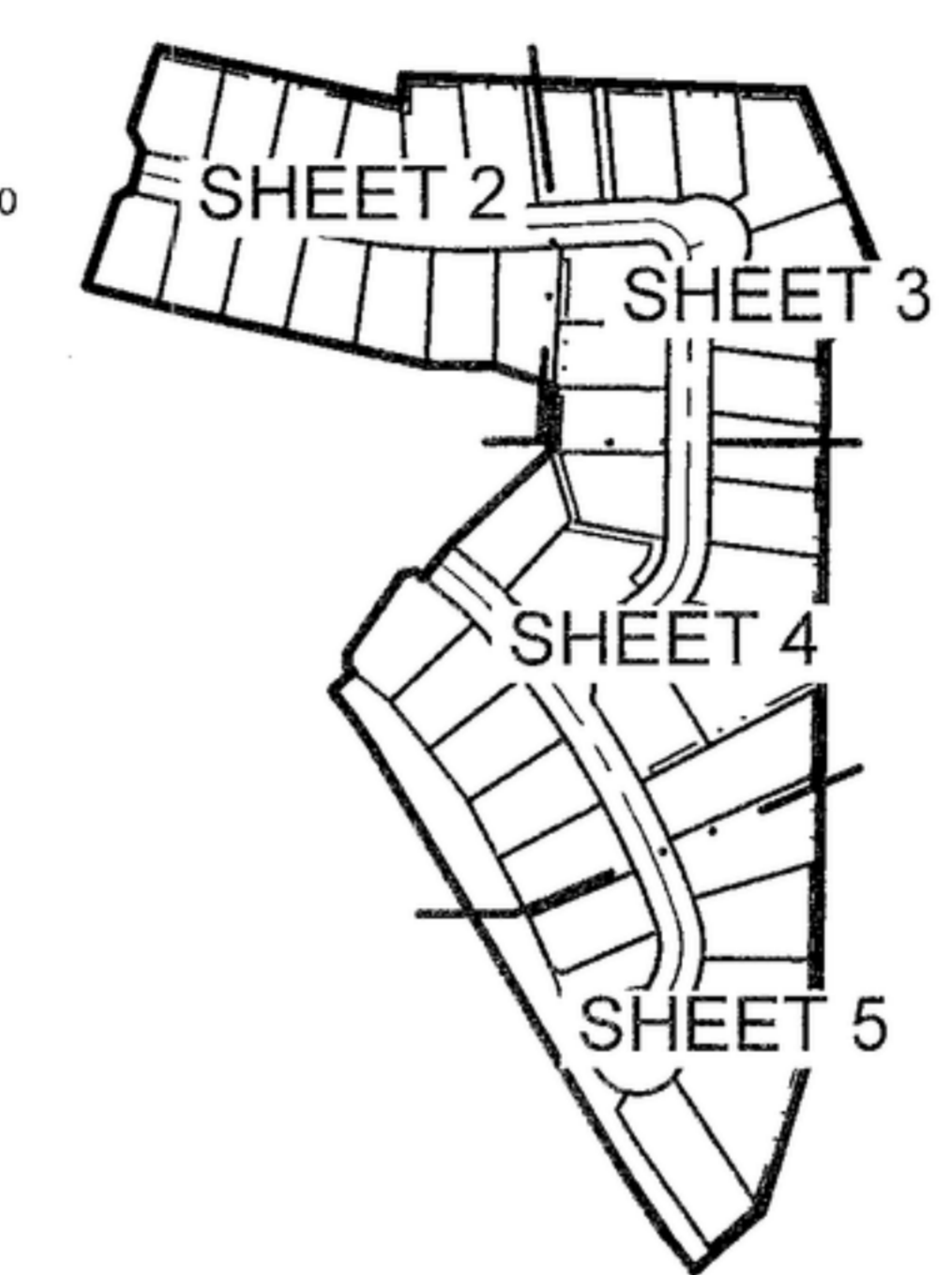
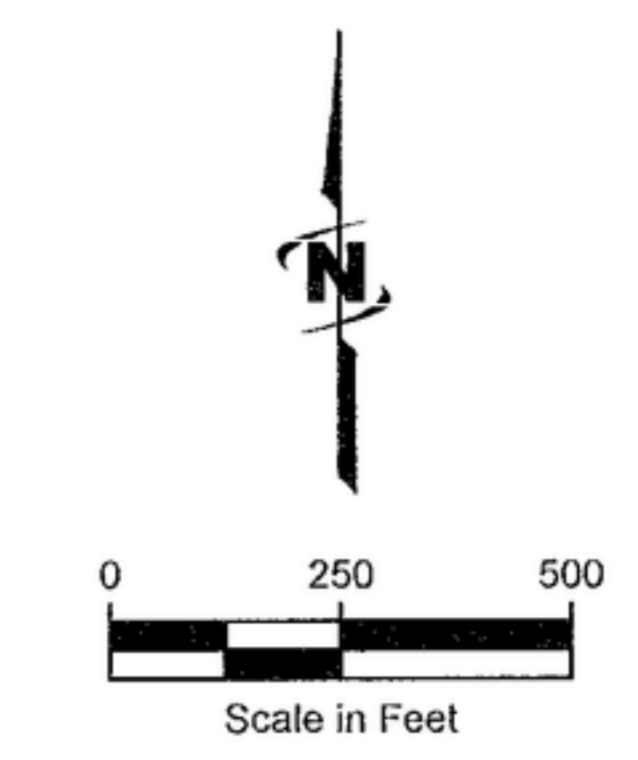
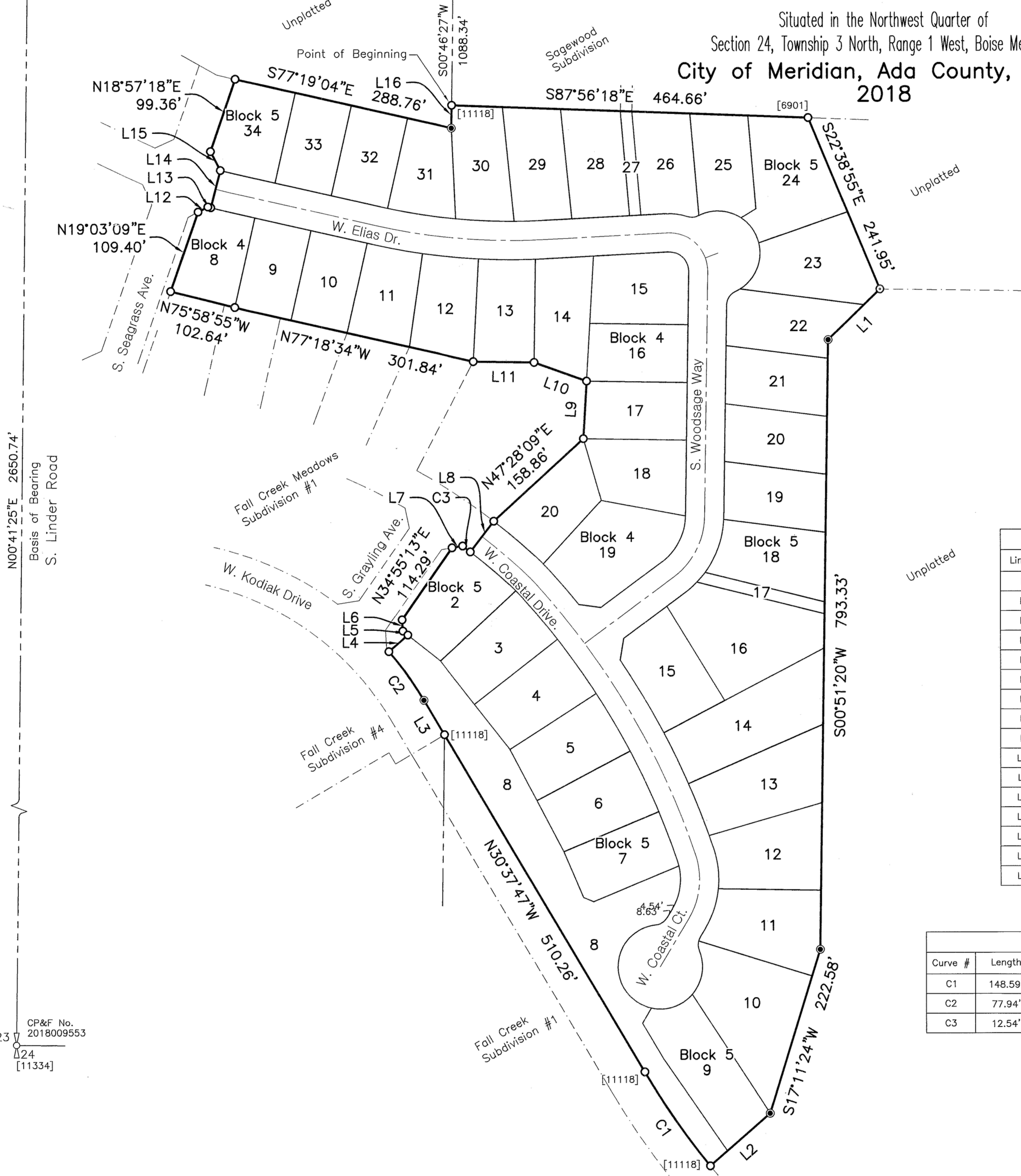
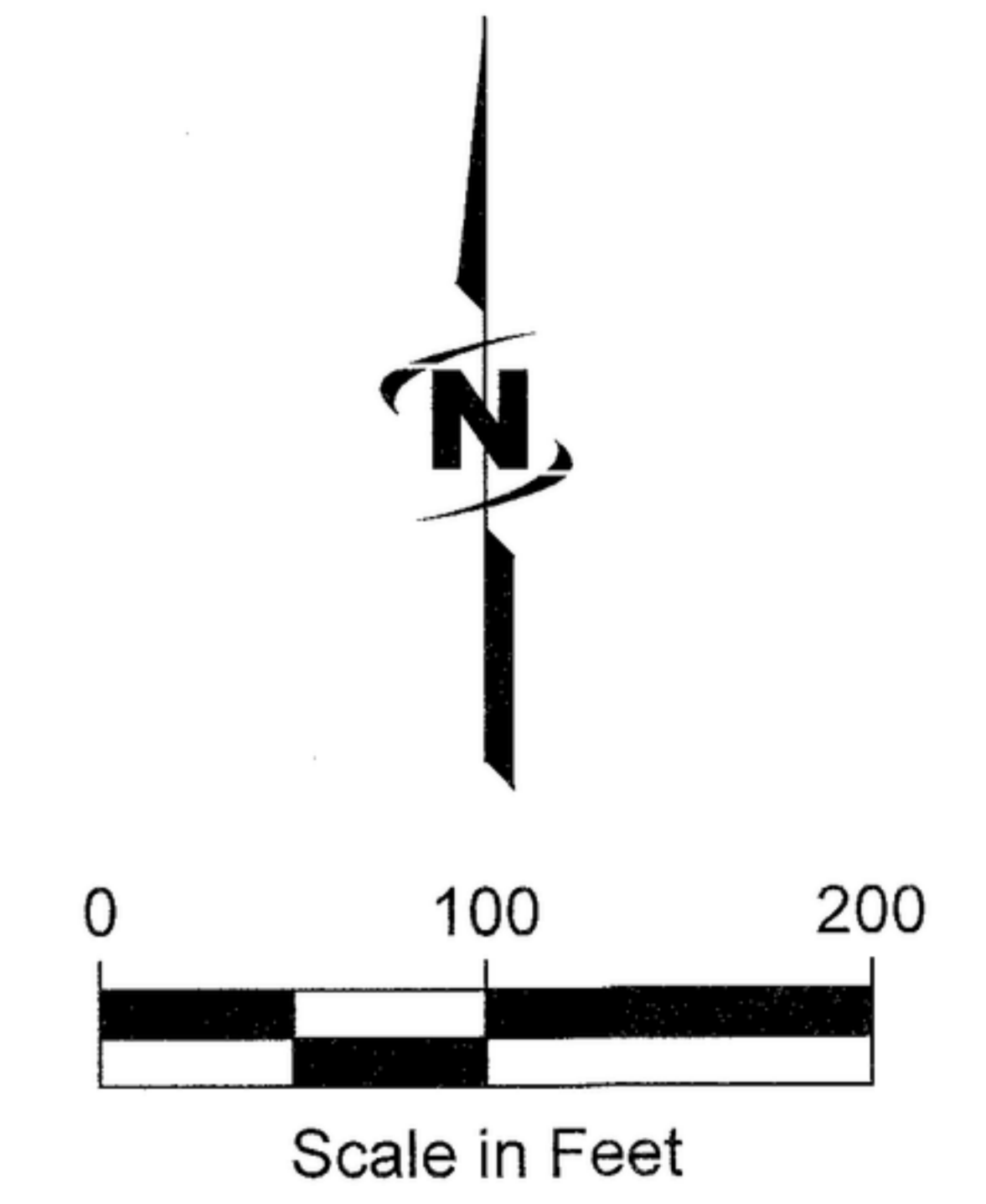


PLAT SHOWING Fall Creek Meadows Subdivision No. 2

Situated in the Northwest Quarter of
Section 24, Township 3 North, Range 1 West, Boise Meridian,
City of Meridian, Ada County, Idaho.
2018



Key Map



Legend

- Subdivision Boundary Line
- Lot Line
- Section Line
- Center Line
- Right-of-way Line
- Adjacent Property Line
- Match Line
- Utility Easement Line
- Sidewalk Easement Line
- ACHD Storm Drain Easement Line
- Utility and Nampa & Meridian Irrigation District Easement Line
- Existing City of Meridian Water Main Easement Line
- Section Corner, Found Brass Cap
- Quarter-Section Corner, Found Alum. Cap
- Found 5/8" Rebar, Plastic Cap Marked "J-U-B 11334", Unless Otherwise Noted
- Found 1/2" Rebar, Plastic Cap Marked "J-U-B 11334", Unless Otherwise Noted
- Set 1/2"x24" Rebar, with Plastic Cap Marked "J-U-B 11334"
- Set 5/8"x24" Rebar, with Plastic Cap Marked "J-U-B 11334"
- Set 1/2"x24" Rebar, with Plastic Cap Marked "EASEMENT JUB 11334"
- Set 1-3/16" Bernt'sen, BP Cap with Magnet Marked "J-U-B 11334"
- Point Not Set or Found
- C# - Curve Number (Typical)
- L# - Course Number (Typical)
- # - Lot Number (Typical)
- [####] - PLS Number Found on Monument
- WC - Witness Corner

Line Table - This Sheet Only

Line #	Direction	Length
L1	S45°51'20"W	94.20'
L2	S49°00'15"W	103.64'
L3	N30°38'10"W	52.24'
L4	N48°54'23"E	32.96'
L5	N51°30'19"W	8.38'
L6	N03°45'28"W	14.58'
L7	N80°27'04"E	14.01'
L8	N37°38'54"E	50.00'
L9	N03°17'51"E	75.07'
L10	N70°22'30"W	72.61'
L11	N89°09'01"W	79.30'
L12	N62°26'53"E	14.51'
L13	S75°15'10"E	3.92'
L14	N14°34'04"E	50.00'
L15	N27°41'30"W	27.52'
L16	N00°46'27"E	29.82'

Curve Table - This Sheet Only

Curve #	Length	Radius	Delta	Chord Bearing	Chord Length
C1	148.59'	970.00'	8°46'37"	N35°01'06"W	148.45'
C2	77.94'	427.00'	10°27'27"	N35°51'54"W	77.83'
C3	12.54'	775.00'	0°55'36"	S52°48'55"E	12.54'

N00°41'25"E 2650.74'
Basis of Bearing
S. Linder Road

CP&F No. 2018009553
24 [11334]

See Sheet 7 for Notes & Easements.

250 South Beechwood Avenue, Suite 201, Boise, ID 83709-0944
p 208 376 7330 f 208 323 9336 w www.jub.com
JUB Project No. 10-17-106

