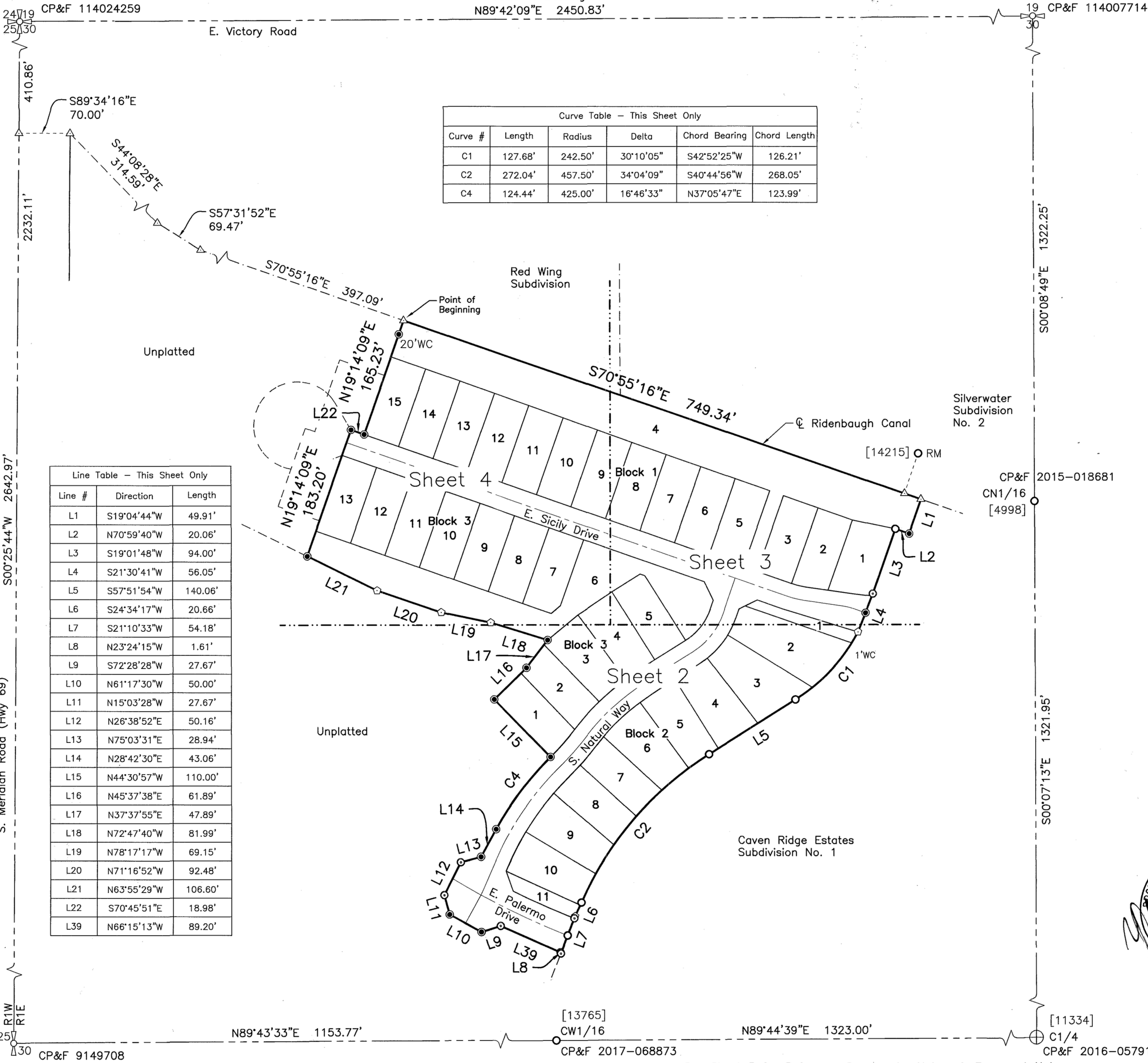
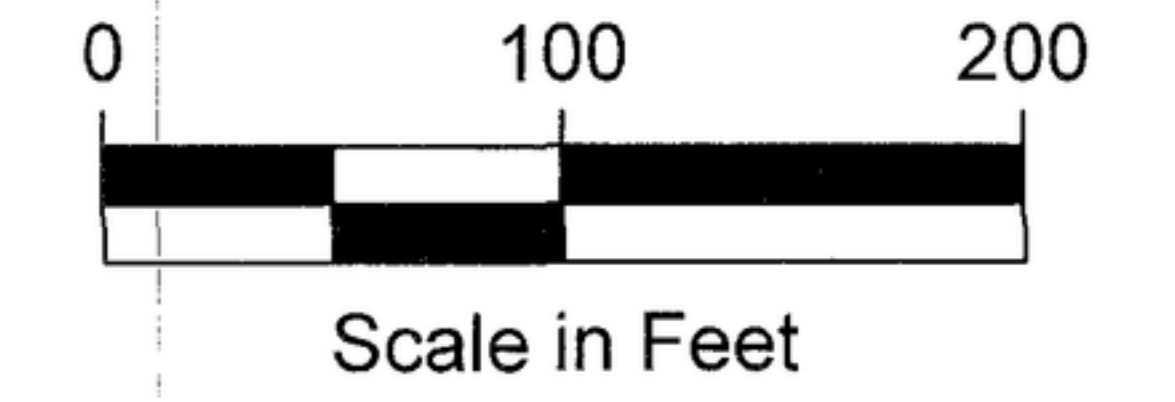


# PLAT SHOWING Caven Ridge Estates West Subdivision No. 1

Situated in the Northwest Quarter of  
Section 30, Township 3 North, Range 1 East, Boise Meridian,  
City of Meridian, Ada County, Idaho.  
2019



Curve Table - This Sheet Only

Curve #	Length	Radius	Delta	Chord Bearing	Chord Length
C1	127.68'	242.50'	30°10'05"	S42°52'25"W	126.21'
C2	272.04'	457.50'	34°04'09"	S40°44'56"W	268.05'
C4	124.44'	425.00'	16°46'33"	N37°05'47"E	123.99'

Line Table - This Sheet Only

Line #	Direction	Length
L1	S19°04'44"W	49.91'
L2	N70°59'40"W	20.06'
L3	S19°01'48"W	94.00'
L4	S21°30'41"W	56.05'
L5	S57°51'54"W	140.06'
L6	S24°34'17"W	20.66'
L7	S21°10'33"W	54.18'
L8	N23°24'15"W	1.61'
L9	S72°28'28"W	27.67'
L10	N61°17'30"W	50.00'
L11	N15°03'28"W	27.67'
L12	N26°38'52"E	50.16'
L13	N75°03'31"E	28.94'
L14	N28°42'30"E	43.06'
L15	N44°30'57"W	110.00'
L16	N45°37'38"E	61.89'
L17	N37°37'55"E	47.89'
L18	N72°47'40"W	81.99'
L19	N78°17'17"W	69.15'
L20	N71°16'52"W	92.48'
L21	N63°55'29"W	106.60'
L22	S70°45'51"E	18.98'
L39	N66°15'13"W	89.20'

### Legend

- Subdivision Boundary Line
- Lot Line
- Section Line
- Center Line
- Right-of-way Line
- Adjacent Property Line
- Match Line
- Tie Line
- Utility Easement Line
- ACHD Sidewalk Easement Line
- Ridenbaugh Canal Easement Line
- Pathway Easement Line
- ACHD Storm Water Drainage Easement Line
- Utility and Nampa & Meridian Irrigation District Easement Line
- Temporary Offsite Easement Line
- Section Corner, Found Aluminum Cap
- Quarter-Section Corner, Found Brass Cap
- Quarter-Section Corner, Found Aluminum Cap
- Found Aluminum Cap
- Found 5/8" Rebar, PLS 5081, Unless Otherwise Noted
- Found 5/8" Rebar, with Plastic Cap Marked "J-U-B 11334"
- Set 1/2"x24" Rebar, with Plastic Cap Marked "J-U-B 16642"
- Set 5/8"x24" Rebar, with Plastic Cap Marked "J-U-B 16642"
- Set 1-3/16" Bernt'sen BP Cap with Magnet Marked "J-U-B PLS 16642"
- Found 1/2" Rebar, PLS 5081, Reset 5/8"x24" Rebar with Plastic Cap Marked "JUB 16642"
- Point Not Set or Found
- Curve Number (Typical)
- Course Number (Typical)
- Lot Number (Typical)
- Reference Monument
- Witness Corner
- PLS Number Found on Monument



**J-U-B ENGINEERS, INC.**  
250 South Beechwood Avenue, Suite 201, Boise, ID 83709-0944  
p 208 376 7330 f 208 323 9336 w www.jub.com  
JUB Project No. 10-18-014