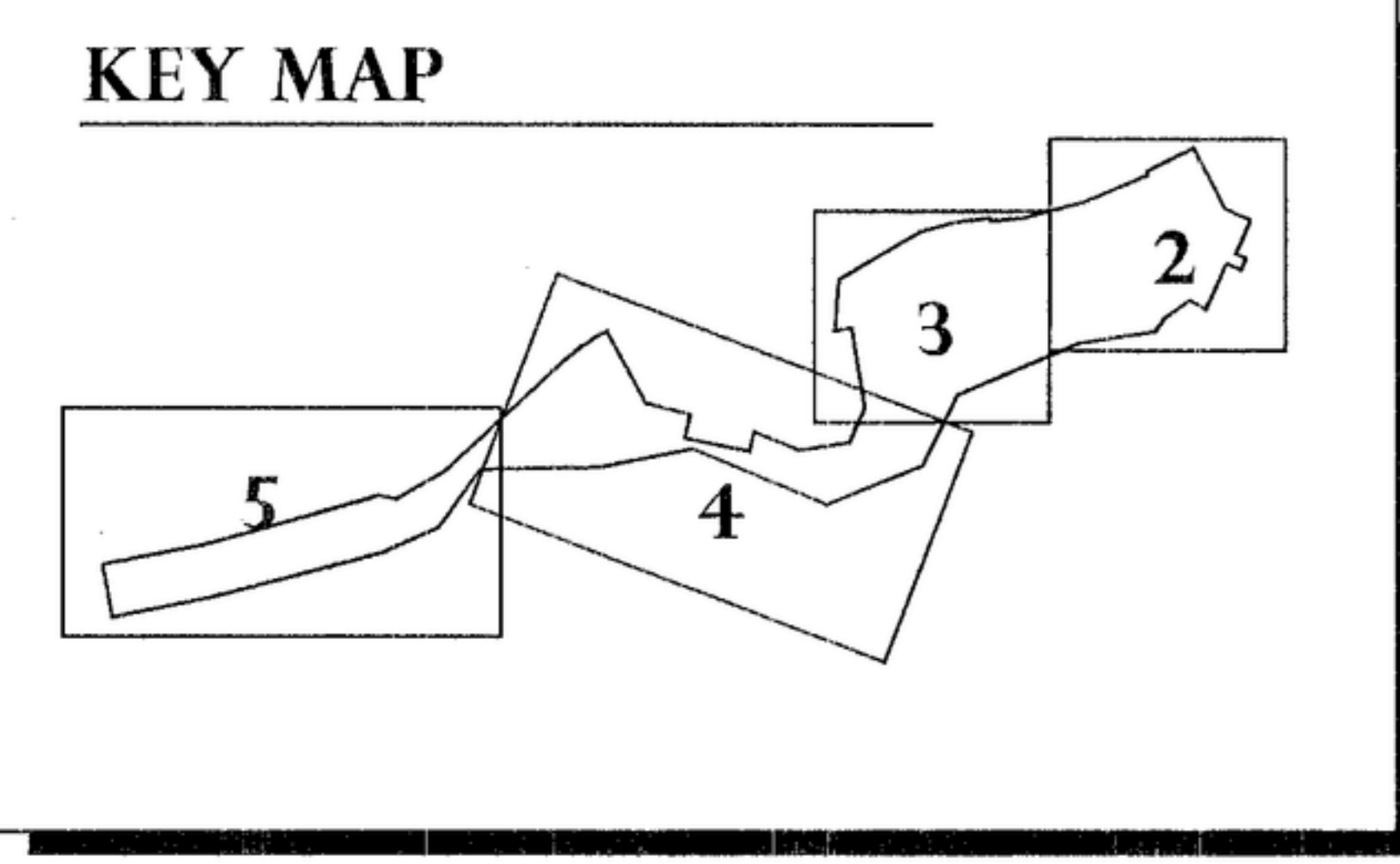
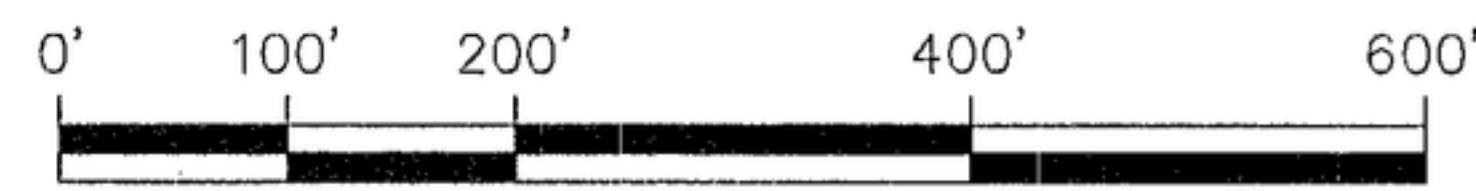


# HIGHLANDS COVE SUBDIVISION NO. 2

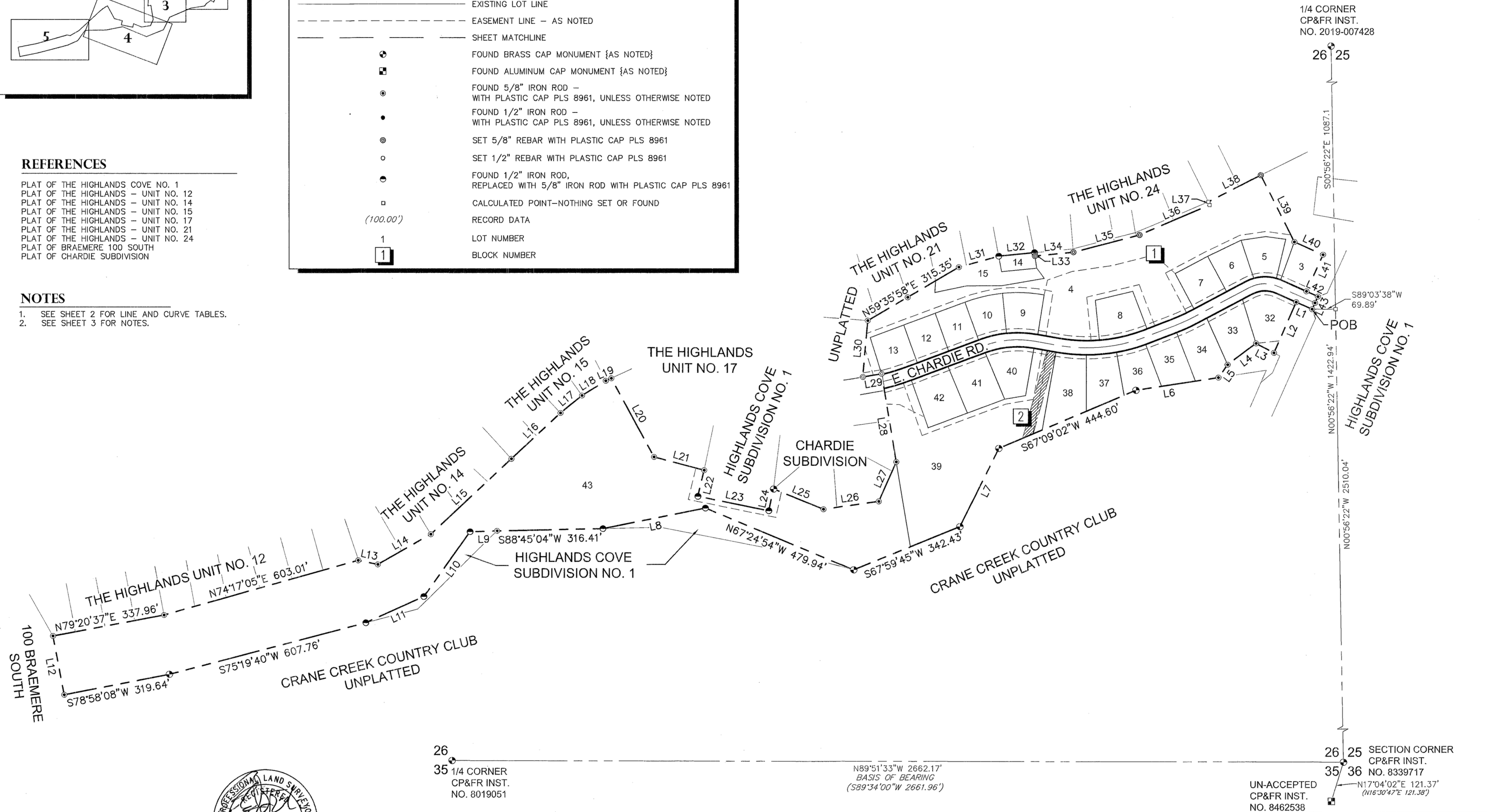
RE-SUBDIVISION OF LOT 28, BLOCK 2, HIGHLANDS COVE SUBDIVISION NO. 1 AND A PORTION OF THE SE 1/4 OF SECTION 26, TOWNSHIP 4 NORTH, RANGE 2 EAST, BOISE MERIDIAN, BOISE CITY, ADA COUNTY, IDAHO  
2019



LEGEND	
	SUBDIVISION BOUNDARY
	SECTION LINE
	RIGHT-OF-WAY LINE
	STREET CENTERLINE
	LOT LINE
	EXISTING LOT LINE
	EASEMENT LINE - AS NOTED
	SHEET MATCHLINE
	FOUND BRASS CAP MONUMENT {AS NOTED}
	FOUND ALUMINUM CAP MONUMENT {AS NOTED}
	FOUND 5/8" IRON ROD - WITH PLASTIC CAP PLS 8961, UNLESS OTHERWISE NOTED
	FOUND 1/2" IRON ROD - WITH PLASTIC CAP PLS 8961, UNLESS OTHERWISE NOTED
	SET 5/8" REBAR WITH PLASTIC CAP PLS 8961
	SET 1/2" REBAR WITH PLASTIC CAP PLS 8961
	FOUND 1/2" IRON ROD, REPLACED WITH 5/8" IRON ROD WITH PLASTIC CAP PLS 8961
	CALCULATED POINT-NOTHING SET OR FOUND
	RECORD DATA
	LOT NUMBER
	BLOCK NUMBER

- REFERENCES**
- PLAT OF THE HIGHLANDS COVE NO. 1
  - PLAT OF THE HIGHLANDS - UNIT NO. 12
  - PLAT OF THE HIGHLANDS - UNIT NO. 14
  - PLAT OF THE HIGHLANDS - UNIT NO. 15
  - PLAT OF THE HIGHLANDS - UNIT NO. 17
  - PLAT OF THE HIGHLANDS - UNIT NO. 21
  - PLAT OF THE HIGHLANDS - UNIT NO. 24
  - PLAT OF BRAEMERE 100 SOUTH
  - PLAT OF CHARDIE SUBDIVISION

- NOTES**
- SEE SHEET 2 FOR LINE AND CURVE TABLES.
  - SEE SHEET 3 FOR NOTES.



**T-O ENGINEERS**  
 2471 S. TITANIUM PLACE  
 MERIDIAN, IDAHO 83642-6703  
 PHONE: (208) 323-2288 FAX: (208) 323-2399