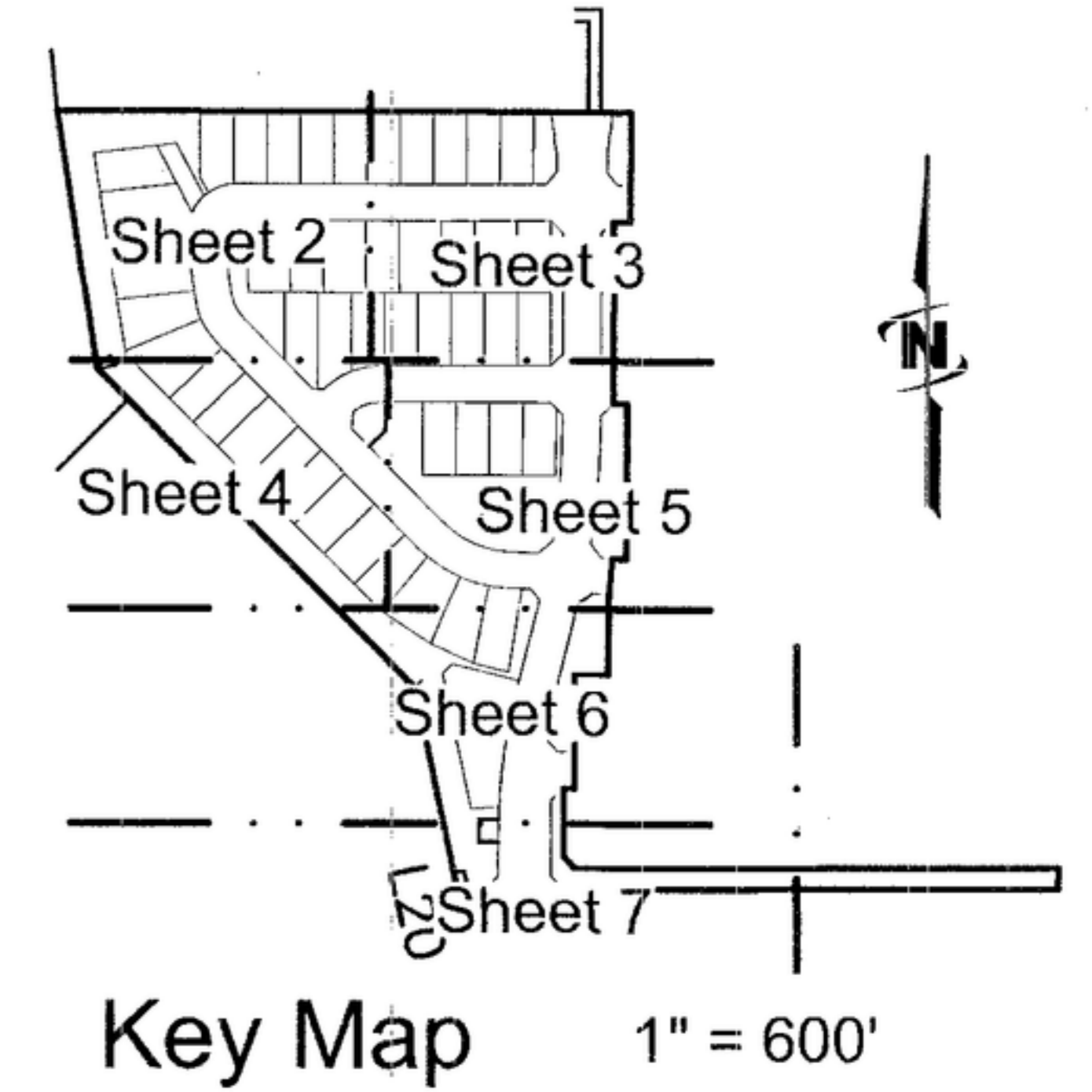
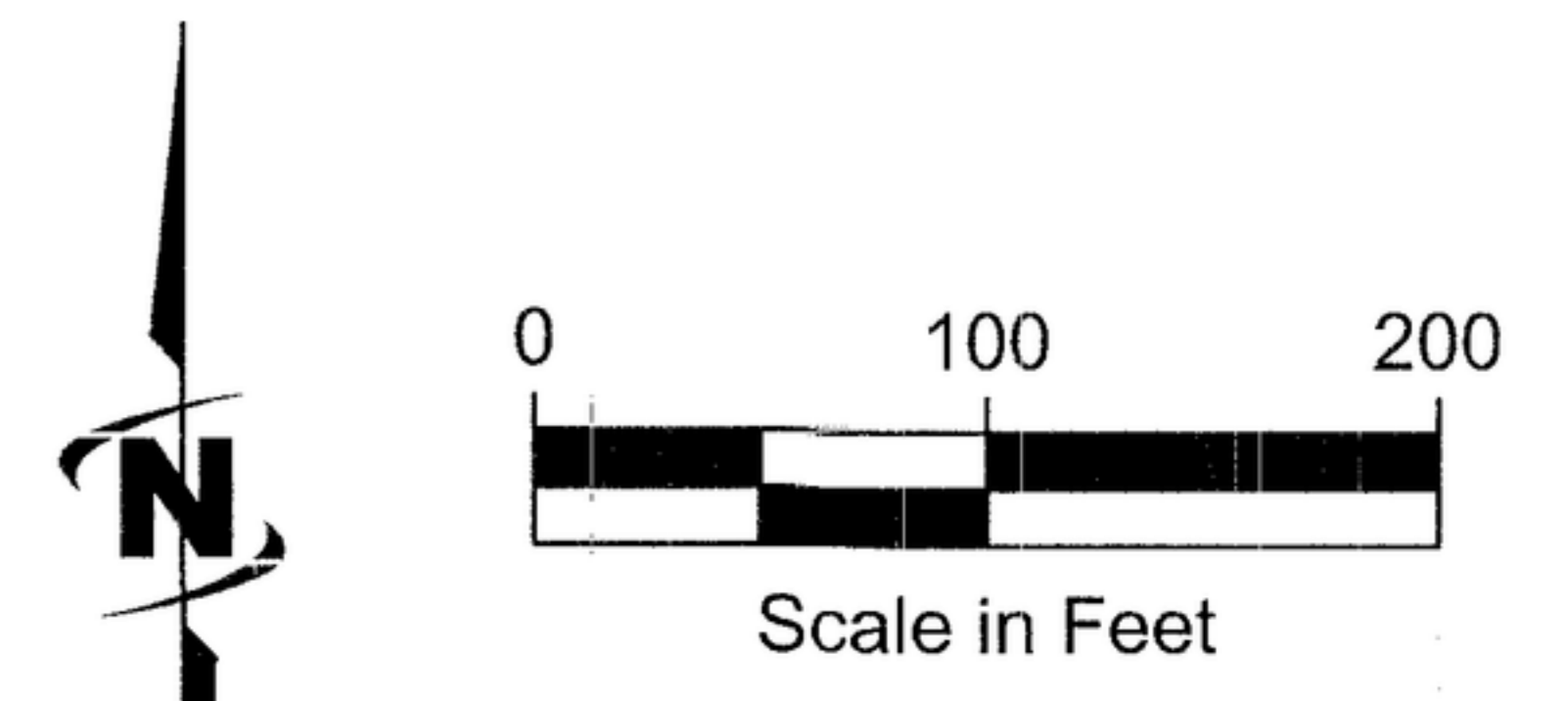


* 2020015801
Original monument not set at northwest corner of Lot 1.
Set 40.0 foot witness corner, 5/8" diameter rebar with plastic cap marked "J-U-B 16642."

PLAT SHOWING Bicentennial Farm Subdivision No. 1

Situated in the South Half of the Southwest Quarter of
Section 33, Township 3 North, Range 1 East, Boise Meridian,
City of Meridian, Ada County, Idaho.
2019

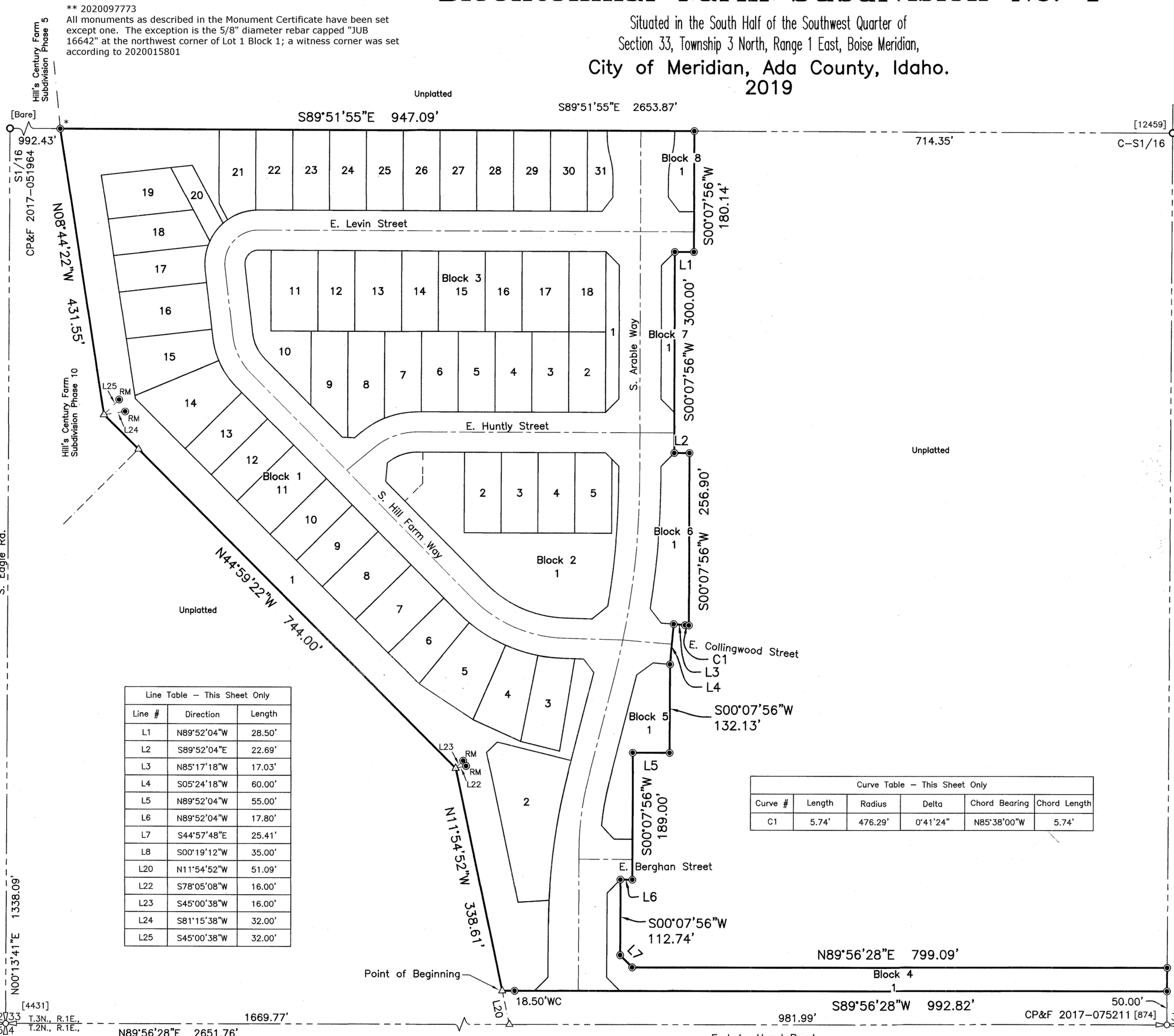


Monument Certificate**

This is to certify that this plat is being recorded under the provisions of Idaho Code 50-1331 through 50-1333 and that all interior monuments will be set within one year from the recording date of this plat.

Legend

- Subdivision Boundary Line
- Lot Line
- Section Line
- Center Line
- Right-of-way Line
- Adjacent Property Line
- Match Line
- Tie Line
- Utility Easement Line
- Sewer Easement Line
- Water Easement Line
- ACHD Storm Drain Easement Line
- ACHD Sidewalk Easement Line
- ACHD Permanent Easement Line
- Section Corner, Found Aluminum Cap
- Quarter-Section Corner, Found Aluminum Cap
- Found 5/8" Rebar Marked as Noted
- Set 1/2"x24" Rebar, with Plastic Cap Marked "J-U-B 16642"
- Set 5/8"x24" Rebar, with Plastic Cap Marked "J-U-B 16642"
- Set 1/2"x24" Rebar, with Plastic Cap Marked "EASEMENT JUB 16642"
- Point Not Set or Found
- Curve Number (Typical)
- Course Number (Typical)
- # symbol"/> - Lot Number (Typical)
- [####] symbol"/> - PLS Number Found on Monument
- WC symbol"/> - Witness Corner
- RM symbol"/> - Reference Monument



Line Table - This Sheet Only

Line #	Direction	Length
L1	N89°52'04"W	28.50'
L2	S89°52'04"E	22.69'
L3	N85°17'18"W	17.03'
L4	S05°24'18"W	60.00'
L5	N89°52'04"W	55.00'
L6	N89°52'04"W	17.80'
L7	S44°57'48"E	25.41'
L8	S00°19'12"W	35.00'
L20	N11°54'52"W	51.09'
L22	S78°05'08"W	16.00'
L23	S45°00'38"W	16.00'
L24	S81°15'38"W	32.00'
L25	S45°00'38"W	32.00'

Curve Table - This Sheet Only

Curve #	Length	Radius	Delta	Chord Bearing	Chord Length
C1	5.74'	476.29'	0°41'24"	N85°38'00"W	5.74'

[4431] 1669.77' N89°56'28"E 2651.76' Basis of Bearings
 32733 T.3N., R.1E., 544 T.2N., R.1E., CP&F 2015-013745
 18.50'WC 981.99' S89°56'28"W 992.82' 50.00' 33
 CP&F 2017-075211 [874] E. Lake Hazel Road

J-U-B ENGINEERS, INC.
 250 South Beechwood Avenue, Suite 201, Boise, ID 83709-0944
 P 208 376 7330 F 208 323 9336 W www.jub.com
 JUB Project No. 10-17-150
 3/27/19
 SHEET 1 OF 10