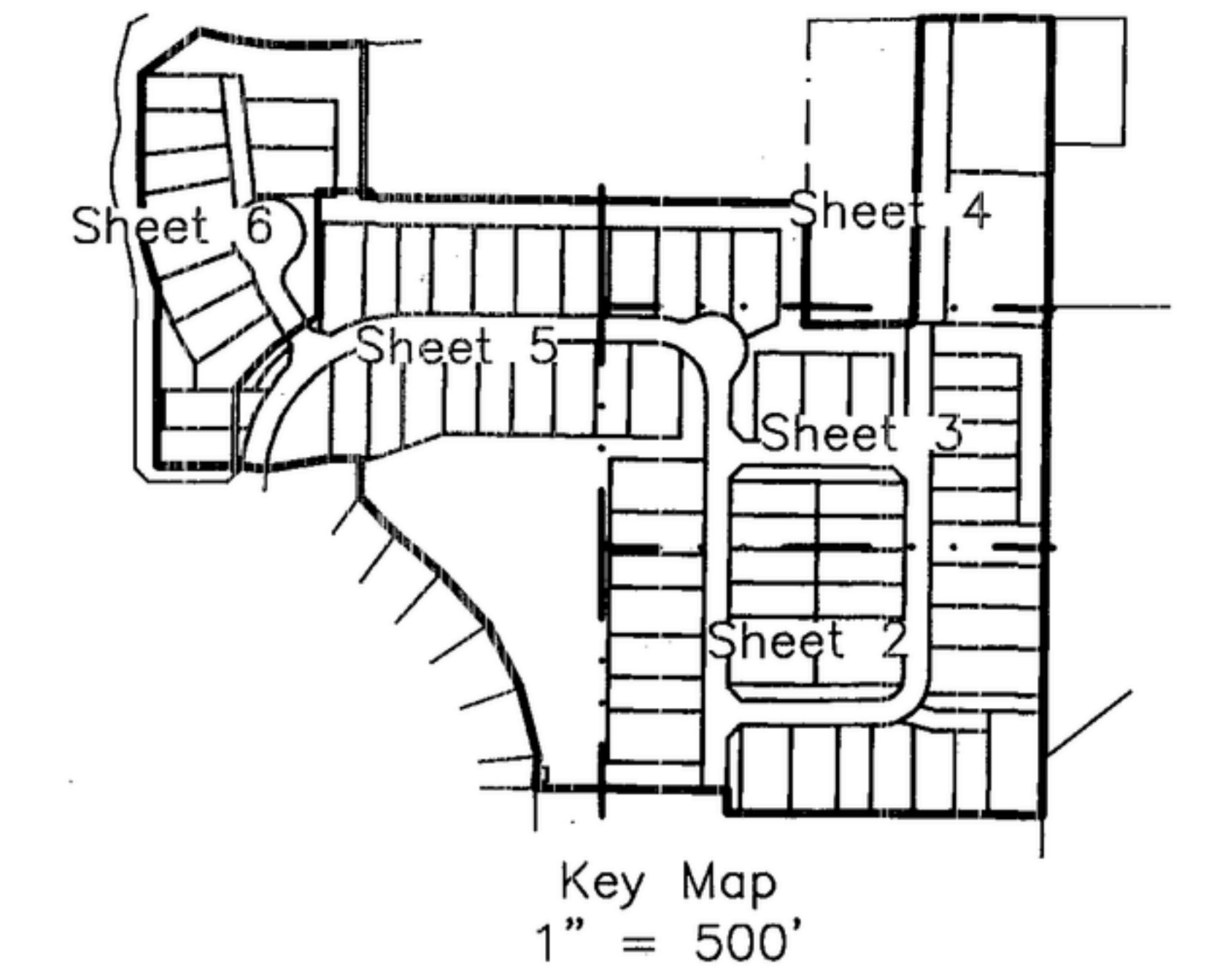
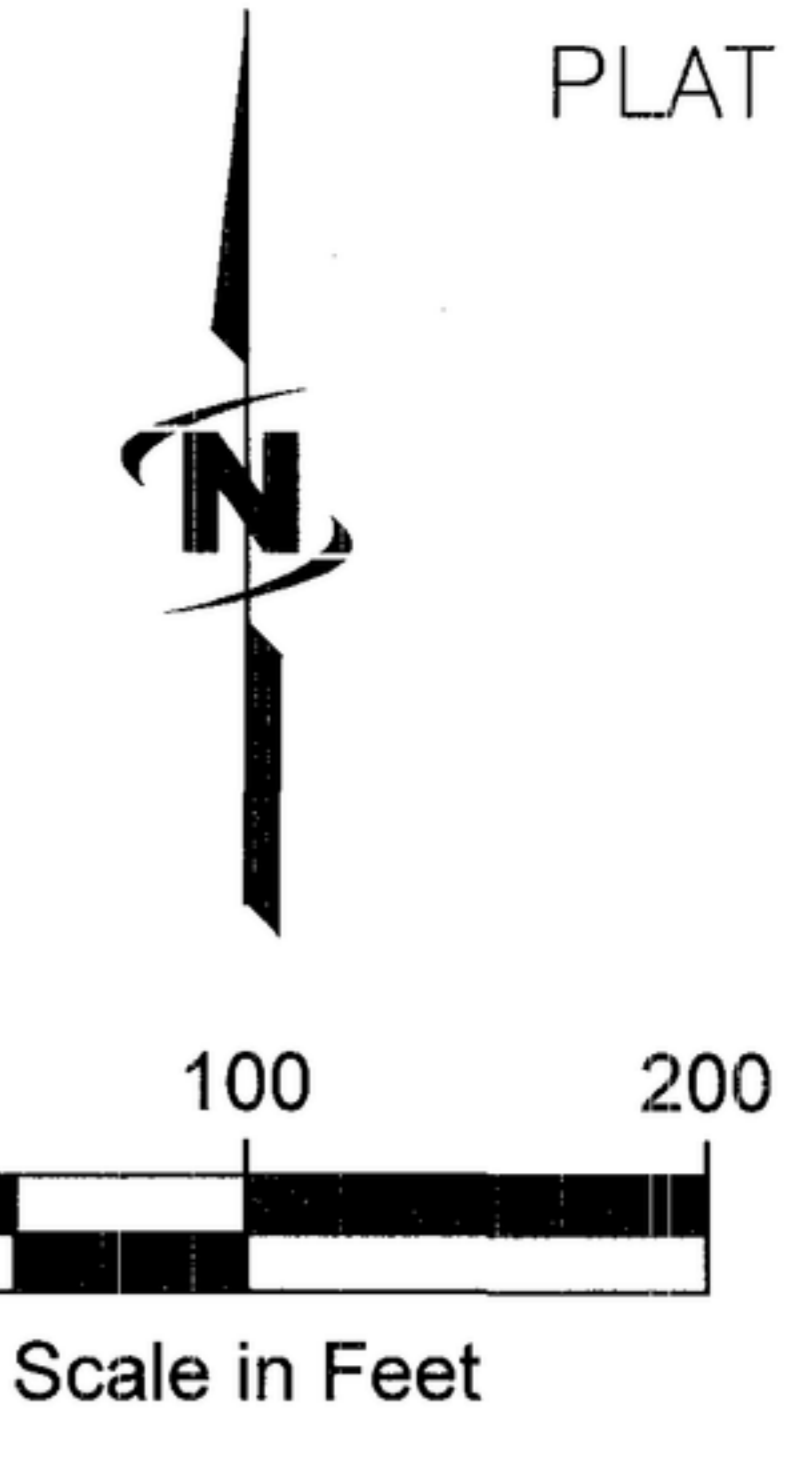


PLAT SHOWING MOON VALLEY SUBDIVISION No. 2

That portion of the West Half of Section 15,
including a portion of Lot 9 of R.L. Hon Subdivision and a portion of Lot 2, Block 1 of Matt Subdivision,
Township 4 North, Range 1 West, Boise Meridian,
City of Star, Ada County, Idaho.
2021

Basis of Bearing
S89°06'20"E
2644.08'
W. State St.
Section 15
CP&F Inst No. 2021-093058

Found Brass Cap
North 1/4 Corner
Section 15
CP&F Inst No. 108039901



Curve #	Length	Radius	Delta	Chord Bearing	Chord Length
C1	184.80'	533.00'	19°51'56"	S83°11'44"E	183.88'
C2	140.63'	8288.38'	0°58'20"	N89°32'05"E	140.63'

Line #	Direction	Length
L1	N86°50'56"E	61.21'
L2	S89°52'50"E	53.25'
L3	N00°36'23"E	33.41'
L4	N04°51'12"E	48.05'
L5	N00°50'47"E	55.64'
L6	N89°09'13"W	44.41'
L7	N82°54'18"W	37.00'
L8	N23°31'36"W	12.43'
L9	N16°26'14"W	68.26'
L10	N53°37'12"E	108.04'



- ### Legend
- Subdivision Boundary Line
 - Lot Line
 - Right-of-way Line
 - Section Line
 - Adjacent Property Line
 - Tie Line
 - Match Line
 - Utility Easement Line
 - Star Sewer & Water District Easement Line
 - Little Pioneer Irrigation Easement Line
 - Sidewalk Easement Line
 - ACHD Sidewalk Easement Line
 - Emergency Access Easement Line
 - Utility & Pond Maintenance Easement Line
 - ACHD Master Storm Drain Easement Line
 - Utility & Private Drainage Easement Line
 - Section Corner, Found as Noted
 - Quarter-Section Corner, Found as Noted
 - Found Brass Cap, as noted
 - Found 1/2" Rebar, as noted
 - Found 5/8" Rebar w/Plastic Cap marked "J-U-B 16642", unless otherwise noted
 - Found Right-of-Way Marker, 6"x6" concrete with 2.5" diameter Brass Cap w/o stamping, destroyed by construction, Reset 1-3/16" Bernt'sen BP Cap with Magnet Marked "J-U-B 16642"
 - Found 1/2" Rebar, Reset 5/8"x24" Rebar w/ Plastic Cap Marked "J-U-B 16642"
 - Found 1/2" Rebar w/ Plastic Cap marked "PLS 2471", Reset 5/8"x24" Rebar with Plastic Cap Marked "J-U-B 16642"
 - Found 5/8" Rebar w/ Illegible Cap, Replaced w/ Plastic Cap Marked "J-U-B 16642"
 - Set 1/2"x24" Rebar, with Plastic Cap Marked "J-U-B 16642"
 - Set 5/8"x24" Rebar, with Plastic Cap Marked "J-U-B 16642"
 - Set 1-3/16" Bernt'sen, BP Cap with Magnet Marked "J-U-B 16642"
 - Set 1/2"x24" Rebar, with Plastic Cap Marked "EASEMENT JUB 16642"
 - Calculated Position Not Set or Found
 - C# - Curve Number (Typical)
 - L# - Course Number (Typical)
 - # - Lot Number (Typical)
 - [####] - PLS Number Found on Monument

J-U-B ENGINEERS, INC.
24 JUN 2021

250 South Beechwood Avenue, Suite 201, Boise, ID 83709-0944
p 208 376 7330 w www.jub.com