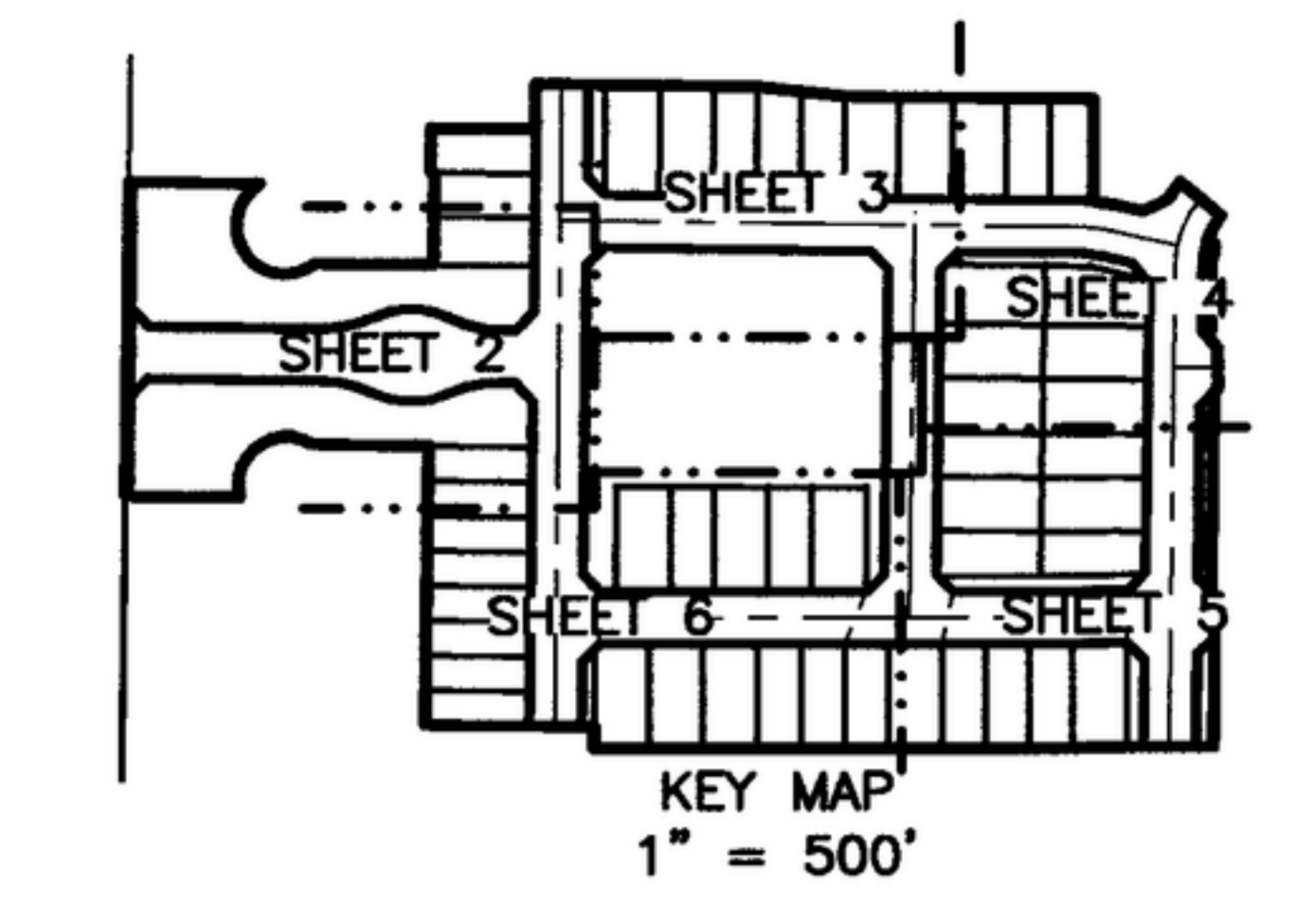
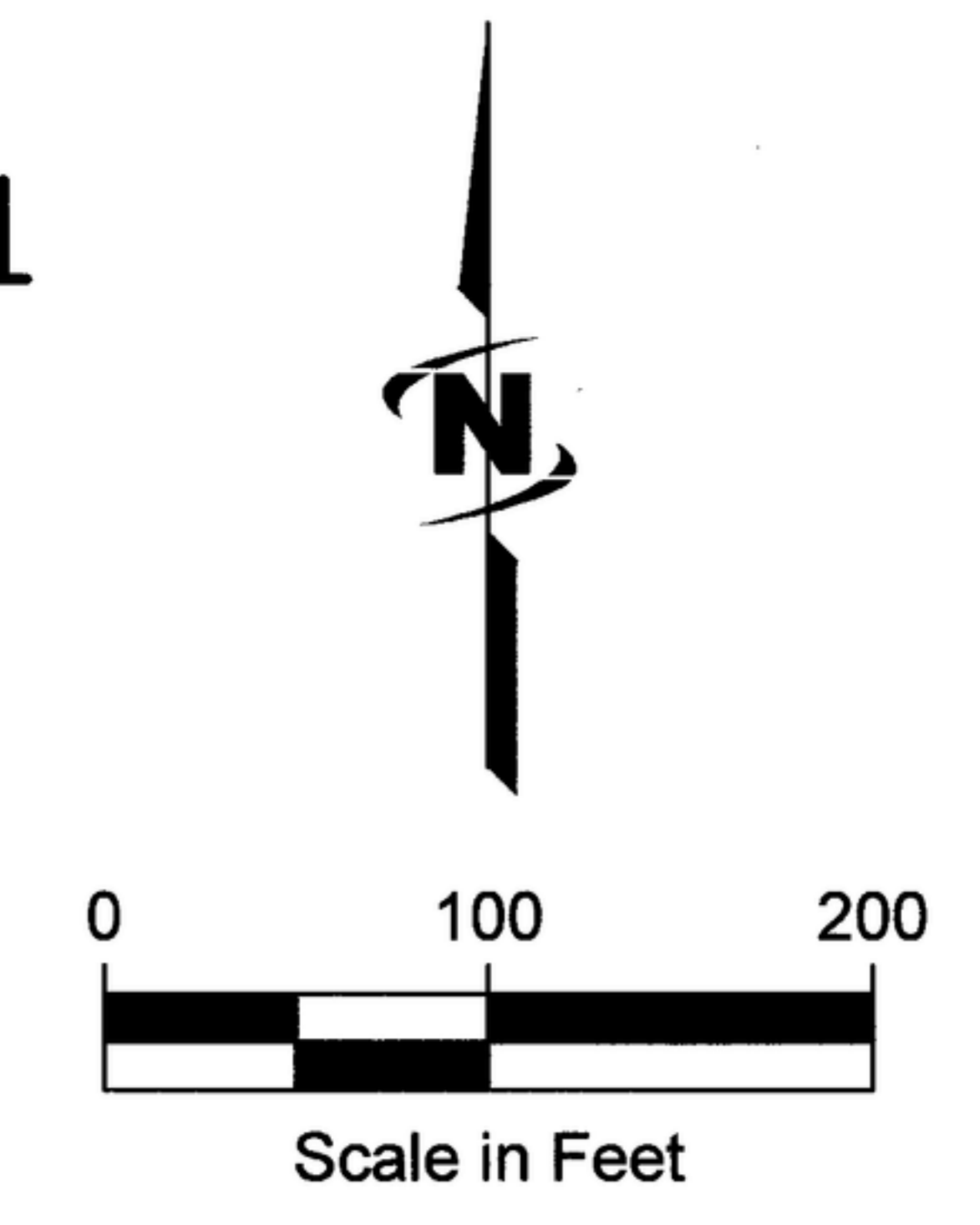


PLAT SHOWING Falcon Crest Subdivision No. 1

Situated in the Southwest quarter of
Section 22, Township 2 North, Range 1 East, Boise Meridian,
City of Kuna, Ada County, Idaho.
2022

* 2022011506
S Forefathers Ln (Prvt) should be corrected to
S Connection Ln (Prvt)
W Resolute Ln (Prvt) should be corrected to
W Wellness Ln (Prvt)
** 2023062804
Vacation of a portion of an existing utility easement in Lot 45 Block 1

Found Brass Cap
CP&F 2015114811
E. DEER
FLAT RD.



Curve Table - This Sheet Only					
Curve #	Length	Radius	Delta	Chord Bearing	Chord Length
C1	182.17'	55.50'	188°04'05"	S34°57'22"E	110.72'
C2	26.01'	180.00'	8°16'41"	S81°57'00"E	25.98'
C3	24.79'	155.00'	9°09'43"	N35°19'41"E	24.76'
C4	33.63'	95.00'	20°16'50"	S29°46'07"W	33.45'
C5	132.23'	55.50'	136°30'44"	S53°52'59"W	103.10'

Line Table - This Sheet Only		
Line #	Direction	Length
L1	S89°17'33"E	150.39'
L2	S89°17'13"E	135.05'
L3	S89°17'13"E	120.00'
L4	N00°42'47"E	52.00'
L5	S77°48'40"E	32.42'
L6	N64°37'07"E	31.70'
L7	S50°05'28"E	60.00'
L8	S70°22'18"E	10.00'

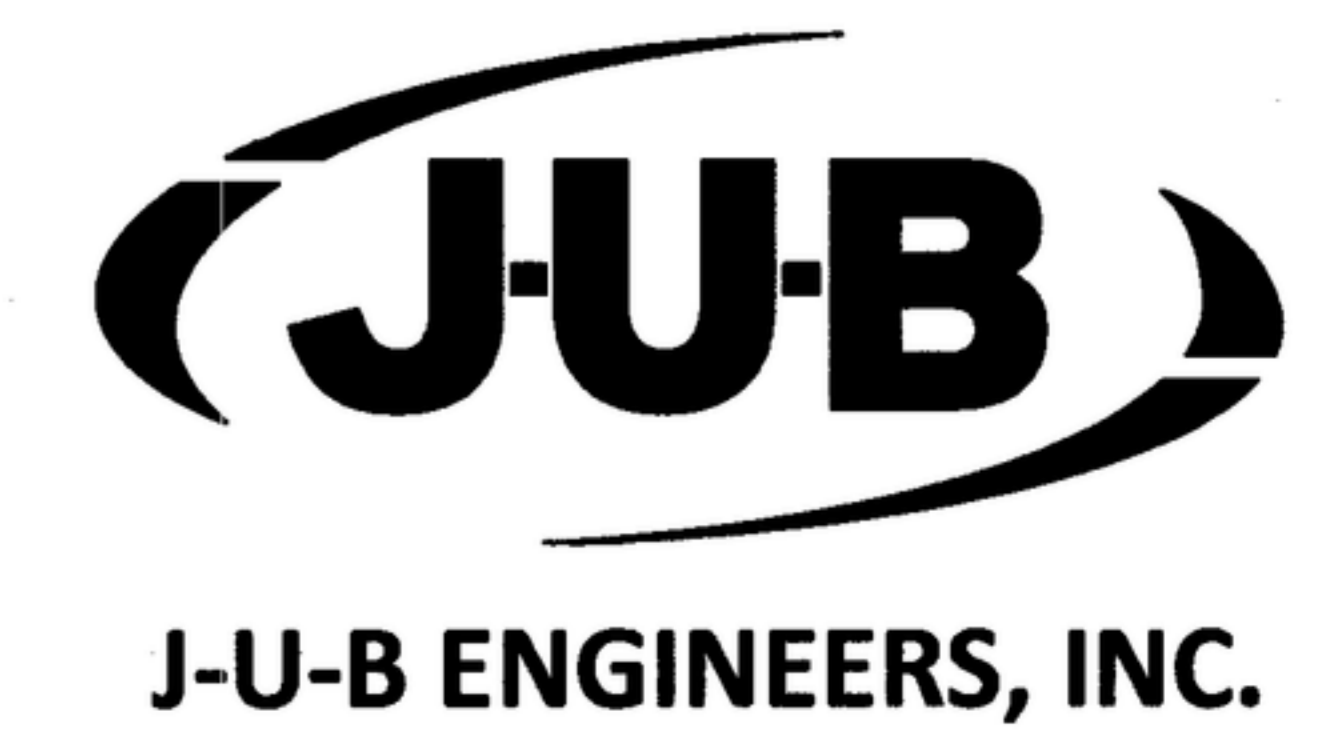
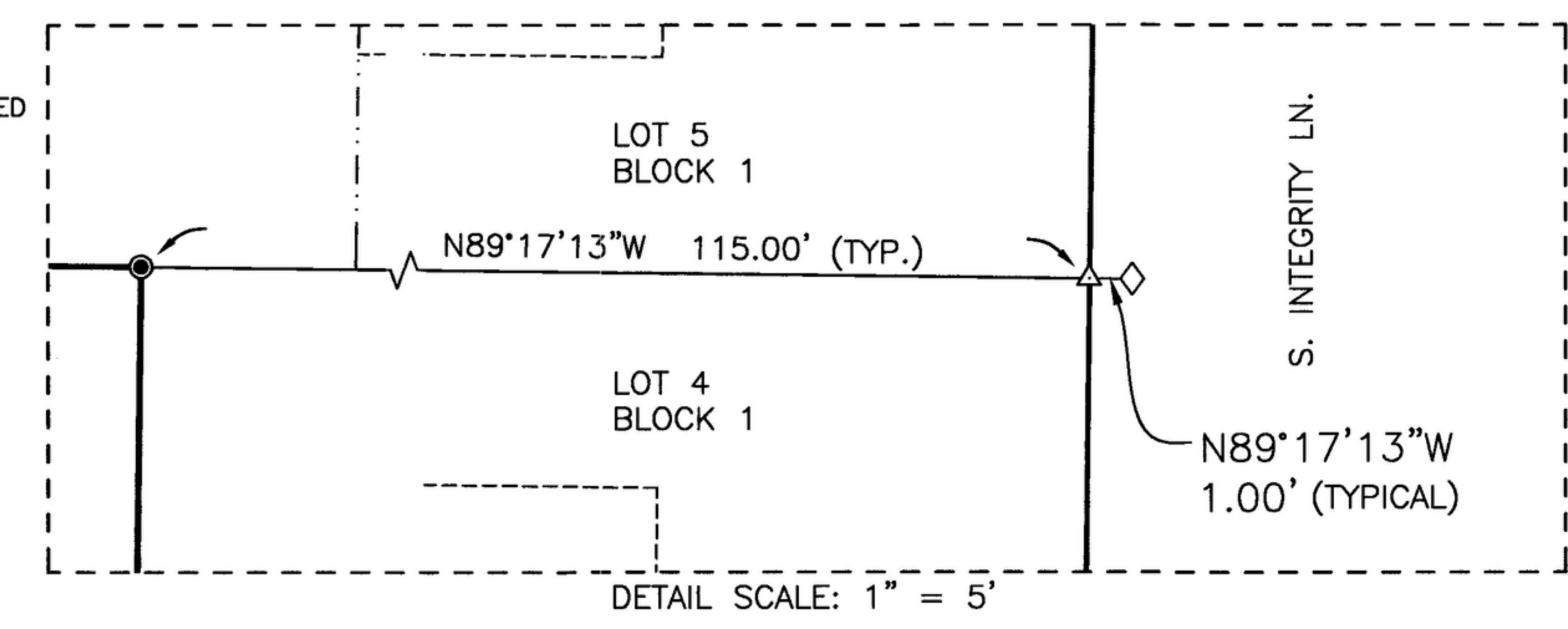
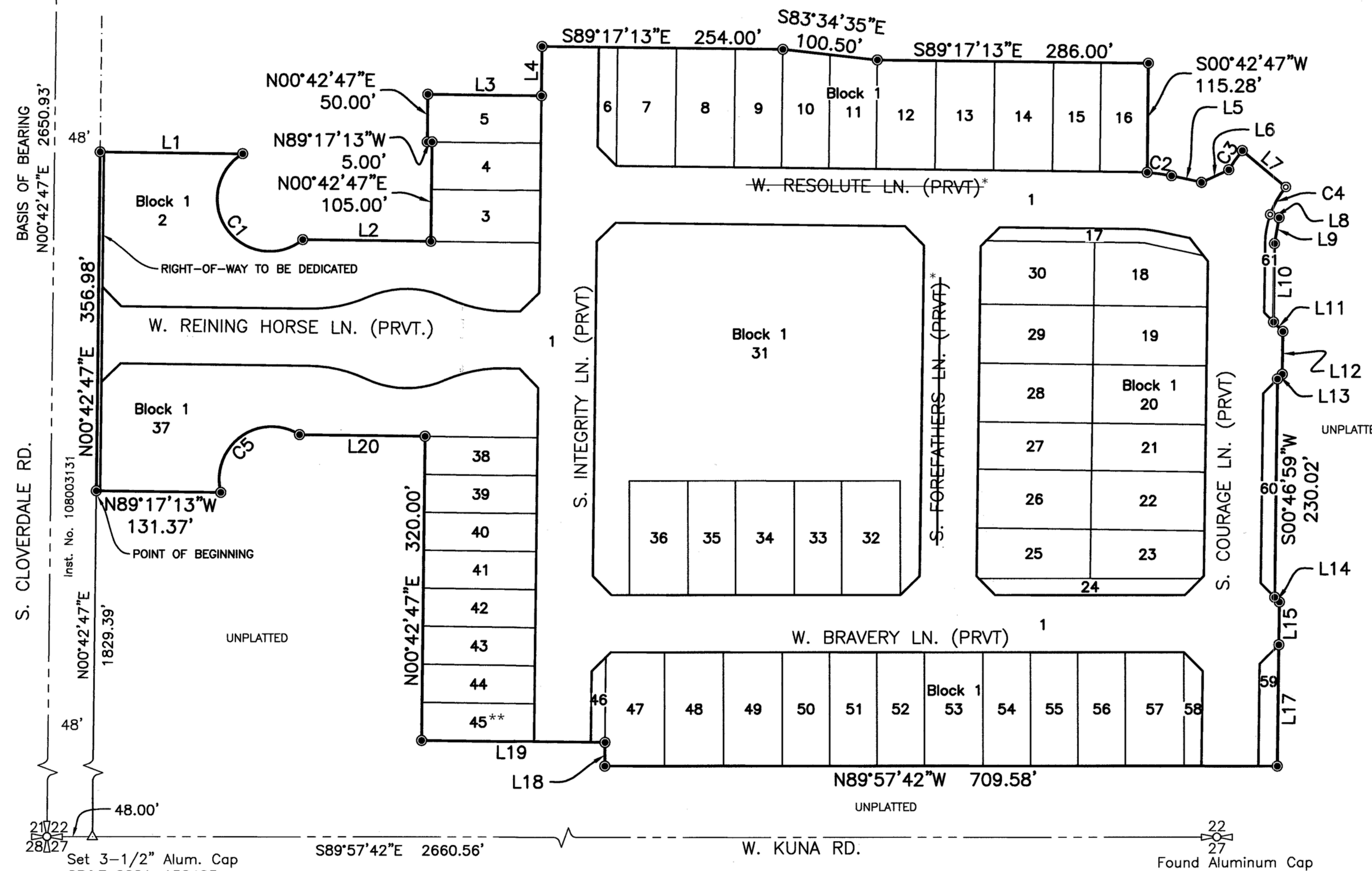
Line Table - This Sheet Only		
Line #	Direction	Length
L9	S10°12'21"W	27.83'
L10	S00°46'59"W	82.61'
L11	S44°35'22"E	14.05'
L12	S00°46'59"W	45.00'
L13	S45°24'38"W	7.12'
L14	S44°35'22"E	7.02'
L15	S00°46'59"W	45.00'
L17	S00°46'59"W	127.51'

Line Table - This Sheet Only		
Line #	Direction	Length
L18	N00°42'47"E	24.73'
L19	N89°17'13"W	193.75'
L20	N89°17'13"W	132.35'

Legend

- Subdivision Boundary Line
- Lot Line
- Right-of-way Line
- Section Line
- Center Line
- Adjacent Property Line
- Match Line
- Home Owners Association Irrigation Easement Line
- Utility Easement Line
- Private Sidewalk Easement Line
- Off-site Drainage Easement Line
- Off-site Sidewalk Easement Line
- Off-site Utility Easement Line

- Section Corner, as noted
- Quarter-Section Corner, as noted
- Set 1/2"x24" Rebar, with Plastic Cap Marked "J-U-B 16642"
- Set 5/8"x24" Rebar, with Plastic Cap Marked "J-U-B 16642"
- Set 1-3/16" Berntsen BP Cap with Magnet Marked "J-U-B 16642"
- Point Not Set or Found
- Curve Number (Typical)
- Course Number (Typical)
- Lot Number (Typical)
- Indicates Witness Corner
- Reference Monument: Set 1-3/16" Berntsen BP Cap with Magnet Marked "WC J-U-B 16642" on a Prolongation of the Property Line at a Distance of 1.00 Foot from the Property Corner, Unless Otherwise Noted. See Detail



J-U-B ENGINEERS, INC.
2760 W. Excursion Ln., Suite 400, Meridian, ID 83642
p 208 376 7330 w www.jub.com
JUB Project No. 10-19-148