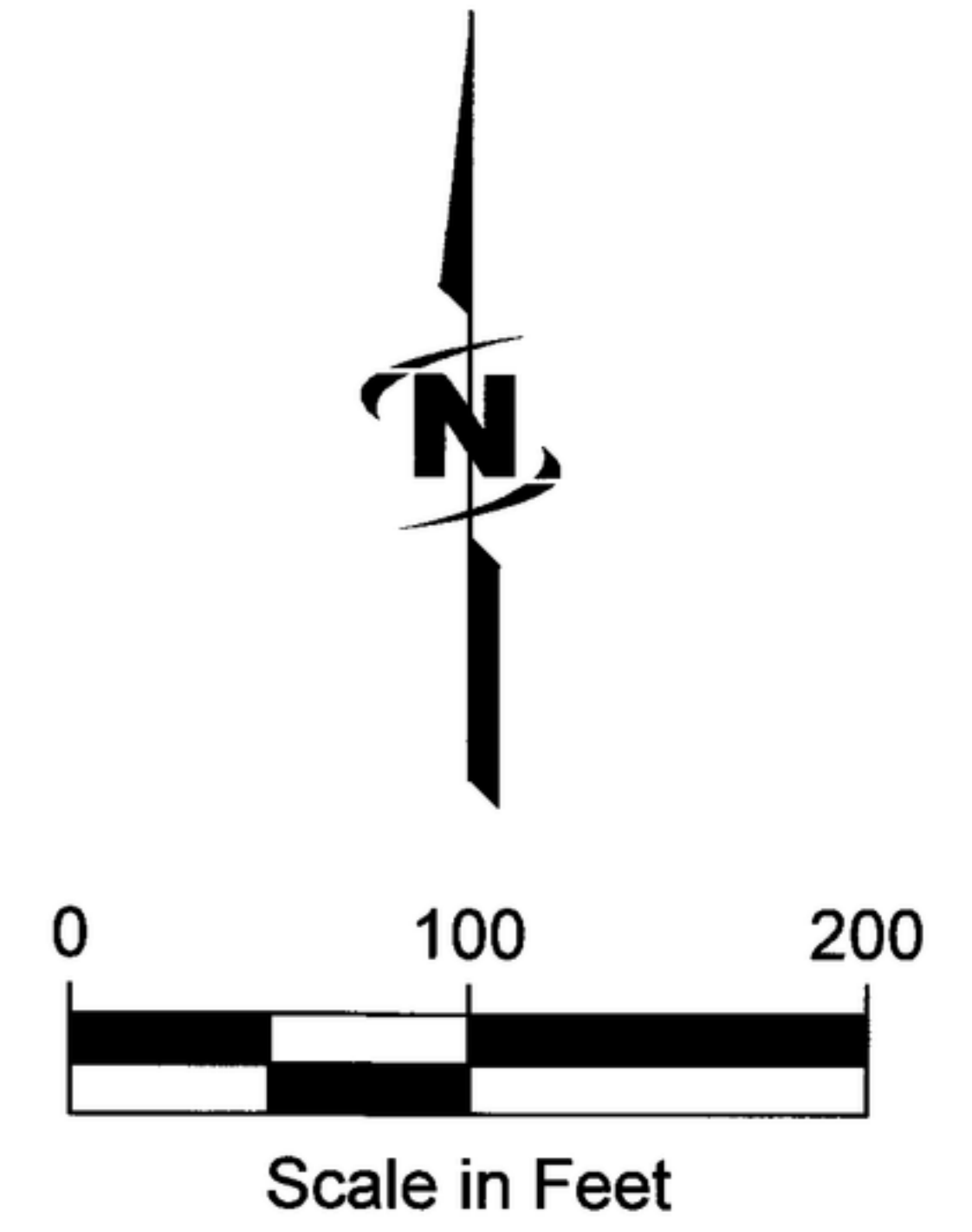
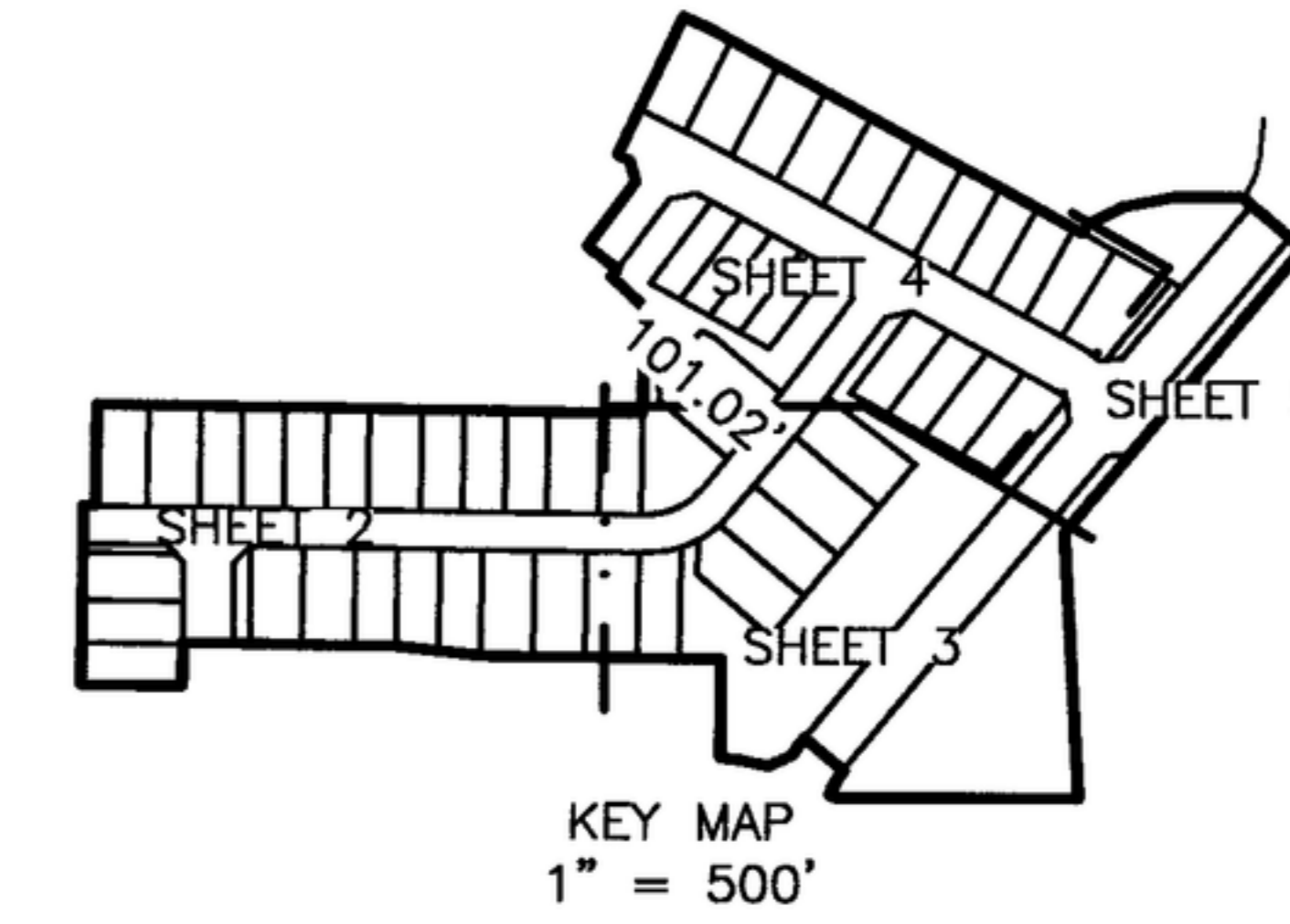


Falcon Crest Subdivision No. 2

Situated in the West half of
 Section 22, Township 2 North, Range 1 East, Boise Meridian,
 City of Kuna, Ada County, Idaho.
 2022

Legend

- Subdivision Boundary Line
 - Lot Line
 - Right-of-way Line
 - Section Line
 - Center Line
 - Adjacent Property Line
 - Tie Line
 - Match Line
 - Homeowners Association Irrigation Easement Line
 - Utility Easement Line
 - Private Sidewalk Easement Line
-
- Section Corner, as noted
 - Quarter-Section Corner, as noted
 - Set 1/2"x24" Rebar, with Plastic Cap Marked "J-U-B 16642"
 - Set 5/8"x24" Rebar, with Plastic Cap Marked "J-U-B 16642"
 - Set 1-3/16" Bern't'sen BP Cap with Magnet Marked "J-U-B 16642"
 - Found 5/8" Rebar with Plastic Cap Marked "J-U-B 16642"
 - Point Not Set or Found
 - Curve Number (Typical)
 - Course Number (Typical)
 - Lot Number (Typical)



Brass Cap
 CP&F 2015114811

16715
 21722

S. CLOVERDALE RD.
 N00°42'27"E 2652.56'

48'

Aluminum Cap
 CP&F 2015114814

21
 22

Basis of Bearing
 N00°42'47"E 2650.93'

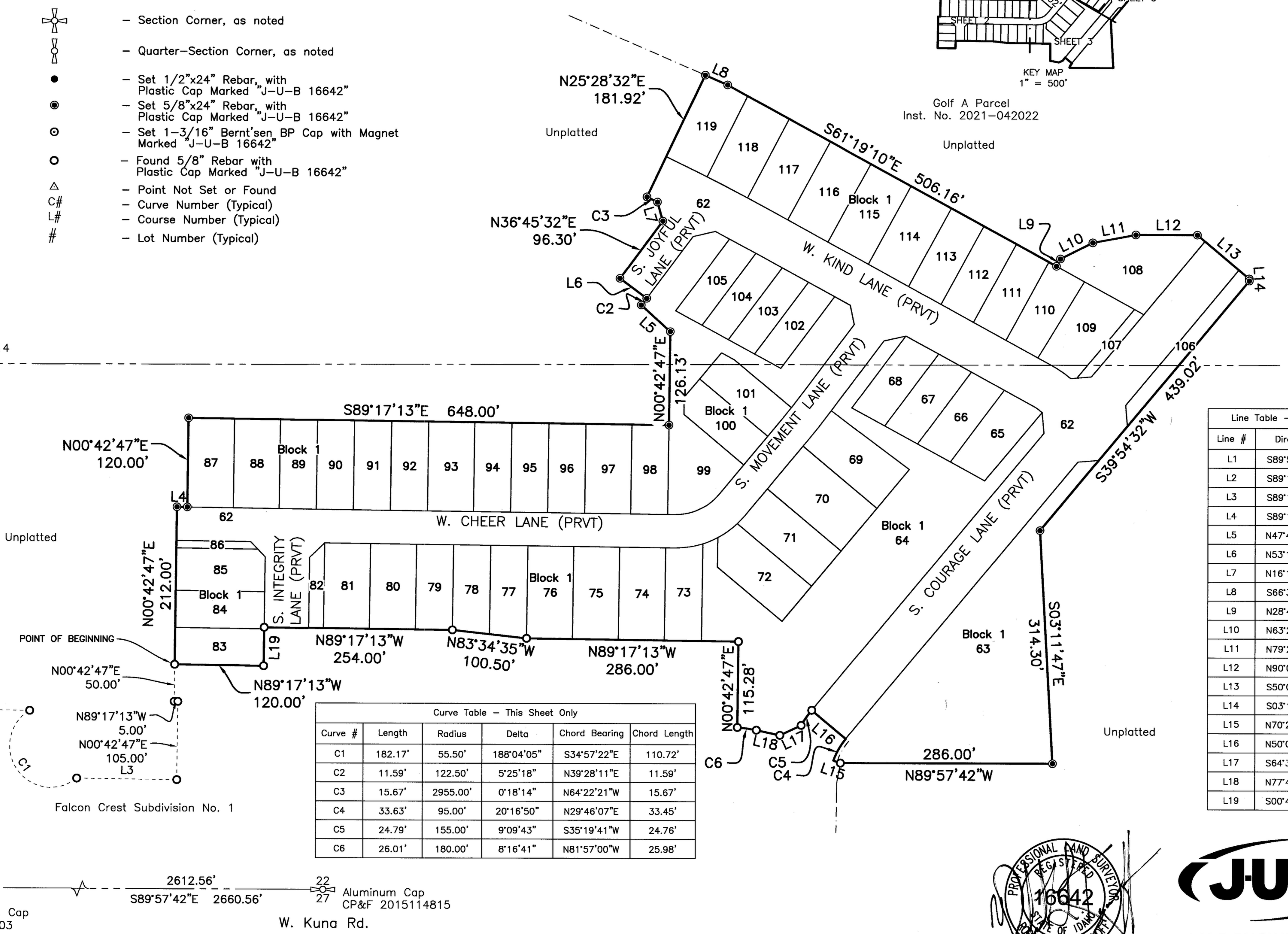
48'

N00°42'47"E 2186.37'

L1

21722
 28727

Set 3-1/2" Alum. Cap
 CP&F 2021-152403



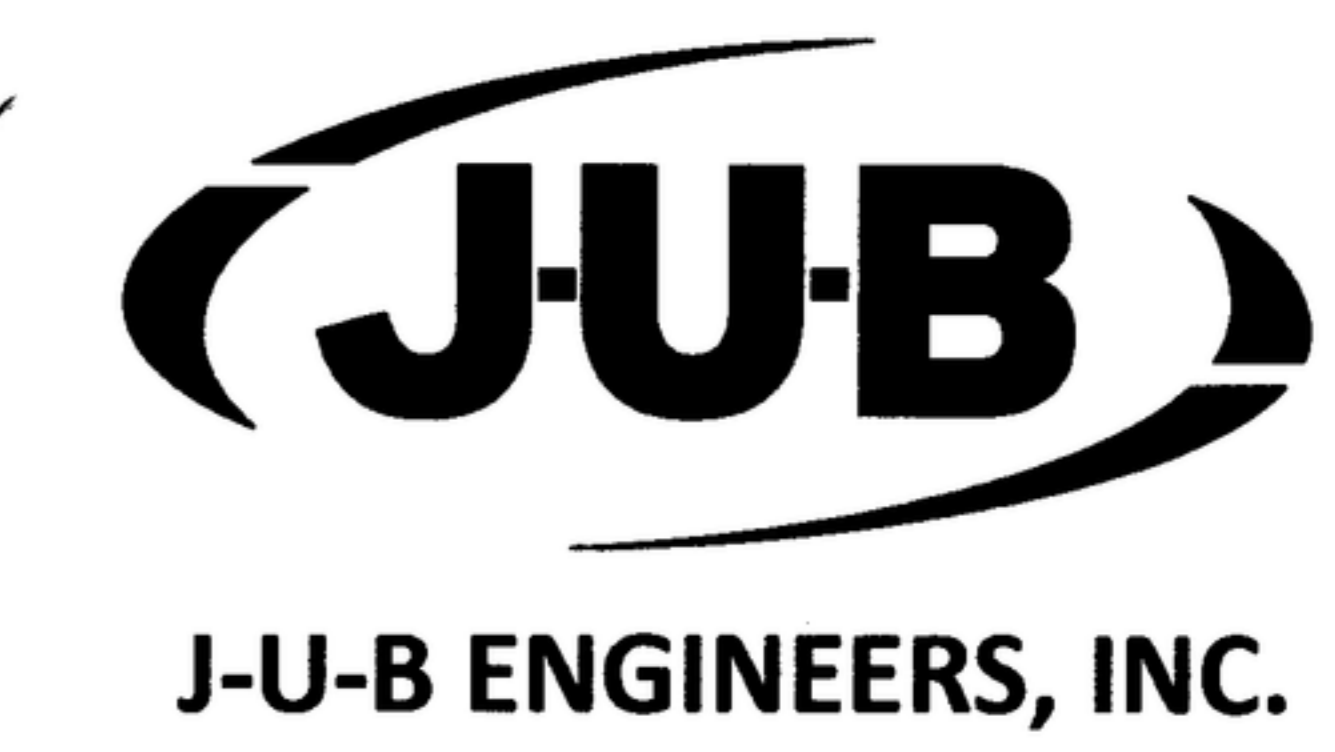
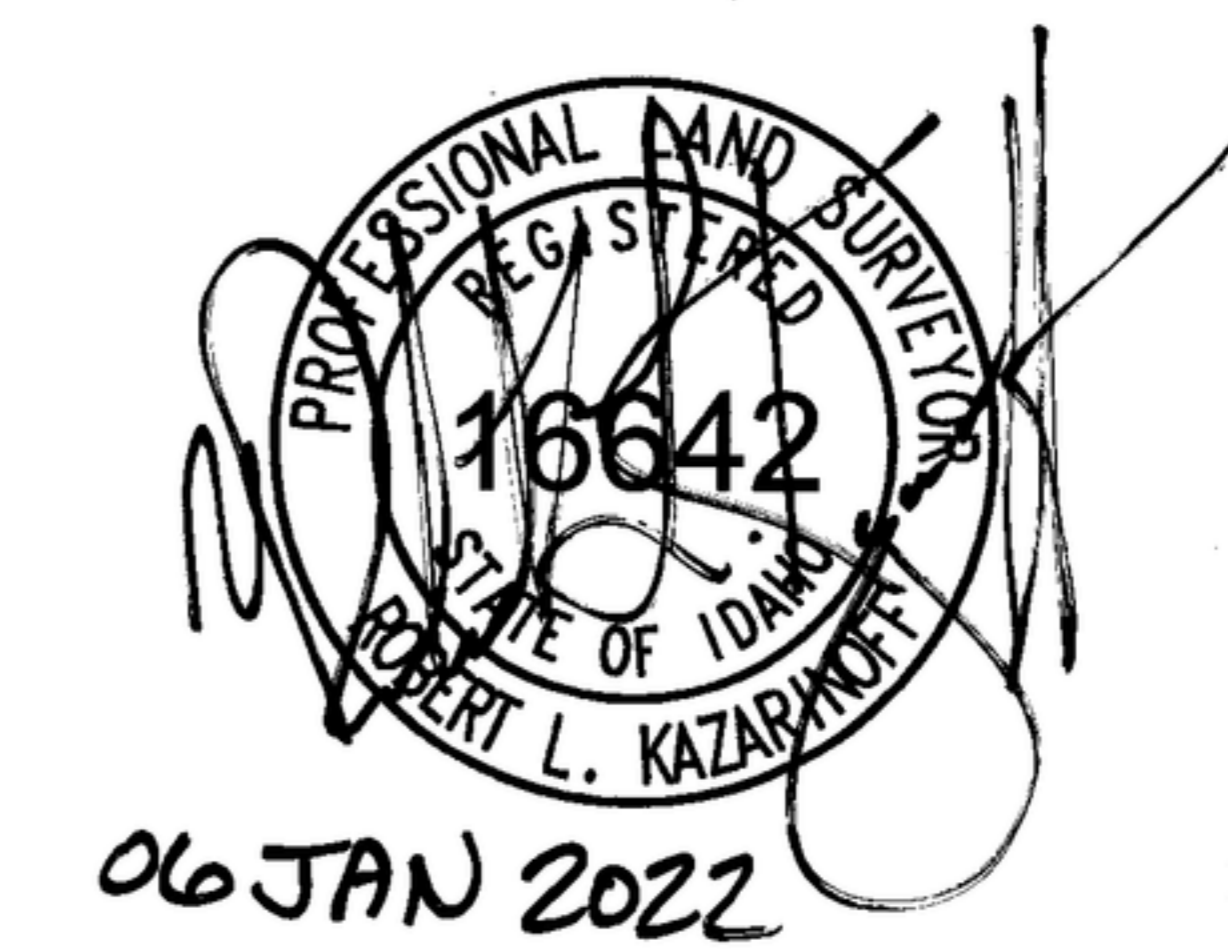
Golf A Parcel
 Inst. No. 2021-042022

Line Table - This Sheet Only

Line #	Direction	Length
L1	S89°57'42"E	48.00'
L2	S89°17'33"E	150.39'
L3	S89°17'13"E	135.05'
L4	S89°17'13"E	14.00'
L5	N47°49'10"W	53.23'
L6	N53°14'28"W	45.00'
L7	N16°14'22"W	26.53'
L8	S66°31'43"E	32.90'
L9	N28°40'50"E	11.20'
L10	N63°26'06"E	48.80'
L11	N79°22'49"E	59.02'
L12	N90°00'00"E	83.01'
L13	S50°05'28"E	91.35'
L14	S03°11'47"E	2.95'
L15	N70°22'18"W	10.00'
L16	N50°05'28"W	60.00'
L17	S64°37'07"W	31.70'
L18	N77°48'40"W	32.42'
L19	S00°42'47"W	52.00'

Curve Table - This Sheet Only

Curve #	Length	Radius	Delta	Chord Bearing	Chord Length
C1	182.17'	55.50'	188°04'05"	S34°57'22"E	110.72'
C2	11.59'	122.50'	5°25'18"	N39°28'11"E	11.59'
C3	15.67'	2955.00'	0°18'14"	N64°22'21"W	15.67'
C4	33.63'	95.00'	20°16'50"	N29°46'07"E	33.45'
C5	24.79'	155.00'	9°09'43"	S35°19'41"W	24.76'
C6	26.01'	180.00'	8°16'41"	N81°57'00"W	25.98'



J-U-B ENGINEERS, INC.
 2760 W. Excursion Lane, Suite 400, Meridian, ID 83642
 p 208 376 7330 w www.jub.com
 JUB Project No. 10-19-149