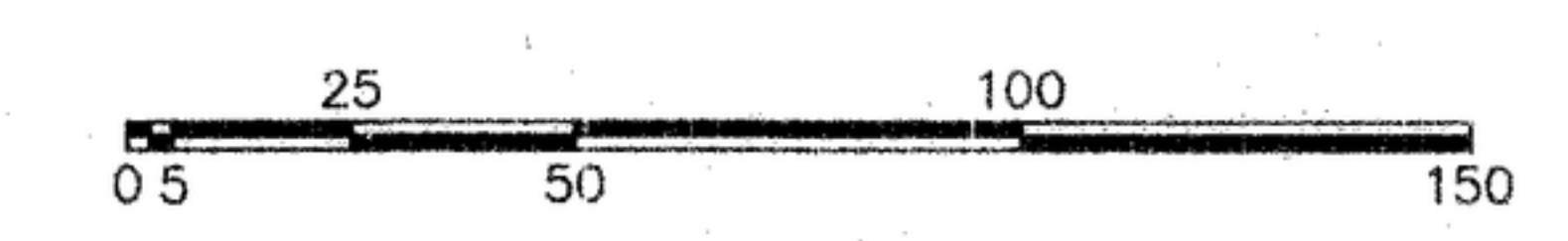
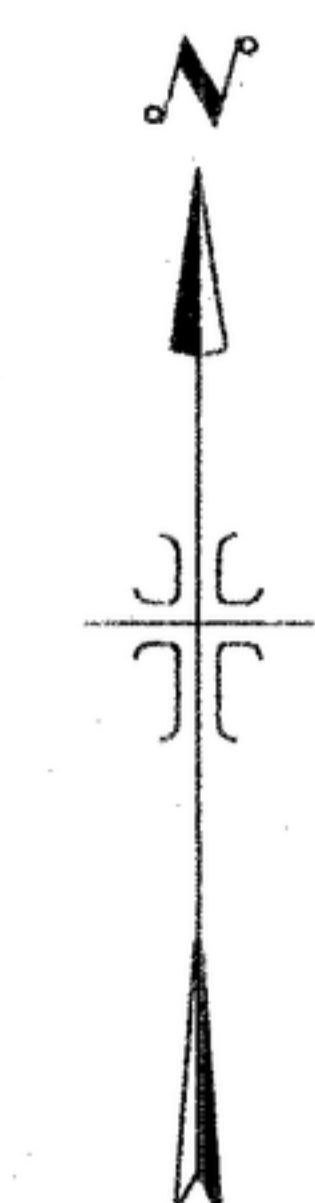
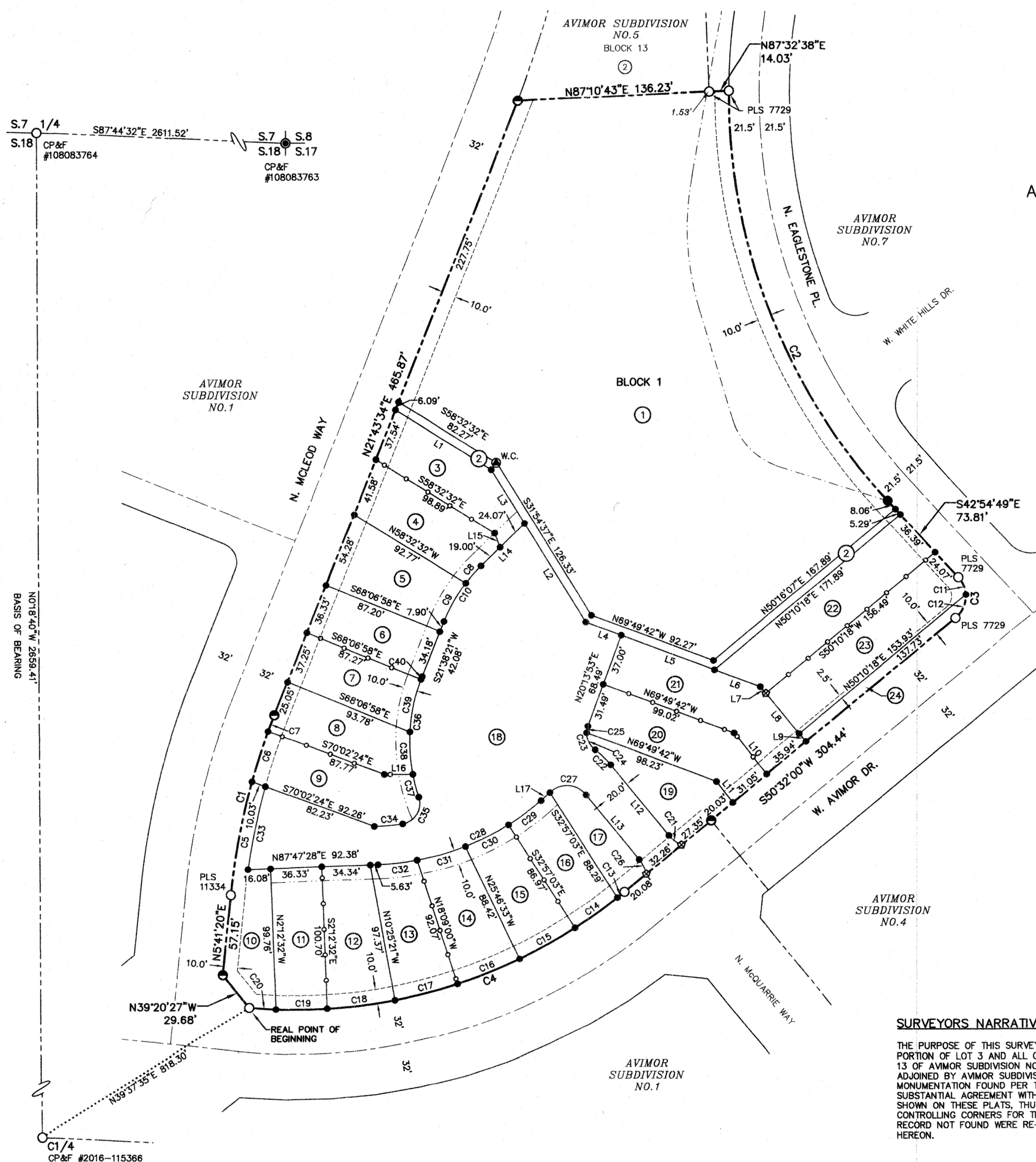


PLAT SHOWING AVIMOR VILLAGE CENTER SUBDIVISION NO. 1

A RE-SUBDIVISION OF A PORTION OF LOT 3, AND ALL OF LOTS 4 AND 5, BLOCK 13 OF AVIMOR SUBDIVISION NO. 5 AND LOCATED IN THE SW1/4 OF THE NE1/4 OF SECTION 18, T.5N., R.2E., B.M., ADA COUNTY, IDAHO 2022



SCALE: 1" = 50'

LEGEND

- FOUND 5/8" IRON PIN PLS 12459, UNLESS OTHERWISE NOTED
- FOUND ALUMINUM CAP MONUMENT
- FOUND 5/8" IRON PIN PLS 12459 DESTROYED DURING CONSTRUCTION. RESET WITH 5/8" IRON PIN WITH CAP PLS 7729
- SET 1/2" IRON PIN WITH CAP PLS 7729
- SET 5/8" IRON PIN WITH CAP PLS 7729
- SET 1" MAGNETICALLY DETECTABLE COPPER DISK MONUMENT
- SET 1/2" x 24" IRON PIN 1.0' WITNESS CORNER, NORTHWEST, WITH PLASTIC CAP, PLS 7729 WC
- △ CALCULATED POINT
- SUBDIVISION BOUNDARY LINE
- LOT LINE
- SECTION LINE
- RIGHT-OF-WAY LINE
- CENTERLINE
- ZERO SETBACK LOT LINE
- TIE LINE
- EASEMENT LINE--SEE NOTE 18
- PUBLIC UTILITIES EASEMENT LINE PER AVIMOR SUBDIVISION NO. 5
- ACHD SLOPE EASEMENT INST. NO. 2018-082437--SEE NOTE 16
- ⑦ LOT NUMBER

SEE SHEET 2 FOR ADDITIONAL EASEMENT INFORMATION

SURVEYORS NARRATIVE:

THE PURPOSE OF THIS SURVEY IS TO RE-SUBDIVIDE A PORTION OF LOT 3 AND ALL OF LOTS 4 AND 5, BLOCK 13 OF AVIMOR SUBDIVISION NO. 5. THIS PARCEL IS ADJOINED BY AVIMOR SUBDIVISION NO. 1, 4 AND 7. MONUMENTATION FOUND PER THESE PLATS ARE IN SUBSTANTIAL AGREEMENT WITH THE MONUMENTATION SHOWN ON THESE PLATS, THUS WERE HELD AS CONTROLLING CORNERS FOR THIS PLAT. PINS OF RECORD NOT FOUND WERE RE-MONUMENTED AS NOTED HEREON.



ISG IDAHO SURVEY GROUP, LLC
 9955 W. EMERALD ST.
 BOISE, IDAHO 83704
 (208) 846-8570