

PLAT OF Falcon Crest Clubhouse Subdivision

Situate in the Northwest Quarter of
Section 22, Township 2 North, Range 1 East, Boise Meridian,
City of Kuna, Ada County, Idaho.
2023

21 22

[7729]
Quarter Corner
2" Aluminum Cap
CP&F 2015-114814

Robinhood
Subd. No. 1

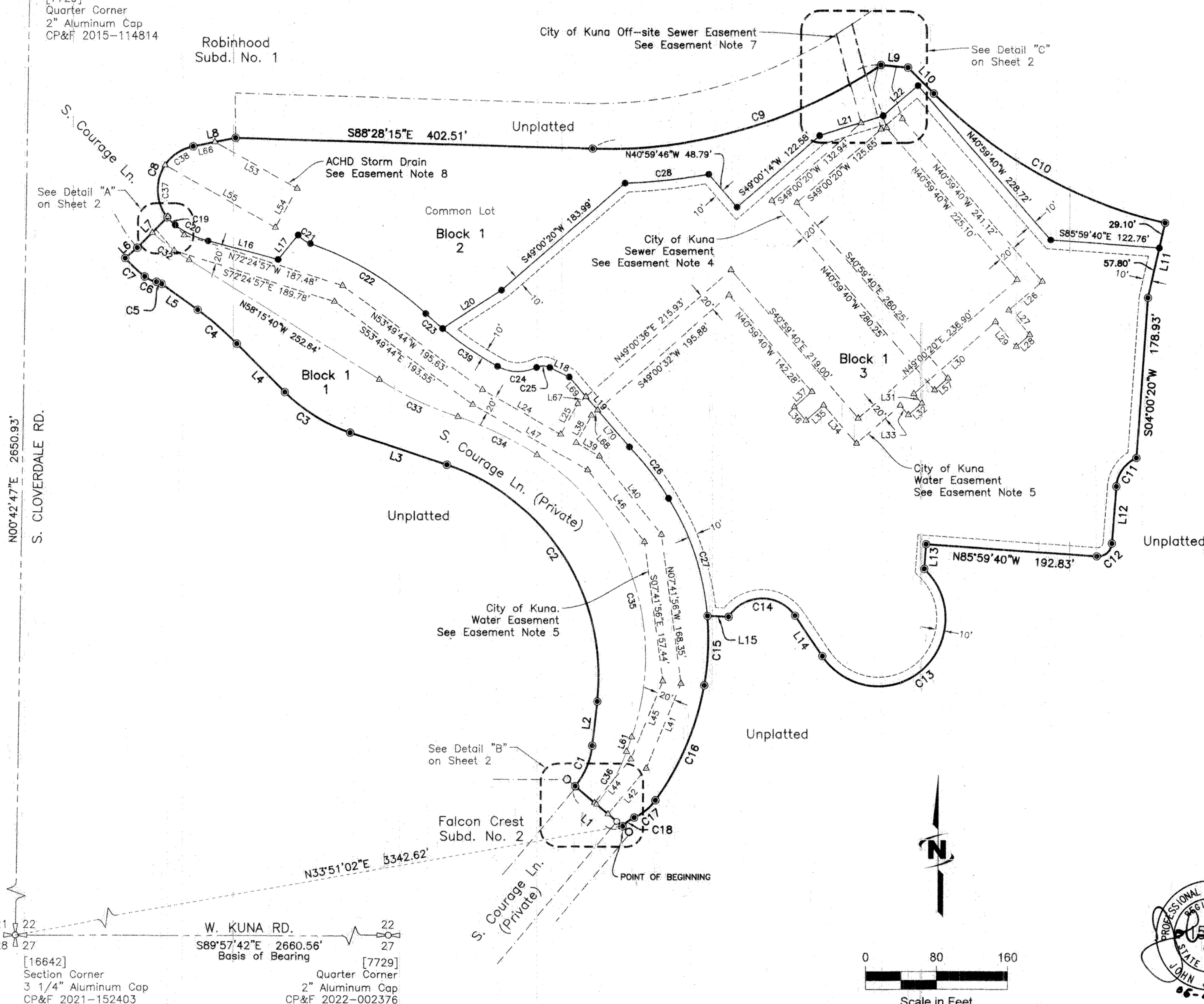
City of Kuna Off-site Sewer Easement
See Easement Note 7

See Detail "C"
on Sheet 2

Legend

- Subdivision Boundary Line
- Lot Line
- Section Line
- Adjacent Property Line
- Tie Line
- Kuna Sewer Easement Line
- Kuna Water Easement Line
- Utility Easement Line

- Section Corner, as noted
- Quarter-Section Corner, as noted
- Found 1/2" Rebar, with Plastic Cap Marked "J-U-B 15528"
- Found 5/8" Rebar, with Plastic Cap Marked "J-U-B 15528"
- Found 5/8" Rebar, with Plastic Cap Marked "J-U-B 16642"
- Found 1/2" Rebar, with Plastic Cap Marked "J-U-B 16642"
- Dimension Point
- C# - Curve Number (Typical)
- L# - Course Number (Typical)
- # - Lot Number (Typical)
- [####] - PLS Number Found on Monument



N00°42'47"E 2650.93'
S. CLOVERDALE RD.

21 22
28 27

W. KUNA RD.
S89°57'42"E 2660.56'
Basis of Bearing

[16642]
Section Corner
3 1/4" Aluminum Cap
CP&F 2021-152403

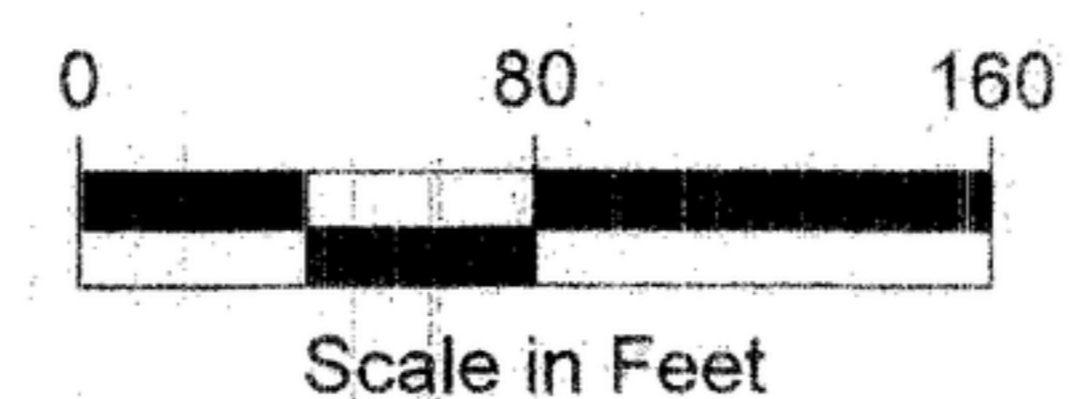
[7729]
Quarter Corner
2" Aluminum Cap
CP&F 2022-002376

See Detail "B"
on Sheet 2

Falcon Crest
Subd. No. 2

S. Courage Ln.
(Private)

POINT OF BEGINNING



J-U-B ENGINEERS, INC.

2760 West Excursion Lane, Suite 400, Meridian, ID 83642-5313
p 208 376 7330 w www.jub.com

C:\Temp\Pub\10-21-2023_1-PP.dwg, 05/31/23 01:50:58pm, sgrate

SEE SHEET 2 FOR LINE TABLES, CURVE TABLES, AND DETAILS.
SEE SHEET 3 FOR NOTES, EASEMENT NOTES, REFERENCE DOCUMENTS, AND SURVEYOR'S NARRATIVE.