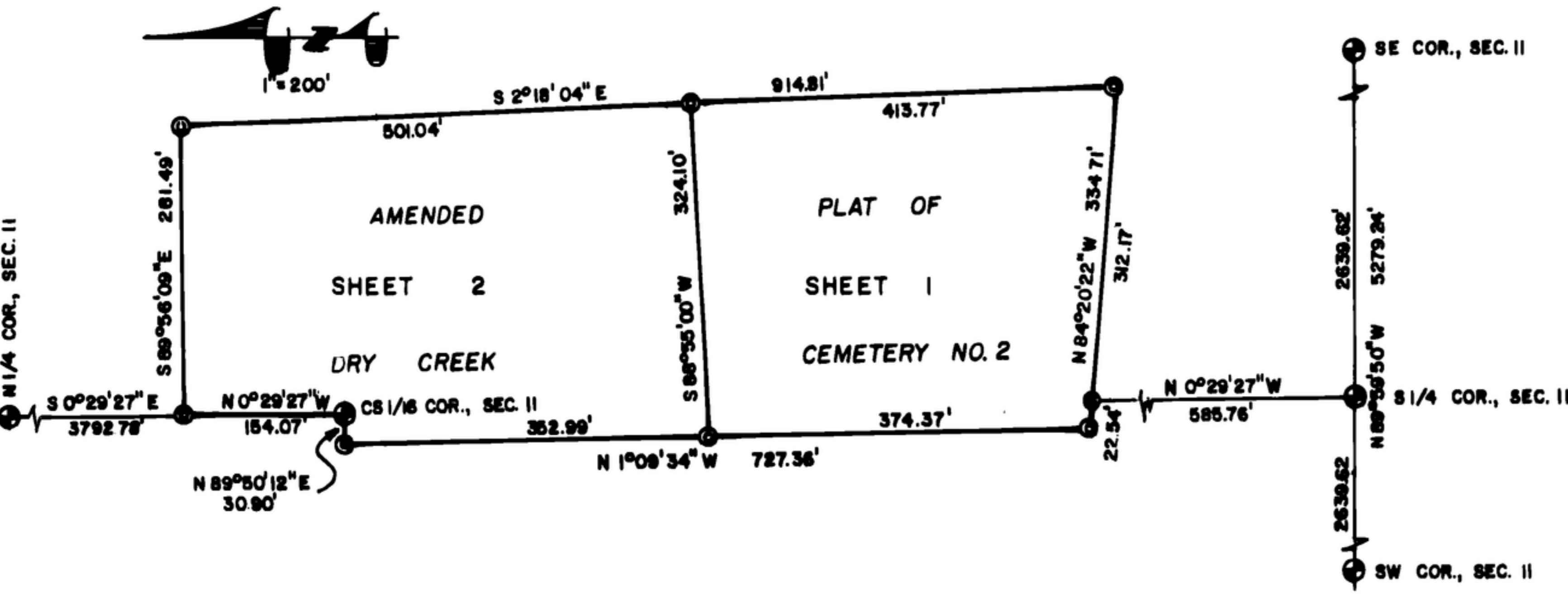


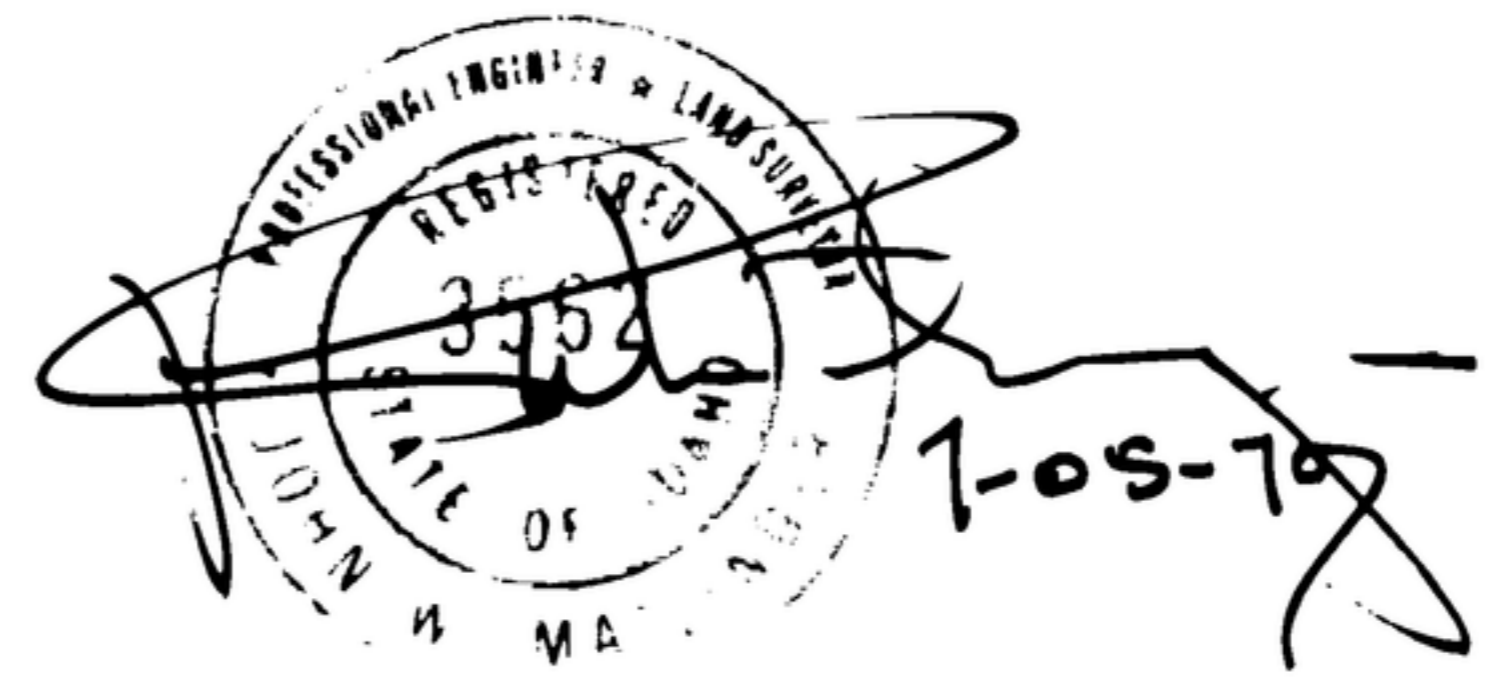
AMENDED PLAT OF DRY CREEK CEMETERY NO. 2

LOCATED IN PART OF THE SE 1/4 - SW 1/4,
AND PART OF THE W 1/2 - SE 1/4, SECTION II,
T.4N-R.1E., BM, ADA COUNTY, IDAHO.

VICINITY MAP

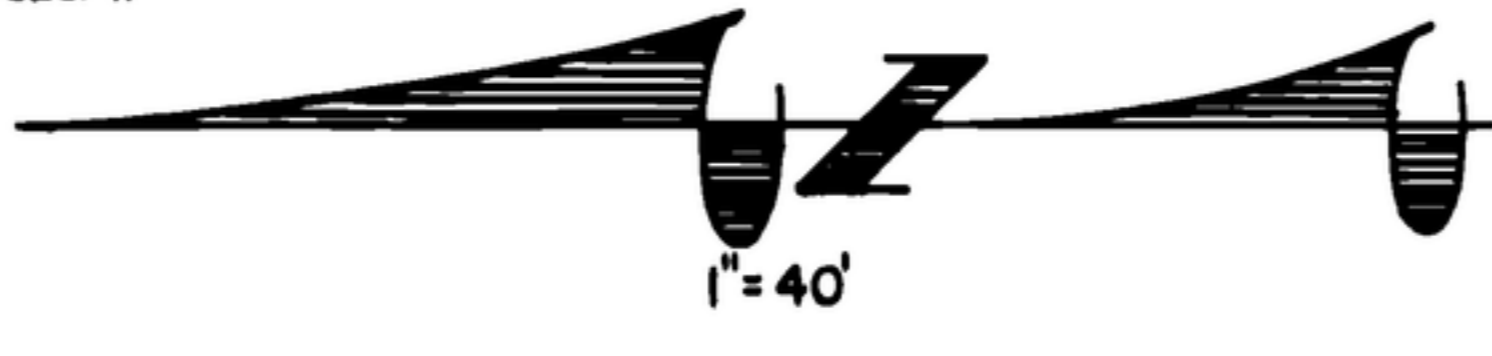


CTM ENGINEERING
2500 KOOTENAI STREET
BOISE, IDAHO



LEGEND

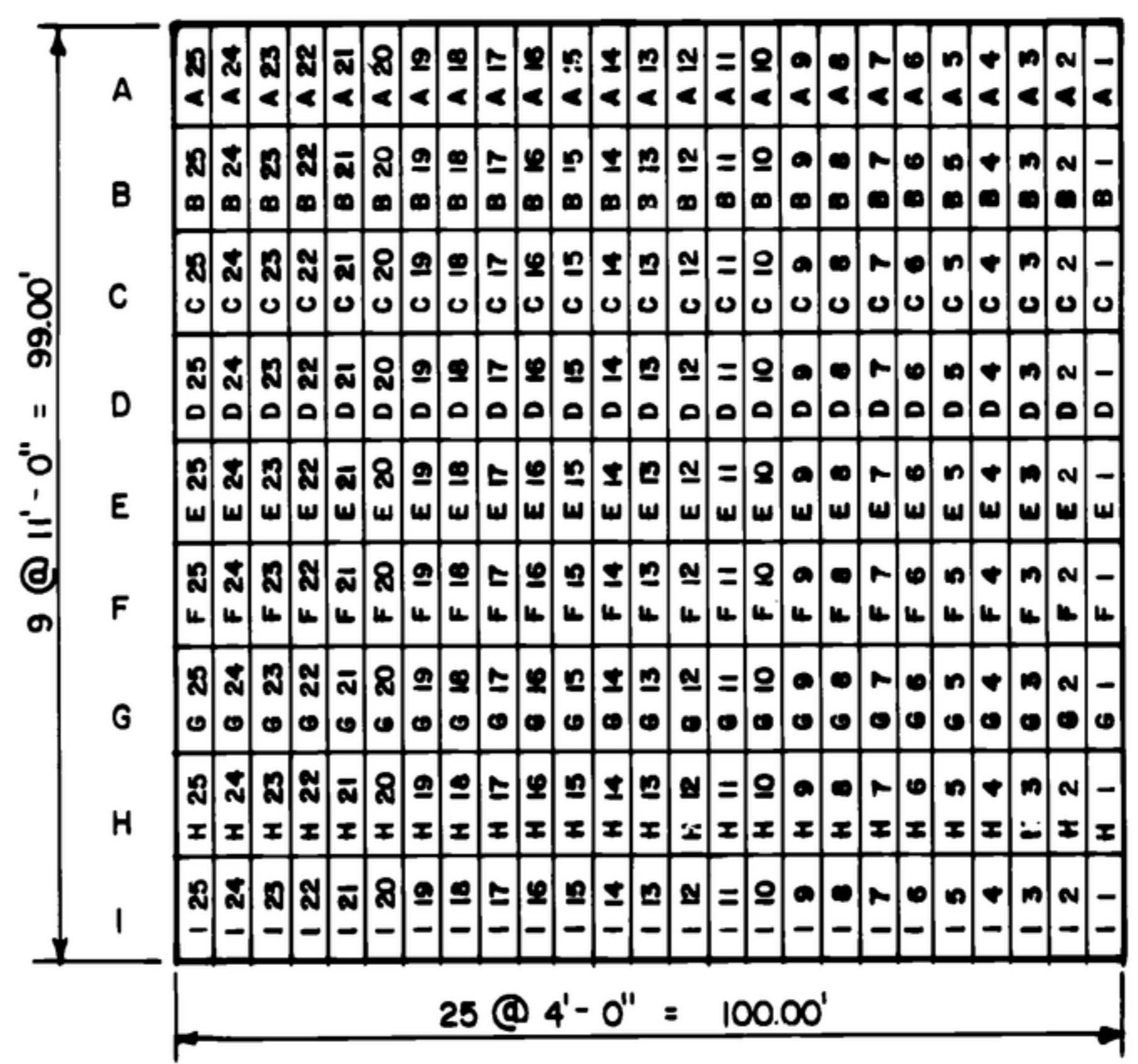
- ⊙ 5/8" x 30" STEEL BAR AT ANGLE POINTS ON BOUNDARY.
- 1/2" x 24" STEEL BAR AT ALL BLOCK CORNERS AND POINTS OF CURVATURE.
- 21 BLOCK NUMBER
- EDGE OF BANK
- ⊕ BRASS CAP



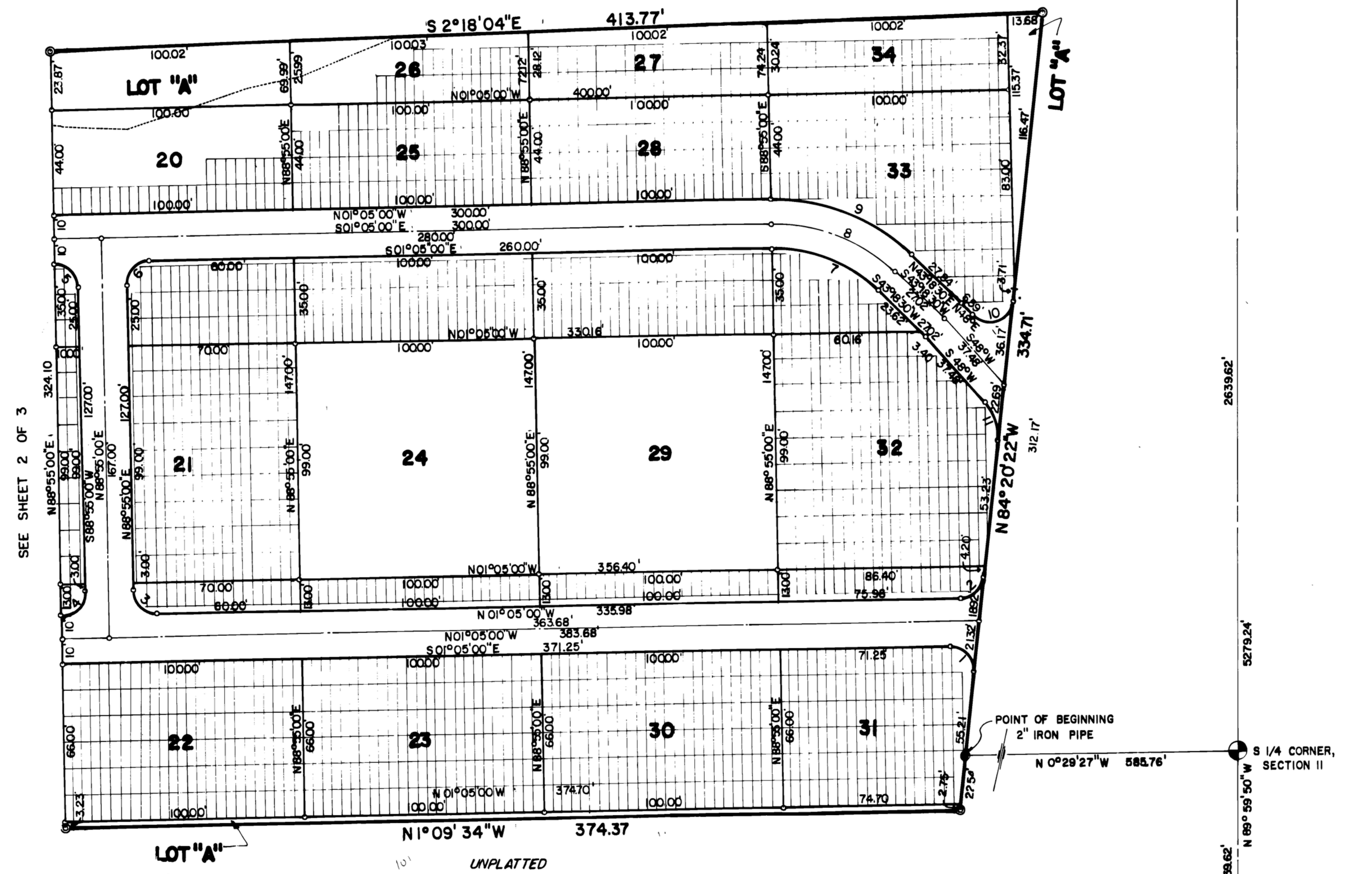
UNPLATTED

NOTES:

1. ROADS NOT DEDICATED TO THE PUBLIC.
2. GRAVE SIZE 4' x 11'
3. LANDSCAPING EASEMENT 2 FEET IN WIDTH ADJACENT TO ALL ROAD RIGHT OF WAY, GRAVE MARKERS PROHIBITED.
4. IN ALL PARTIAL BLOCKS GRAVE SITES ARE AS SHOWN.
5. ALL PLATTED AREAS NOT USED AS GRAVE SITES, LOT A, OR STREETS ARE TO BE LANDSCAPE AREAS.
6. BEARINGS ARE REFERENCE TO THE SOUTH LINE OF SECTION II, T.4N, R.1E., BM. ASSUMED TO BEAR N 89° 59' 50" W.



TYPICAL BLOCK DETAIL



CURVE TABLE

CURVE	CENTRAL ANGLE	RADIUS	LENGTH	TANGENT	LONG CHORD DISTANCE	BEARING
1	147° 00' 00"	10.00	16.89'	11.25'	14.95'	N 47° 17' 19" E
2	83° 15' 22"	10.00	14.53'	8.89'	13.29'	N 42° 42' 41" W
3	90° 00' 00"	10.00	15.71'	10.00'	14.14'	S 43° 05' 00" W
4	90° 00' 00"	10.00	15.71'	10.00'	14.14'	N 46° 05' 00" W
5	90° 00' 00"	10.00	15.71'	10.00'	14.14'	S 43° 55' 00" W
6	90° 00' 00"	10.00	15.71'	10.00'	14.14'	N 46° 05' 00" W
7	44° 23' 30"	62.72	48.59'	25.59'	47.38'	N 21° 06' 44" E
8	44° 23' 30"	72.72	56.34'	29.59'	54.94'	S 21° 06' 44" W
9	44° 23' 31"	82.72	64.03'	33.75'	62.50'	S 21° 06' 45" W
10	132° 20' 23"	10.00	23.10'	22.64'	18.30'	N 18° 10' 10" W
11	47° 39' 38"	20.74	17.25'	9.16'	16.76'	S 71° 49' 51" W

THIS INSTRUMENT WAS DRAFTED BY *[Signature]*