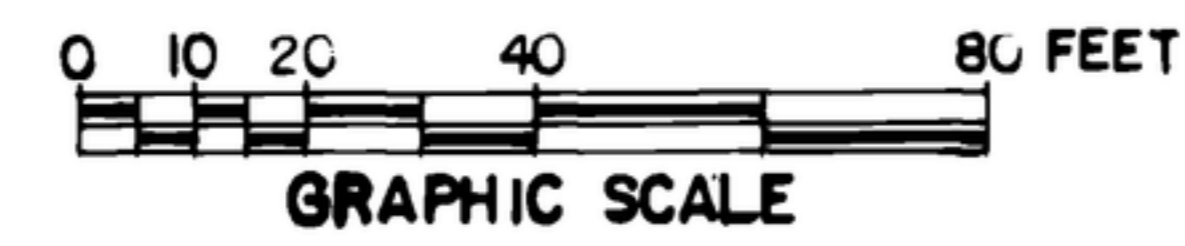
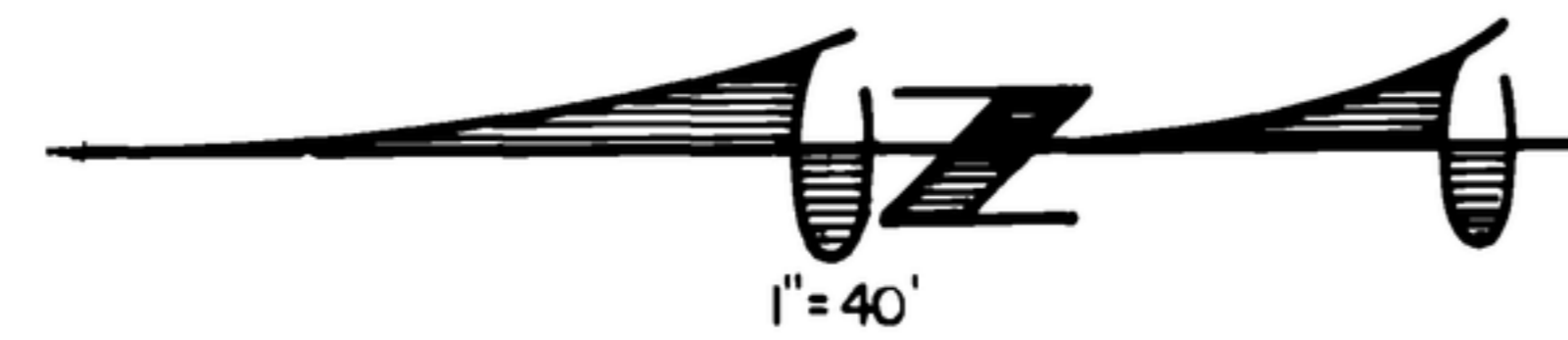


AMENDED PLAT OF DRY CREEK CEMETERY NO.2

LOCATED IN PART OF THE SE 1/4 - SW 1/4,
AND PART OF THE W 1/2 - SE 1/4, SECTION 11,
T.4N. R.1E., B.M., ADA COUNTY, IDAHO.

PREPARED BY
CTM ENGINEERING
2500 KOOTENAI STREET
BOISE, IDAHO
1979



UNPLATTED

LEGEND

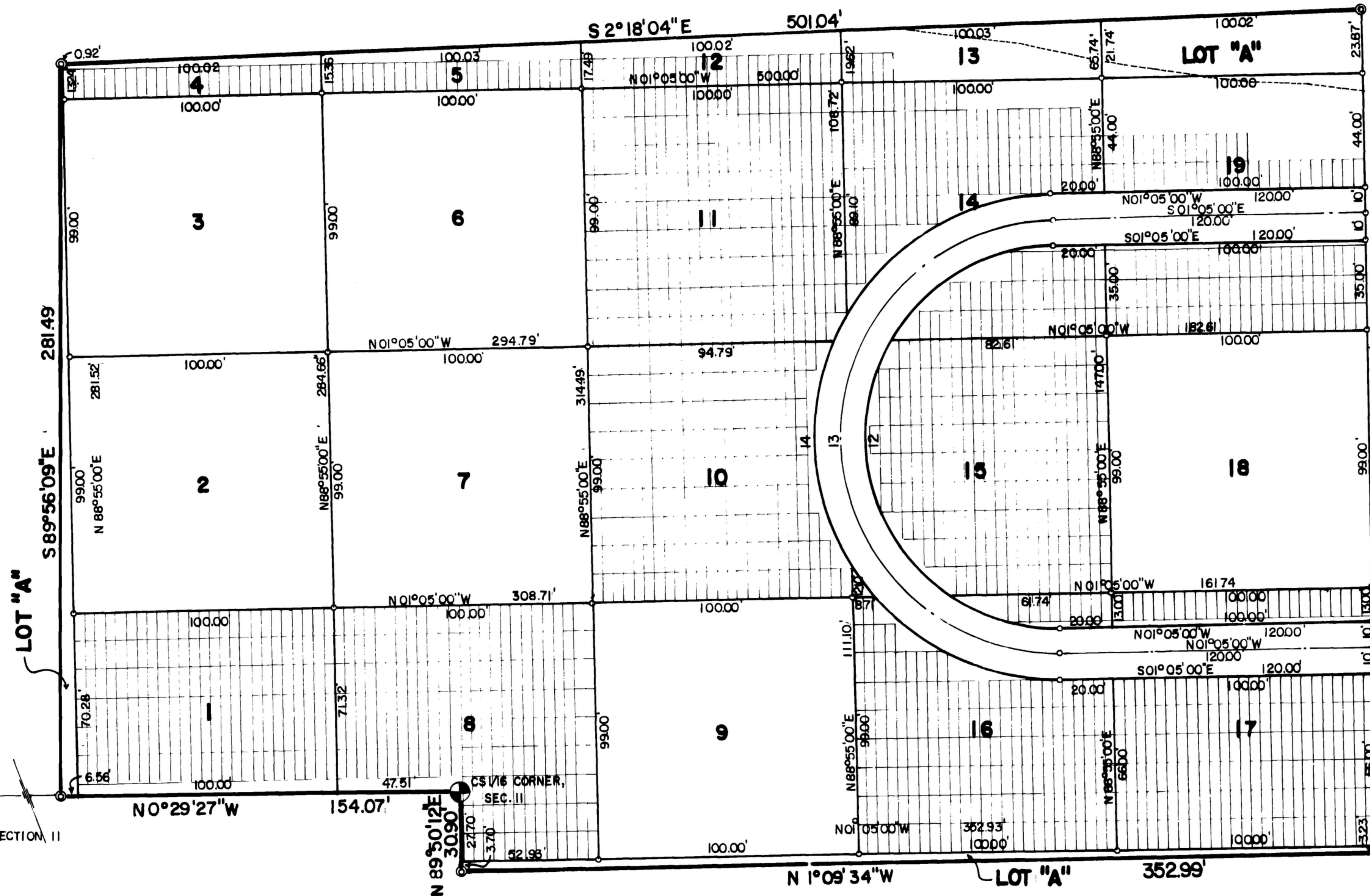
- ⊙ = 5/8" x 30" STEEL BAR AT ANGLE POINTS ON BOUNDARY
- = 1/2" x 24" STEEL BAR AT ALL BLOCK CORNERS AND POINTS OF CURVATURE.
- ⊕ = BRASS CAP
- 3 = BLOCK NUMBER
- = EDGE OF BANK

NOTES:

1. ROADS NOT DEDICATED TO THE PUBLIC.
2. GRAVE SIZE 4' x 11'
3. LANDSCAPING EASEMENT 2 FEET IN WIDTH ADJACENT TO ALL ROAD RIGHT OF WAY, GRAVE MARKERS PROHIBITED.
4. IN ALL PARTIAL BLOCKS GRAVE SITES ARE AS SHOWN.
5. ALL PLATTED AREAS NOT USED AS GRAVE SITES, LOT A, OR STREETS ARE TO BE LANDSCAPE AREAS.
- 6) BEARINGS ARE REFERENCE TO THE SOUTH LINE OF SECTION 11 T.4N.-R.1E. B.M. ASSUMED TO BEAR N 89°59'50"W

CURVE TABLE

CURVE	CENTRAL ANGLE	RADIUS	LENGTH	TANGENT	LONG CHORD DISTANCE	LONG CHORD BEARING
12	180°00'00"	73.50'	230.91'	0.00'	147.00'	N 88°55'00"E
13	180°00'00"	83.50'	262.32'	0.00'	167.00'	N 88°55'00"E
14	180°00'00"	93.50'	293.74'	0.00'	187.00'	N 88°55'00"E



SEE SHEET 1 OF 2

UNPLATTED