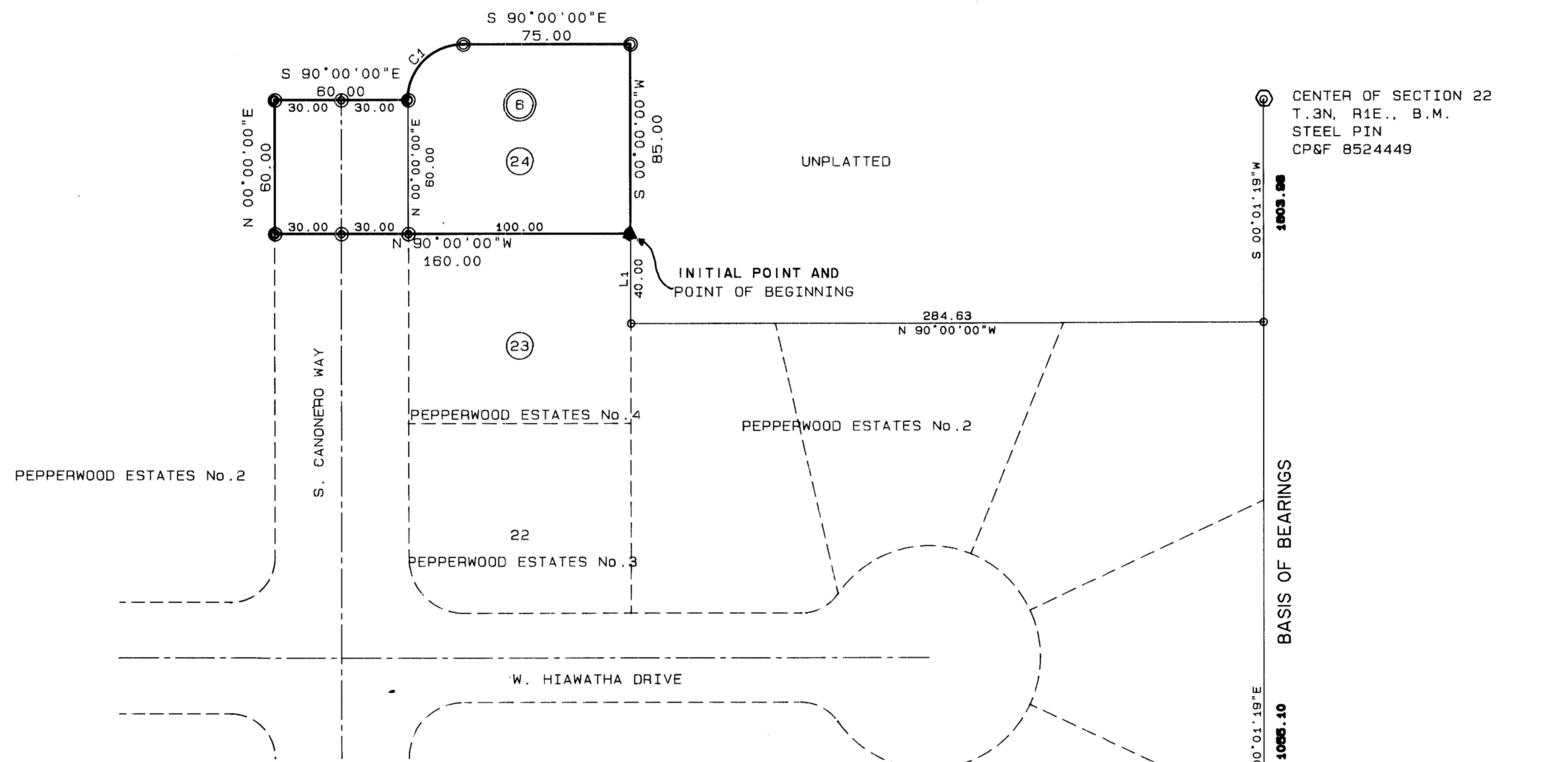


PEPPERWOOD ESTATES NO. 5

A PORTION OF THE SW 1/4 OF SECTION 22 T.3N., R.1E.
BOISE MERIDIAN, ADA COUNTY, IDAHO

COLLINS ENGINEERING 1989



NOTES:

BUILDING SETBACKS
BUILDING SETBACKS IN THIS SUBDIVISION SHALL BE IN COMPLIANCE WITH THE APPLICABLE ZONING REGULATIONS IN EFFECT AT THE TIME OF BUILDING PERMIT ISSUANCE.

EASEMENTS
ALL LOTS HAVE A 10 FOOT WIDE EASEMENT CONTIGUOUS TO ALL STREETS AND REAR LOT LINES FOR PUBLIC UTILITIES, DRAINAGE, AND IRRIGATION PURPOSES. SIDE LOT LINES HAVE A 5 FOOT WIDE EASEMENT FOR THE INTERMOUNTAIN GAS COMPANY.

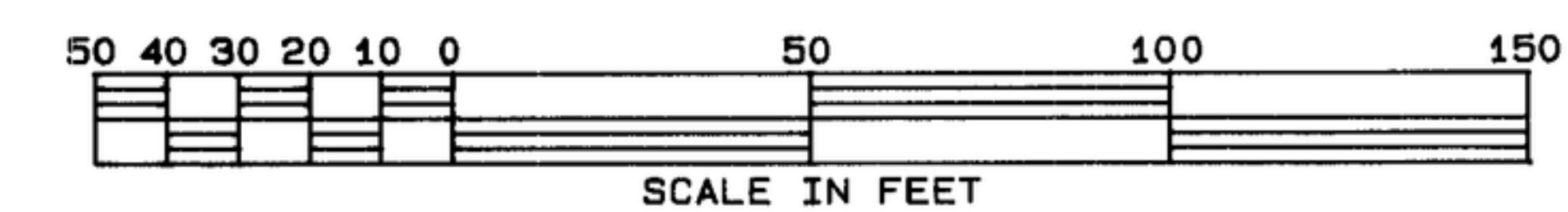
BEARING	DISTANCE
1 N 00°00'00"E	40.00

CURVE	DELTA	RADIUS	ARC	TANGENT	CHORD	CHORD BRG
1	90°00'00"	25.00	38.27	25.00	35.36	N 45°00'00"E

- LEGEND**
- LAND CORNER
 - ▲ 2"x36" PIPE W/ALUM. CAP
 - ⊙ 5/8"x30" PIN (FOUND=SOLID / SET=OPEN)
 - 1/2"x24" PIN (FOUND=SOLID / SET=OPEN)
 - ① LOT NUMBER
 - ② BLOCK NUMBER

SANITARY RESTRICTIONS IN FORCE:

Signature: *Lea G. Kelly*
 ADA COUNTY DEPARTMENT OF REGISTERED PROFESSIONALS
 DATE: 6/14/89



⊙ CENTER OF SECTION 22
T.3N, R1E., B.M.
STEEL PIN
CP&F 8524449

⊙ SOUTH 1/4 CORNER
SECTION 22 T.3N, R.1E., B.M.
BRASS CAP
CP&F 8524448