

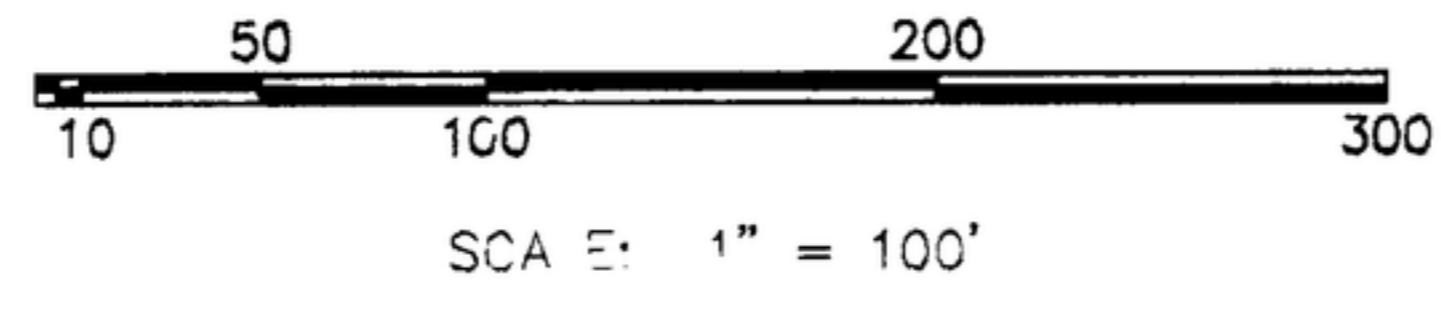
PLAT COPY

BOULDER HEIGHTS SUBDIVISION

A PORTION OF
THE N 1/2 OF SECTION 19, T.3N., R.3E., B.M.,
ADA COUNTY, IDAHO

J.H. WISE & SON INC.
LAND DEVELOPER - OWNER
BOISE, IDAHO

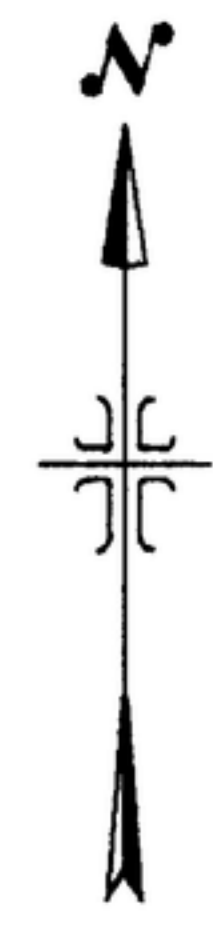
1993



Inste. # 9336798

Filed for record at the request of J.H. Wise & Son Inc.
33 Min. past 11 o'clock A.M. this 17th day of MAY 1993
J. DAVID NAVARRO, Recorder

By Jacobson Deputy
Fee 11.00

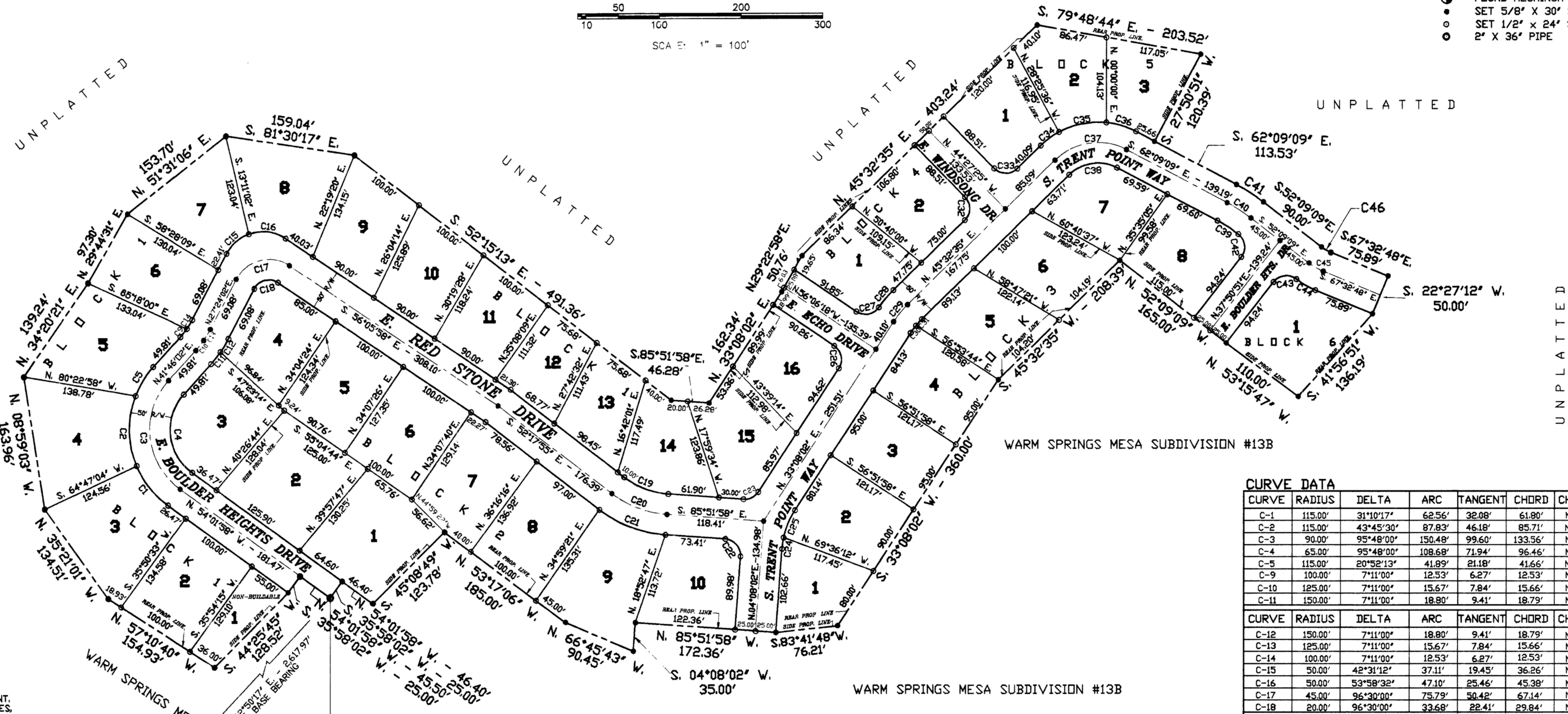


LEGEND

- FOUND BRASS CAP
- FOUND ALUMINUM MONUMENT
- SET 5/8" X 30" STEEL ROD
- SET 1/2" X 24" STEEL ROD
- 2" X 36" PIPE

CERTIFICATE OF COUNTY SURVEYOR
I, JOHN E. PRIESTER, DO HEREBY CERTIFY THAT I HAVE REVIEWED AND
APPROVED THE PLAT COPY OF THIS SUBDIVISION

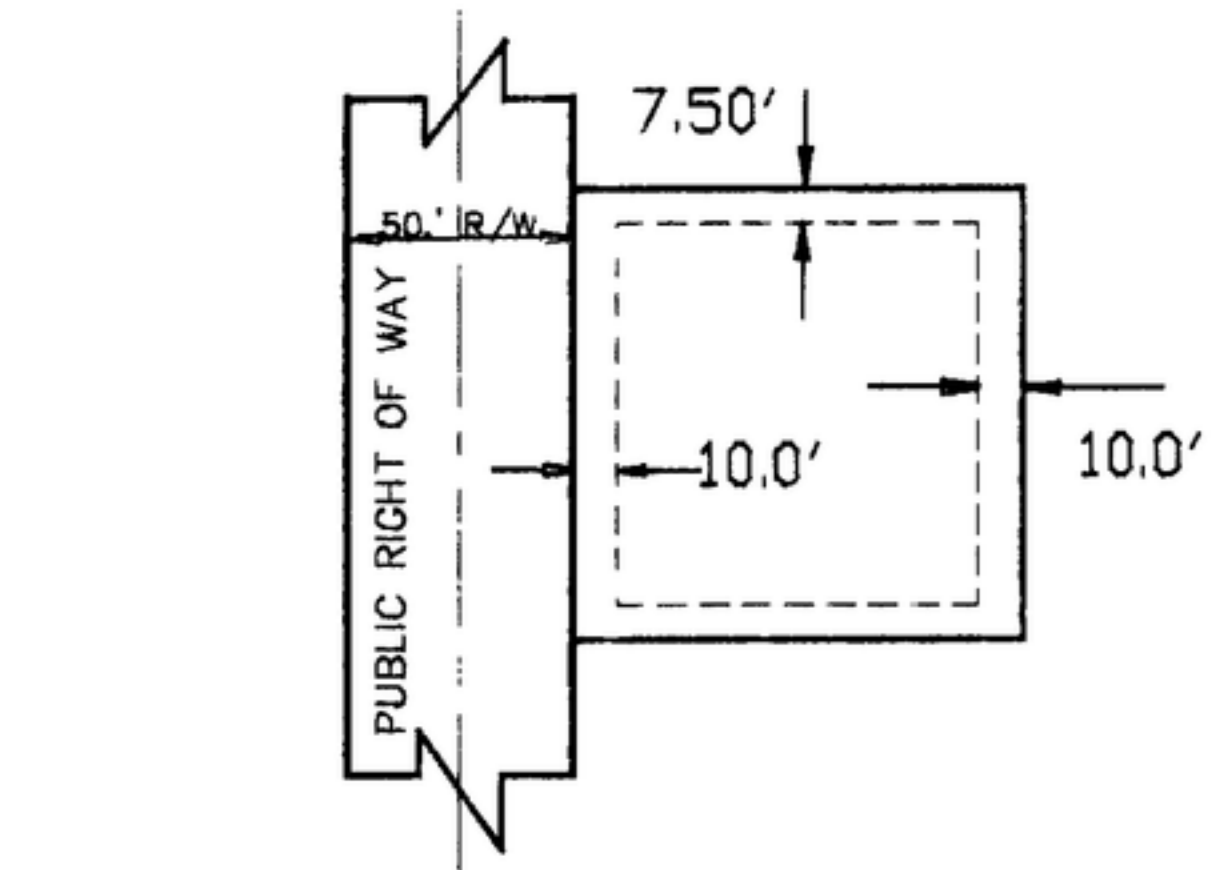
JOHN E. PRIESTER, P.E.



NOTE: THIS SUBDIVISION IS NOT WITHIN AN IRRIGATION DISTRICT.

NOTE: ALL LOT LINES COMMON TO A PUBLIC RIGHT OF WAY HAVE BOISE CITY STREET LIGHTING EASEMENT. ALL LOT LINES HAVE PERMANENT PUBLIC UTILITIES, DRAINAGE, SANITARY SEWER EASEMENT.

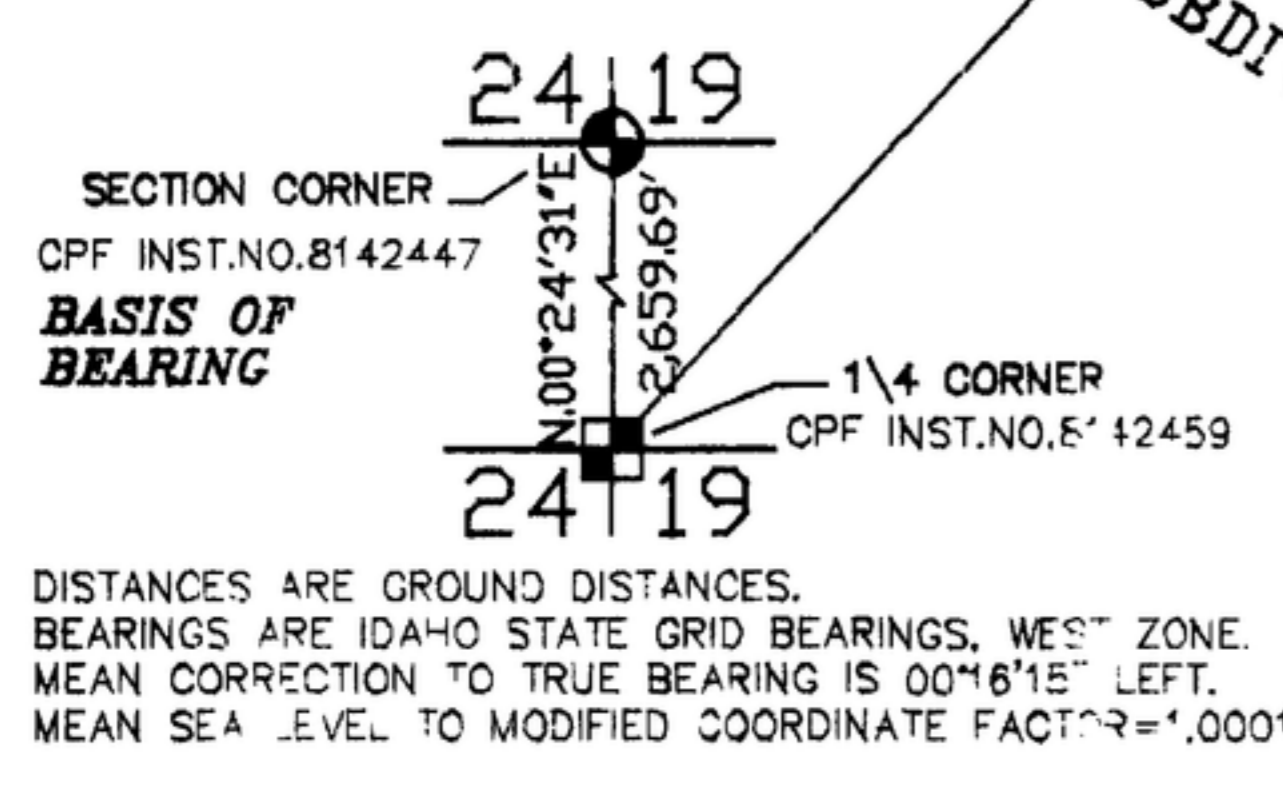
TYPICAL OF ALL LOTS:
10.0' FRONT PROPERTY LINE.
7.5' SIDE PROPERTY LINE.
10.0' REAR PROPERTY LINE.



NOTE: ABOVE EASEMENTS INCLUDE SIGN EASEMENT LOCATED BETWEEN LOTS 1, 2 BLOCK 2, WITHIN THE 10' FRONT EASEMENT.

NOTE: ROOF COVERING-UL CLASS A RATING - 30 YEAR MINIMUM LIFE.

NOTE: BUILDING SETBACKS AND DIMENSIONAL STANDARDS IN THIS SUBDIVISION SHALL BE IN COMPLIANCE WITH THE APPLICABLE ZONING REGULATIONS OF ADA COUNTY. ANY RE-SUBDIVISION OF THIS PLAT SHALL COMPLY WITH THE APPLICABLE ZONING REGULATIONS IN EFFECT AT THE TIME OF THE RE-SUBDIVISION.



6/8" FOUND MONUMENT - RESET WITH 2" x 36" PIPE.
INITIAL POINT MONUMENT.

WARM SPRINGS MESA SUBDIVISION #13A

WARM SPRINGS MESA SUBDIVISION #13B

WARM SPRINGS MESA SUBDIVISION #13B

CURVE DATA

CURVE	RADIUS	DELTA	ARC	TANGENT	CHORD	CHORD BEARING
C-1	115.00'	31°10'17"	62.56'	32.08'	61.80'	N. 38°26'50" W.
C-2	115.00'	43°45'30"	87.83'	46.18'	85.71'	N. 0°58'56" W.
C-3	90.00'	95°48'00"	150.48'	99.60'	133.56'	N. 06°07'58" W.
C-4	65.00'	95°48'00"	108.68'	71.94'	96.46'	N. 06°07'58" W.
C-5	115.00'	20°52'13"	41.89'	21.18'	43.66'	N. 31°19'56" E.
C-9	100.00'	7°11'00"	12.53'	6.27'	12.53'	N. 38°10'32" E.
C-10	125.00'	7°11'00"	15.67'	7.84'	15.66'	N. 38°10'32" E.
C-11	150.00'	7°11'00"	18.80'	9.41'	18.79'	N. 38°10'32" E.

CURVE	RADIUS	DELTA	ARC	TANGENT	CHORD	CHORD BEARING
C-12	150.00'	7°11'00"	18.80'	9.41'	18.79'	N. 30°59'32" E.
C-13	125.00'	7°11'00"	15.67'	7.84'	15.66'	N. 30°59'32" E.
C-14	100.00'	7°11'00"	12.53'	6.27'	12.53'	N. 30°59'32" E.
C-15	50.00'	42°31'12"	37.11'	19.45'	36.26'	N. 48°39'46" E.
C-16	50.00'	53°58'32"	47.10'	25.46'	45.38'	N. 83°05'14" W.
C-17	45.00'	96°30'00"	75.79'	50.42'	67.14'	N. 75°39'02" E.
C-18	20.00'	96°30'00"	33.68'	22.41'	29.84'	N. 75°39'02" E.

CURVE	RADIUS	DELTA	ARC	TANGENT	CHORD	CHORD BEARING
C-19	100.00'	33°34'03"	58.59'	30.16'	57.75'	S. 69°04'56" E.
C-20	125.00'	33°34'03"	73.23'	37.70'	72.19'	S. 69°04'56" E.
C-21	150.00'	33°34'03"	87.88'	45.24'	86.63'	S. 69°04'56" E.
C-22	20.00'	90°00'00"	31.42'	20.00'	28.28'	N. 40°51'58" W.
C-23	20.00'	61°00'00"	21.29'	11.78'	20.30'	N. 63°38'02" E.
C-24	100.00'	8°02'29"	14.03'	7.03'	14.02'	N. 8°09'16" E.
C-25	100.00'	20°57'31"	36.58'	18.50'	36.38'	N. 22°33'16" E.

CURVE	RADIUS	DELTA	ARC	TANGENT	CHORD	CHORD BEARING
C-26	20.00'	89°14'20"	31.15'	19.74'	28.10'	N. 11°29'08" E.
C-27	20.00'	91°05'36"	31.03'	20.18'	28.01'	N. 79°26'30" E.
C-28	150.00'	10°33'17"	27.63'	13.85'	27.59'	N. 40°15'56" E.
C-29	125.00'	12°24'33"	27.07'	13.59'	27.02'	N. 39°20'18" E.
C-30	100.00'	06°12'17"	10.83'	5.42'	10.82'	N. 36°14'10" E.
C-31	100.00'	06°12'17"	10.83'	5.42'	10.82'	N. 42°26'27" E.
C-32	20.00'	90°00'00"	31.42'	20.00'	28.28'	N. 00°32'35" E.
C-33	20.00'	90°00'00"	31.42'	20.00'	28.28'	N. 89°27'25" W.
C-34	100.00'	16°01'49"	27.98'	14.08'	27.89'	N. 53°33'29" E.
C-35	100.00'	34°25'29"	60.08'	30.98'	59.18'	N. 78°47'09" E.
C-36	100.00'	21°50'58"	38.13'	19.30'	37.90'	N. 73°04'38" W.
C-37	75.00'	72°18'16"	94.65'	54.80'	88.49'	N. 81°41'43" E.
C-38	50.00'	72°18'16"	63.10'	36.53'	58.99'	N. 81°41'43" E.
C-39	175.00'	10°00'00"	30.54'	15.31'	30.50'	S. 57°09'09" E.
C-40	200.00'	10°00'00"	34.91'	17.50'	34.86'	S. 57°09'09" E.
C-41	225.00'	10°00'00"	39.27'	19.68'	39.22'	S. 57°09'09" E.
C-42	20.00'	90°00'00"	31.42'	20.00'	28.28'	N. 07°09'09" W.
C-43	20.00'	90°00'00"	31.42'	20.00'	28.28'	N. 82°50'51" E.
C-44	100.00'	15°23'39"	26.87'	13.51'	26.79'	S. 59°50'59" E.
C-45	75.00'	15°23'39"	20.15'	9.73'	20.09'	S. 59°50'59" E.
C-46	50.00'	15°23'39"	13.43'	6.76'	13.39'	S. 59°50'59" E.

MONUMENT CERTIFICATE

I, PAUL W. WISE, HEREBY CERTIFY THAT ALL THE INTERIOR MONUMENTS FOR THIS SUBDIVISION WERE SET AS OF APRIL 12, 1993 IN ACCORDANCE WITH THE PROVISIONS OF IDAHO CODE 50-1331-1333. THE INITIAL PLAT WAS FILED AT THE OFFICE OF THE ADA COUNTY RECORDER IN BOOK 59 OF PLATS AT PAGES 5805-5806, INSTRUMENT NO. 9210283.

Paul W. Wise
PAUL W. WISE



PAUL W. WISE
CONSULTING ENGINEER
BOISE, IDAHO