

TOMLINSON SUBDIVISION / TOMLINSON CONDOMINIUMS PHASE 2

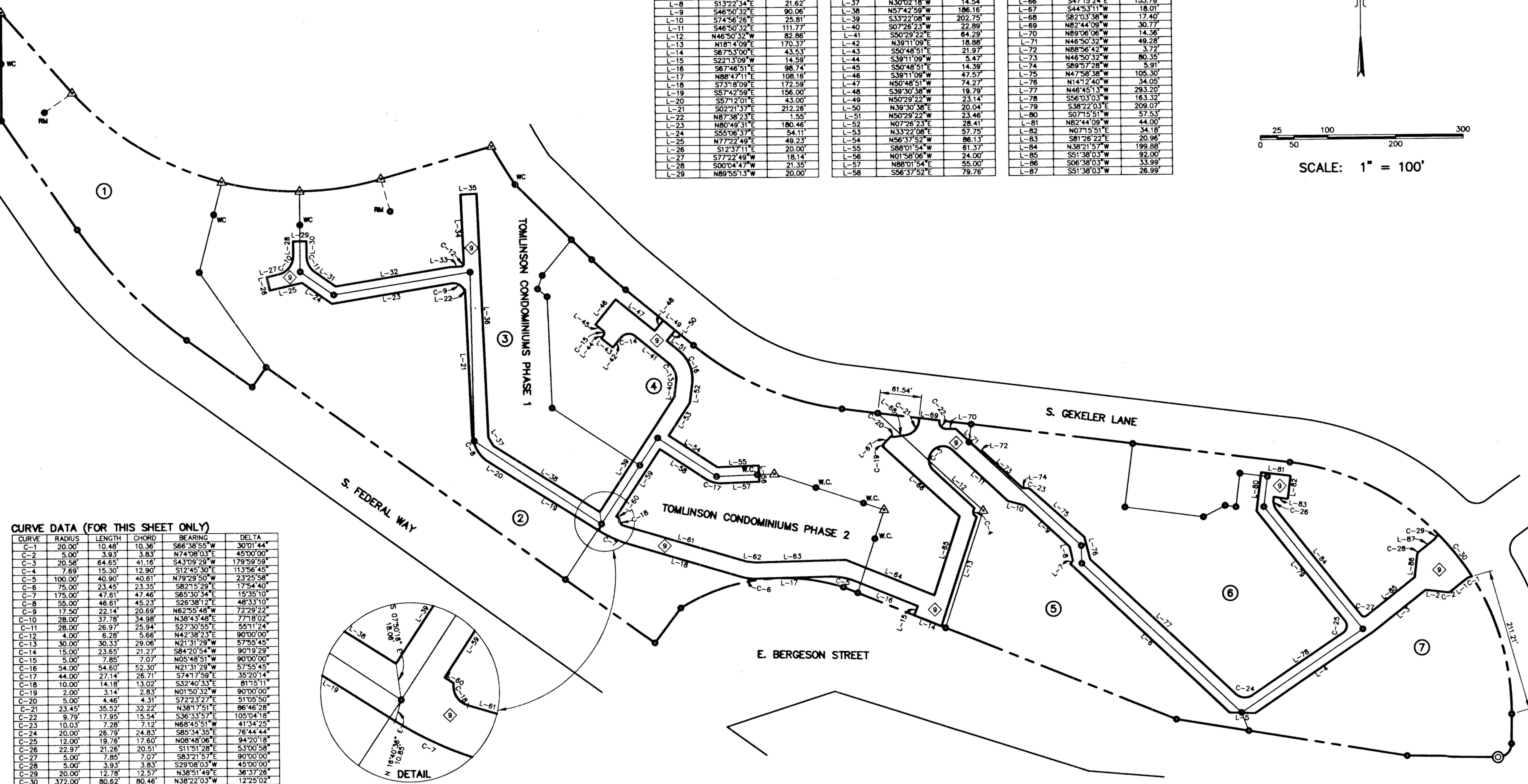
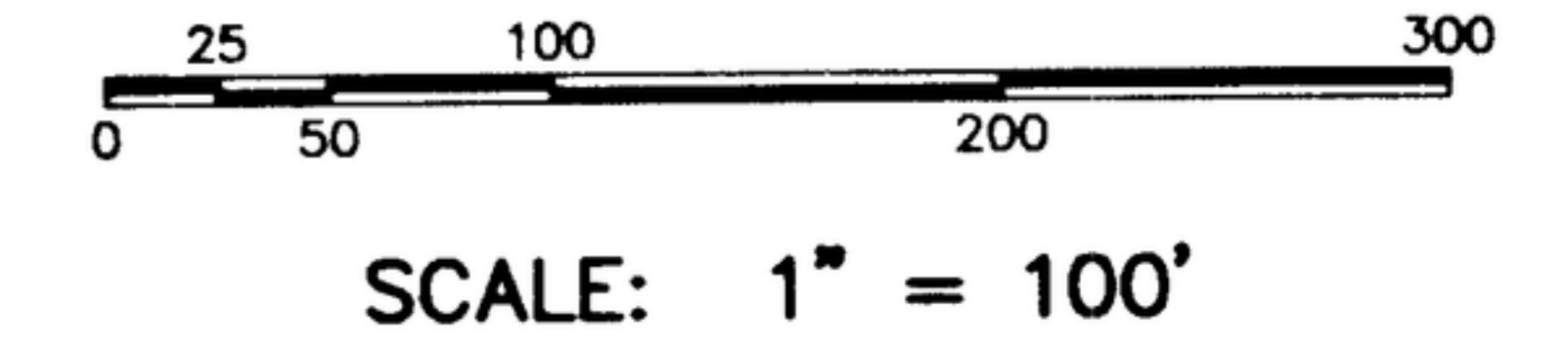
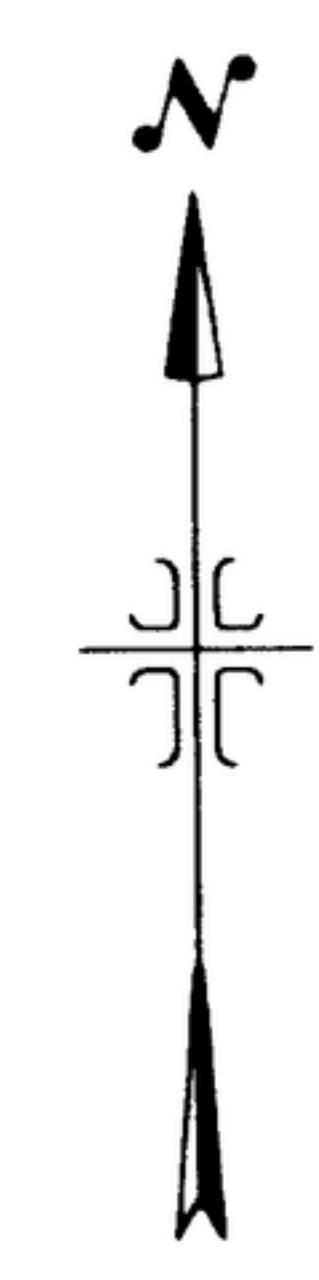
MUTUAL INGRESS - EGRESS EASEMENT LOCATION

LEGEND

- FOUND 5/8" IRON PIN, PLS 4431
- WC WITNESS CORNER
- RM REFERENCE MONUMENT
- △ CALCULATED POINT
- PROPERTY BOUNDARY - TOMLINSON SUBDIVISION
- ▭ INGRESS/EGRESS EASEMENT
- ④ LOT NUMBER
- ◇ INSTR. NO. MUTUAL INGRESS/EGRESS EASEMENT

LINE DATA (FOR THIS SHEET ONLY)

LINE	DIRECTION	DISTANCE	LINE	DIRECTION	DISTANCE	LINE	DIRECTION	DISTANCE
L-1	N51°38'03"E	29.24'	L-30	N00°04'47"E	22.42'	L-59	N33°22'08"E	119.06'
L-2	S83°21'57"E	32.91'	L-31	N55°06'37"W	37.62'	L-60	N56°37'52"W	5.24'
L-3	N51°38'03"E	98.88'	L-32	S80°51'52"W	173.31'	L-61	N73°18'09"W	189.45'
L-4	N55°58'09"E	212.63'	L-33	S87°38'23"W	16.00'	L-62	N83°49'35"W	13.53'
L-5	S88°19'02"E	37.84'	L-34	S02°21'37"E	102.29'	L-63	S88°47'11"W	133.88'
L-6	S46°31'30"E	322.49'	L-35	S87°38'23"W	24.00'	L-64	N67°46'51"W	141.25'
L-7	S43°28'30"W	6.02'	L-36	N02°21'37"W	360.58'	L-65	S18°14'09"W	122.76'
L-8	S13°22'34"E	21.62'	L-37	N30°02'18"W	14.54'	L-66	S47°15'24"E	153.78'
L-9	S46°50'32"E	90.06'	L-38	N57°42'59"W	186.16'	L-67	S44°53'11"W	18.01'
L-10	S74°56'26"E	25.81'	L-39	S33°22'08"W	202.75'	L-68	S82°03'38"W	17.40'
L-11	S46°50'32"E	111.77'	L-40	S07°26'23"W	22.89'	L-69	N82°44'09"W	30.77'
L-12	N46°50'32"W	82.86'	L-41	S50°29'22"E	64.29'	L-70	N89°06'06"W	14.36'
L-13	N18°14'09"E	170.37'	L-42	N39°11'09"E	18.88'	L-71	N46°50'32"W	49.28'
L-14	S67°33'00"E	43.53'	L-43	S50°48'51"E	21.97'	L-72	N88°56'42"W	3.72'
L-15	S22°33'09"W	14.59'	L-44	S39°11'09"W	5.47'	L-73	N46°50'32"W	80.35'
L-16	S67°46'51"E	98.74'	L-45	S50°48'51"E	14.39'	L-74	S89°57'28"W	5.91'
L-17	N88°47'11"E	108.16'	L-46	S39°11'09"W	47.57'	L-75	N47°58'38"W	105.30'
L-18	S73°18'09"E	172.59'	L-47	N50°48'51"W	74.27'	L-76	N14°12'40"W	34.05'
L-19	S57°42'59"E	156.00'	L-48	S39°30'38"W	19.79'	L-77	N46°45'13"W	293.20'
L-20	S57°12'01"E	43.00'	L-49	N50°29'22"W	23.14'	L-78	S56°03'03"W	163.32'
L-21	S02°21'37"E	212.26'	L-50	N39°30'38"E	20.04'	L-79	S38°22'03"E	209.07'
L-22	N87°38'23"E	1.55'	L-51	N50°29'22"W	23.46'	L-80	S07°15'51"W	57.53'
L-23	N80°49'31"E	180.46'	L-52	N07°26'23"E	28.41'	L-81	N82°44'09"W	44.00'
L-24	S55°06'37"E	54.11'	L-53	N33°22'08"E	57.75'	L-82	N07°15'51"E	34.18'
L-25	N77°22'49"E	49.23'	L-54	N56°37'52"W	86.13'	L-83	S81°26'22"E	20.96'
L-26	S12°37'11"E	20.00'	L-55	S88°01'54"W	61.37'	L-84	N38°21'57"W	199.88'
L-27	S77°22'49"W	18.14'	L-56	N01°58'06"W	24.00'	L-85	S51°38'03"W	92.00'
L-28	S00°04'47"W	21.35'	L-57	N88°01'54"E	55.00'	L-86	S06°38'03"W	33.99'
L-29	N89°55'13"W	20.00'	L-58	S56°37'52"E	79.76'	L-87	S51°38'03"W	26.99'



CURVE DATA (FOR THIS SHEET ONLY)

CURVE	RADIUS	LENGTH	CHORD	BEARING	DELTA
C-1	20.00'	10.48'	10.36'	S86°38'55"W	30°01'44"
C-2	5.00'	3.93'	3.83'	N74°08'03"E	45°00'00"
C-3	20.58'	64.85'	41.16'	S43°09'29"W	179°59'59"
C-4	7.69'	15.30'	12.90'	S12°45'30"E	113°56'45"
C-5	100.00'	40.90'	40.61'	N79°29'50"W	23°25'58"
C-6	75.00'	23.45'	23.35'	S82°15'29"E	17°54'40"
C-7	175.00'	47.61'	47.46'	S65°30'34"E	15°35'10"
C-8	55.00'	46.61'	45.23'	S28°38'12"E	48°33'10"
C-9	17.50'	22.14'	20.69'	N62°55'48"W	72°29'22"
C-10	28.00'	37.78'	34.98'	N38°43'48"E	77°18'02"
C-11	28.00'	26.97'	25.94'	S27°30'55"E	55°11'24"
C-12	4.00'	6.28'	5.66'	N42°38'23"E	90°00'00"
C-13	30.00'	30.33'	29.06'	N21°31'29"W	57°55'45"
C-14	15.00'	23.65'	21.27'	S84°20'54"W	90°19'29"
C-15	5.00'	7.85'	7.07'	N05°48'51"W	90°00'00"
C-16	54.00'	54.60'	52.30'	N21°31'29"W	57°55'45"
C-17	44.00'	27.14'	26.71'	S74°17'59"E	35°20'14"
C-18	10.00'	14.18'	13.02'	S32°40'33"E	81°15'11"
C-19	2.00'	3.14'	2.83'	N01°50'32"W	90°00'00"
C-20	5.00'	4.46'	4.31'	S72°23'27"E	51°05'50"
C-21	23.45'	35.52'	32.22'	N38°17'51"E	86°46'28"
C-22	9.79'	17.95'	15.54'	S36°33'57"E	105°04'18"
C-23	10.03'	7.28'	7.12'	N68°45'51"W	41°34'25"
C-24	20.00'	26.79'	24.83'	S85°34'35"E	76°44'44"
C-25	12.00'	19.76'	17.60'	N08°48'06"E	94°20'18"
C-26	22.97'	21.26'	20.51'	S11°51'28"E	53°00'58"
C-27	5.00'	7.85'	7.07'	S83°21'57"E	90°00'00"
C-28	5.00'	3.93'	3.83'	S29°08'03"W	45°00'00"
C-29	20.00'	12.78'	12.57'	N38°51'49"E	36°37'28"
C-30	372.00'	80.62'	80.46'	N38°22'03"W	12°25'02"

DEVELOPER:
WOODBINE L.L.C.
BOISE, IDAHO