

LEGAL DESCRIPTION

A SUBDIVISION SITUATED IN SECTIONS 15 & 16, T.14N., R.65W., OF THE 6TH P.M., LARAMIE COUNTY, WYOMING, BEING MORE PARTICULARLY DESCRIBED AS FOLLOWS:

BEGINNING AT NORTHEAST CORNER OF SECTION 16, TOWNSHIP 14 NORTH, RANGE 65 WEST OF THE 6TH P.M., AND CONSIDERING THE NORTH LINE OF SAID SECTION 16 TO BEAR NORTH 89°24'31"E AND ALL BEARINGS CONTAINED HEREIN RELATIVE THERETO:
 THENCE S 00°30'29"W ALONG THE EAST LINE OF SAID SECTION 16 A DISTANCE OF 2639.75' TO THE EAST 1/4 CORNER OF SECTION 16;
 THENCE S 00°30'06"W ALONG THE EAST LINE OF SECTION 16 A DISTANCE OF 1319.08' TO THE NORTHEAST CORNER OF ARCHER ESTATES FIRST FILING;
 THENCE S 89°37'37"W ALONG THE NORTH LINE OF ARCHER ESTATES FIRST FILING A DISTANCE OF 3937.77' TO THE SOUTHEAST CORNER OF ARCHER ESTATES SECOND FILING;
 THENCE N 00°06'35"E ALONG THE EAST LINE OF ARCHER ESTATES SECOND FILING A DISTANCE OF 1275.35' TO A POINT ON THE SOUTH RIGHT-OF-WAY LINE OF GLENCOE DRIVE;
 THENCE N 89°35'25"E ALONG THE SOUTH RIGHT-OF-WAY LINE OF GLENCOE DRIVE A DISTANCE OF 1318.47' TO A POINT;
 THENCE N 89°35'58"E ALONG SAID RIGHT-OF-WAY LINE A DISTANCE OF 39.67' TO A POINT ON THE EAST RIGHT-OF-WAY LINE OF ARCHER ROAD EXTENDED SOUTH;
 THENCE N 00°03'30"E ALONG THE EAST RIGHT-OF-WAY LINE OF ARCHER ROAD A DISTANCE OF 2672.31' TO A POINT ON THE NORTH LINE OF SECTION 16, WHICH POINT LIES N 89°24'31"E A DISTANCE OF 40.00' FROM THE NORTH 1/4 CORNER OF SECTION 16;
 THENCE N 89°24'31"E ALONG THE NORTH LINE OF SECTION 16 A DISTANCE OF 2611.52' TO THE POINT OF BEGINNING;

ALSO A STRIP OF LAND SITUATED IN THE WEST 1/2 OF SECTION 15, T.14N., R.65W., BEING MORE PARTICULARLY DESCRIBED AS FOLLOWS:
 BEGINNING AT THE NORTHWEST CORNER OF SAID SECTION 15;
 THENCE: S 0°30'29"W A DISTANCE OF 2639.75' TO WEST 1/4 CORNER OF SECTION 15;
 THENCE S 0°30'06"W A DISTANCE OF 1319.08' TO A POINT;
 THENCE N 89°37'37"E A DISTANCE OF 40.00' TO A POINT;
 THENCE N 0°30'06"E A DISTANCE OF 1319.12' TO A POINT;
 THENCE N 0°30'29"E A DISTANCE OF 2639.86' TO A POINT ON THE CENTERLINE OF COUNTY ROAD #21;
 THENCE S 89°24'31"W ALONG SAID CENTERLINE A DISTANCE OF 4000' TO THE POINT OF BEGINNING.

SAID SUBDIVISION CONTAINS 279.024 ACRES, MORE OR LESS.

SURVEYOR'S CERTIFICATE

STATE OF WYOMING
 COUNTY OF LARAMIE

I, R.H. WESTERFIELD, A REGISTERED LAND SURVEYOR IN THE STATE OF WYOMING DO CERTIFY THAT THIS PLAT OF A SUBDIVISION OF ARCHER ESTATES THIRD FILING HAS BEEN PREPARED FROM THE FIELD NOTES OF SURVEY MADE UNDER MY SUPERVISION DURING NOVEMBER, 1974 AND THAT IT ACCURATELY REPRESENTS SAID SURVEY OF THE TRACTS AND STREETS AS SHOWN HEREON AND IS MONUMENTED ON THE GROUND BY 1/2" IRON PIPES UNLESS DENOTED OTHERWISE.

R.H. Westerfield
 WYOMING L.S. 643

DEDICATION

KNOW ALL MEN BY THESE PRESENTS, THAT EMIL H. SCHMALE AND GRACE L. SCHMALE, HUSBAND AND WIFE, OWNERS IN FEE SIMPLE OF ALL LAND EMBRACED IN THIS PLAT OF ARCHER ESTATES THIRD FILING AS SHOWN HEREON, DO HEREBY DECLARE THE SUBDIVISION OF SAID LAND AS IT APPEARS ON THIS PLAT TO BE THEIR FREE ACT AND DEED AND IN ACCORDANCE WITH THEIR DESIRES AND DO HEREBY DEDICATE TO THE PUBLIC FOREVER THE ROADS SHOWN HEREON

WITNESS *E. H. Schmale* *Grace L. Schmale*
 EMIL H. SCHMALE
 GRACE L. SCHMALE

ACKNOWLEDGEMENT

STATE OF WYOMING
 COUNTY OF LARAMIE
 THE FOREGOING INSTRUMENT WAS ACKNOWLEDGED BEFORE ME BY EMIL H. SCHMALE AND GRACE L. SCHMALE, HUSBAND AND WIFE, THIS 7TH DAY OF JANUARY, 1975. WITNESS MY HAND AND OFFICIAL SEAL.

Richard F. Hamer
 NOTARY PUBLIC
 MY COMMISSION EXPIRES _____

**ARCHER ESTATES
 THIRD FILING**

A SUBDIVISION SITUATED IN SECTIONS 15 & 16
 T.14N., R.65W., 6TH P.M.
 LARAMIE COUNTY, WYOMING 350963

The State of Wyoming }
 County of Laramie }
 This instrument was filed for record at 4:04 o'clock P.M. on the 3rd day of March, A.D. 1975 and duly recorded in books on page 302.

Janet C. Whithead
 County Clerk & Ex-Officio Register of Deeds

PLANNING SERVICES INC.
 PLANNING · ENGINEERING · LAND SURVEYING
 200 NORTH AMERICAN RD., CHEYENNE, WYOMING
 PROJECT No. 78 No. 78-0299
 DATE NOVEMBER 1974 SCALE 1" = 300'

APPROVAL

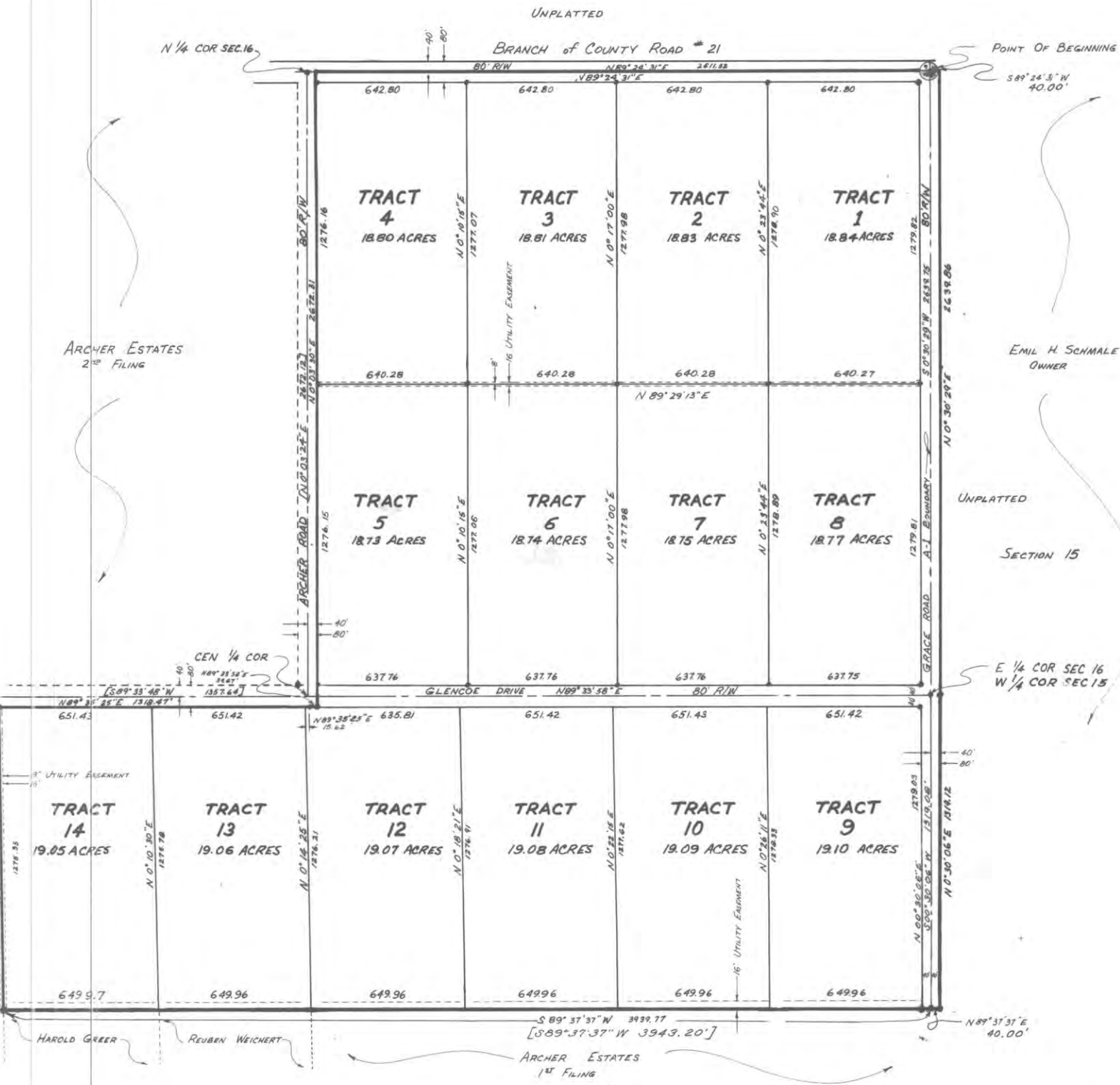
APPROVED BY THE BOARD OF COUNTY COMMISSIONERS OF LARAMIE COUNTY, WYOMING THIS 21 DAY OF JANUARY, 1975

Elmo Groter
 CHAIRMAN OF THE BOARD
Janet C. Whithead
 COUNTY CLERK

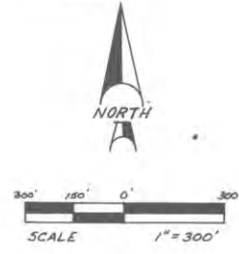
APPROVAL

APPROVED BY THE CHEYENNE-LARAMIE COUNTY REGIONAL PLANNING COMMISSION THIS 21 DAY OF JANUARY, 1975

Robert D. Lowe
 SECRETARY
James D. ...
 CHAIRMAN



- NOTES**
- ALL BEARINGS ARE BASED ON THE NORTH BOUNDARY LINE OF ARCHER ESTATES 1ST FILING
 - 1/2" IRON PIPE
 - [] DENOTES RECORDED MEASUREMENTS





RESOLUTION # 220607-30

**A RESOLUTION TO APPROVE A VACATION OF
TRACT 13, LESS 5.00 ACRES, ARCHER ESTATES, 3RD FILING,
LARAMIE COUNTY, WY.**

WHEREAS, Wyoming State Statutes §18-5-201 to 18-5-208; §18-5-301 to 18-5-315 authorize Laramie County, in promoting the public health, safety, morals and general welfare of the county, to regulate the use of land through zoning in unincorporated Laramie County; and

WHEREAS, the Laramie County Board of Commissioners adopted the Laramie County Land Use Regulations; and

WHEREAS, the proposed vacation is in accordance with Section 2-1-101 of the Laramie County Land Use Regulations; and

WHEREAS, the proposed Vacation is in accordance with §34-12-108 of the Wyoming State Statutes; and

WHEREAS, this resolution is the Vacation Tract 13, less 5.00 acres, Archer Estates, 3rd Filing, Laramie County, WY.

NOW THEREFORE BE IT RESOLVED BY THE GOVERNING BODY OF LARAMIE COUNTY, WYOMING, as follows:

The Laramie County Board of Commissioners finds that:

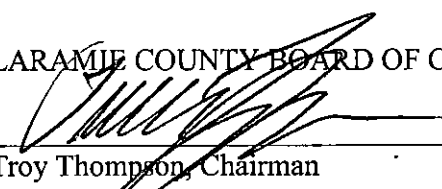
- a. This application is in conformance with section §34-12-106 to §34-12-111.
- b. The vacation has been submitted to create an Administrative Plat on Tract 13, less 5.00 acres, Archer Estates, 3rd Filing, to be split into two separate tracts.

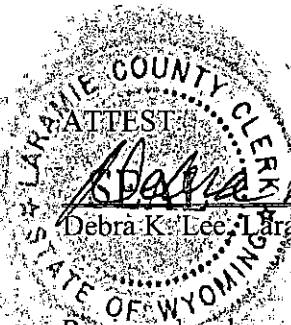
And the Board approves the Vacation of Tract 13, less 5.00 acres, Archer Estates, 3rd Filing, Laramie County, WY in order to create an Administrative Plat.

PRESENTED, READ AND ADOPTED THIS 7 DAY OF

June, 2022.

LARAMIE COUNTY BOARD OF COMMISSIONERS


Troy Thompson, Chairman




Debra K. Lee, Laramie County Clerk

Reviewed and approved as to form:


Laramie County Attorney's Office