

VICINITY MAP

CURVE TABLE

CURVE NO.	LENGTH	RADIUS	DELTA	CHORD AZIMUTH	CHORD DIST.
C-1	809.76'	5050.00'	09°11'14"	01°59'44"	808.89'
C-2	138.22'	450.00'	17°35'55"	06°12'05"	137.68'
C-3	522.35'	550.00'	54°24'56"	347°47'35"	502.94'
C-4	309.17'	450.00'	39°21'54"	340°16'04"	303.13'
C-5	10.08'	450.00'	1°17'01"	358°02'38"	10.08'
C-6	80.25'	450.00'	10°13'02"	3°47'38"	80.14'
C-7	47.89'	450.00'	6°05'52"	11°57'07"	47.87'
C-8	306.59'	275.00'	63°52'41"	302°03'39"	290.96'
C-9	351.19'	315.00'	63°52'41"	302°03'39"	333.28'
C-10	395.78'	355.00'	63°52'41"	302°03'39"	375.60'
C-11	312.86'	275.00'	65°11'02"	301°24'29"	296.26'
C-12	358.37'	315.00'	65°11'02"	301°24'29"	339.35'
C-13	403.87'	355.00'	65°11'02"	301°24'29"	382.44'
C-14	179.15'	262.00'	39°10'42"	160°31'59"	175.68'
C-15	206.51'	302.00'	39°10'42"	160°31'59"	202.50'
C-16	233.86'	342.00'	39°10'42"	160°31'59"	229.33'
C-17	373.50'	262.00'	81°40'42"	181°46'58"	342.66'
C-18	430.52'	302.00'	81°40'42"	181°46'58"	394.98'
C-19	487.54'	342.00'	81°40'42"	181°46'58"	447.29'
C-20	160.05'	262.00'	35°00'00"	205°07'19"	157.57'
C-21	184.48'	302.00'	35°00'00"	205°07'19"	181.63'
C-22	208.92'	342.00'	35°00'00"	205°07'19"	205.68'

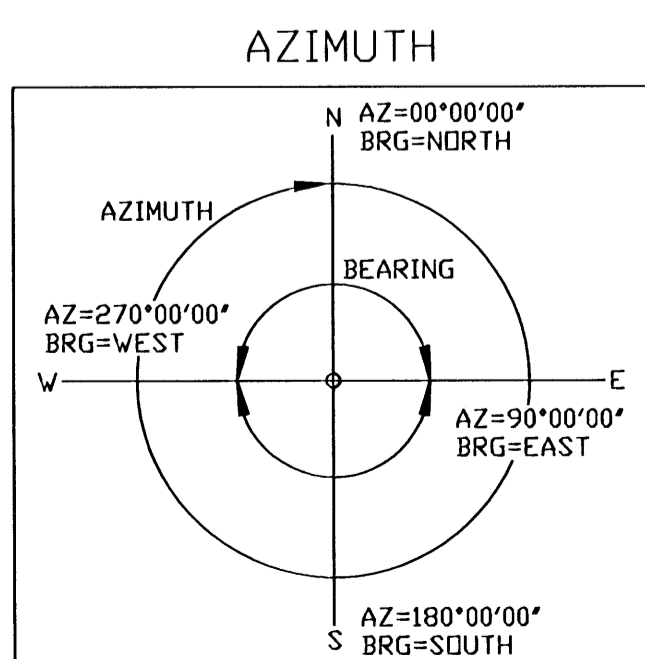
- NOTES:**
- Basis of azimuths by survey tie to City Control Stations Dell Range Nos. 1 and 3.
 - There shall be no additional access to Dell Range Boulevard from Lot 2, Block 1.

VACATION STATEMENT

THIS PLAT VACATES AND REPLACES ALL OF WINDMILL ROAD SECOND FILING AS RECORDED BY RECESSION NO. 554731; BK. 9, PG. 137 IN THE LARAMIE COUNTY CLERK'S OFFICE.

LEGEND

- ⊕ 1-1/2" Diameter AL Cop on No. 5 x 24" rebar marked "LS 4828-COC".
- ⊠ Found 2-1/2" Diameter Al. Cop marked "AVI PC LS 10838".
- ⊙ Set 2" Diameter Al. Cop on No. 5 x 30" rebar marked "City of Cheyenne, LS 4828".
- △ Found Public, Land Survey corner monument per state of Wyoming Corner Recordation Form filed in County Clerk's Office.
- Found 1-1/2" Diameter Al. Cop marked "LS 519".
- Found 1/2" Diameter Iron Pipe per Plat of Record.
- Subdivision Boundary line.
- Lot Boundary and Right Of Way line.



FILING RECORD

Reception 572146

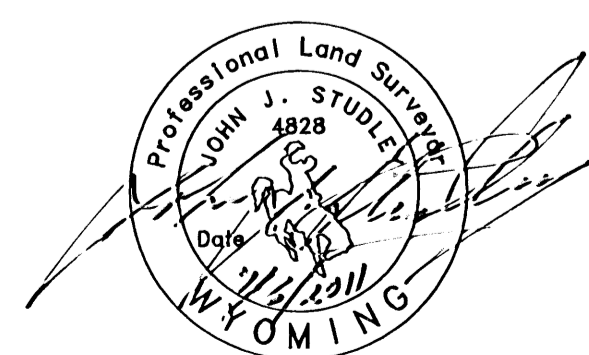
The State of Wyoming ss
County of Laramie

This instrument was filed for record at 12:04 o'clock P.M., on the 13 day of 7 A.D. 2011 and duly recorded in P/C 9 slot 160

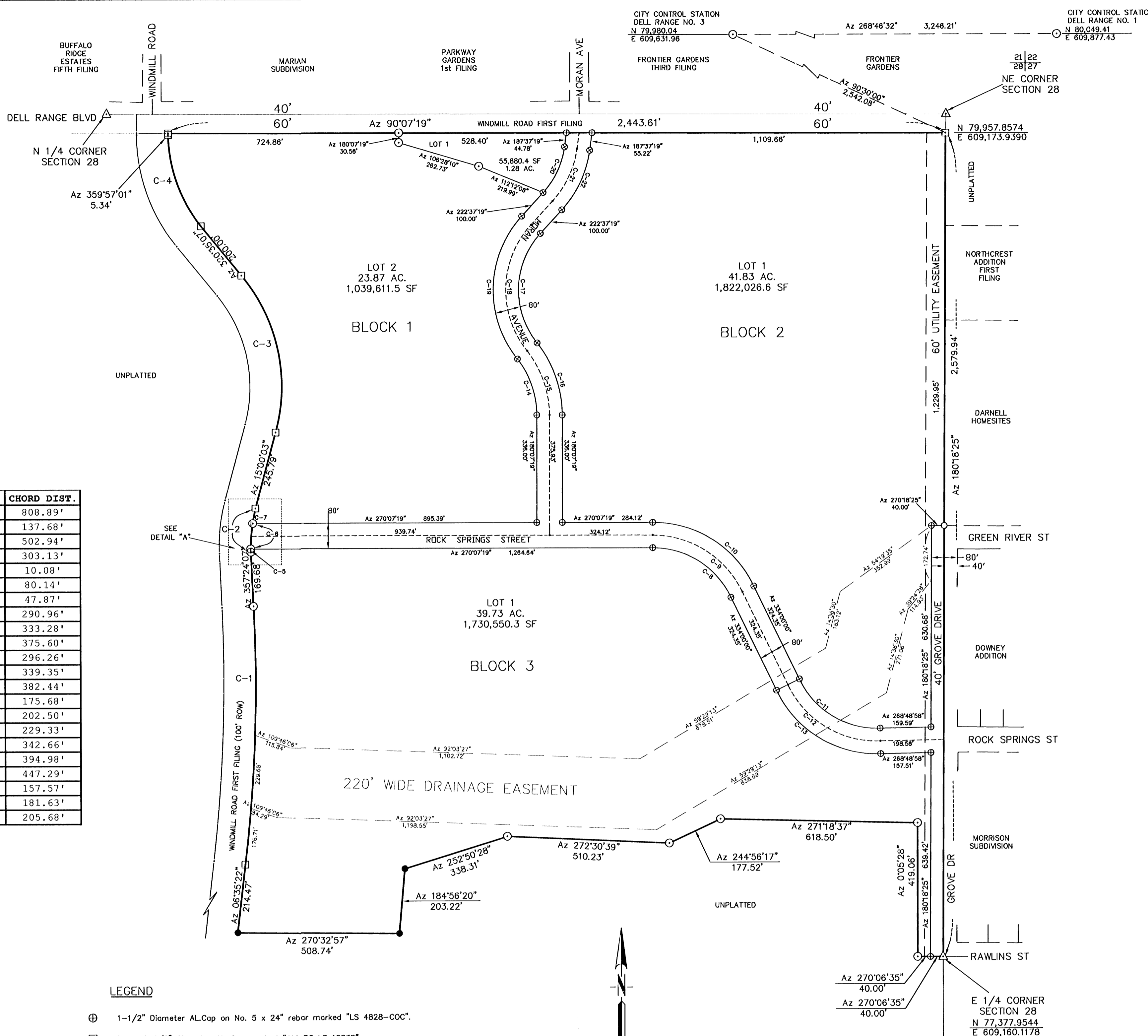
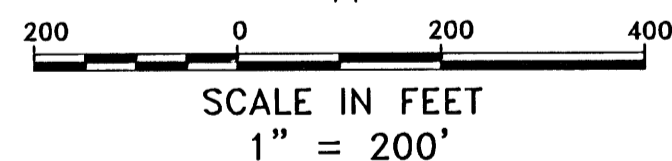
County Clerk & Public Register at Deeds
By [Signature] Deputy

STATE OF WYOMING)
) SS
COUNTY OF LARAMIE)

I, John J. Studley, Wyoming Registered Professional Land Surveyor No. 4828, employee/agent for the City of Cheyenne, do hereby certify the FINAL PLAT hereon was prepared from field notes of an actual survey made by me from MARCH through APRIL, 2011, and that it correctly shows the results of said survey to the best of my knowledge and belief.



CERTIFICATE OF SURVEYOR



DEDICATION

KNOW ALL PERSONS BY THESE PRESENTS THAT: City of Cheyenne, owner in fee simple of all lands embraced by the Northeast One-Quarter (NE1/4) of Section 28 in Township 14 North, Range 66 West of the Sixth Principal Meridian, City of Cheyenne, Laramie County, Wyoming and being more particularly described as follows:

BEGINNING at the Northeast Corner of said Section 28, said corner being a 3 1/4 inch diameter WIDOT aluminum cap as per filed State of Wyoming Corner Record by Wyoming Registered Professional Land Surveyor No. 2927;

THENCE on and along the easterly line of said Section 28, on an Azimuth of 180° 18' 25" a distance of 60.00 feet to the TRUE POINT OF BEGINNING on the southerly right of way line of Dell Range Boulevard as platted under Windmill Road First Filing and monumented with a 2 inch diameter aluminum cap stamped "AVI PC, WY PLS 10838";

THENCE continuing on and along said easterly line of said Section 28, on an Azimuth of 180° 18' 25" a distance of 2,579.94 feet to the easterly Quarter Corner of said Section 28 as per filed State of Wyoming Corner Record by Wyoming Registered Professional Land Surveyor No. 2500;

THENCE on an Azimuth of 270° 06' 35" a distance of 80.00 feet to a point monumented with a 2 1/2 inch diameter aluminum cap stamped "CITY OF CHEYENNE, LS 4828";

THENCE on an Azimuth of 0° 05' 28" a distance of 419.06 feet to a point monumented with a 2 1/2 inch diameter aluminum cap stamped "CITY OF CHEYENNE, LS 4828";

THENCE on an Azimuth of 271° 18' 37" a distance of 618.50 feet to a point monumented with a 2 1/2 inch diameter aluminum cap stamped "CITY OF CHEYENNE, LS 4828";

THENCE on an Azimuth of 244° 56' 17" a distance of 177.52 feet to a point monumented with a 2 1/2 inch diameter aluminum cap stamped "CITY OF CHEYENNE, LS 4828";

THENCE on an Azimuth of 272° 30' 39" a distance of 510.23 feet to a point monumented with a 2 1/2 inch diameter aluminum cap stamped "CITY OF CHEYENNE, LS 4828";

THENCE on an Azimuth of 252° 50' 28" a distance of 338.31 feet to a point monumented with a 2 inch diameter aluminum cap stamped "AVI PC, WY PLS 10838";

THENCE on an Azimuth of 184° 56' 20" a distance of 203.22 feet to a point monumented with a 2 inch diameter aluminum cap stamped "AVI PC, WY PLS 10838";

THENCE on an Azimuth of 270° 32' 57" a distance of 509.74 feet to a point monumented with a 2 1/2 inch diameter aluminum cap stamped "CITY OF CHEYENNE, LS 4828" on the easterly right of way line of Windmill Road as platted under Windmill Road First Filing;

THENCE on and along the easterly right of way line of Windmill Road and southerly right of way line of Dell Range Boulevard, as platted under Windmill Road First Filing the following ten courses:

THENCE on an Azimuth of 6° 35' 22" a distance of 214.47 feet to a point monumented with a 2 inch diameter aluminum cap stamped "AVI PC, WY PLS 10838";

THENCE on a curve to the left having an arc length of 809.76 feet, radius of 5050.00 feet, central angle of 9°11'14", chord Azimuth of 1° 59' 44" and chord distance of 808.89 feet to a Point of Tangency, monumented with a 2 1/2 inch diameter aluminum cap stamped "CITY OF CHEYENNE, LS 4828";

THENCE on an Azimuth of 35° 24' 07" a distance of 169.68 feet to a point monumented with a 2 1/2 inch diameter aluminum cap stamped "CITY OF CHEYENNE, LS 4828";

THENCE on a curve to the right having an arc length of 138.22 feet, radius of 450.00 feet, central angle of 17°35'55", chord Azimuth of 6° 12' 05" and chord distance of 137.68 feet to a Point of Tangency, monumented with a 2 inch diameter aluminum cap stamped "AVI PC, WY PLS 10838";

THENCE on an Azimuth of 15° 00' 03" a distance of 245.79 feet to a point monumented with a 2 inch diameter aluminum cap stamped "AVI PC, WY PLS 10838";

THENCE on a curve to the left having an arc length of 522.35 feet, radius of 550.00 feet, central angle of 54°24'56", chord Azimuth of 347° 47' 35" and chord distance of 502.94 feet to a Point of Tangency, monumented with a 2 inch diameter aluminum cap stamped "AVI PC, WY PLS 10838";

THENCE on an Azimuth of 320° 35' 07" a distance of 200.00 feet to a point monumented with a 2 inch diameter aluminum cap stamped "AVI PC, WY PLS 10838";

THENCE on a curve to the right having an arc length of 309.17 feet, radius of 450.00 feet, central angle of 39°21'54", chord Azimuth of 340° 16' 04" and chord distance of 303.13 feet to a Point of Tangency, monumented with a 2 inch diameter aluminum cap stamped "AVI PC, WY PLS 10838";

THENCE on an Azimuth of 359° 57' 01" a distance of 5.34 feet to a point monumented with a 2 inch diameter aluminum cap stamped "AVI PC, WY PLS 10838" at the point of intersection with the southerly right of way line of Dell Range Boulevard;

Thence on and along said southerly right of way line of Dell Range Boulevard on an Azimuth of 90° 07' 19" a distance of 2,443.61 feet to the TRUE POINT OF BEGINNING.

Said lands containing 114.85 acres more or less.

Has caused the same to be surveyed, vacated, replatted and known as CAHILL PARK ADDITION, do hereby declare the subdivision of said land as it appears on this plat, to be their free act and deed and in accordance with their desires, and do hereby dedicate the street rights of way to the public and grant the easements for the purposes indicated thereon.

[Signature]
Richard L. Kaysen, Mayor
CITY OF CHEYENNE

ACKNOWLEDGEMENTS

STATE OF WYOMING)
) SS
COUNTY OF LARAMIE)

THE DEDICATION INSTRUMENT WAS ACKNOWLEDGED BEFORE ME BY RICHARD L. KAYSEN, MAYOR, CITY OF CHEYENNE, THIS 8TH DAY OF JULY, 2011.

NOTARY PUBLIC Wendy J. Kunkade

MY COMMISSION EXPIRES 3 27 2014

APPROVALS

APPROVED BY THE CITY OF CHEYENNE PLANNING COMMISSION THIS 6TH DAY OF JUNE, 2011.

[Signature]
DEVELOPMENT DIRECTOR

APPROVED BY THE CITY COUNCIL OF THE CITY OF CHEYENNE, WYOMING THIS 21ST DAY OF JUNE, 2011.

[Signature]
MAYOR

ATTEST: [Signature]
CITY CLERK

CAHILL PARK ADDITION

A REPLAT OF WINDMILL ROAD SECOND FILING, A SUBDIVISION OF A PORTION OF THE NE 1/4 OF SECTION 28, TOWNSHIP 14 NORTH, RANGE 66 WEST, OF THE 6TH PM, CITY OF CHEYENNE, LARAMIE COUNTY, WYOMING.

DATE OF PREPARATION: APRIL 2011

CITY OF CHEYENNE
2101 ONEIL AVENUE
CHEYENNE, WYOMING 82001
(307) 637-6274

CAHILL PARK ADDITION

REVISIONS

DATE	REVISIONS

DESIGN BY: JLS, MGS
DRAWN BY: JLS, MGS
CHECKED BY: JLS, MGS
DATE: 5/2/11
SCALE: 1"=200'
FILE NAME: Cahill Park Addition

SHEET 1 OF 1