

**NO PUBLIC WATER OR WASTEWATER SYSTEMS ARE PROPOSED
NO PUBLIC MAINTENANCE OF ROADS
FIRE PROTECTION PROVIDED BY FIRE DISTRICT NO. 2**

DEDICATION

KNOW ALL PERSON BY THESE PRESENTS THAT: John G. Christensen and Patsy K. Christensen, husband and wife, owner in fee simple of a tract of land situated in a portion of the E½NE¼SW¼ of Section 19, Township 14 North, Range 65 West of the 6th P.M., Laramie County, Wyoming, more particularly described as:

Beginning at the center quarter quarter (monumented with a found 1½" aluminum cap stamped "PELS 662") also being the northeast corner of said E½NE¼SW¼; thence S.00°01'38"W., along the east line of said E½NE¼SW¼, a distance of 1318.72 feet to the north line of the 40 foot right-of-way as dedicated to the public per Christensen Tracts subdivision; thence N.89°45'34"W., along said north line, a distance of 653.50 feet to the southeast corner of Christensen Tracts 2nd Filing; thence N.00°07'07"W., along the east line of said Christensen Tracts 2nd Filing, a distance of 1318.11 feet to the northeast corner of said Christensen Tracts 2nd Filing also being the north line of said E½NE¼SW¼; thence S.89°43'38"E., along said north line, a distance of 656.86 feet to the point of beginning.

Has caused the same to be surveyed, platted and known as CHRISTENSEN TRACTS 3RD FILING, do hereby declare the subdivision of said land as it appears on this plat, to be their free act and deed and in accordance with their desires and dedicate to the public the road and grant the easements for the purposes indicated hereon.

John G. Christensen
John G. Christensen

Patsy K. Christensen
Patsy K. Christensen

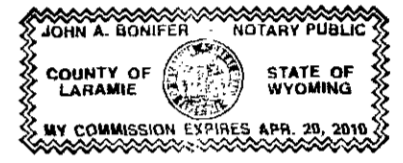
ACKNOWLEDGEMENTS

STATE OF WYOMING)
)SS
COUNTY OF LARAMIE)

The foregoing instrument was acknowledged before me this 22nd day of JANUARY, 2007, by John G. Christensen and Patsy K. Christensen, husband and wife.

[Signature]
Notary Public, Laramie County, Wyoming

My Commission Expires: APR 30, 2010



APPROVALS

Approved by the Cheyenne-Laramie County Regional Planning Commission this 3rd day of December, 2007.

[Signature]
Development Director

Approved by the Board of County Commissioners of Laramie County, Wyoming, this 15th day of January, 2008.

[Signature] ATTEST: *[Signature]*
Chairman County Clerk

Approved by the City Council of the City of Cheyenne, Wyoming, this 20th day of December, 2007.

[Signature] ATTEST: *[Signature]*
Mayor City Clerk

LEGEND

- SET ¾" x 24" LONG REBAR WITH 1½" ALUMINUM CAP STAMPED "SSS P.L.S. 2500"
- FOUND 1½" ALUMINUM CAP STAMPED "PELS 662"
- FOUND ¾" IRON PIPE
- FOUND 2½" ALUMINUM CAP STAMPED "PELS 2613"
- FOUND 1 1/2" ALUMINUM CAP STAMPED "SSS P.L.S. 2500"
- FOUND 2½" ALUMINUM CAP STAMPED "PELS 9233"

NOTES:

- 1) SUBJECT PROPERTY DOES NOT FALL WITHIN SPECIAL 100 YEAR FLOOD HAZARD AREA AS SHOWN ON F.E.M.A. MAP PANEL NO. 56021C1112F DATED JANUARY 17, 2007.
- 2) BASIS OF BEARINGS REFERENCED FROM CITY OF CHEYENNE CONTROL MONUMENTS "DELL RANGE" AND "PERSHING".

CERTIFICATE OF SURVEYOR

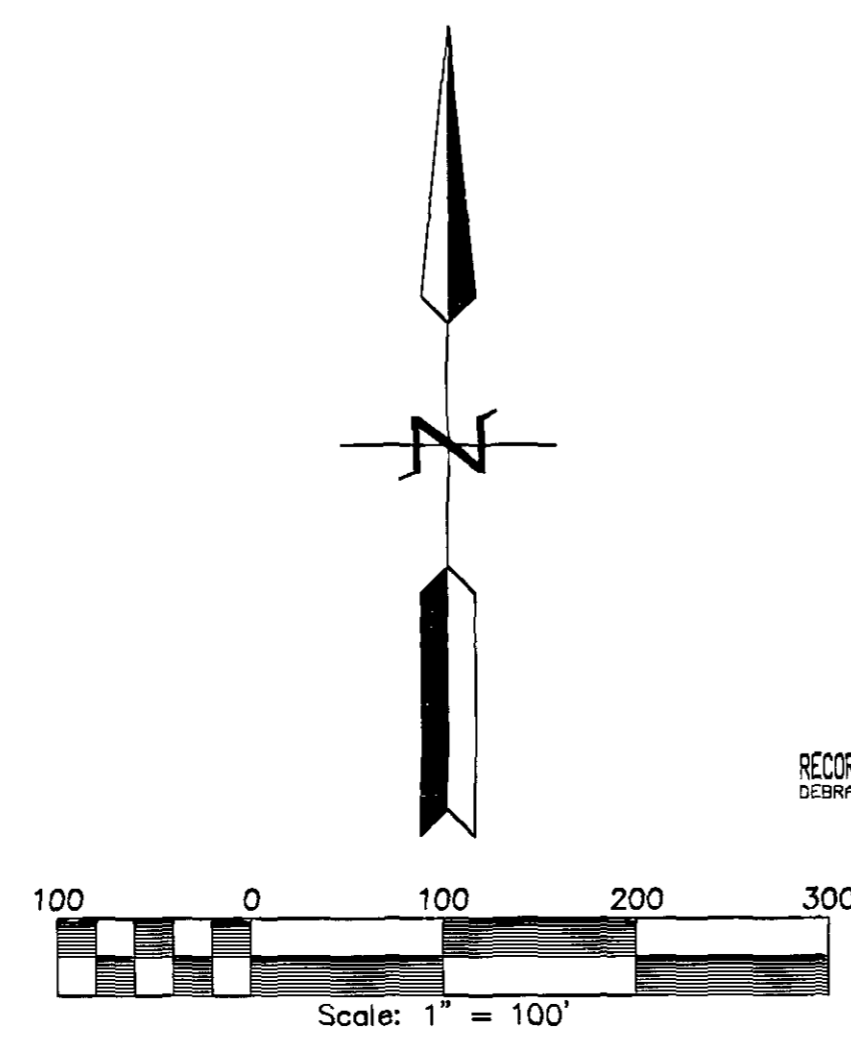
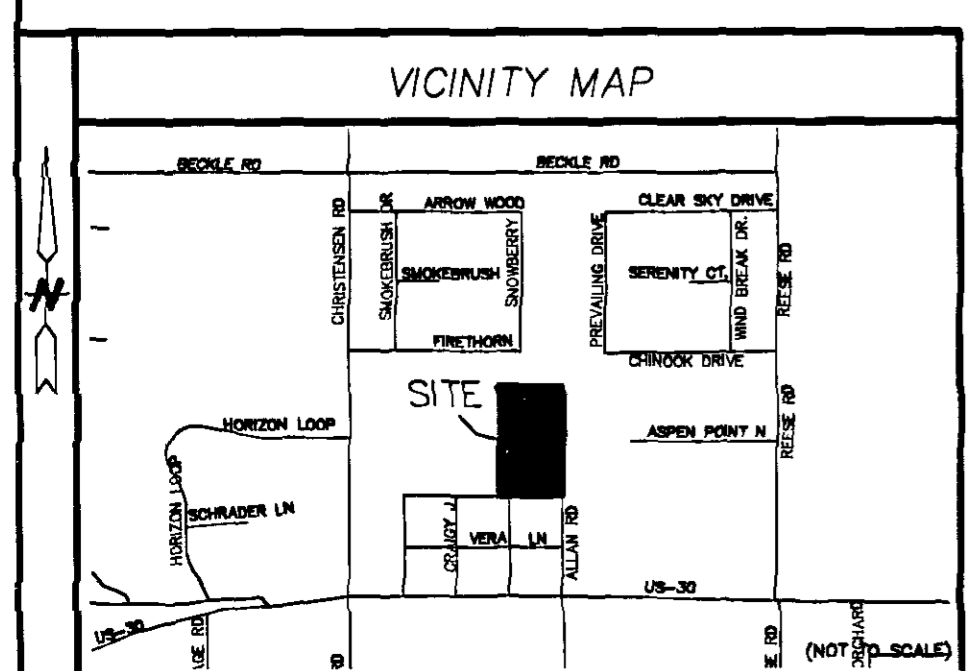
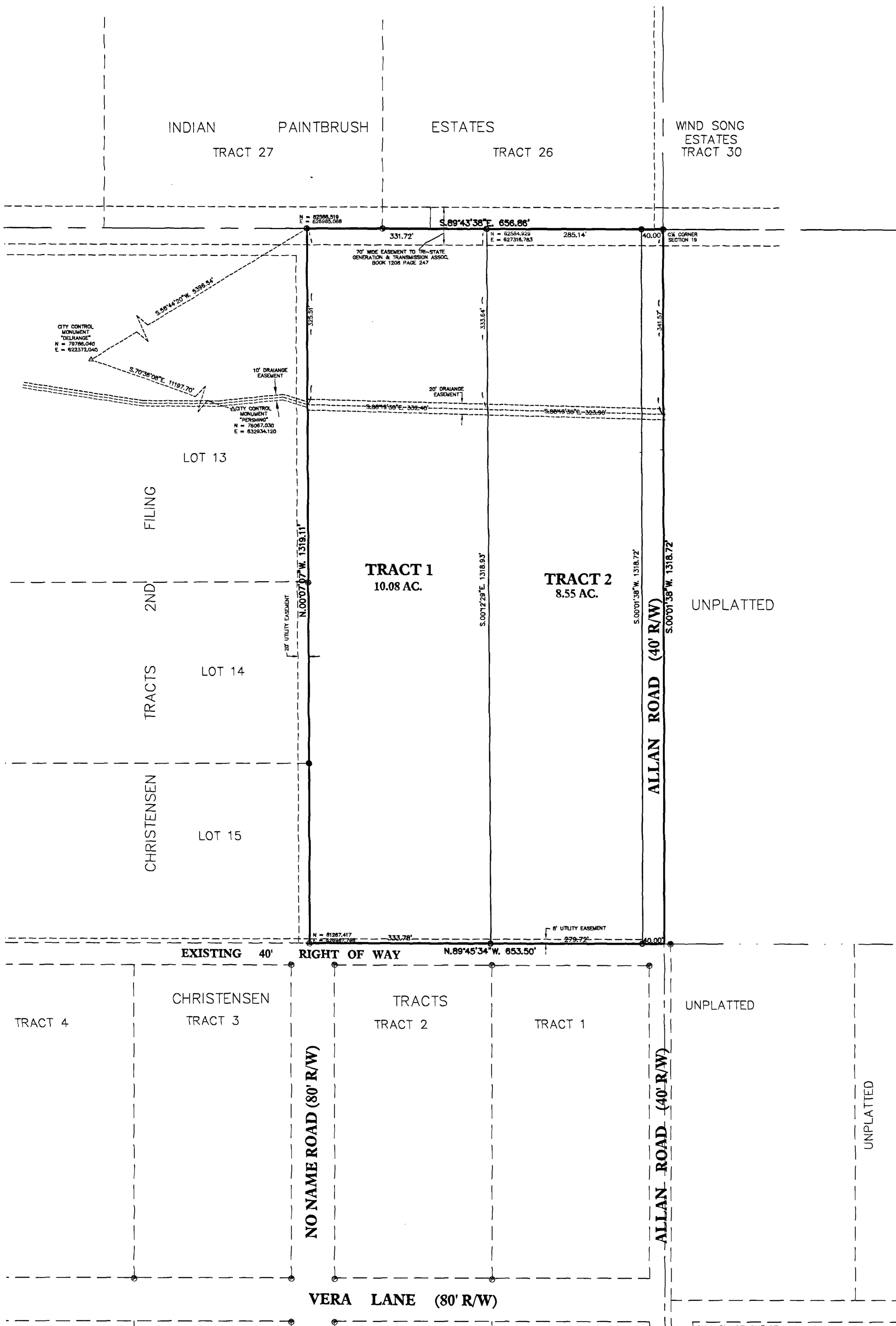
I, John A. Stell, Registered Professional Land Surveyor in the State of Wyoming, hereby state that this plat of CHRISTENSEN TRACTS 3RD FILING was prepared from official plats and deeds of record and from notes of a field survey conducted by me or under my direct supervision during the month of JUNE, 2007, that the monuments are set or found as shown and that this plat correctly represents said survey of the land depicted hereon to the best of my knowledge.

**CHRISTENSEN TRACTS
3RD FILING**

A PORTION OF
E½NE¼SW¼
SECTION 19, TOWNSHIP 14 NORTH,
RANGE 65 WEST, OF THE 6TH P.M.
LARAMIE COUNTY, WYOMING.



STELL SURVEYING SERVICES, LLC
PROFESSIONAL LAND SURVEYORS
1102 WEST 19th STREET P.O. BOX 2073
PH(307)634-7273 CHEYENNE, WY 82003



Reception 516890
The State of Wyoming)
County of Laramie) SS
This instrument was filed for record
on the 13th day of February, 2007 P.M. on the
RECORDED 2/13/2009 AT 1:27 PM REC# 516380 K# 9 PG# 92
DEBRA K. LATHROP COUNTY CLERK
PC 2-13-09-92
County Clerk & Ex-Officio Registrar at Deeds
By *[Signature]* Deputy

