

LAND DESCRIPTIONS

LAND DESCRIPTION TRACT 1

A tract of land situated in a portion of the East Half of Section 2, Township 16 North, Range 67 West of the 6th P.M., Laramie County, Wyoming, being more particularly described as follows:
Beginning at the North Quarter Corner of said Section 2; thence S.89° 30' 07"E, along the north line of Section 2, a distance of 2.93 feet to the South Quarter Corner of said Section 2, Township 17 North, Range 67 West; thence S.89° 31' 31"E, along the north line of Section 2, a distance of 1338.35 feet; thence S.00° 11' 34"W, a distance of 1136.85 feet; thence N.89° 31' 24"W, a distance of 1340.83 feet to the west line of the E½; thence N.00° 10' 14"E, along the west line, a distance of 1136.81 feet to the point of beginning. Containing 35.00 acres more or less and subject to easements, covenants or restrictions of record. Subject to easements as shown on the record of survey of R Bar H Ranchettes II.

LAND DESCRIPTION TRACT 2

A tract of land situated in a portion of the East Half of Section 2, Township 16 North, Range 67 West of the 6th P.M., Laramie County, Wyoming, being more particularly described as follows:
Beginning at the Northeast Corner of said Section 2; thence S.00° 12' 55"W, along the east line of Section 2, a distance of 1136.89 feet; thence N.89° 31' 24"W, a distance of 1340.83 feet; thence N.00° 11' 34"E, a distance of 1136.85 feet to the north line of Section 2; thence S.89° 31' 31"E, along said north line, a distance of 1282.04 feet to the Southeast Corner of Section 35, Township 17 North, Range 67 West; thence S.89° 31' 51"E, along said north line, a distance of 59.23 feet to the point of beginning. Containing 35.00 acres more or less and subject to easements, covenants or restrictions of record. Subject to easements as shown on the record of survey of R Bar H Ranchettes II.

LAND DESCRIPTION TRACT 3

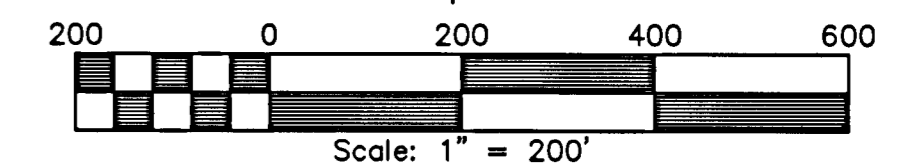
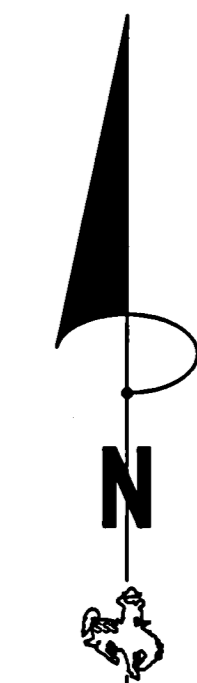
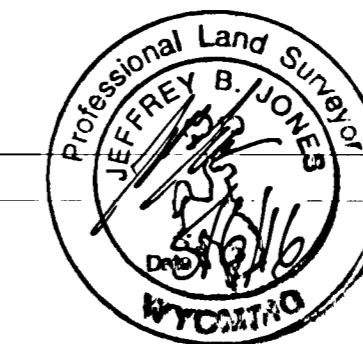
A tract of land situated in a portion of the East Half of Section 2, Township 16 North, Range 67 West of the 6th P.M., Laramie County, Wyoming, being more particularly described as follows:
Beginning at a point of the East line of said Section 2 from which the Northeast Corner of said Section 2 bears N.00° 12' 55"E, a distance of 1136.89 feet; thence S.00° 12' 55"W, along the east line of Section 2, a distance of 1101.68 feet; thence N.88° 29' 22"W, a distance of 735.85 feet; thence N.90° 00' 00"W, a distance of 656.97 feet; thence N.00° 00' 00"E, a distance of 1093.90 feet; thence S.89° 31' 24"E, a distance of 1396.75 feet to the point of beginning. Containing 35.00 acres more or less and subject to easements, covenants or restrictions of record. Subject to easements as shown on the record of survey of R Bar H Ranchettes II.

LAND DESCRIPTION TRACT 4

A tract of land situated in a portion of the East Half of Section 2, Township 16 North, Range 67 West of the 6th P.M., Laramie County, Wyoming, being more particularly described as follows:
Beginning at the Center Quarter Corner of said Section 2; thence N.00° 10' 14"E, along the west line of the E½, a distance of 1575.63 feet; thence S.89° 31' 24"E, a distance of 1284.91 feet; thence S.00° 00' 00"E, a distance of 1093.90 feet; thence N.90° 00' 00"W, a distance of 1208.22 feet; thence S.00° 10' 01"W, a distance of 1415.65 feet; thence N.89° 59' 03"W, a distance of 80.00 feet to the west line of the E½; thence N.00° 10' 10"E, along said west line, a distance of 944.59 feet to the point of beginning. Containing 35.00 acres more or less and subject to easements, covenants or restrictions of record. Subject to easements as shown on the record of survey of R Bar H Ranchettes II.

CERTIFICATE OF SURVEYOR

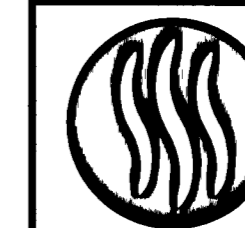
I, Jeffrey B. Jones, Registered Professional Land Surveyor in the State of Wyoming, for and on behalf of Steil Surveying Services, LLC, hereby state, to the best of my knowledge, information and belief, that this map was prepared from field notes taken during an actual survey made by me or under my direct supervision; and that this map correctly shows the results of said survey and that the monuments found or set are as shown.



**RECORD OF SURVEY
FOR
R BAR H
RANCHETTES II
OF**

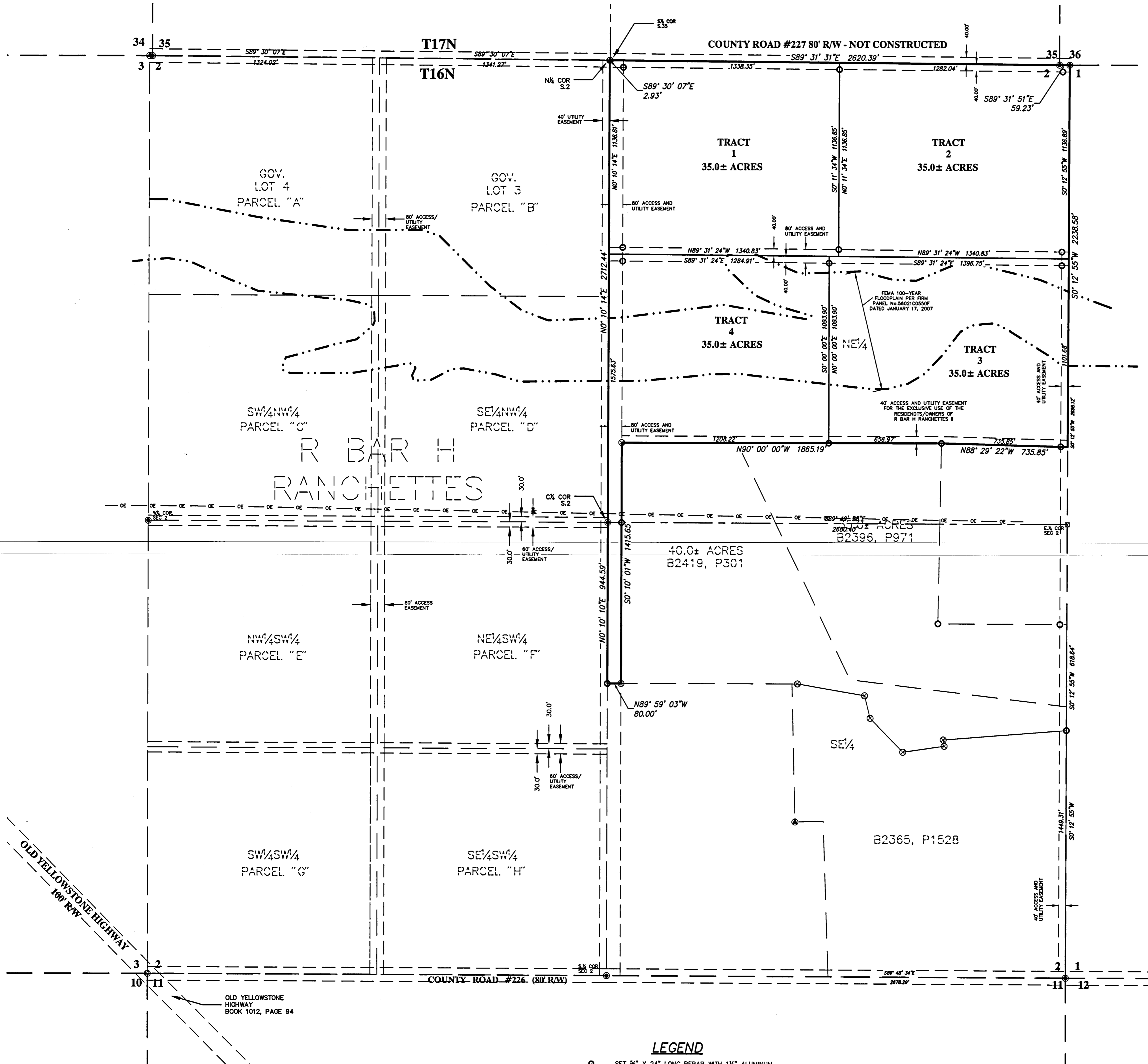
SITUATED IN A PORTION OF
THE EAST HALF OF
SECTION 2, T.16N., R.67W.,
OF THE 6TH P.M.,
LARAMIE COUNTY, WYOMING.

PREPARED MAY, 2016



STEIL SURVEYING SERVICES, LLC
PROFESSIONAL LAND SURVEYORS

1102 W. 19th ST. CHEYENNE, WY. 82001 (307)634-7273
756 GILCHRIST ST. WHEATLAND, WY. 82201 (307)322-9769



LEGEND

- SET 3/4" X 24" LONG REBAR WITH 1 1/2" ALUMINUM CAP STAMPED "SSS P.L.S. 5910"
- ⊠ FOUND 2 1/2" ALUMINUM CAP STAMPED "SSS P.L.S. 5910"
- ⊙ FOUND 1 1/2" ALUMINUM CAP STAMPED "SSS P.L.S. 5910"
- FOUND 2 1/2" ALUMINUM CAP STAMPED "P.E.L.S. 2613"

RECORDED 5/6/2016 AT 3:29 PM BK# 2498 PG# 1124
Debra K. Lathrop, CLERK OF LARAMIE COUNTY, WY. PAGE 1 OF 1

2014DWG\14143\14143 ROS NE 35 ACRES.DWG