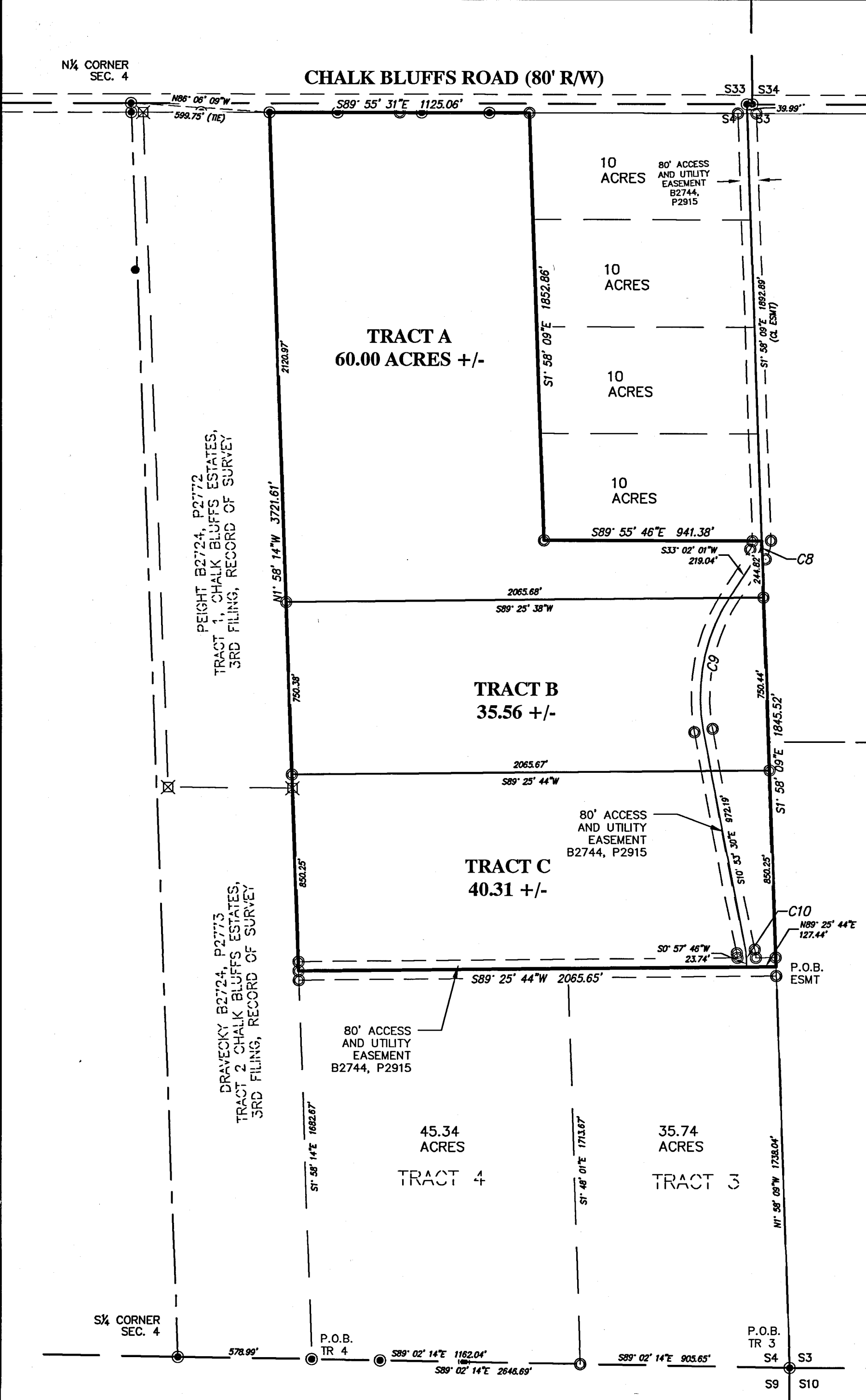


© COPYRIGHT 2021 STEIL SURVEYING SERVICES, LLC ALL RIGHTS RESERVED

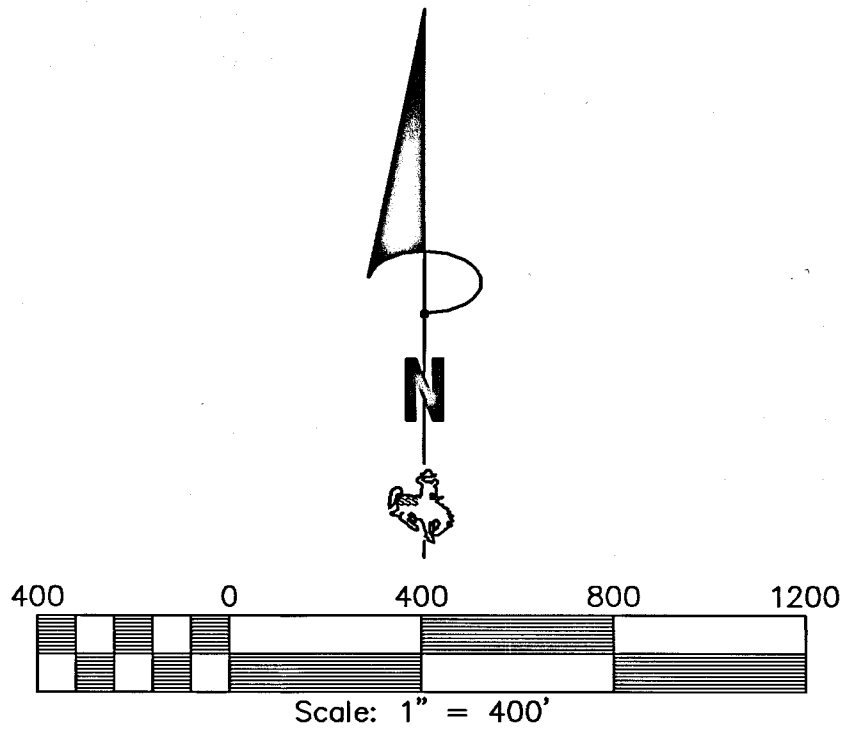


BASIS OF BEARINGS:
 WYOMING STATE PLANE COORDINATES,
 EAST ZONE, NAD83-2011,
 US SURVEY FEET, DISTANCES ARE
 GRID DISTANCES.

CURVE TABLE					
CURVE #	DELTA	RADIUS	CHORD BEARING	CHORD LENGTH	ARC LENGTH
C8	35° 00' 10"	100.00'	S15° 31' 56"W	60.15'	61.09'
C9	43° 29' 36"	800.00'	S11° 17' 13"W	592.80'	607.28'
C10	12° 47' 35"	200.00'	S5° 26' 01"E	44.56'	44.66'

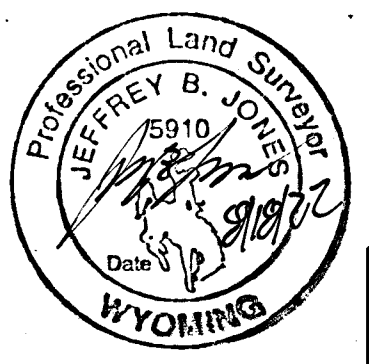
LEGEND

- SET 5/8" X 24" LONG REBAR WITH 1 1/2" ALUMINUM CAP STAMPED "SSS P.L.S. 5910"
- FOUND 2" ALUMINUM CAP STAMPED PLS 10838
- FOUND ALUMINUM CAP STAMPED LS 422
- ⊗ FOUND ALUMINUM CAP STAMPED PLS 5910



CERTIFICATE OF SURVEYOR

I, Jeffrey B. Jones, A Professional Land Surveyor in the State of Wyoming, for and on behalf of Steil Surveying Services, LLC, hereby state, to the best of my knowledge, information and belief, that this map was prepared from field notes taken during an actual survey made by me or under my direct supervision; and that this map correctly shows the results of said survey and that the monuments found or set are as shown.



LAND DESCRIPTIONS

TRACT A

A tract of land situate in the East half of Section 4, T12N, R65W, 6TH P.M., Laramie County, Wyoming, more particularly described as follows:
 Beginning at the Northwest Corner of Tract 1 of said Chalk Bluff Estates (Third Filing) on the South right of way of Chalk Bluffs Road, from which the North Quarter Corner of Section 4 bears N86°06'09"W, a distance of 599.75 feet; thence, S 89° 55' 31" E for a distance of 1125.06 feet to a point on a line; thence, S 01° 58' 09" E for a distance of 1852.86 feet to a point on a line; thence S 89° 55' 46.3" E for a distance of 941.38 feet to a point on a line; thence S 01° 58' 09" E for a distance of 244.82 feet to a point on a line; thence S 89° 25' 44" W for a distance of 2065.68 feet to a point on a line; thence N 01° 58' 14" W a distance of 2120.97 feet to the POINT OF BEGINNING; Containing 60.00 acres more or less, subject to easements, covenants or restrictions of record.

TRACT B

A tract of land situate in the East half of Section 4, T12N, R65W, 6TH P.M., Laramie County, Wyoming, more particularly described as follows:
 Beginning at a point on the East line of the East half of Section 4, on the South Right of way of Chalk Bluffs Road, from which the Northeast Corner of Section 4 bears N1°58'09"W, a distance of 39.99 feet; thence S1°58'09"E along the East line of the East half of Section 4, a distance of 2137.71 feet; to the true Point of Beginning; thence S 01° 58' 09." E for a distance of 750.44 feet to a point on a line; thence S 89° 25' 44" W for a distance of 2065.67 feet to a point on a line; thence N 01° 58' 14" W for a distance of 750.38 feet to a point on a line; thence N 89° 25' 44.1" E a distance of 2065.68 feet to the POINT OF BEGINNING. Containing 35.56 acres more or less, subject to easements, covenants or restrictions of record.

TRACT C

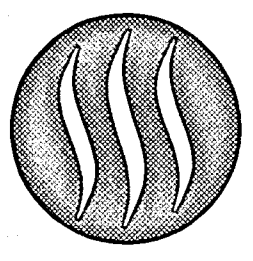
A tract of land situate in the East half of Section 4, T12N, R65W, 6TH P.M., Laramie County, Wyoming, more particularly described as follows:
 Beginning at a point on the East line of the East half of Section 4, on the South Right of way of Chalk Bluffs Road, from which the Northeast Corner of Section 4 bears N1°58'09"W, a distance of 39.99 feet; thence S1°58'09"E along the East line of the East half of Section 4, a distance of 2888.11 feet; to the true Point of Beginning; thence S 01° 58' 09." E for a distance of 850.25 feet to a point on a line; thence S 89° 25' 44" W for a distance of 2065.65 feet to a point on a line; thence N 01° 58' 14" W for a distance of 850.25 feet to a point on a line; thence N 89° 25' 44.1" E a distance of 2065.67 feet to the POINT OF BEGINNING. Containing 40.31 acres more or less, subject to easements, covenants or restrictions of record.

SURVEY DRAWER
 DRAWER # 8, SURVEY # 53

**RECORD OF SURVEY
 CHALK BLUFFS
 ESTATES,
 5TH FILING
 FOR
 JESSIE PEIGHT**

A PORTION OF THE EAST HALF OF SECTION 4,
 T12N, R65W, 6TH P.M.,
 LARAMIE COUNTY, WYOMING.

PREPARED July, 2021



STEIL SURVEYING SERVICES, LLC
 PROFESSIONAL LAND SURVEYORS
 PLANNING & DEVELOPMENT SPECIALISTS
 1102 WEST 19th ST. CHEYENNE, WY. 82001 ○ (307) 634-7273
 756 GILCHRIST ST. WHEATLAND, WY. 82201 ○ (307) 322-9789
 www.SteilSurvey.com ○ info@SteilSurvey.com

RECP #: 842861
 RECORDED 8/18/2022 AT 12:13 PM BK# 2800 PG# 1267
 Debra K. Lee, CLERK OF LARAMIE COUNTY, WY PAGE 1 OF 1

REVISED: 8/9/2022
 18317 ROS JUL 2022 35 AC EXEMPTION.DWG