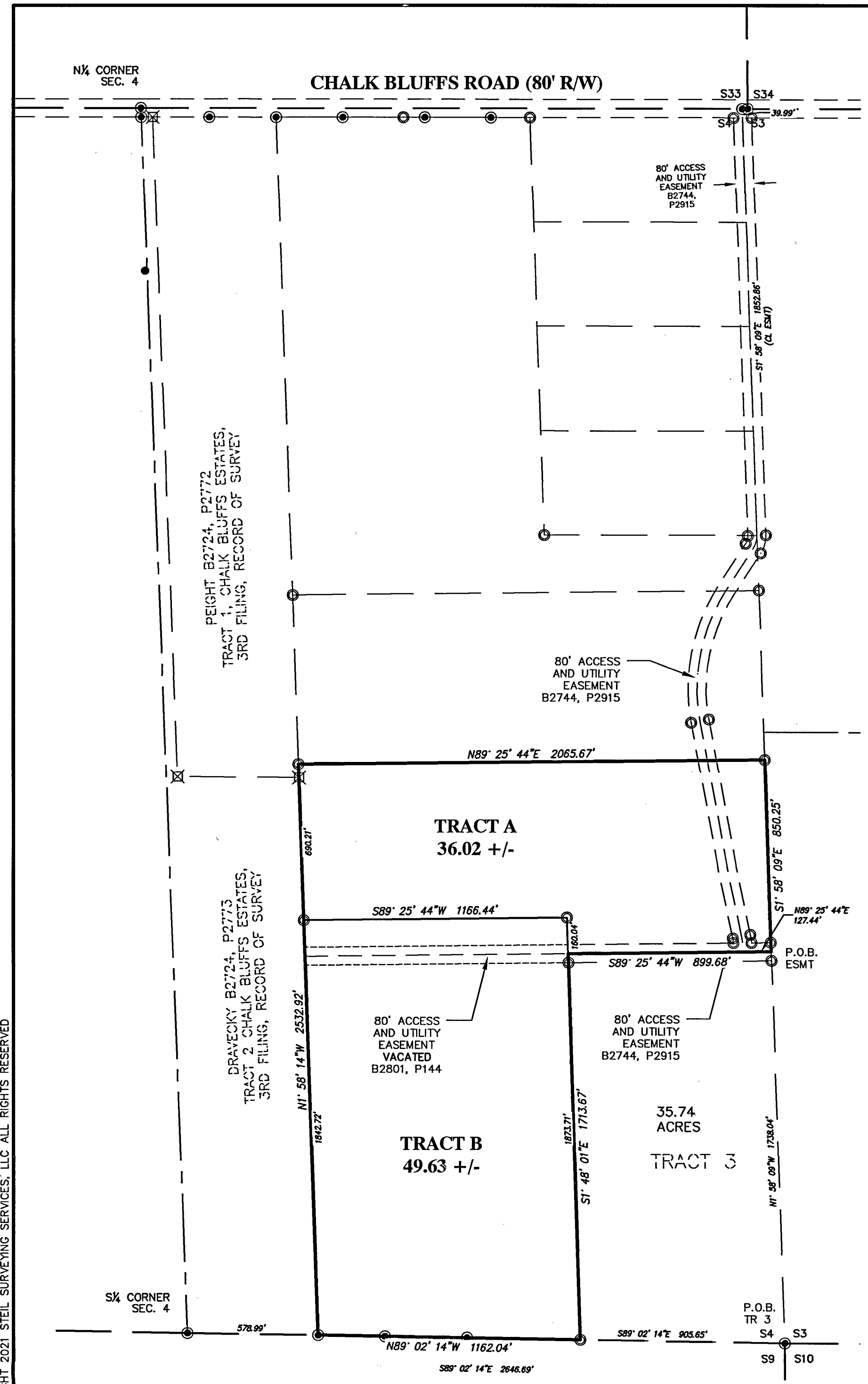


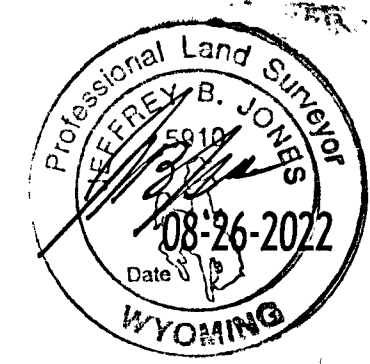
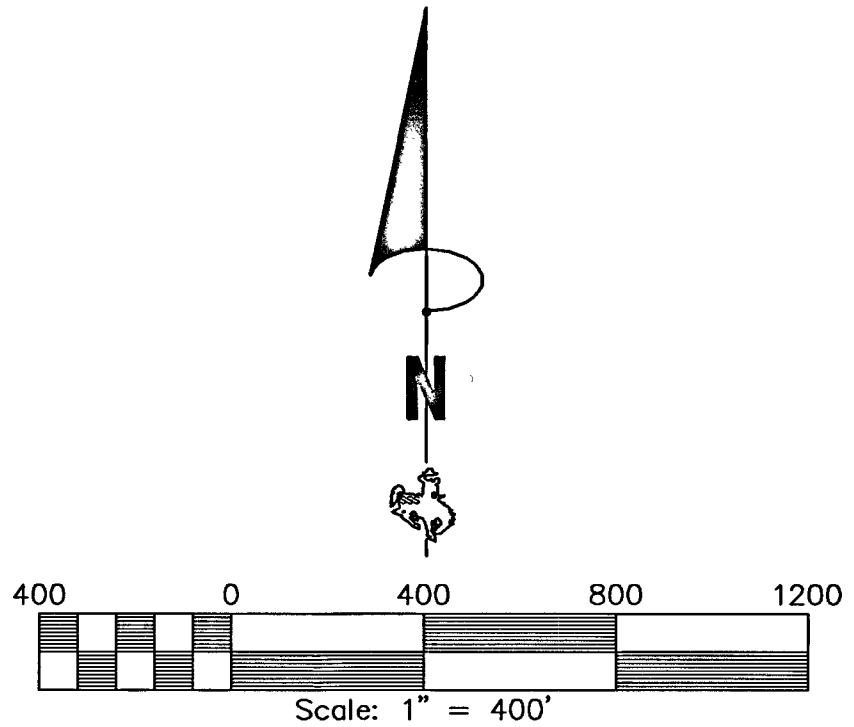
© COPYRIGHT 2021 STEIL SURVEYING SERVICES, LLC ALL RIGHTS RESERVED



BASIS OF BEARINGS:
WYOMING STATE PLANE COORDINATES,
EAST ZONE, NAD83-2011,
US SURVEY FEET, DISTANCES ARE
GRID DISTANCES.

LEGEND

- SET 3/8" X 24" LONG REBAR WITH 1 1/2" ALUMINUM CAP STAMPED "SSS P.L.S. 5910"
- FOUND 2" ALUMINUM CAP STAMPED PLS 10838
- FOUND ALUMINUM CAP STAMPED LS 422
- ⊗ FOUND ALUMINUM CAP STAMPED PLS 5910



SURVEY DRAWER
DRAWER # 8, SURVEY *WLO*

CERTIFICATE OF SURVEYOR

I, Jeffrey B. Jones, A Professional Land Surveyor in the State of Wyoming, for and on behalf of Steil Surveying Services, LLC, hereby state, to the best of my knowledge, information and belief, that this map was prepared from field notes taken during an actual survey made by me or under my direct supervision; and that this map correctly shows the results of said survey and that the monuments found or set are as shown.

LAND DESCRIPTIONS

TRACT A

A tract of land situate in the East half of Section 4, T12N, R65W, 6TH P.M., Laramie County, Wyoming, more particularly described as follows:

Beginning at the Southwest Corner of Tract B of said Chalk Bluff Estates (Sixth Filing) on the South section line of said section 4, from which the South Quarter Corner (SQ) of Section 4 bears N89°02'14"W, a distance of 578.99 feet; thence, N 1° 58' 14" W for a distance of 2532.92 feet to the North West corner of Tract A of said Chalk Bluff Estates (Sixth Filing), the True Point of Beginning; thence, N 89° 25' 44" E for a distance of 2065.67 feet to a point on the East section line of said section 4; thence S 1° 58' 09" E along the East line of said section 4 for a distance of 850.25 feet; thence S 89° 25' 44" W for a distance of 899.68 feet to a point on the East line of Tract B; thence N 1° 48' 01" W along the East line of said Tract B for a distance of 160.04 feet; thence N 89° 25' 44" W along the North line of said Tract B a distance of 1166.44 feet; thence N 1° 58' 14" W for a distance of 690.21 feet to the TRUE POINT OF BEGINNING; Containing 36.02 acres more or less, subject to easements, covenants or restrictions of record.

TRACT B

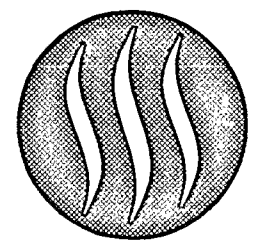
A tract of land situate in the East half of Section 4, T12N, R65W, 6TH P.M., Laramie County, Wyoming, more particularly described as follows:

Beginning at the Southwest Corner of Tract B of said Chalk Bluff Estates (Sixth Filing) on the South section line of said Section 4, from which the South Quarter Corner (SQ) of said Section 4 bears N89°02'14"W, a distance of 578.99 feet; thence, the POINT OF BEGINNING thence, N 1° 58' 14" W for a distance of 1842.72 feet to the North West corner of said Tract B of said Chalk Bluff Estates (Sixth Filing); thence, N 89° 25' 44" E for a distance of 1166.44 feet to a point on the East line of said Tract B; thence S 1° 48' 01" E for a distance of 1873.71 feet to a point on the South section line of said section 4; thence N 89° 02' 14" W along the South line of said section 4 for a distance of 1162.04 feet to the POINT OF BEGINNING; Containing 49.63 acres more or less, subject to easements, covenants or restrictions of record.

**RECORD OF SURVEY
CHALK BLUFFS
ESTATES,
6TH FILING
FOR
JESSE PEIGHTT**

A PORTION OF THE EAST HALF OF SECTION 4,
T12N, R65W, 6TH P.M.,
LARAMIE COUNTY, WYOMING.

PREPARED AUGUST 2022



STEIL SURVEYING SERVICES, LLC
PROFESSIONAL LAND SURVEYORS
PLANNING & DEVELOPMENT SPECIALISTS
1102 WEST 19th ST. CHEYENNE, WY. 82001 ○ (307) 634-7273
756 GILCHRIST ST. WHEATLAND, WY. 82201 ○ (307) 322-9789
www.SteilSurvey.com ○ info@SteilSurvey.com

RECP #: 843856
RECORDED 9/7/2022 AT 11:14 AM BK# 2803 PG# 1039
Debra K. Lee, CLERK OF LARAMIE COUNTY, WY PAGE 1 OF 1

REVISED: 8/26/2022
18317 ROS AUG 2022 35 ACX.DWG